

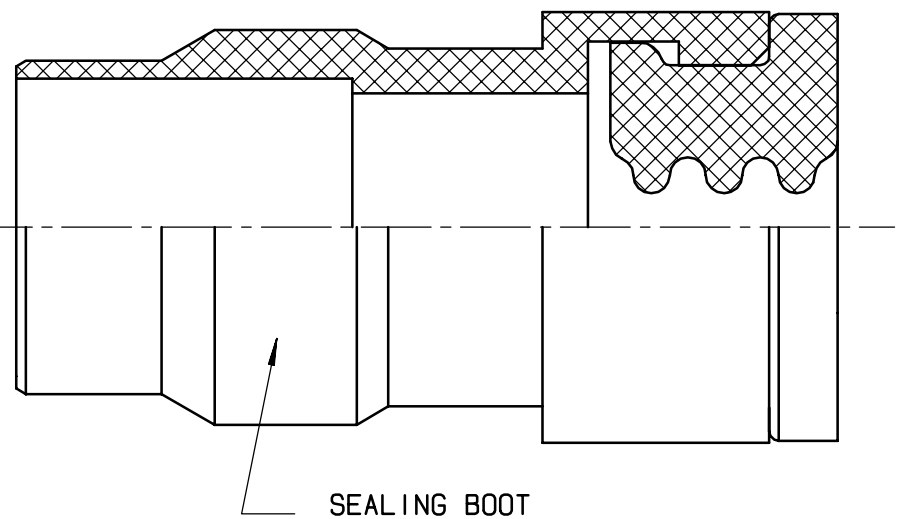
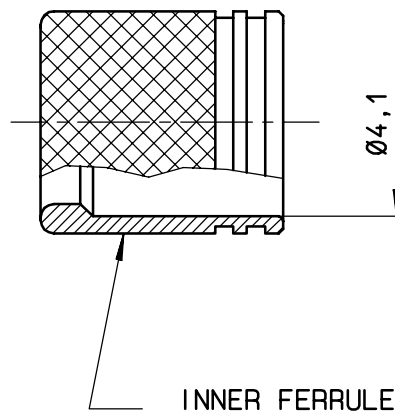
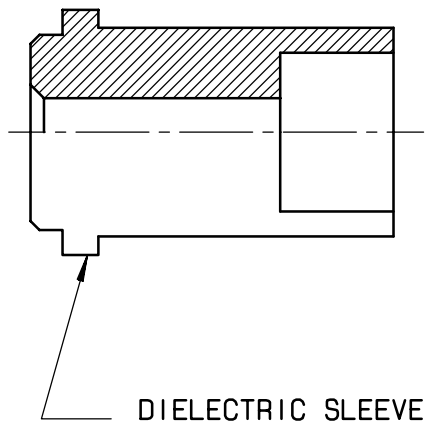
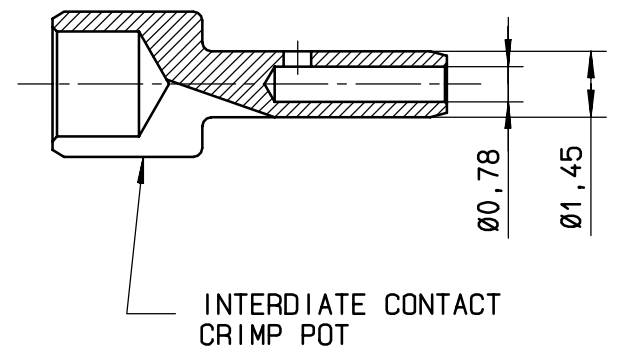
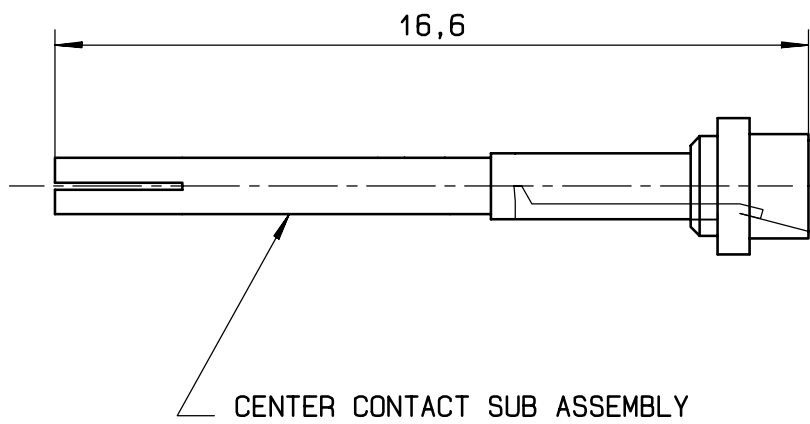
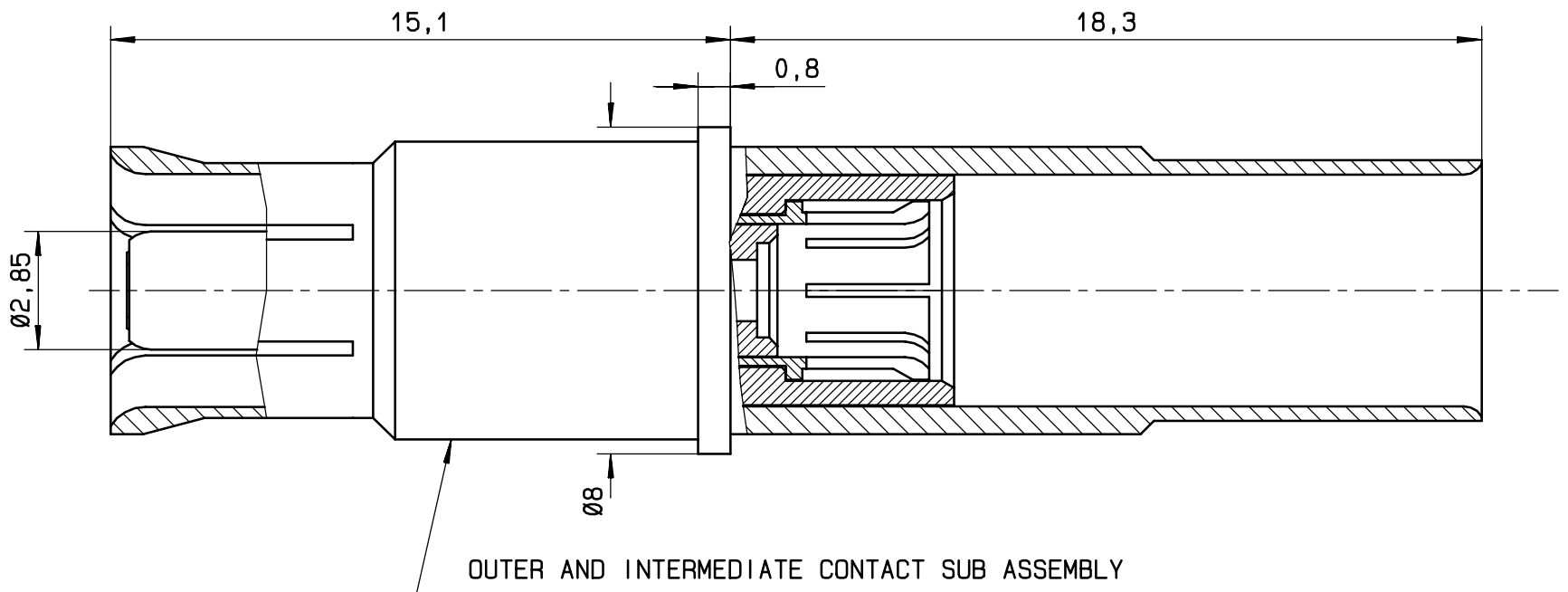


Série
MPX

SIZE 8 CONCENTRIC TWINAX SOCKET CONTACT ENVIRONMENTAL
FOR EN3375-004, EN3375-005 AND RAYCHEM 10613 CABLES

ISSUE
Sept 08, 2004

Page
1 / 1



MATERIALS:

- OUTER AND CENTER CONTACT: BERYLLIUM COPPER ALLOY PER ASTM-B-196 -ANNEALED ON CRIMP BARREL
- INTERMEDIATE CONTACT: BERYLLIUM COPPER ALLOY PER ASTM-B-196 HEAT TREATED
- INTERMEDIATE CONTACT CRIMP POT : LEADED NICKEL COPPER (C97)
- INNER FERRULE: BRASS PER QQ-B-626
- DIELECTRIC PARTS AND DIELECTRIC SLEEVE: PTFE PER ASTM-D-1710 OR EQUIVALENT
- SEALING BOOT : FLUOROSILICONE ELASTOMER PER MIL-R-25988 OR ZZ-R-765

FINISHES (ALL METAL PARTS)

GOLD PLATE PER MIL-G-45204, TYPE I OR II, GRADE C OR D, CLASS 1 50 MICROINCHES OVER NICKEL PLATE PER QQ-N-290, CLASS 2

SEE WIRING INSTRUCTIONS: RP3364

4110-9610 This information is given as an indication. In the continual goal to improve our products, we reserve the right to make any modifications judged necessary

CREATION
PEN: /
NOM: MARIE	08 SEP 04	ADDED RAYCHEM 10613 CABLE	DUPUIS	LAHOREAU
DATE: 8 DEC 88	7 JANU 01	CABLES NFL52161-2/3 BECOME EN3375-004/-005	BALDYROU	.
APPR. : .	ISSUE	REVISIONS	NAME	APPROVED