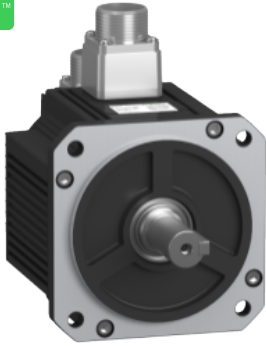


# Product datasheet

Specifications



servo motor BCH16, Lexium 16D,  
130mm, shaft 22mm, 1.5kW, High  
inertia, 2000rpm

BCH16HM15230A6C2

## Main

Range compatibility	Easy Lexium 16
Product or component type	Servo motor
Device short name	BCH16

## Complementary

Maximum mechanical speed	3000 rpm
[Us] rated supply voltage	220 V
Network number of phases	3 phases
Continuous stall current	7.9 A
Continuous stall torque	7.16 N.m for LXM16D at 14.43 A, 220 V, single phase
Continuous power	850 W
Peak stall torque	21.48 N.m for LXM16D at 14.43 A, 220 V, single phase
Nominal output power	850 W for LXM16D at 14.43 A, 220 V, single phase
Nominal torque	5.39 N.m for LXM16D at 14.43 A, 220 V, single phase
Nominal speed	1500 rpm for LXM16D at 14.43 A, 220 V, single phase
Maximum current Irms	24.9 A for LXM16D at 1.5 kW, 220 V
Maximum permanent current	18.1 A
Product compatibility	LXM16D motion servo motors motor at 0.85 kW, 220 V, single phase
Shaft end	Parallel key
Second shaft	Without second shaft end
Shaft diameter	22 mm
Shaft length	35 mm
Key width	8 mm
Feedback type	2500 incremental encoder
Holding brake	Without
Holding torque	15.0 N.m
Mounting support	Asian standard flange
Motor flange size	130 mm
Electrical connection	Connector MIL

<b>Torque constant</b>	0.75 N.m/A at 20 °C
<b>Back emf constant</b>	51.7 V/krpm at 20 °C
<b>Rotor inertia</b>	14.08 kg.cm <sup>2</sup>
<b>Stator resistance</b>	0.65 Ohm at 20 °C
<b>Stator inductance</b>	5.5 mH at 20 °C
<b>Stator electrical time constant</b>	8.46 ms at 20 °C
<b>Maximum radial force Fr</b>	498.82 N at 2000 rpm
<b>Maximum axial force Fa</b>	176.4 N
<b>Type of cooling</b>	Natural convection
<b>Length</b>	154.3 mm
<b>Centring collar diameter</b>	110 mm
<b>Centring collar depth</b>	6 mm
<b>Number of mounting holes</b>	4
<b>Mounting holes diameter</b>	9 mm
<b>Circle diameter of the mounting holes</b>	145 mm
<b>Distance shaft shoulder-flange</b>	50 mm
<b>Width</b>	130 mm
<b>Height</b>	183.4 mm
<b>Depth</b>	154.3 mm
<b>Net weight</b>	6.5 kg

## Environment

<b>IP degree of protection</b>	IP65 IM B5, IM V1 IP65 IM V3
<b>Ambient air temperature for operation</b>	0...40 °C

## Packing Units

<b>Unit Type of Package 1</b>	PCE
<b>Number of Units in Package 1</b>	1
<b>Package 1 Height</b>	27.5 cm
<b>Package 1 Width</b>	18 cm
<b>Package 1 Length</b>	36 cm
<b>Package 1 Weight</b>	7.91 kg

## Offer Sustainability

<b>Sustainable offer status</b>	Green Premium product
<b>REACH Regulation</b>	<a href="#">REACH Declaration</a>
<b>REACH free of SVHC</b>	Yes
<b>EU RoHS Directive</b>	Compliant <a href="#">EU RoHS Declaration</a>
<b>Mercury free</b>	Yes
<b>China RoHS Regulation</b>	<a href="#">China RoHS declaration</a>
<b>RoHS exemption information</b>	Yes

**Recommended replacement(s)**