

RING TERMINAL, PRE-INSULATED WITH PVC, FOR COPPER CONDUCTORS


Features

TECHNICAL INFORMATION

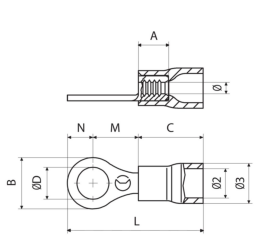
Minimum operating temperature	-20 °C
Maximum operating temperature	80 °C
Threshold of operating temperature for short periods	90 °C
Spy hole	No
Narrow connection	No
Bend angle of the connection	0 °
Number of holes on the palm	1
Barrel reinforcement ring	No
Markings found	marchio di fabbrica
Conditions of use	statico, al chiuso
Type	singolo
Type of insulation	parziale
Easy insertion input	Yes
Self-extinguishing fire class according to UL 94	VO
Reinforced with anti-vibration collar	No

WEIGHT AND DIMENSIONS

Centre distance between holes	0 mm
-------------------------------	------

CLASSIFICATION AND DATA ORDERING

ETIM Class 7	Solderless copper terminals for copper conductors [EC001052]
Manufactured in	Italy


MATERIAL COMPOSITION AND TREATMENTS

Conductor body material	Electrolitic copper with purity above 99,95%
Minimum thickness of the surface coating of the conducting body	3 µm
Surface treatment of the conductor body	tin plating
Insulated cover material	PVC polyvinylchloride
Annealing	Yes
Internal surface of the barrel	knurled
Halogen free	No

LOGISTIC

Type of packaging	; box
Unit in minimal packaging	100 PCE
Minimum order quantity	100 PCE
Customs code	85369010

RF-MInsulated cover colour
RossoRange of cable cross section
0.25 ÷ 1.5 mm²

tipo	Reference standard	Screw diameter	ØD [mm]	B [mm]	N [mm]	M [mm]	I [mm]	L [mm]	Gross weight [g]	A [mm]	C [mm]	Ø2 [mm]	Ø3 [mm]	Ø [mm]	Cable stripping length [mm]	Unit in standard packaging [pce]
RF-M2	UL 486A-486B; UL 486C	M2	2.2	5.6	2.8	4.5	8.7	17.3	0,657	4.2	10.1	4	5.5	1.8	4.6	3,000
RF-M3	UL 486A-486B; UL 486C	M3	3.2	5.6	2.8	4.5	8.7	17.3	0,605	4.2	10.1	4	5.5	1.8	4.6	3,000
RF-M3.5	UL 486A-486B; UL 486C	M3.5	3.7	5.6	2.8	4.5	8.7	17.3	0,593	4.2	10.1	4	5.5	1.8	4.6	3,000
RF-M3.5/1	UL 486A-486B; UL 486C	M3.5	3.7	6.2	3.1	7.1	11.3	20.2	0,698	4.2	10.1	4	5.5	1.8	4.6	3,000
RF-M4	UL 486A-486B; UL 486C	M4	4.3	7	3.5	6.5	10.7	20	0,691	4.2	10.1	4	5.5	1.8	4.6	3,000
RF-M4/3	UL 486A-486B; UL 486C	M4	4.3	7.8	3.9	7.1	11.3	21	0,771	4.2	10.1	4	5.5	1.8	4.6	3,000
RF-M5	UL 486A-486B; UL 486C	M5	5.3	7.8	3.9	7.1	11.3	21	0,717	4.2	10.1	4	5.5	1.8	4.6	2,500
RF-M6	UL 486A-486B; UL 486C	M6	6.4	9.4	4.7	8.1	12.3	22.8	0,815	4.2	10.1	4	5.5	1.8	4.6	2,500
RF-M6/1	UL 486A-486B; UL 486C	M6	6.4	12	6	10.3	14.5	26.3	1,201	4.2	10.1	4	5.5	1.8	4.6	2,000
RF-M7	UL 486A-486B; UL 486C	M7	7.2	9.4	4.7	8.1	12.3	22.8	0,762	4.2	10.1	4	5.5	1.8	4.6	2,500
RF-M8	UL 486A-486B; UL 486C	M8	8.4	12	6	10.3	14.5	26.3	1,041	4.2	10.1	4	5.5	1.8	4.6	2,000
RF-M10	UL 486A-486B; UL 486C	M10	10.5	15.5	7.75	13.05	17.25	30.8	1,401	4.2	10.1	4	5.5	1.8	4.6	1,500
RF-M12	UL 486A-486B; UL 486C	M12	13	18	9	15.5	19.7	34.5	1,603	4.2	10.1	4	5.5	1.8	4.6	1,500

BF-MInsulated cover colour
BlueRange of cable cross section
1.5 ÷ 2.5 mm²

tipo	Reference standard	Screw diameter	ØD [mm]	B [mm]	N [mm]	M [mm]	I [mm]	L [mm]	Gross weight [g]	A [mm]	C [mm]	Ø2 [mm]	Ø3 [mm]	Ø [mm]	Cable stripping length [mm]	Unit in standard packaging [pce]
BF-M2		M2	2.2	5.6	2.8	5	9.2	17.8	0,748	4.2	10.1	4.9	6.4	2.4	4.6	3,000
BF-M3	UL 486A-486B; UL 486C	M3	3.2	5.6	2.8	5	9.2	17.8	0,731	4.2	10.1	4.9	6.4	2.4	4.6	2,500
BF-M3.5	UL 486A-486B; UL 486C	M3.5	3.7	5.6	2.8	5	9.2	17.8	0,708	4.2	10.1	4.9	6.4	2.4	4.6	2,500
BF-M3.5/1	UL 486A-486B; UL 486C	M3.5	3.7	6.2	3.1	6.5	10.7	19.6	0,783	4.2	10.1	4.9	6.4	2.4	4.6	2,500
BF-M4	UL 486A-486B; UL 486C	M4	4.3	8	4	6.5	10.7	20.5	0,868	4.2	10.1	4.9	6.4	2.4	4.6	2,500

tipo	Reference standard	Screw diameter	ØD [mm]	B [mm]	N [mm]	M [mm]	I [mm]	L [mm]	Gross weight [g]	A [mm]	C [mm]	Ø2 [mm]	Ø3 [mm]	Ø [mm]	Cable stripping length [mm]	Unit in standard packaging [pce]
BF-M5	UL 486A-486B; UL 486C	M5	5.3	8	4	7.5	11.7	21.5	0,849	4.2	10.1	4.9	6.4	2.4	4.6	2,000
BF-M6	UL 486A-486B; UL 486C	M6	6.4	9.4	4.7	8.6	12.8	23.3	0,949	4.2	10.1	4.9	6.4	2.4	4.6	2,000
BF-M6/1	UL 486A-486B; UL 486C	M6	6.4	12	6	10.3	14.5	26.3	1,317	4.2	10.1	4.9	6.4	2.4	4.6	2,000
BF-M6/2		M6	6.4	8.4	4.2	5.4	9.6	19.6	0,744	4.2	10.1	4.9	6.4	2.4	4.6	2,500
BF-M7	UL 486A-486B; UL 486C	M7	7.2	10	5	7.8	12	22.8	0,918	4.2	10.1	4.9	6.4	2.4	4.6	2,000
BF-M8	UL 486A-486B; UL 486C	M8	8.4	12	6	10.3	14.5	26.3	1,140	4.2	10.1	4.9	6.4	2.4	4.6	1,500
BF-M10	UL 486A-486B; UL 486C	M10	10.5	15.5	7.75	13.05	17.25	30.8	1,485	4.2	10.1	4.9	6.4	2.4	4.6	1,500
BF-M12	UL 486A-486B; UL 486C	M12	13	18	9	15.5	19.7	34.5	1,712	4.2	10.1	4.9	6.4	2.4	4.6	1,000

GF-M

Insulated cover colour
Yellow

Range of cable cross section
4 ÷ 6 mm²

tipo	Reference standard	Screw diameter	ØD [mm]	B [mm]	N [mm]	M [mm]	I [mm]	L [mm]	Gross weight [g]	A [mm]	C [mm]	Ø2 [mm]	Ø3 [mm]	Ø [mm]	Cable stripping length [mm]	Unit in standard packaging [pce]
GF-M3	UL 486A-486B; UL 486C	M3	3.2	8	4	8.1	14.5	26.2	1,928	6.4	14.1	6.6	8.1	3.6	7	1,000
GF-M3.5	UL 486A-486B; UL 486C	M3.5	3.7	8	4	8.1	14.5	26.2	1,949	6.4	14.1	6.6	8.1	3.6	7	1,000
GF-M4	UL 486A-486B; UL 486C	M4	4.3	9	4.5	8.1	14.5	26.7	1,986	6.4	14.1	6.6	8.1	3.6	7	1,000
GF-M5	UL 486A-486B; UL 486C	M5	5.3	9	4.5	8.1	14.5	26.7	1,924	6.4	14.1	6.6	8.1	3.6	7	1,000
GF-M6	UL 486A-486B; UL 486C	M6	6.4	11	5.5	11.1	17.5	30.7	2,230	6.4	14.1	6.6	8.1	3.6	7	1,000
GF-M6/1	UL 486A-486B; UL 486C	M6	6.4	11	5.5	8.1	14.5	27.7	2,040	6.4	14.1	6.6	8.1	3.6	7	1,000
GF-M7	UL 486A-486B; UL 486C	M7	7.2	11	5.5	11.1	17.5	30.7	2,170	6.4	14.1	6.6	8.1	3.6	7	1,000
GF-M8	UL 486A-486B; UL 486C	M8	8.4	13.6	6.8	12.1	18.5	33	2,479	6.4	14.1	6.6	8.1	3.6	7	800
GF-M8/1	UL 486A-486B; UL 486C	M8	8.4	11	5.5	8.1	14.5	27.8	1,824	6.4	14.1	6.6	8.1	3.6	7	1,000
GF-M10	UL 486A-486B; UL 486C	M10	10.5	13.6	6.8	12.1	18.5	33	2,218	6.4	14.1	6.6	8.1	3.6	7	800
GF-M10/1	UL 486A-486B; UL 486C	M10	10.5	15.5	7.75	13.85	20.25	35.7	2,645	6.4	14.1	6.6	8.1	3.6	7	800

tipo	Reference standard	Screw diameter	ØD [mm]	B [mm]	N [mm]	M [mm]	l [mm]	L [mm]	Gross weight [g]	A [mm]	C [mm]	Ø2 [mm]	Ø3 [mm]	Ø [mm]	Cable stripping length [mm]	Unit in standard packaging [pce]
GF-M12	UL 486A-486B; UL 486C	M12	13	19	9.5	15.1	21.5	38.7	3,196	6.4	14.1	6.6	8.1	3.6	7	500
GF-M14	UL 486A-486B; UL 486C	M14	15	21	10.5	16.1	22.5	40.7	3,400	6.4	14.1	6.6	8.1	3.6	7	500
GF-M16	UL 486A-486B; UL 486C	M16	17	24	12.5	17.1	23.5	43.2	3,780	6.4	14.1	6.6	8.1	3.6	7	500



Via Serenissima, 9 - 25135
Brescia - ITALY