

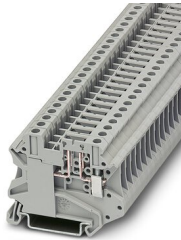
UT 4-TG - Disconnect terminal block



3046142

<https://www.phoenixcontact.com/in/products/3046142>

Please be informed that the data shown in this PDF document is generated from our Online Catalog. Please find the complete data in the user documentation. Our General Terms of Use for Downloads are valid.



Disconnect terminal block, Current and voltage are determined by the plug used., nom. voltage: 500 V, nominal current: 20 A, connection method: Screw connection, Rated cross section: 4 mm², cross section: 0.14 mm² - 6 mm², mounting: NS 35/7,5, NS 35/15, color: gray

Your advantages

- Tested for railway applications

Commercial Data

Item number	3046142
Packing unit	50 pc
Minimum order quantity	50 pc
Sales Key	BE1
Product Key	BE1132
Catalog Page	Page 163 (C-1-2019)
GTIN	4017918975579
Weight per Piece (including packing)	12.62 g
Weight per Piece (excluding packing)	12.04 g
Customs tariff number	85369010
Country of origin	DE

UT 4-TG - Disconnect terminal block



3046142

<https://www.phoenixcontact.com/in/products/3046142>

Technical Data

Notes

General	Current and voltage are determined by the plug used.
---------	--

Product properties

Product type	Disconnect terminal block
Area of application	Railway industry
	Machine building
	Plant engineering
Number of connections	2
Number of rows	1
Potentials	1

Insulation characteristics

Overvoltage category	III
Degree of pollution	3

Electrical properties

Rated surge voltage	6 kV
Maximum power dissipation for nominal condition	1.02 W

Connection data

Number of connections per level	2
Nominal cross section	4 mm ²

Level 1 above 1 below 1

Screw thread	M3
Tightening torque	0.6 ... 0.8 Nm
Stripping length	9 mm
Internal cylindrical gage	A4
Connection in acc. with standard	IEC 60947-7-1
Conductor cross section rigid	0.14 mm ² ... 6 mm ²
Cross section AWG	26 ... 10 (converted acc. to IEC)
Conductor cross section flexible	0.14 mm ² ... 6 mm ²
Conductor cross section, flexible [AWG]	26 ... 10 (converted acc. to IEC)
Conductor cross-section flexible (ferrule without plastic sleeve)	0.14 mm ² ... 4 mm ²
Flexible conductor cross section (ferrule with plastic sleeve)	0.14 mm ² ... 4 mm ²
2 conductors with same cross section, solid	0.14 mm ² ... 1.5 mm ²
2 conductors with same cross section, flexible	0.14 mm ² ... 1.5 mm ²
2 conductors with same cross section, flexible, with ferrule without plastic sleeve	0.14 mm ² ... 1.5 mm ²
2 conductors with the same cross section, flexible, with TWIN ferrule with plastic sleeve	0.5 mm ² ... 2.5 mm ²
Nominal current	20 A (with 4 mm ² conductor cross section)

UT 4-TG - Disconnect terminal block



3046142

<https://www.phoenixcontact.com/in/products/3046142>

Maximum load current	20 A (with 6 mm ² conductor cross section)
	20 A (with 6 mm ² conductor cross section)
Nominal voltage	500 V
Nominal cross section	4 mm ²

Dimensions

Width	6.2 mm
Height	57.8 mm
Height NS 35/15	55 mm
Height NS 35/7,5	47.5 mm
Length	57.8 mm

Material specifications

Color	gray
Flammability rating according to UL 94	V0
Insulating material group	I
Insulating material	PA
Static insulating material application in cold	-60 °C
Temperature index of insulation material (DIN EN 60216-1 (VDE 0304-21))	125 °C
Relative insulation material temperature index (Elec., UL 746 B)	130 °C
Fire protection for rail vehicles (DIN EN 45545-2) R22	HL 1 - HL 3
Fire protection for rail vehicles (DIN EN 45545-2) R23	HL 1 - HL 3
Fire protection for rail vehicles (DIN EN 45545-2) R24	HL 1 - HL 3
Fire protection for rail vehicles (DIN EN 45545-2) R26	HL 1 - HL 3
Calorimetric heat release NFPA 130 (ASTM E 1354)	27,5 MJ/kg
Surface flammability NFPA 130 (ASTM E 162)	passed
Specific optical density of smoke NFPA 130 (ASTM E 662)	passed
Smoke gas toxicity NFPA 130 (SMP 800C)	passed

Electrical tests

Surge voltage test

Test voltage setpoint	7.3 kV
Result	Test passed

Temperature-rise test

Requirement temperature-rise test	Increase in temperature \leq 45 K
Result	Test passed
Short-time withstand current 2.5 mm ²	0.3 kA
Short-time withstand current 4 mm ²	0.48 kA
Result	Test passed

Power-frequency withstand voltage

Test voltage setpoint	1.89 kV
Result	Test passed

UT 4-TG - Disconnect terminal block



3046142

<https://www.phoenixcontact.com/in/products/3046142>

Mechanical properties

Mechanical data

Open side panel	No
-----------------	----

Mechanical tests

Mechanical strength

Result	Test passed
--------	-------------

Attachment on the carrier

DIN rail/fixing support	NS 35
Test force setpoint	1 N
Result	Test passed

Test for conductor damage and slackening

Rotation speed	10 rpm
Revolutions	135
Conductor cross section/weight	0.14 mm ² / 0.2 kg
	4 mm ² / 0.9 kg
	6 mm ² / 1.4 kg
Result	Test passed

Environmental and real-life conditions

Needle-flame test

Time of exposure	30 s
Result	Test passed

Oscillation/broadband noise

Specification	DIN EN 50155 (VDE 0115-200):2008-03
Spectrum	Service life test category 1, class B, body mounted
Frequency	$f_1 = 5 \text{ Hz}$ to $f_2 = 150 \text{ Hz}$
ASD level	1.857 (m/s ²)/Hz
Acceleration	0.8g
Test duration per axis	5 h
Test directions	X-, Y- and Z-axis
Result	Test passed

Shocks

Specification	DIN EN 50155 (VDE 0115-200):2008-03
Pulse shape	Half-sine
Acceleration	5g
Shock duration	30 ms
Number of shocks per direction	3
Test directions	X-, Y- and Z-axis (pos. and neg.)
Result	Test passed

UT 4-TG - Disconnect terminal block



3046142

<https://www.phoenixcontact.com/in/products/3046142>

Ambient conditions

Ambient temperature (operation)	-60 °C ... 105 °C (max. short-term operating temperature RTI Elec.)
Ambient temperature (storage/transport)	-25 °C ... 60 °C (for a short time, not exceeding 24 h, -60 °C to +70 °C)
Ambient temperature (assembly)	-5 °C ... 70 °C
Ambient temperature (actuation)	-5 °C ... 70 °C
Permissible humidity (storage/transport)	30 % ... 70 %

Standards and regulations

Connection in acc. with standard	IEC 60947-7-1
----------------------------------	---------------

Mounting

Mounting type	NS 35/7,5
	NS 35/15

UT 4-TG - Disconnect terminal block

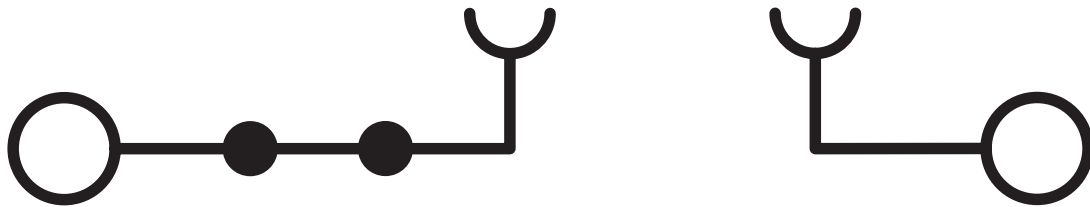


3046142

<https://www.phoenixcontact.com/in/products/3046142>

Drawings

Circuit diagram



UT 4-TG - Disconnect terminal block





3046142


<https://www.phoenixcontact.com/in/products/3046142>

Approvals

To download certificates, visit the product detail page: <https://www.phoenixcontact.com/in/products/3046142>

 CSA Approval ID: 13631				
	Nominal Voltage U_N	Nominal Current I_N	Cross Section AWG	Cross Section mm^2
Use group B	600 V	16 A	26 - 10	-
Use group C	600 V	16 A	26 - 10	-

 EAC Approval ID: RU C-DE.BL08.B.00534				
---	--	--	--	--

 cULus Recognized Approval ID: E60425				
	Nominal Voltage U_N	Nominal Current I_N	Cross Section AWG	Cross Section mm^2
Use group B	600 V	16 A	26 - 10	-
Multi-conductor connection	600 V	16 A	26 - 14	-
Use group C	600 V	16 A	26 - 10	-
Multi-conductor connection	600 V	16 A	26 - 14	-

UT 4-TG - Disconnect terminal block



3046142

<https://www.phoenixcontact.com/in/products/3046142>

Classifications

ECLASS

ECLASS-11.0	27141126
ECLASS-12.0	27141126
ECLASS-13.0	27250108

ETIM

ETIM 8.0	EC000902
----------	----------

UNSPSC

UNSPSC 21.0	39121400
-------------	----------

UT 4-TG - Disconnect terminal block



3046142

<https://www.phoenixcontact.com/in/products/3046142>

Environmental Product Compliance


REACH SVHC	Lead 7439-92-1
China RoHS	Environmentally Friendly Use Period = 50 years
	For information on hazardous substances, refer to the manufacturer's declaration available under "Downloads"

UT 4-TG - Disconnect terminal block

3046142

<https://www.phoenixcontact.com/in/products/3046142>

Accessories

 Note: Applying some accessories below might limit this product.

FBS 2-6 - Plug-in bridge

3030336

<https://www.phoenixcontact.com/in/products/3030336>



Plug-in bridge, pitch: 6.2 mm, number of positions: 2, color: red

 Max. current carrying capacity: 20 A

FBS 3-6 - Plug-in bridge

3030242

<https://www.phoenixcontact.com/in/products/3030242>



Plug-in bridge, pitch: 6.2 mm, number of positions: 3, color: red

 Max. current carrying capacity: 20 A

UT 4-TG - Disconnect terminal block

3046142

<https://www.phoenixcontact.com/in/products/3046142>




FBS 4-6 - Plug-in bridge

3030255

<https://www.phoenixcontact.com/in/products/3030255>



Plug-in bridge, pitch: 6.2 mm, number of positions: 4, color: red

 Max. current carrying capacity: 20 A


FBS 5-6 - Plug-in bridge

3030349

<https://www.phoenixcontact.com/in/products/3030349>



Plug-in bridge, pitch: 6.2 mm, number of positions: 5, color: red

 Max. current carrying capacity: 20 A

UT 4-TG - Disconnect terminal block

3046142

<https://www.phoenixcontact.com/in/products/3046142>




FBS 6-6 - Plug-in bridge

1008238

<https://www.phoenixcontact.com/in/products/1008238>



Plug-in bridge, One side not fully isolated, pitch: 6.2 mm, number of positions: 6, color: red

 Max. current carrying capacity: 20 A


FBS 10-6 - Plug-in bridge

3030271

<https://www.phoenixcontact.com/in/products/3030271>



Plug-in bridge, pitch: 6.2 mm, number of positions: 10, color: red

 Max. current carrying capacity: 20 A

UT 4-TG - Disconnect terminal block

3046142

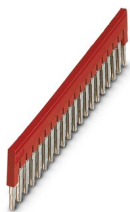
<https://www.phoenixcontact.com/in/products/3046142>




FBS 20-6 - Plug-in bridge

3030365

<https://www.phoenixcontact.com/in/products/3030365>



Plug-in bridge, pitch: 6.2 mm, number of positions: 20, color: red

 Max. current carrying capacity: 20 A


FBS 50-6 - Plug-in bridge

3032224

<https://www.phoenixcontact.com/in/products/3032224>



Plug-in bridge, pitch: 6.2 mm, number of positions: 50, color: red

 Max. current carrying capacity: 20 A

UT 4-TG - Disconnect terminal block

3046142

<https://www.phoenixcontact.com/in/products/3046142>




FBSR 2-6 - Plug-in bridge

3033715

<https://www.phoenixcontact.com/in/products/3033715>



Plug-in bridge, pitch: 6.2 mm, number of positions: 2, color: red

 Max. current carrying capacity: 20 A


FBSR 3-6 - Plug-in bridge

3001594

<https://www.phoenixcontact.com/in/products/3001594>



Plug-in bridge, pitch: 6.2 mm, number of positions: 3, color: red

 Max. current carrying capacity: 20 A

UT 4-TG - Disconnect terminal block

3046142

<https://www.phoenixcontact.com/in/products/3046142>




FBSR 4-6 - Plug-in bridge

3001595

<https://www.phoenixcontact.com/in/products/3001595>



Plug-in bridge, pitch: 6.2 mm, number of positions: 4, color: red

 Max. current carrying capacity: 20 A

FBSR 5-6 - Plug-in bridge

3001596

<https://www.phoenixcontact.com/in/products/3001596>



Plug-in bridge, pitch: 6.2 mm, number of positions: 5, color: red

 Max. current carrying capacity: 20 A

UT 4-TG - Disconnect terminal block

3046142

<https://www.phoenixcontact.com/in/products/3046142>



FBSR 10-6 - Plug-in bridge

3033716

<https://www.phoenixcontact.com/in/products/3033716>



Plug-in bridge, pitch: 6.2 mm, number of positions: 10, color: red

 Max. current carrying capacity: 20 A


FBSRH 2-6 - Short-circuit connector

3033812

<https://www.phoenixcontact.com/in/products/3033812>



Short-circuit connector, pitch: 6.2 mm, number of positions: 2, color: red

 Max. current carrying capacity: 20 A

UT 4-TG - Disconnect terminal block

3046142

<https://www.phoenixcontact.com/in/products/3046142>



FBS 2-6 BU - Plug-in bridge

3036932

<https://www.phoenixcontact.com/in/products/3036932>



Plug-in bridge, pitch: 6.2 mm, number of positions: 2, color: blue

 Max. current carrying capacity: 20 A

FBS 3-6 BU - Plug-in bridge

3036945

<https://www.phoenixcontact.com/in/products/3036945>



Plug-in bridge, pitch: 6.2 mm, number of positions: 3, color: blue

 Max. current carrying capacity: 20 A

UT 4-TG - Disconnect terminal block

3046142

<https://www.phoenixcontact.com/in/products/3046142>



FBS 4-6 BU - Plug-in bridge

3036958

<https://www.phoenixcontact.com/in/products/3036958>



Plug-in bridge, pitch: 6.2 mm, number of positions: 4, color: blue

 Max. current carrying capacity: 20 A

FBS 5-6 BU - Plug-in bridge

3036961

<https://www.phoenixcontact.com/in/products/3036961>



Plug-in bridge, pitch: 6.2 mm, number of positions: 5, color: blue

 Max. current carrying capacity: 20 A

UT 4-TG - Disconnect terminal block

3046142

<https://www.phoenixcontact.com/in/products/3046142>



FBS 10-6 BU - Plug-in bridge

3032198

<https://www.phoenixcontact.com/in/products/3032198>

Plug-in bridge, pitch: 6.2 mm, number of positions: 10, color: blue



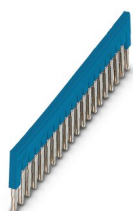
 Max. current carrying capacity: 20 A


FBS 20-6 BU - Plug-in bridge

3032208

<https://www.phoenixcontact.com/in/products/3032208>

Plug-in bridge, pitch: 6.2 mm, number of positions: 20, color: blue



 Max. current carrying capacity: 20 A

UT 4-TG - Disconnect terminal block

3046142

<https://www.phoenixcontact.com/in/products/3046142>



FBS 50-6 BU - Plug-in bridge

3032211

<https://www.phoenixcontact.com/in/products/3032211>



Plug-in bridge, pitch: 6.2 mm, number of positions: 50, color: blue

 Max. current carrying capacity: 20 A


RB ST 10-(2,5/4) - Reducing bridge

3030873

<https://www.phoenixcontact.com/in/products/3030873>



Reducing bridge, pitch: 10 mm, number of positions: 2, length: 36 mm, color: red

 Max. current carrying capacity: 35 A

UT 4-TG - Disconnect terminal block

3046142

<https://www.phoenixcontact.com/in/products/3046142>




RB UT 10-(2,5/4) - Reducing bridge

3047060

<https://www.phoenixcontact.com/in/products/3047060>



Reducing bridge, pitch: 10.2 mm, number of positions: 2, length: 29 mm, color: red

 Max. current carrying capacity: 40 A


RB UT 35-(2,5/4) - Reducing bridge

3047277

<https://www.phoenixcontact.com/in/products/3047277>



Reducing bridge, pitch: 11 mm, number of positions: 2, color: red

 Max. current carrying capacity: 40 A

UT 4-TG - Disconnect terminal block

3046142

<https://www.phoenixcontact.com/in/products/3046142>



RB UT 16-(2,5/4) - Reducing bridge

3047073

<https://www.phoenixcontact.com/in/products/3047073>



Reducing bridge, pitch: 11 mm, number of positions: 2, length: 31 mm, color: red

 Max. current carrying capacity: 40 A


RB UT 6-(2,5/4) - Reducing bridge

3047251

<https://www.phoenixcontact.com/in/products/3047251>



Reducing bridge, pitch: 9.5 mm, number of positions: 2, length: 25 mm, color: red

 Max. current carrying capacity: 40 A

UT 4-TG - Disconnect terminal block

3046142

<https://www.phoenixcontact.com/in/products/3046142>



SZS 0,6X3,5 - Screwdriver

1205053

<https://www.phoenixcontact.com/in/products/1205053>



Actuation tool, for ST terminal blocks, insulated, also suitable for use as a bladed screwdriver, size: 0.6 x 3.5 x 100 mm, 2-component grip, with non-slip grip

P-CO XL-UT - Component connector

3036799

<https://www.phoenixcontact.com/in/products/3036799>



Component connector, for installing components that can be individually selected up to a diameter of 10 mm and power dissipation of up to 1 W, nominal current: 10 A, length: 41.2 mm, width: 12.3 mm, height: 37.5 mm, number of positions: 1, color: gray

UT 4-TG - Disconnect terminal block

3046142

<https://www.phoenixcontact.com/in/products/3046142>

P-DI - Isolating plugs

3036783

<https://www.phoenixcontact.com/in/products/3036783>



Isolating plugs, length: 10.8 mm, width: 3.5 mm, height: 23.1 mm, color: orange

P-DI GY - Isolating plugs

3047390

<https://www.phoenixcontact.com/in/products/3047390>



Isolating plugs, length: 10.8 mm, width: 3.5 mm, height: 23.1 mm, color: gray

UT 4-TG - Disconnect terminal block

3046142

<https://www.phoenixcontact.com/in/products/3046142>



P-DI GN - Isolating plugs

1071062

<https://www.phoenixcontact.com/in/products/1071062>



Isolating plugs, length: 10.8 mm, width: 3.5 mm, height: 23.1 mm, color: green

SF-SL 0,6X3,5-100 S-VDE - Screwdriver

1212587

<https://www.phoenixcontact.com/in/products/1212587>



Actuation tool, for ST terminal blocks, VDE insulated, with slimmer insulation integrated in the blade, also suitable for use as a bladed screwdriver, size: 0.6 x 3.5 x 100 mm, 2-component grip, with non-slip grip

UT 4-TG - Disconnect terminal block

3046142

<https://www.phoenixcontact.com/in/products/3046142>



NS 35/ 7,5 PERF 2000MM - DIN rail perforated

0801733

<https://www.phoenixcontact.com/in/products/0801733>



DIN rail perforated, acc. to EN 60715, material: Steel, galvanized, passivated with a thick layer, Standard profile, color: silver, Pack of 25 (50 m)

NS 35/ 7,5 UNPERF 2000MM - DIN rail, unperforated

0801681

<https://www.phoenixcontact.com/in/products/0801681>



DIN rail, unperforated, acc. to EN 60715, material: Steel, galvanized, passivated with a thick layer, Standard profile, color: silver, Pack of 25 (50 m)

UT 4-TG - Disconnect terminal block

3046142

<https://www.phoenixcontact.com/in/products/3046142>



NS 35/ 7,5 WH PERF 2000MM - DIN rail perforated

1204119

<https://www.phoenixcontact.com/in/products/1204119>



DIN rail perforated, acc. to EN 60715, material: Steel, Galvanized, white passivated, Standard profile, color: silver, Pack of 25 (50 m)

NS 35/ 7,5 WH UNPERF 2000MM-VPE 10 - DIN rail, unperforated

1204122

<https://www.phoenixcontact.com/in/products/1204122>



DIN rail, unperforated, acc. to EN 60715, material: Steel, Galvanized, white passivated, Standard profile, color: silver, Pack of 10 (20 m)

UT 4-TG - Disconnect terminal block

3046142

<https://www.phoenixcontact.com/in/products/3046142>



NS 35/ 7,5 AL UNPERF 2000MM - DIN rail, unperforated

0801704

<https://www.phoenixcontact.com/in/products/0801704>



DIN rail, unperforated, acc. to EN 60715, material: Aluminum, uncoated, Standard profile, color: silver, Pack of 25 (50 m)

NS 35/ 7,5 ZN PERF 2000MM - DIN rail perforated

1206421

<https://www.phoenixcontact.com/in/products/1206421>



DIN rail perforated, acc. to EN 60715, material: Steel, galvanized, Standard profile, color: silver, Pack of 25 (50 m)

UT 4-TG - Disconnect terminal block

3046142

<https://www.phoenixcontact.com/in/products/3046142>



NS 35/ 7,5 ZN UNPERF 2000MM - DIN rail, unperforated

1206434

<https://www.phoenixcontact.com/in/products/1206434>



DIN rail, unperforated, acc. to EN 60715, material: Steel, galvanized, Standard profile, color: silver, Pack of 25 (50 m)

NS 35/ 7,5 CU UNPERF 2000MM-VPE 10 - DIN rail, unperforated

0801762

<https://www.phoenixcontact.com/in/products/0801762>



DIN rail, unperforated, acc. to EN 60715, material: Copper, uncoated, Standard profile, color: copper-colored, Pack of 10 (20 m)

UT 4-TG - Disconnect terminal block

3046142

<https://www.phoenixcontact.com/in/products/3046142>



NS 35/ 7,5 CAP - End cap

1206560

<https://www.phoenixcontact.com/in/products/1206560>

DIN rail end piece, for DIN rail NS 35/7.5



NS 35/15 PERF 2000MM - DIN rail perforated

1201730

<https://www.phoenixcontact.com/in/products/1201730>



DIN rail perforated, similar to EN 60715, material: Steel, galvanized, passivated with a thick layer, Standard profile, color: silver, Pack of 25 (50 m)

UT 4-TG - Disconnect terminal block

3046142

<https://www.phoenixcontact.com/in/products/3046142>



NS 35/15 UNPERF 2000MM - DIN rail, unperforated

1201714

<https://www.phoenixcontact.com/in/products/1201714>



DIN rail, unperforated, similar to EN 60715, material: Steel, galvanized, passivated with a thick layer, Standard profile, color: silver, Pack of 25 (50 m)

NS 35/15 WH PERF 2000MM - DIN rail perforated

0806602

<https://www.phoenixcontact.com/in/products/0806602>



DIN rail perforated, similar to EN 60715, material: Steel, Galvanized, white passivated, Standard profile, color: white, Pack of 25 (50 m)

UT 4-TG - Disconnect terminal block

3046142

<https://www.phoenixcontact.com/in/products/3046142>



NS 35/15 WH UNPERF 2000MM-VPE 10 - DIN rail, unperforated

1204135

<https://www.phoenixcontact.com/in/products/1204135>



DIN rail, unperforated, similar to EN 60715, material: Steel, Galvanized, white passivated, Standard profile, color: silver, Pack of 10 (20 m)

NS 35/15 AL UNPERF 2000MM - DIN rail, unperforated

1201756

<https://www.phoenixcontact.com/in/products/1201756>



DIN rail, unperforated, similar to EN 60715, material: Aluminum, uncoated, Standard profile, color: silver

UT 4-TG - Disconnect terminal block

3046142

<https://www.phoenixcontact.com/in/products/3046142>



NS 35/15 ZN PERF 2000MM - DIN rail perforated

1206599

<https://www.phoenixcontact.com/in/products/1206599>



DIN rail perforated, similar to EN 60715, material: Steel, galvanized, Standard profile, color: silver, Pack of 25 (50 m)

NS 35/15 ZN UNPERF 2000MM - DIN rail, unperforated

1206586

<https://www.phoenixcontact.com/in/products/1206586>



DIN rail, unperforated, similar to EN 60715, material: Steel, galvanized, Standard profile, color: silver, Pack of 25 (50 m)

UT 4-TG - Disconnect terminal block

3046142

<https://www.phoenixcontact.com/in/products/3046142>



NS 35/15 CU UNPERF 2000MM-VPE 10 - DIN rail, unperforated

1201895

<https://www.phoenixcontact.com/in/products/1201895>



DIN rail, unperforated, similar to EN 60715, material: Copper, uncoated, Standard profile, color: copper-colored, Pack of 10 (20 m)

NS 35/15 CAP - End cap

1206573

<https://www.phoenixcontact.com/in/products/1206573>

DIN rail end piece, for DIN rail NS 35/15



UT 4-TG - Disconnect terminal block

3046142

<https://www.phoenixcontact.com/in/products/3046142>



NS 35/15-2,3 UNPERF 2000MM-VPE 10 - DIN rail, unperforated

1201798

<https://www.phoenixcontact.com/in/products/1201798>



DIN rail, unperforated, acc. to EN 60715, material: Steel, galvanized, passivated with a thick layer, Standard profile 2.3 mm, color: silver, Pack of 10 (20 m)

PAI-4-FIX-5/6 BU - Test adapter

3035975

<https://www.phoenixcontact.com/in/products/3035975>



4 mm test adapter, for terminal blocks with 5.2 mm and 6.2 mm pitch

UT 4-TG - Disconnect terminal block

3046142

<https://www.phoenixcontact.com/in/products/3046142>

PAI-4-FIX-5/6 OG - Test adapter

3035974

<https://www.phoenixcontact.com/in/products/3035974>



4 mm test adapter, for terminal blocks with 5.2 mm and 6.2 mm pitch

PAI-4-FIX-5/6 YE - Test adapter

3035977

<https://www.phoenixcontact.com/in/products/3035977>



4 mm test adapter, for terminal blocks with 5.2 mm and 6.2 mm pitch

UT 4-TG - Disconnect terminal block

3046142

<https://www.phoenixcontact.com/in/products/3046142>



PAI-4-FIX-5/6 RD - Test adapter

3035976

<https://www.phoenixcontact.com/in/products/3035976>



4 mm test adapter, for terminal blocks with 5.2 mm and 6.2 mm pitch

PAI-4-FIX-5/6 GN - Test adapter

3035978

<https://www.phoenixcontact.com/in/products/3035978>



4 mm test adapter, for terminal blocks with 5.2 mm and 6.2 mm pitch

UT 4-TG - Disconnect terminal block

3046142

<https://www.phoenixcontact.com/in/products/3046142>

PAI-4-FIX-5/6 BK - Test adapter

3035980

<https://www.phoenixcontact.com/in/products/3035980>



4 mm test adapter, for terminal blocks with 5.2 mm and 6.2 mm pitch

PAI-4-FIX-5/6 GY - Test adapter

3035982

<https://www.phoenixcontact.com/in/products/3035982>



4 mm test adapter, for terminal blocks with 5.2 mm and 6.2 mm pitch

UT 4-TG - Disconnect terminal block

3046142

<https://www.phoenixcontact.com/in/products/3046142>



PAI-4-FIX-5/6 VT - Test adapter

3035979

<https://www.phoenixcontact.com/in/products/3035979>



4 mm test adapter, for terminal blocks with 5.2 mm and 6.2 mm pitch

PAI-4-FIX-5/6 BN - Test adapter

3035981

<https://www.phoenixcontact.com/in/products/3035981>



4 mm test adapter, for terminal blocks with 5.2 mm and 6.2 mm pitch

UT 4-TG - Disconnect terminal block

3046142

<https://www.phoenixcontact.com/in/products/3046142>



PAI-4-FIX-5/6 WH - Test adapter

3035983

<https://www.phoenixcontact.com/in/products/3035983>



4 mm test adapter, for terminal blocks with 5.2 mm and 6.2 mm pitch

PS-6 - Test plugs

3030996

<https://www.phoenixcontact.com/in/products/3030996>



Test plugs, Modular test plug, number of positions: 1, color: red

UT 4-TG - Disconnect terminal block

3046142

<https://www.phoenixcontact.com/in/products/3046142>



PS-6/2,3MM RD - Test plugs

3038736

<https://www.phoenixcontact.com/in/products/3038736>

Test plugs, number of positions: 1, color: red



P-FIX - Feed-through connector

3038956

<https://www.phoenixcontact.com/in/products/3038956>

Feed-through connector, length: 10.5 mm, width: 4 mm, color: gray



UT 4-TG - Disconnect terminal block

3046142

<https://www.phoenixcontact.com/in/products/3046142>

P-CO - Component connector

3036796

<https://www.phoenixcontact.com/in/products/3036796>



Component connector, for installing components that can be individually selected, nominal current: 6 A, pitch: 5.2 mm, length: 24.2 mm, width: 5.1 mm, height: 33.2 mm, number of positions: 1, color: gray

P-CO 1N4007/R-L - Component connector

3032457

<https://www.phoenixcontact.com/in/products/3032457>



Component connector, with diode 1N4007, length: 24.2 mm, width: 5.2 mm, height: 33.3 mm, number of positions: 1, color: gray

UT 4-TG - Disconnect terminal block

3046142

<https://www.phoenixcontact.com/in/products/3046142>



P-CO 1N4007/L-R - Component connector

3032460

<https://www.phoenixcontact.com/in/products/3032460>



Component connector, with diode 1N4007, length: 24.2 mm, width: 5.2 mm, height: 33.3 mm, number of positions: 1, color: gray

P-CO XL - Component connector

3036797

<https://www.phoenixcontact.com/in/products/3036797>



Component connector, for installing components that can be individually selected up to a diameter of 10 mm and power dissipation of up to 1 W, nominal current: 10 A, length: 41.2 mm, width: 12.3 mm, height: 37.5 mm, number of positions: 1, color: gray

UT 4-TG - Disconnect terminal block

3046142

<https://www.phoenixcontact.com/in/products/3046142>



P-CO XL SKN - Component connector

3036798

<https://www.phoenixcontact.com/in/products/3036798>



Component connector, specifically for holding the SKN 2,5 diode, nominal current: 10 A, length: 41.2 mm, width: 12.3 mm, height: 37.5 mm, number of positions: 1, color: gray

PROJECT COMPLETE - Software

1050453

<https://www.phoenixcontact.com/in/products/1050453>



Intuitive planning and marking software for configuring terminal strips and for professional marking of marking materials for terminal blocks, conductors, cables, devices, and systems. The software is available for download

UT 4-TG - Disconnect terminal block

3046142

<https://www.phoenixcontact.com/in/products/3046142>

P-FU 5X20 - Fuse plug

3036806

<https://www.phoenixcontact.com/in/products/3036806>



Fuse plug, Prior to replacing the cartridge fuse, disconnect the fuse connector from the basic terminal block., nom. voltage: 500 V, nominal current: 6.3 A, connection method: Plug-in connection, fuse type: G / 5 x 20, mounting type: Plug-in mounting, color: black

P-FU 5X20 LED 24-EX - Fuse plug

3036821

<https://www.phoenixcontact.com/in/products/3036821>



Fuse plug, Prior to replacing the cartridge fuse, disconnect the fuse connector from the basic terminal block., nom. voltage: 24 V, nominal current: 6.3 A, fuse type: G / 5 x 20, color: black

UT 4-TG - Disconnect terminal block

3046142

<https://www.phoenixcontact.com/in/products/3046142>

P-FU 5X20 LED 24 - Fuse plug

3036819

<https://www.phoenixcontact.com/in/products/3036819>



Fuse plug, Prior to replacing the cartridge fuse, disconnect the fuse connector from the basic terminal block., nom. voltage: 24 V, nominal current: 6.3 A, fuse type: G / 5 x 20, mounting type: Plug-in mounting, color: black

P-FU 5X20 LED 60 - Fuse plug

3036822

<https://www.phoenixcontact.com/in/products/3036822>



Fuse plug, Prior to replacing the cartridge fuse, disconnect the fuse connector from the basic terminal block., nom. voltage: 500 V, nominal current: 6.3 A, fuse type: G / 5 x 20, mounting type: Plug-in mounting, color: black

UT 4-TG - Disconnect terminal block

3046142

<https://www.phoenixcontact.com/in/products/3046142>

P-FU 5X20 LA 250 - Fuse plug

3036835

<https://www.phoenixcontact.com/in/products/3036835>



Fuse plug, Prior to replacing the cartridge fuse, disconnect the fuse connector from the basic terminal block., nom. voltage: 500 V, nominal current: 6.3 A, fuse type: G / 5 x 20, mounting type: Plug-in mounting, color: black

P-FU 5X20 LED 24 120KOHM - Fuse plug

3036820

<https://www.phoenixcontact.com/in/products/3036820>



Fuse plug, Prior to replacing the cartridge fuse, disconnect the fuse connector from the basic terminal block., nom. voltage: 24 V, nominal current: 6.3 A, fuse type: G / 5 x 20, color: black

UT 4-TG - Disconnect terminal block

3046142

<https://www.phoenixcontact.com/in/products/3046142>

P-FU 5X20 LED 24 820KOHM - Fuse plug

3036825

<https://www.phoenixcontact.com/in/products/3036825>



Fuse plug, Prior to replacing the cartridge fuse, disconnect the fuse connector from the basic terminal block., nom. voltage: 24 V, nominal current: 6.3 A, fuse type: G / 5 x 20, color: black

P-FU 5X20 LED 24-5 - Fuse plug

3209248

<https://www.phoenixcontact.com/in/products/3209248>



Fuse plug, Suitable for terminal blocks with a width of 5.2 mm and above with TG zone, nom. voltage: 24 V, nominal current: 6.3 A, connection method: Plug-in connection, fuse type: G / 5 x 20, mounting type: Plug-in mounting, color: black

UT 4-TG - Disconnect terminal block

3046142

<https://www.phoenixcontact.com/in/products/3046142>

P-FU 5X20 LED 24-5 120KOHM - Fuse plug

3209240

<https://www.phoenixcontact.com/in/products/3209240>



Fuse plug, Suitable for terminal blocks with a width of 5.2 mm and above with TG zone, nom. voltage: 24 V, nominal current: 6.3 A, fuse type: G / 5 x 20, color: black

P-FU 5X20 LED 250-5 - Fuse plug

3209264

<https://www.phoenixcontact.com/in/products/3209264>



Fuse plug, Suitable for terminal blocks with a width of 5.2 mm and above with TG zone, nom. voltage: 250 V, nominal current: 6.3 A, connection method: Plug-in connection, fuse type: G / 5 x 20, mounting type: Plug-in mounting, color: black

UT 4-TG - Disconnect terminal block

3046142

<https://www.phoenixcontact.com/in/products/3046142>

P-FU 5X20 LED 60-5 - Fuse plug

3209251

<https://www.phoenixcontact.com/in/products/3209251>



Fuse plug, Suitable for terminal blocks with a width of 5.2 mm and above with TG zone, nom. voltage: 250 V, nominal current: 6.3 A, connection method: Plug-in connection, fuse type: G / 5 x 20, mounting type: Plug-in mounting, color: black

P-FU 5X20-5 - Fuse plug

3209235

<https://www.phoenixcontact.com/in/products/3209235>



Fuse plug, Suitable for terminal blocks with a width of 5.2 mm and above with TG zone, nom. voltage: 400 V, nominal current: 6.3 A, connection method: Plug-in connection, fuse type: G / 5 x 20, mounting type: Plug-in mounting, color: black

UT 4-TG - Disconnect terminal block

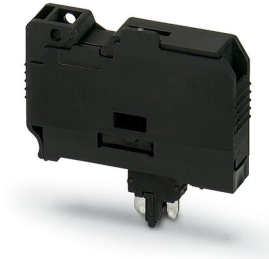
3046142

<https://www.phoenixcontact.com/in/products/3046142>

P-FU 6,3X32 - Fuse plug

3046498

<https://www.phoenixcontact.com/in/products/3046498>

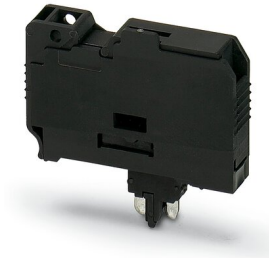


Fuse plug, Prior to replacing the cartridge fuse, disconnect the fuse connector from the basic terminal block., nom. voltage: 630 V, nominal current: 10 A, connection method: Plug-in connection, fuse type: G / 6,3 x 32, mounting type: Plug-in mounting, color: black

P-FU 6,3X32 LED 24 - Fuse plug

3046508

<https://www.phoenixcontact.com/in/products/3046508>



Fuse plug, Prior to replacing the cartridge fuse, disconnect the fuse connector from the basic terminal block., nominal current: 10 A, connection method: Plug-in connection, fuse type: G / 6,3 x 32, mounting type: Plug-in mounting, color: black

UT 4-TG - Disconnect terminal block

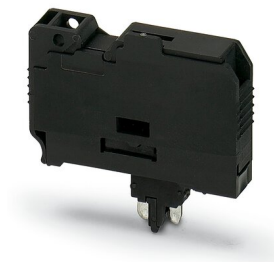
3046142

<https://www.phoenixcontact.com/in/products/3046142>

P-FU 6,3X32 LED 60 - Fuse plug

3046511

<https://www.phoenixcontact.com/in/products/3046511>

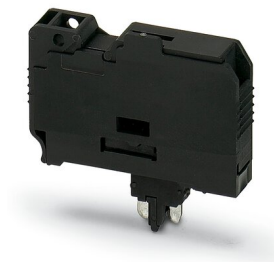


Fuse plug, Prior to replacing the cartridge fuse, disconnect the fuse connector from the basic terminal block., nominal current: 10 A, connection method: Plug-in connection, fuse type: G / 6,3 x 32, mounting type: Plug-in mounting, color: black

P-FU 6,3X32 LA 250 - Fuse plug

3046524

<https://www.phoenixcontact.com/in/products/3046524>



Fuse plug, Prior to replacing the cartridge fuse, disconnect the fuse connector from the basic terminal block., nominal current: 10 A, connection method: Plug-in connection, fuse type: G / 6,3 x 32, mounting type: Plug-in mounting, color: black

UT 4-TG - Disconnect terminal block

3046142

<https://www.phoenixcontact.com/in/products/3046142>



CLIPFIX 35 - End clamp

3022218

<https://www.phoenixcontact.com/in/products/3022218>



Quick mounting end clamp for NS 35/7,5 DIN rail or NS 35/15 DIN rail, with marking option, width: 9.5 mm, color: gray

CLIPFIX 35-5 - End clamp

3022276

<https://www.phoenixcontact.com/in/products/3022276>



Quick mounting end clamp for NS 35/7,5 DIN rail or NS 35/15 DIN rail, with marking option, with parking option for FBS...5, FBS...6, KSS 5, KSS 6, width: 5.15 mm, color: gray

UT 4-TG - Disconnect terminal block

3046142

<https://www.phoenixcontact.com/in/products/3046142>

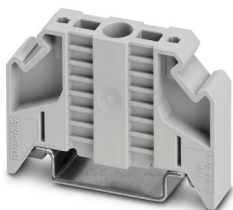


E/NS 35 N - End clamp

0800886

<https://www.phoenixcontact.com/in/products/0800886>

End clamp, width: 9.5 mm, color: gray



ZB 6:UNBEDRUCKT - Zack marker strip

1051003

<https://www.phoenixcontact.com/in/products/1051003>

Zack marker strip, Strip, white, unlabeled, can be labeled with: PLOTMARK, CMS-P1-PLOTTER, mounting type: snapped, for terminal block width: 6.2 mm, lettering field size: 6.15 x 10.5 mm, Number of individual labels: 10



UT 4-TG - Disconnect terminal block

3046142

<https://www.phoenixcontact.com/in/products/3046142>



ZB 6 CUS - Zack marker strip

0824992

<https://www.phoenixcontact.com/in/products/0824992>



Zack marker strip, can be ordered: Strip, white, labeled according to customer specifications, mounting type: snap into tall marker groove, for terminal block width: 6.2 mm, lettering field size: 6.15 x 10.5 mm, Number of individual labels: 10

ZB 6,LGS:FORTL.ZAHLEN - Zack marker strip

1051016

<https://www.phoenixcontact.com/in/products/1051016>



Zack marker strip, Strip, white, labeled, can be labeled with: CMS-P1-PLOTTER, printed horizontally: consecutive numbers 1 ... 10, 11 ... 20, etc. up to 491 ... 500, mounting type: snapped, for terminal block width: 6.2 mm, lettering field size: 6.15 x 10.5 mm, Number of individual labels: 10

UT 4-TG - Disconnect terminal block

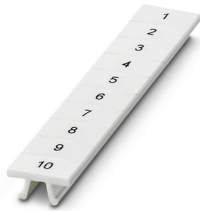
3046142

<https://www.phoenixcontact.com/in/products/3046142>

ZB 6,QR:FORTL.ZAHLEN - Zack marker strip

1051029

<https://www.phoenixcontact.com/in/products/1051029>



Zack marker strip, Strip, white, labeled, can be labeled with: CMS-P1-PLOTTER, Printed vertically: consecutive numbers 1 ... 10, 11 ... 20, etc. up to 491 ... 500, mounting type: snapped, for terminal block width: 6.2 mm, lettering field size: 6.15 x 10.5 mm, Number of individual labels: 10

ZB 6,LGS:GLEICHE ZAHLEN - Zack marker strip

1051032

<https://www.phoenixcontact.com/in/products/1051032>



Zack marker strip, Strip, white, labeled, can be labeled with: CMS-P1-PLOTTER, printed horizontally: Identical numbers 1 or 2, etc. up to 100, mounting type: snapped, for terminal block width: 6.2 mm, lettering field size: 6.15 x 10.5 mm, Number of individual labels: 10

UT 4-TG - Disconnect terminal block

3046142

<https://www.phoenixcontact.com/in/products/3046142>

ZB 6,LGS:L1-N,PE - Marker for terminal blocks

1051414

<https://www.phoenixcontact.com/in/products/1051414>



Marker for terminal blocks, Strip, white, labeled, can be labeled with: CMS-P1-PLOTTER, horizontal: L1, L2, L3, N, PE, L1, L2, L3, N, PE, mounting type: snapped, for terminal block width: 6.2 mm, lettering field size: 6.15 x 10.5 mm, Number of individual labels: 10

ZB 6,LGS:U-N - Marker for terminal blocks

1051430

<https://www.phoenixcontact.com/in/products/1051430>



Marker for terminal blocks, Strip, white, labeled, can be labeled with: CMS-P1-PLOTTER, printed horizontally: U, V, W, N, GND, U, V, W, N, GND, mounting type: snapped, for terminal block width: 6.2 mm, lettering field size: 6.15 x 10.5 mm, Number of individual labels: 10

UT 4-TG - Disconnect terminal block



3046142

<https://www.phoenixcontact.com/in/products/3046142>

UC-TM 6 - Marker for terminal blocks

0818085

<https://www.phoenixcontact.com/in/products/0818085>



Marker for terminal blocks, Sheet, white, unlabeled, can be labeled with: BLUEMARK ID COLOR, BLUEMARK ID, BLUEMARK CLED, PLOTMARK, CMS-P1-PLOTTER, mounting type: snapped, for terminal block width: 6.2 mm, lettering field size: 5.6 x 10.5 mm, Number of individual labels: 80

UC-TM 6 CUS - Marker for terminal blocks

0824589

<https://www.phoenixcontact.com/in/products/0824589>



Marker for terminal blocks, can be ordered: by sheet, white, labeled according to customer specifications, mounting type: snap into tall marker groove, for terminal block width: 6.2 mm, lettering field size: 5.6 x 10.5 mm, Number of individual labels: 80

UT 4-TG - Disconnect terminal block

3046142

<https://www.phoenixcontact.com/in/products/3046142>



UCT-TM 6 - Marker for terminal blocks

0828736

<https://www.phoenixcontact.com/in/products/0828736>



Marker for terminal blocks, Sheet, white, unlabeled, can be labeled with: TOPMARK NEO, TOPMARK LASER, BLUEMARK ID COLOR, BLUEMARK ID, BLUEMARK CLED, THERMOMARK PRIME, THERMOMARK CARD 2.0, THERMOMARK CARD, mounting type: snapped, for terminal block width: 6.2 mm, lettering field size: 5.6 x 10.5 mm, Number of individual labels: 60

UCT-TM 6 CUS - Marker for terminal blocks

0829602

<https://www.phoenixcontact.com/in/products/0829602>



Marker for terminal blocks, can be ordered: by sheet, white, labeled according to customer specifications, mounting type: snap into tall marker groove, for terminal block width: 6.2 mm, lettering field size: 5.6 x 10.5 mm, Number of individual labels: 60

UT 4-TG - Disconnect terminal block

3046142

<https://www.phoenixcontact.com/in/products/3046142>

P-DI - Isolating plugs

3036783

<https://www.phoenixcontact.com/in/products/3036783>

Isolating plugs, length: 10.8 mm, width: 3.5 mm, height: 23.1 mm, color: orange



P-FIX - Feed-through connector

3038956

<https://www.phoenixcontact.com/in/products/3038956>

Feed-through connector, length: 10.5 mm, width: 4 mm, color: gray



UT 4-TG - Disconnect terminal block

3046142

<https://www.phoenixcontact.com/in/products/3046142>

P-CO - Component connector

3036796

<https://www.phoenixcontact.com/in/products/3036796>



Component connector, for installing components that can be individually selected, nominal current: 6 A, pitch: 5.2 mm, length: 24.2 mm, width: 5.1 mm, height: 33.2 mm, number of positions: 1, color: gray

P-CO 1N4007/R-L - Component connector

3032457

<https://www.phoenixcontact.com/in/products/3032457>



Component connector, with diode 1N4007, length: 24.2 mm, width: 5.2 mm, height: 33.3 mm, number of positions: 1, color: gray

UT 4-TG - Disconnect terminal block

3046142

<https://www.phoenixcontact.com/in/products/3046142>



P-CO 1N4007/L-R - Component connector

3032460

<https://www.phoenixcontact.com/in/products/3032460>



Component connector, with diode 1N4007, length: 24.2 mm, width: 5.2 mm, height: 33.3 mm, number of positions: 1, color: gray

P-FU 5X20 - Fuse plug

3036806

<https://www.phoenixcontact.com/in/products/3036806>



Fuse plug, Prior to replacing the cartridge fuse, disconnect the fuse connector from the basic terminal block., nom. voltage: 500 V, nominal current: 6.3 A, connection method: Plug-in connection, fuse type: G / 5 x 20, mounting type: Plug-in mounting, color: black

UT 4-TG - Disconnect terminal block

3046142

<https://www.phoenixcontact.com/in/products/3046142>

P-FU 5X20 LED 24 - Fuse plug

3036819

<https://www.phoenixcontact.com/in/products/3036819>



Fuse plug, Prior to replacing the cartridge fuse, disconnect the fuse connector from the basic terminal block., nom. voltage: 24 V, nominal current: 6.3 A, fuse type: G / 5 x 20, mounting type: Plug-in mounting, color: black

P-FU 5X20 LED 60 - Fuse plug

3036822

<https://www.phoenixcontact.com/in/products/3036822>



Fuse plug, Prior to replacing the cartridge fuse, disconnect the fuse connector from the basic terminal block., nom. voltage: 500 V, nominal current: 6.3 A, fuse type: G / 5 x 20, mounting type: Plug-in mounting, color: black

UT 4-TG - Disconnect terminal block

3046142

<https://www.phoenixcontact.com/in/products/3046142>



P-FU 5X20 LA 250 - Fuse plug

3036835

<https://www.phoenixcontact.com/in/products/3036835>



Fuse plug, Prior to replacing the cartridge fuse, disconnect the fuse connector from the basic terminal block., nom. voltage: 500 V, nominal current: 6.3 A, fuse type: G / 5 x 20, mounting type: Plug-in mounting, color: black

Phoenix Contact 2023 © - all rights reserved

<https://www.phoenixcontact.com>

PHOENIX CONTACT (I) Pvt. Ltd.

A-58/2, Okhla Industrial Area, Phase - II, New Delhi-110 020

+91.1275.71420

info@phoenixcontact.co.in