

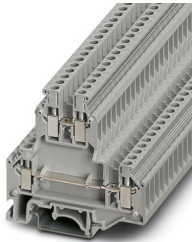
UKKB 5 - Double-level terminal block



2771146

<https://www.phoenixcontact.com/in/products/2771146>

Please be informed that the data shown in this PDF document is generated from our Online Catalog. Please find the complete data in the user documentation. Our General Terms of Use for Downloads are valid.



Double-level terminal block, nom. voltage: 500 V, nominal current: 32 A, connection method: Screw connection, 1st and 2nd level, Rated cross section: 4 mm², cross section: 0.2 mm² - 4 mm², mounting type: NS 35/7,5, NS 35/15, NS 32, color: gray

Your advantages

- Large-surface labeling option

Commercial Data

Item number	2771146
Packing unit	50 pc
Minimum order quantity	50 pc
Sales Key	BE1
Product Key	BE1214
Catalog Page	Page 473 (C-1-2019)
GTIN	4017918068226
Weight per Piece (including packing)	16.75 g
Weight per Piece (excluding packing)	15.22 g
Customs tariff number	85369010
Country of origin	IN

UKKB 5 - Double-level terminal block



2771146

<https://www.phoenixcontact.com/in/products/2771146>

Technical Data

Product properties

Product type	Multi-level terminal block
Number of connections	4
Number of rows	2
Potentials	2

Insulation characteristics

Overvoltage category	III
Degree of pollution	3

Electrical properties

Rated surge voltage	6 kV
Maximum power dissipation for nominal condition	1.02 W

Connection data

Number of connections per level	2
Nominal cross section	4 mm ²

1st and 2nd level

Screw thread	M3
Tightening torque	0.6 ... 0.8 Nm
Stripping length	8 mm
Connection in acc. with standard	IEC 60947-7-1
Conductor cross section rigid	0.2 mm ² ... 4 mm ²
Cross section AWG	24 ... 12 (converted acc. to IEC)
Conductor cross section flexible	0.2 mm ² ... 4 mm ²
Conductor cross section, flexible [AWG]	24 ... 12 (converted acc. to IEC)
Conductor cross-section flexible (ferrule without plastic sleeve)	0.25 mm ² ... 4 mm ²
Flexible conductor cross section (ferrule with plastic sleeve)	0.25 mm ² ... 2.5 mm ²
Cross-section with insertion bridge, rigid	4 mm ²
Cross-section with insertion bridge, flexible	2.5 mm ²
2 conductors with same cross section, solid	0.2 mm ² ... 1.5 mm ²
2 conductors with same cross section, flexible	0.2 mm ² ... 1.5 mm ²
2 conductors with same cross section, flexible, with ferrule without plastic sleeve	0.25 mm ² ... 1.5 mm ²
2 conductors with the same cross section, flexible, with TWIN ferrule with plastic sleeve	0.5 mm ² ... 1.5 mm ²
Nominal current	32 A
Maximum load current	32 A (with 4 mm ² conductor cross section)
Nominal voltage	500 V
Nominal cross section	4 mm ²

Dimensions

UKKB 5 - Double-level terminal block



2771146

<https://www.phoenixcontact.com/in/products/2771146>

Width	6.2 mm
End cover width	2.5 mm
Height NS 35/15	69.5 mm
Height NS 35/7,5	62 mm
Height	2.441 "
Height NS 32	67 mm
Length	67 mm

Material specifications

Color	gray
Flammability rating according to UL 94	V0
Insulating material group	I
Insulating material	PA
Static insulating material application in cold	-60 °C
Temperature index of insulation material (DIN EN 60216-1 (VDE 0304-21))	130 °C
Relative insulation material temperature index (Elec., UL 746 B)	130 °C
Fire protection for rail vehicles (DIN EN 45545-2) R22	HL 1 - HL 3
Fire protection for rail vehicles (DIN EN 45545-2) R23	HL 1 - HL 3
Fire protection for rail vehicles (DIN EN 45545-2) R24	HL 1 - HL 3
Fire protection for rail vehicles (DIN EN 45545-2) R26	HL 1 - HL 3
Calorimetric heat release NFPA 130 (ASTM E 1354)	28 MJ/kg
Surface flammability NFPA 130 (ASTM E 162)	passed
Specific optical density of smoke NFPA 130 (ASTM E 662)	passed
Smoke gas toxicity NFPA 130 (SMP 800C)	passed

Electrical tests

Surge voltage test

Test voltage setpoint	7.3 kV
Result	Test passed

Temperature-rise test

Requirement temperature-rise test	Increase in temperature \leq 45 K
Result	Test passed
Short-time withstand current 4 mm ²	0.48 kA
Result	Test passed

Power-frequency withstand voltage

Test voltage setpoint	1.89 kV
Result	Test passed

Mechanical properties

Mechanical data

Open side panel	Yes
-----------------	-----

UKKB 5 - Double-level terminal block



2771146

<https://www.phoenixcontact.com/in/products/2771146>

Mechanical tests

Mechanical strength

Result	Test passed
--------	-------------

Attachment on the carrier

DIN rail/fixing support	NS 32/NS 35
Test force setpoint	1 N
Result	Test passed

Test for conductor damage and slackening

Rotation speed	10 rpm
Revolutions	135
Conductor cross section/weight	0.2 mm ² / 0.2 kg
	4 mm ² / 0.9 kg
Result	Test passed

Environmental and real-life conditions

Needle-flame test

Time of exposure	30 s
Result	Test passed

Ambient conditions

Ambient temperature (operation)	-60 °C ... 105 °C (max. short-term operating temperature RTI Elec.)
Ambient temperature (storage/transport)	-25 °C ... 60 °C (for a short time, not exceeding 24 h, -60 °C to +70 °C)
Ambient temperature (assembly)	-5 °C ... 70 °C
Ambient temperature (actuation)	-5 °C ... 70 °C
Permissible humidity (storage/transport)	30 % ... 70 %

Standards and regulations

Connection in acc. with standard	IEC 60947-7-1
----------------------------------	---------------

Mounting

Mounting type	NS 35/7,5
	NS 35/15
	NS 32

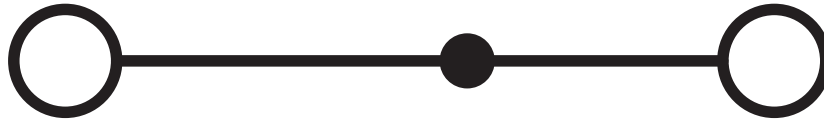
UKKB 5 - Double-level terminal block

2771146

<https://www.phoenixcontact.com/in/products/2771146>

Drawings

Circuit diagram



UKKB 5 - Double-level terminal block




2771146


<https://www.phoenixcontact.com/in/products/2771146>


Approvals

	CSA Approval ID: 13631
---	----------------------------------

	cUL Recognized Approval ID: FILE E 60425			
	Nominal Voltage U_N	Nominal Current I_N	Cross Section AWG	Cross Section mm^2
	600 V	30 A	26 - 10	-


	IECEE CB Scheme Approval ID: NL-39955/A1			
	Nominal Voltage U_N	Nominal Current I_N	Cross Section AWG	Cross Section mm^2
	32 V	500 A	-	- 4

	EAC Approval ID: RU C-DE.BL08.B.00534
---	---

	cULus Recognized Approval ID: E60425			
	Nominal Voltage U_N	Nominal Current I_N	Cross Section AWG	Cross Section mm^2
	300 V	30 A	26 - 10	-
	300 V	30 A	26 - 10	-
	500 V	30 A	26 - 10	-
	600 V	5 A	26 - 10	-

	KEMA-KEUR Approval ID: 71-119849			
	Nominal Voltage U_N	Nominal Current I_N	Cross Section AWG	Cross Section mm^2
	500 V	32 A	-	- 4

	LR Approval ID: 96/20013			
	Nominal Voltage U_N	Nominal Current I_N	Cross Section AWG	Cross Section mm^2
	500 V	32 A	-	- 4

	NK Approval ID: 09 ME 141
---	-------------------------------------

UKKB 5 - Double-level terminal block

2771146

<https://www.phoenixcontact.com/in/products/2771146>



RS

Approval ID: 22.44.01.00083.250

UKKB 5 - Double-level terminal block



2771146

<https://www.phoenixcontact.com/in/products/2771146>

Classifications

ECLASS

ECLASS-11.0

27141120

ETIM

ETIM 8.0

EC000897

UNSPSC

UNSPSC 21.0

39121400

UKKB 5 - Double-level terminal block



2771146

<https://www.phoenixcontact.com/in/products/2771146>

Environmental Product Compliance

China RoHS	Environmentally friendly use period: unlimited = EFUP-e
	No hazardous substances above threshold values

UKKB 5 - Double-level terminal block

2771146

<https://www.phoenixcontact.com/in/products/2771146>

Accessories



Note: Applying some accessories below might limit this product.

IS-K 4 - Bridge bar isolator

1302338

<https://www.phoenixcontact.com/in/products/1302338>



Bridge bar isolator, color: gray

ISSBI 10- 6 - Bridge

0301505

<https://www.phoenixcontact.com/in/products/0301505>



Bridge, pitch: 6 mm, number of positions: 10, color: silver



Max. current carrying capacity: 24 A

UKKB 5 - Double-level terminal block

2771146

<https://www.phoenixcontact.com/in/products/2771146>



LB 10-6 BU - Bridge

0202280

<https://www.phoenixcontact.com/in/products/0202280>



Bridge, pitch: 6 mm, number of positions: 10, color: blue

 Max. current carrying capacity: 32 A

LB 10-6 RD - Bridge

0202293

<https://www.phoenixcontact.com/in/products/0202293>



Bridge, pitch: 6 mm, number of positions: 10, color: red

 Max. current carrying capacity: 32 A

UKKB 5 - Double-level terminal block

2771146

<https://www.phoenixcontact.com/in/products/2771146>



LB 10-6 GY - Bridge

0202358

<https://www.phoenixcontact.com/in/products/0202358>

Bridge, pitch: 6 mm, number of positions: 10, color: gray



 Max. current carrying capacity: 32 A

LB 100-6 GY - Bridge

0202345

<https://www.phoenixcontact.com/in/products/0202345>

Bridge, pitch: 6 mm, number of positions: 100, color: gray



 Max. current carrying capacity: 32 A

UKKB 5 - Double-level terminal block

2771146

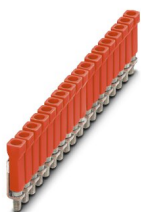
<https://www.phoenixcontact.com/in/products/2771146>



LB 100-6 RD - Bridge

0202316

<https://www.phoenixcontact.com/in/products/0202316>



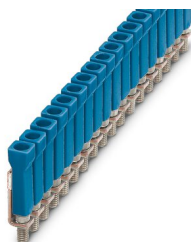
Bridge, number of positions: 100, color: red

 Max. current carrying capacity: 32 A

LB 100-6 BU - Bridge

0202303

<https://www.phoenixcontact.com/in/products/0202303>



Bridge, number of positions: 100, color: blue

 Max. current carrying capacity: 32 A

UKKB 5 - Double-level terminal block

2771146

<https://www.phoenixcontact.com/in/products/2771146>



FBI 10- 6 - Fixed bridge

0203250

<https://www.phoenixcontact.com/in/products/0203250>

Fixed bridge, pitch: 6.2 mm, number of positions: 10, color: silver



 Max. current carrying capacity: 32 A

FBI 20- 6 - Fixed bridge

0201867

<https://www.phoenixcontact.com/in/products/0201867>

Fixed bridge, pitch: 6.2 mm, number of positions: 20, color: silver



 Max. current carrying capacity: 32 A

UKKB 5 - Double-level terminal block

2771146

<https://www.phoenixcontact.com/in/products/2771146>



FBI 100- 6 - Fixed bridge

0201650

<https://www.phoenixcontact.com/in/products/0201650>



Fixed bridge, pitch: 6.2 mm, number of positions: 100, color: silver

 Max. current carrying capacity: 32 A


EB 2- 6 - Insertion bridge

0201155

<https://www.phoenixcontact.com/in/products/0201155>



Insertion bridge, pitch: 6.2 mm, number of positions: 2, color: gray

 Max. current carrying capacity: 30 A

UKKB 5 - Double-level terminal block

2771146

<https://www.phoenixcontact.com/in/products/2771146>




EB 3- 6 - Insertion bridge

0201142

<https://www.phoenixcontact.com/in/products/0201142>

Insertion bridge, pitch: 6.2 mm, number of positions: 3, color: gray



 Max. current carrying capacity: 30 A


EB 10- 6 - Insertion bridge

0201139

<https://www.phoenixcontact.com/in/products/0201139>

Insertion bridge, pitch: 6.2 mm, number of positions: 10, color: gray



 Max. current carrying capacity: 30 A

UKKB 5 - Double-level terminal block

2771146

<https://www.phoenixcontact.com/in/products/2771146>




SBRN 2-7 - Switching jumper

1413230

<https://www.phoenixcontact.com/in/products/1413230>



Switching jumper, pitch: 7 mm, number of positions: 2, color: silver

 Max. current carrying capacity: 30 A


USBR 2-7 - Switching jumper

2303239

<https://www.phoenixcontact.com/in/products/2303239>



Switching jumper, pitch: 7 mm, number of positions: 2, color: silver

 Max. current carrying capacity: 30 A

UKKB 5 - Double-level terminal block

2771146

<https://www.phoenixcontact.com/in/products/2771146>




USBRJ 2-7 - Switching jumper

2305538

<https://www.phoenixcontact.com/in/products/2305538>



Switching jumper, number of positions: 2, color: silver

 Max. current carrying capacity: 30 A

DP-UKKB 3/ 5 - Spacer plate

2770804

<https://www.phoenixcontact.com/in/products/2770804>

Spacer plate, to compensate for level offsets, length: 67 mm, width: 2.5 mm, height: 25 mm, color: gray



UKKB 5 - Double-level terminal block

2771146

<https://www.phoenixcontact.com/in/products/2771146>



DG-UKKB 3/ 5 - Spacer plate

2770859

<https://www.phoenixcontact.com/in/products/2770859>



Spacer plate, to compensate for level offsets, length: 67 mm, width: 2.5 mm, color: gray

D-UKKB 3/5 - End cover

2771023

<https://www.phoenixcontact.com/in/products/2771023>



End cover, length: 67.2 mm, width: 2.5 mm, height: 52 mm, color: gray

UKKB 5 - Double-level terminal block

2771146

<https://www.phoenixcontact.com/in/products/2771146>



FB-150 METER - Fixed bridge

0201595

<https://www.phoenixcontact.com/in/products/0201595>



Cross connection rail, for fixed bridging of identical inputs and outputs, made of Cu, nickel-plated, 1 m long

KSS 3- 6 - Short-circuit connector

0309523

<https://www.phoenixcontact.com/in/products/0309523>



Short-circuit connector, pitch: 6 mm, number of positions: 3, color: black

UKKB 5 - Double-level terminal block

2771146

<https://www.phoenixcontact.com/in/products/2771146>



KSS 6 - Short-circuit connector

0301547

<https://www.phoenixcontact.com/in/products/0301547>



Short-circuit connector, pitch: 6 mm, number of positions: 2, color: black

PS-UKK 5 - Test plugs

3000625

<https://www.phoenixcontact.com/in/products/3000625>



Test plugs, number of positions: 10, fuse type: , mounting type: , , color: red

UKKB 5 - Double-level terminal block

2771146

<https://www.phoenixcontact.com/in/products/2771146>



PS-UKK/E - Test plugs

3000641

<https://www.phoenixcontact.com/in/products/3000641>



Test plugs, number of positions: 1, fuse type: , mounting type: , , , color: red

RPS - Reducing plug

0201647

<https://www.phoenixcontact.com/in/products/0201647>



Reducing plug, number of positions: 1, fuse type: , mounting type: , , , color: gray

UKKB 5 - Double-level terminal block

2771146

<https://www.phoenixcontact.com/in/products/2771146>

TS-KK 3 - Separating plate

2770215

<https://www.phoenixcontact.com/in/products/2770215>



Separating plate, length: 14 mm, width: 0.5 mm, height: 16 mm, color: gray

ATP-UKKB 3 - Partition plate

2771065

<https://www.phoenixcontact.com/in/products/2771065>



Partition plate, length: 75 mm, width: 2.5 mm, height: 67 mm, color: gray

UKKB 5 - Double-level terminal block

2771146

<https://www.phoenixcontact.com/in/products/2771146>



SBS 6:UNBEDRUCKT - Marker card

1007222

<https://www.phoenixcontact.com/in/products/1007222>



Marker card, Card, white, unlabeled, can be labeled with: Marker pen, mounting type: snapped, snap into flat marker groove, for terminal block width: 6 mm, lettering field size: 6 x 6.1 mm, Number of individual labels: 250

SF-SL 0,6X3,5-100 S-VDE - Screwdriver

1212587

<https://www.phoenixcontact.com/in/products/1212587>



Actuation tool, for ST terminal blocks, VDE insulated, with slimmer insulation integrated in the blade, also suitable for use as a bladed screwdriver, size: 0.6 x 3.5 x 100 mm, 2-component grip, with non-slip grip

UKKB 5 - Double-level terminal block

2771146

<https://www.phoenixcontact.com/in/products/2771146>



NS 32 PERF 2000MM-VPE 10 - DIN rail perforated

1201002

<https://www.phoenixcontact.com/in/products/1201002>



DIN rail perforated, acc. to EN 60715, material: Steel, galvanized, passivated with a thick layer, G profile, color: silver, Pack of 10 (20 m)

NS 32 UNPERF 2000MM-VPE 10 - DIN rail, unperforated

1201015

<https://www.phoenixcontact.com/in/products/1201015>



DIN rail, unperforated, acc. to EN 60715, material: Steel, galvanized, passivated with a thick layer, G profile, color: silver, Pack of 10 (20 m)

UKKB 5 - Double-level terminal block

2771146

<https://www.phoenixcontact.com/in/products/2771146>



NS 35/ 7,5 PERF 2000MM - DIN rail perforated

0801733

<https://www.phoenixcontact.com/in/products/0801733>



DIN rail perforated, acc. to EN 60715, material: Steel, galvanized, passivated with a thick layer, Standard profile, color: silver, Pack of 25 (50 m)

NS 35/ 7,5 UNPERF 2000MM - DIN rail, unperforated

0801681

<https://www.phoenixcontact.com/in/products/0801681>



DIN rail, unperforated, acc. to EN 60715, material: Steel, galvanized, passivated with a thick layer, Standard profile, color: silver, Pack of 25 (50 m)

UKKB 5 - Double-level terminal block

2771146

<https://www.phoenixcontact.com/in/products/2771146>



NS 35/ 7,5 WH PERF 2000MM - DIN rail perforated

1204119

<https://www.phoenixcontact.com/in/products/1204119>



DIN rail perforated, acc. to EN 60715, material: Steel, Galvanized, white passivated, Standard profile, color: silver, Pack of 25 (50 m)

NS 35/ 7,5 WH UNPERF 2000MM-VPE 10 - DIN rail, unperforated

1204122

<https://www.phoenixcontact.com/in/products/1204122>



DIN rail, unperforated, acc. to EN 60715, material: Steel, Galvanized, white passivated, Standard profile, color: silver, Pack of 10 (20 m)

UKKB 5 - Double-level terminal block

2771146

<https://www.phoenixcontact.com/in/products/2771146>



NS 35/ 7,5 AL UNPERF 2000MM - DIN rail, unperforated

0801704

<https://www.phoenixcontact.com/in/products/0801704>



DIN rail, unperforated, acc. to EN 60715, material: Aluminum, uncoated, Standard profile, color: silver, Pack of 25 (50 m)

NS 35/ 7,5 ZN PERF 2000MM - DIN rail perforated

1206421

<https://www.phoenixcontact.com/in/products/1206421>



DIN rail perforated, acc. to EN 60715, material: Steel, galvanized, Standard profile, color: silver, Pack of 25 (50 m)

UKKB 5 - Double-level terminal block

2771146

<https://www.phoenixcontact.com/in/products/2771146>



NS 35/ 7,5 ZN UNPERF 2000MM - DIN rail, unperforated

1206434

<https://www.phoenixcontact.com/in/products/1206434>



DIN rail, unperforated, acc. to EN 60715, material: Steel, galvanized, Standard profile, color: silver, Pack of 25 (50 m)

NS 35/ 7,5 CU UNPERF 2000MM-VPE 10 - DIN rail, unperforated

0801762

<https://www.phoenixcontact.com/in/products/0801762>



DIN rail, unperforated, acc. to EN 60715, material: Copper, uncoated, Standard profile, color: copper-colored, Pack of 10 (20 m)

UKKB 5 - Double-level terminal block

2771146

<https://www.phoenixcontact.com/in/products/2771146>



NS 35/ 7,5 CAP - End cap

1206560

<https://www.phoenixcontact.com/in/products/1206560>

DIN rail end piece, for DIN rail NS 35/7.5



NS 35/15 PERF 2000MM - DIN rail perforated

1201730

<https://www.phoenixcontact.com/in/products/1201730>



DIN rail perforated, similar to EN 60715, material: Steel, galvanized, passivated with a thick layer, Standard profile, color: silver, Pack of 25 (50 m)

UKKB 5 - Double-level terminal block

2771146

<https://www.phoenixcontact.com/in/products/2771146>



NS 35/15 UNPERF 2000MM - DIN rail, unperforated

1201714

<https://www.phoenixcontact.com/in/products/1201714>



DIN rail, unperforated, similar to EN 60715, material: Steel, galvanized, passivated with a thick layer, Standard profile, color: silver, Pack of 25 (50 m)

NS 35/15 WH PERF 2000MM - DIN rail perforated

0806602

<https://www.phoenixcontact.com/in/products/0806602>



DIN rail perforated, similar to EN 60715, material: Steel, Galvanized, white passivated, Standard profile, color: white, Pack of 25 (50 m)

UKKB 5 - Double-level terminal block

2771146

<https://www.phoenixcontact.com/in/products/2771146>



NS 35/15 WH UNPERF 2000MM-VPE 10 - DIN rail, unperforated

1204135

<https://www.phoenixcontact.com/in/products/1204135>



DIN rail, unperforated, similar to EN 60715, material: Steel, Galvanized, white passivated, Standard profile, color: silver, Pack of 10 (20 m)

NS 35/15 AL UNPERF 2000MM - DIN rail, unperforated

1201756

<https://www.phoenixcontact.com/in/products/1201756>



DIN rail, unperforated, similar to EN 60715, material: Aluminum, uncoated, Standard profile, color: silver

UKKB 5 - Double-level terminal block

2771146

<https://www.phoenixcontact.com/in/products/2771146>



NS 35/15 ZN PERF 2000MM - DIN rail perforated

1206599

<https://www.phoenixcontact.com/in/products/1206599>



DIN rail perforated, similar to EN 60715, material: Steel, galvanized, Standard profile, color: silver, Pack of 25 (50 m)

NS 35/15 ZN UNPERF 2000MM - DIN rail, unperforated

1206586

<https://www.phoenixcontact.com/in/products/1206586>



DIN rail, unperforated, similar to EN 60715, material: Steel, galvanized, Standard profile, color: silver, Pack of 25 (50 m)

UKKB 5 - Double-level terminal block

2771146

<https://www.phoenixcontact.com/in/products/2771146>



NS 35/15 CU UNPERF 2000MM-VPE 10 - DIN rail, unperforated

1201895

<https://www.phoenixcontact.com/in/products/1201895>



DIN rail, unperforated, similar to EN 60715, material: Copper, uncoated, Standard profile, color: copper-colored, Pack of 10 (20 m)

NS 35/15 CAP - End cap

1206573

<https://www.phoenixcontact.com/in/products/1206573>

DIN rail end piece, for DIN rail NS 35/15



UKKB 5 - Double-level terminal block

2771146

<https://www.phoenixcontact.com/in/products/2771146>



NS 35/15-2,3 UNPERF 2000MM-VPE 10 - DIN rail, unperforated

1201798

<https://www.phoenixcontact.com/in/products/1201798>



DIN rail, unperforated, acc. to EN 60715, material: Steel, galvanized, passivated with a thick layer, Standard profile 2.3 mm, color: silver, Pack of 10 (20 m)

ZB 6:UNBEDRUCKT - Zack marker strip

1051003

<https://www.phoenixcontact.com/in/products/1051003>



Zack marker strip, Strip, white, unlabeled, can be labeled with: PLOTMARK, CMS-P1-PLOTTER, mounting type: snapped, for terminal block width: 6.2 mm, lettering field size: 6.15 x 10.5 mm, Number of individual labels: 10

UKKB 5 - Double-level terminal block

2771146

<https://www.phoenixcontact.com/in/products/2771146>

ZB 6 CUS - Zack marker strip

0824992

<https://www.phoenixcontact.com/in/products/0824992>



Zack marker strip, can be ordered: Strip, white, labeled according to customer specifications, mounting type: snap into tall marker groove, for terminal block width: 6.2 mm, lettering field size: 6.15 x 10.5 mm, Number of individual labels: 10

ZB 6,LGS:FORTL.ZAHLEN - Zack marker strip

1051016

<https://www.phoenixcontact.com/in/products/1051016>



Zack marker strip, Strip, white, labeled, can be labeled with: CMS-P1-PLOTTER, printed horizontally: consecutive numbers 1 ... 10, 11 ... 20, etc. up to 491 ... 500, mounting type: snapped, for terminal block width: 6.2 mm, lettering field size: 6.15 x 10.5 mm, Number of individual labels: 10

UKKB 5 - Double-level terminal block

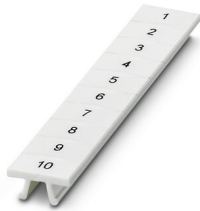
2771146

<https://www.phoenixcontact.com/in/products/2771146>

ZB 6,QR:FORTL.ZAHLEN - Zack marker strip

1051029

<https://www.phoenixcontact.com/in/products/1051029>



Zack marker strip, Strip, white, labeled, can be labeled with: CMS-P1-PLOTTER, Printed vertically: consecutive numbers 1 ... 10, 11 ... 20, etc. up to 491 ... 500, mounting type: snapped, for terminal block width: 6.2 mm, lettering field size: 6.15 x 10.5 mm, Number of individual labels: 10

ZB 6,LGS:GLEICHE ZAHLEN - Zack marker strip

1051032

<https://www.phoenixcontact.com/in/products/1051032>



Zack marker strip, Strip, white, labeled, can be labeled with: CMS-P1-PLOTTER, printed horizontally: Identical numbers 1 or 2, etc. up to 100, mounting type: snapped, for terminal block width: 6.2 mm, lettering field size: 6.15 x 10.5 mm, Number of individual labels: 10

UKKB 5 - Double-level terminal block

2771146

<https://www.phoenixcontact.com/in/products/2771146>

ZB 6,LGS:L1-N,PE - Marker for terminal blocks

1051414

<https://www.phoenixcontact.com/in/products/1051414>



Marker for terminal blocks, Strip, white, labeled, can be labeled with: CMS-P1-PLOTTER, horizontal: L1, L2, L3, N, PE, L1, L2, L3, N, PE, mounting type: snapped, for terminal block width: 6.2 mm, lettering field size: 6.15 x 10.5 mm, Number of individual labels: 10

ZB 6,LGS:U-N - Marker for terminal blocks

1051430

<https://www.phoenixcontact.com/in/products/1051430>



Marker for terminal blocks, Strip, white, labeled, can be labeled with: CMS-P1-PLOTTER, printed horizontally: U, V, W, N, GND, U, V, W, N, GND, mounting type: snapped, for terminal block width: 6.2 mm, lettering field size: 6.15 x 10.5 mm, Number of individual labels: 10

UKKB 5 - Double-level terminal block

2771146

<https://www.phoenixcontact.com/in/products/2771146>



UC-TM 6 - Marker for terminal blocks

0818085

<https://www.phoenixcontact.com/in/products/0818085>



Marker for terminal blocks, Sheet, white, unlabeled, can be labeled with: BLUEMARK ID COLOR, BLUEMARK ID, BLUEMARK CLED, PLOTMARK, CMS-P1-PLOTTER, mounting type: snapped, for terminal block width: 6.2 mm, lettering field size: 5.6 x 10.5 mm, Number of individual labels: 80

UC-TM 6 CUS - Marker for terminal blocks

0824589

<https://www.phoenixcontact.com/in/products/0824589>



Marker for terminal blocks, can be ordered: by sheet, white, labeled according to customer specifications, mounting type: snap into tall marker groove, for terminal block width: 6.2 mm, lettering field size: 5.6 x 10.5 mm, Number of individual labels: 80

UKKB 5 - Double-level terminal block

2771146

<https://www.phoenixcontact.com/in/products/2771146>



UCT-TM 6 - Marker for terminal blocks

0828736

<https://www.phoenixcontact.com/in/products/0828736>



Marker for terminal blocks, Sheet, white, unlabeled, can be labeled with: TOPMARK NEO, TOPMARK LASER, BLUEMARK ID COLOR, BLUEMARK ID, BLUEMARK CLED, THERMOMARK PRIME, THERMOMARK CARD 2.0, THERMOMARK CARD, mounting type: snapped, for terminal block width: 6.2 mm, lettering field size: 5.6 x 10.5 mm, Number of individual labels: 60

UCT-TM 6 CUS - Marker for terminal blocks

0829602

<https://www.phoenixcontact.com/in/products/0829602>



Marker for terminal blocks, can be ordered: by sheet, white, labeled according to customer specifications, mounting type: snap into tall marker groove, for terminal block width: 6.2 mm, lettering field size: 5.6 x 10.5 mm, Number of individual labels: 60

UKKB 5 - Double-level terminal block

2771146

<https://www.phoenixcontact.com/in/products/2771146>



CLIPFIX 35 - End clamp

3022218

<https://www.phoenixcontact.com/in/products/3022218>



Quick mounting end clamp for NS 35/7,5 DIN rail or NS 35/15 DIN rail, with marking option, width: 9.5 mm, color: gray

CLIPFIX 35-5 - End clamp

3022276

<https://www.phoenixcontact.com/in/products/3022276>



Quick mounting end clamp for NS 35/7,5 DIN rail or NS 35/15 DIN rail, with marking option, with parking option for FBS...5, FBS...6, KSS 5, KSS 6, width: 5.15 mm, color: gray

UKKB 5 - Double-level terminal block

2771146

<https://www.phoenixcontact.com/in/products/2771146>

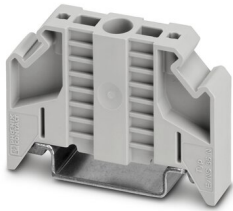


E/NS 35 N - End clamp

0800886

<https://www.phoenixcontact.com/in/products/0800886>

End clamp, width: 9.5 mm, color: gray



PSBJ 3/13/4 - Female test connector

0201304

<https://www.phoenixcontact.com/in/products/0201304>

Female test connector, number of positions: 1, fuse type: , mounting type: , , ,
color: silver



UKKB 5 - Double-level terminal block

2771146

<https://www.phoenixcontact.com/in/products/2771146>

PSB 3/10/4 - Female test connector

0601292

<https://www.phoenixcontact.com/in/products/0601292>



Female test connector, number of positions: 1, fuse type: , mounting type: , , ,
color: silver

E/UK - End clamp

1201442

<https://www.phoenixcontact.com/in/products/1201442>



End clamp, material: PA, color: gray, Mounting on a DIN rail NS 32 or NS 35

UKKB 5 - Double-level terminal block



2771146

<https://www.phoenixcontact.com/in/products/2771146>

E/UK 1 - End clamp

1201413

<https://www.phoenixcontact.com/in/products/1201413>



End clamps, for supporting the ends of double-level and three-level terminal blocks, width: 10 mm, color: gray

Phoenix Contact 2023 © - all rights reserved

<https://www.phoenixcontact.com>

PHOENIX CONTACT (I) Pvt. Ltd.

A-58/2, Okhla Industrial Area, Phase - II, New Delhi-110 020

+91.1275.71420

info@phoenixcontact.co.in