

IEC Appliance Inlet C14, Snap-in Mounting, Front Side, Solder or Quick-connect Terminal



6100-4



Description

- Panel Mount:
Snap-in version from front side
- 1 Function:
- Appliance Inlet, Pin temperature 70 °C, Protection class I
- Solder terminals or quick connect terminals

Approvals

- VDE Certificate Number: 40015595
- UL File Number: E96454

Other versions on request

- Other panel thickness
- Types for enhanced glow wire test requirements acc. IEC 60695-2-12 and -13 for the use in unattended household equipment acc. IEC 60335-1

References

- Alternative: protection class II version [6102-5](#)
- Alternative: version with line filter [5110](#); [5120](#)

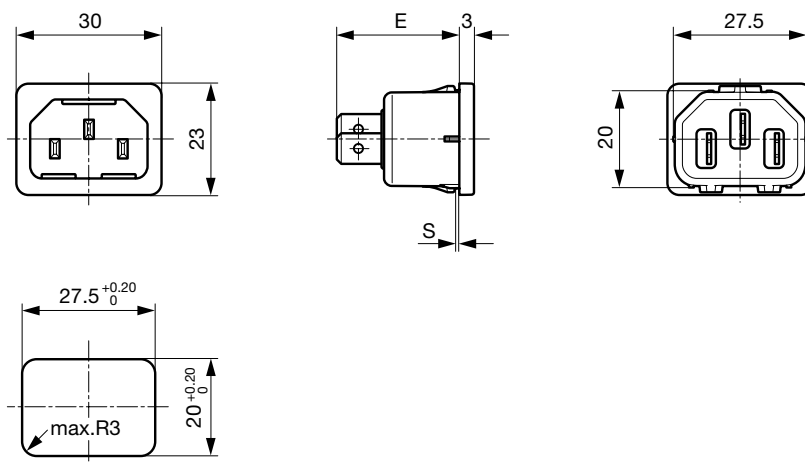
Weblinks

[pdf-datasheet](#), [html-datasheet](#), [General Product Information](#), [Approvals](#), [CE declaration of conformity](#), [RoHS](#), [CHINA-RoHS](#), [REACH](#), [Mating Connectors](#), [e-Shop](#), [SCHURTER-Stock-Check](#), [Distributor-Stock-Check](#), [CAD-Drawings](#), [Accessories](#), [Wire Harnessing](#), [Detailed request for product](#)

Technical Data

| | | | |
|---------------------------|---|-----------------|---|
| Ratings IEC | 10A / 250VAC; 50Hz | Appliance Inlet | C14 acc. to IEC 60320-1, |
| Ratings UL/CSA | 15A / 250VAC; 60Hz | | UL 498, CSA C22.2 no. 42 (for cold |
| Dielectric Strength | > 2kVAC between L-N > 2kVAC between L/N-PE (1 min/50Hz) | | conditions) pin-temperature 70 °C, 10A, |
| Allowable Operation Temp. | -25 °C to 70 °C | | Protection Class I |
| Degree of Protection | from front side IP 30 acc. to IEC 60529 | | |
| Protection Class | Suitable for appliances with protection class I acc. to IEC 61140 | | |
| Terminal | Solder terminals or quick connect terminals | | |
| Panel Thickness s | Snap-in: 1/1.2/1.5/2/2.5/3 mm | | |
| Material: Housing | Thermoplastic, black, UL 94V-0 | | |

Dimensions



- E: Solder terminals 22.5 mm
- E: Quick connect terminals 25.5 mm
- S: 1.0; 1.2; 1.5; 2.0; 2.5; 3.0 mm

All Variants

| Type | Protection Class | Panel mounting | Panel Thickness s [mm] | Terminal | Order Number |
|--------|------------------|----------------|------------------------|--------------------------------------|--------------|
| 6100-4 | I | Snap-in | 1 | Quick connect terminals 4.8 x 0.8 mm | 6100.4210 |
| 6100-4 | I | Snap-in | 1.2 | Quick connect terminals 4.8 x 0.8 mm | 6100.4212 |
| 6100-4 | I | Snap-in | 1.5 | Quick connect terminals 4.8 x 0.8 mm | 6100.4215 |
| 6100-4 | I | Snap-in | 1.6 | Quick connect terminals 4.8 x 0.8 mm | 6100.4216 |
| 6100-4 | I | Snap-in | 2 | Quick connect terminals 4.8 x 0.8 mm | 6100.4220 |
| 6100-4 | I | Snap-in | 2.5 | Quick connect terminals 4.8 x 0.8 mm | 6100.4225 |
| 6100-4 | I | Snap-in | 3 | Quick connect terminals 4.8 x 0.8 mm | 6100.4230 |
| 6100-4 | I | Snap-in | 1 | Quick connect terminals 6.3 x 0.8 mm | 6100.4310 |
| 6100-4 | I | Snap-in | 1.2 | Quick connect terminals 6.3 x 0.8 mm | 6100.4312 |
| 6100-4 | I | Snap-in | 1.5 | Quick connect terminals 6.3 x 0.8 mm | 6100.4315 |
| 6100-4 | I | Snap-in | 2 | Quick connect terminals 6.3 x 0.8 mm | 6100.4320 |
| 6100-4 | I | Snap-in | 2.5 | Quick connect terminals 6.3 x 0.8 mm | 6100.4325 |
| 6100-4 | I | Snap-in | 3 | Quick connect terminals 6.3 x 0.8 mm | 6100.4330 |
| 6100-4 | I | Snap-in | 1 | Solder terminals 3.8 x 0.8 mm | 6100.4110 |
| 6100-4 | I | Snap-in | 1.2 | Solder terminals 3.8 x 0.8 mm | 6100.4112 |
| 6100-4 | I | Snap-in | 1.5 | Solder terminals 3.8 x 0.8 mm | 6100.4115 |
| 6100-4 | I | Snap-in | 2 | Solder terminals 3.8 x 0.8 mm | 6100.4120 |
| 6100-4 | I | Snap-in | 2.5 | Solder terminals 3.8 x 0.8 mm | 6100.4125 |
| 6100-4 | I | Snap-in | 3 | Solder terminals 3.8 x 0.8 mm | 6100.4130 |

Most Popular.

Availability for all products can be searched real-time:<http://www.schurter.com/en/Stock-Check/Stock-Check-SCHURTER>

Articles for enhanced glow wire test requirements acc. IEC 60695-2-12 and -13 can be ordered with ending ".15" (xxxx.xxx.15). They are suitable for the use in unattended household equipment acc. IEC 60335-1.

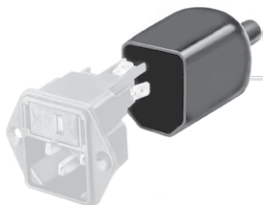
Packaging unit 50 Pcs

Accessories

Description



Wire Harness
Wire harness for SCHURTER products



Assorted Covers
Rear Cover

0859.0048

4311.9401

4311.9402



Cord retaining kits
Cord retaining strain relief

Flat head, Z

0888.0021

Countersunk, C

4700.0003

Mating Outlets/Connectors

Category / Description



[Appliance Outlet Overview complete](#)

| | |
|---|------|
| IEC Appliance Outlet F, Screw-on Mounting, Front Side, Solder Terminal | 4787 |
| IEC Appliance Outlet F, Snap-in Mounting, Front Side, Solder or Quick-connect Terminal | 4788 |
| IEC Appliance Outlet F or H, Screw-on Mounting, Front Side, Solder, PCB or Quick-connect Terminal | 5091 |

[Appliance Outlet further types to 6100-4](#)



[Connector Overview complete](#)

| | |
|--|---------|
| 4782 Mounting: Power Cord, 3 x 1 mm ² / 3 x 18 AWG, Cable, Connector: IEC C13 | 4782 |
| 4022 Mounting: Power Supply Cord, 3 x 1.5 mm ² , Screw clamps, Connector: IEC C13 | 4022 |
| 4785 Mounting: Power Cord, 3 x 1 mm ² / 3 x 18 AWG, Cable, Connector: IEC C13 | 4785 |
| 4300-06 Mounting: Power Cord, 3 x 1 mm ² / 3 x 18 AWG, Cable, Connector: IEC C13 | 4300-06 |
| 4012 Mounting: Power Supply Cord, 3 x 1.5 mm ² , Screw clamps, Connector: IEC C13 | 4012 |

[Connector further types to 6100-4](#) ...