

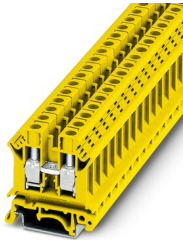
TB 10 EI YE - Feed-through terminal block



3000864

<https://www.phoenixcontact.com/ae/products/3000864>

Please be informed that the data shown in this PDF document is generated from our Online Catalog. Please find the complete data in the user documentation. Our General Terms of Use for Downloads are valid.



Feed-through terminal block, nom. voltage: 1000 V, nominal current: 57 A, number of connections: 2, connection method: Screw connection, Rated cross section: 10 mm², cross section: 1.5 mm² - 16 mm², mounting type: NS 35/7,5, NS 35/15, NS 32, color: yellow

Commercial Data

Item number	3000864
Packing unit	50 pc
Minimum order quantity	50 pc
Sales Key	BE1
Product Key	BE1411
GTIN	4055626646022
Weight per Piece (including packing)	22.22 g
Weight per Piece (excluding packing)	22.22 g
Customs tariff number	85369010
Country of origin	IN

TB 10 EI YE - Feed-through terminal block



3000864

<https://www.phoenixcontact.com/ae/products/3000864>

Technical Data

Product properties

Product type	Feed-through terminal block
Number of connections	2
Number of rows	1
Potentials	1

Insulation characteristics

Overvoltage category	III
Degree of pollution	3

Electrical properties

Rated surge voltage	8 kV
Maximum power dissipation for nominal condition	1.82 W

Connection data

Number of connections per level	2
Nominal cross section	10 mm ²

Level 1 above 1 below 1

Screw thread	M4
Tightening torque	1.2 Nm
Stripping length	10 mm
Connection in acc. with standard	IEC 60947-7-1
Conductor cross section rigid	1.5 mm ² ... 16 mm ²
Cross section AWG	16 ... 6 (converted acc. to IEC)
Conductor cross section flexible	1.5 mm ² ... 10 mm ²
Conductor cross section, flexible [AWG]	16 ... 8 (converted acc. to IEC)
Conductor cross-section flexible (ferrule without plastic sleeve)	1.5 mm ² ... 10 mm ²
Flexible conductor cross section (ferrule with plastic sleeve)	1.5 mm ² ... 6 mm ²
2 conductors with same cross section, solid	1.5 mm ² ... 4 mm ²
2 conductors with the same cross-section AWG rigid	16 ... 12 (converted acc. to IEC)
2 conductors with same cross section, flexible	1.5 mm ² ... 4 mm ²
2 conductors with the same cross-section AWG flexible	16 ... 12 (converted acc. to IEC)
2 conductors with same cross section, flexible, with ferrule without plastic sleeve	1.5 mm ² ... 2.5 mm ²
Nominal current	57 A
Maximum load current	57 A
Nominal voltage	1000 V (in the case of enclosed clamping space)
Nominal cross section	10 mm ²

Dimensions

Width	10.2 mm
End cover width	1.8 mm

TB 10 EI YE - Feed-through terminal block



3000864

<https://www.phoenixcontact.com/ae/products/3000864>

Height	42.8 mm
Height NS 35/15	54.5 mm
Height NS 35/7,5	47 mm
Height	1.85 "
Height NS 32	52.8 mm
Length	42.8 mm

Material specifications

Color	yellow
Flammability rating according to UL 94	V2
Insulating material group	I
Insulating material	PA
Static insulating material application in cold	-40 °C
Temperature index of insulation material (DIN EN 60216-1 (VDE 0304-21))	125 °C
Relative insulation material temperature index (Elec., UL 746 B)	125 °C

Electrical tests

Surge voltage test

Test voltage setpoint	9.8 kV
Result	Test passed

Temperature-rise test

Requirement temperature-rise test	Increase in temperature ≤ 45 K
Result	Test passed
Short-time withstand current 10 mm ²	1.2 kA
Result	Test passed

Power-frequency withstand voltage

Test voltage setpoint	2.2 kV
Result	Test passed

Mechanical properties

Mechanical data

Open side panel	Yes
-----------------	-----

Mechanical tests

Mechanical strength

Result	Test passed
--------	-------------

Attachment on the carrier

Result	Test passed
--------	-------------

Test for conductor damage and slackening

Rotation speed	10 rpm
----------------	--------

TB 10 EI YE - Feed-through terminal block



3000864

<https://www.phoenixcontact.com/ae/products/3000864>

Revolutions	135
Conductor cross section/weight	1.5 mm ² / 0.4 kg
	10 mm ² / 2 kg
	16 mm ² / 2.9 kg
Result	Test passed

Environmental and real-life conditions

Needle-flame test

Time of exposure	30 s
Result	Test passed

Oscillation/broadband noise

Specification	DIN EN 50155 (VDE 0115-200):2018-05
Spectrum	Service life test category 2, bogie-mounted
Frequency	$f_1 = 5 \text{ Hz}$ to $f_2 = 250 \text{ Hz}$
ASD level	6.12 (m/s ²) ² /Hz
Acceleration	3.12g
Test duration per axis	5 h
Test directions	X-, Y- and Z-axis
Result	Test passed

Shocks

Pulse shape	Half-sine
Acceleration	30g
Shock duration	18 ms
Number of shocks per direction	3
Test directions	X-, Y- and Z-axis (pos. and neg.)
Result	Test passed

Ambient conditions

Ambient temperature (operation)	-60 °C ... 105 °C (max. short-term operating temperature RTI Elec.)
Ambient temperature (storage/transport)	-25 °C ... 60 °C (for a short time, not exceeding 24 h, -60 °C to +70 °C)
Ambient temperature (assembly)	-5 °C ... 70 °C
Ambient temperature (actuation)	-5 °C ... 70 °C
Permissible humidity (storage/transport)	30 % ... 70 %

Standards and regulations

Connection in acc. with standard	IEC 60947-7-1
----------------------------------	---------------

Mounting

Mounting type	NS 35/7,5
	NS 35/15
	NS 32

TB 10 EI YE - Feed-through terminal block

3000864

<https://www.phoenixcontact.com/ae/products/3000864>



Drawings

Circuit diagram



TB 10 EI YE - Feed-through terminal block




3000864

<https://www.phoenixcontact.com/ae/products/3000864>

Approvals

To download certificates, visit the product detail page: <https://www.phoenixcontact.com/ae/products/3000864>

 UL Recognized Approval ID: E60425				
	Nominal Voltage U_N	Nominal Current I_N	Cross Section AWG	Cross Section mm^2
Use group B	600 V	50 A	16 - 6	-
Use group C	600 V	50 A	16 - 6	-
Use group F	600 V	50 A	16 - 6	-
Use group D	600 V	5 A	16 - 6	-

TB 10 EI YE - Feed-through terminal block



3000864

<https://www.phoenixcontact.com/ae/products/3000864>

Classifications

ECLASS

ECLASS-11.0	27141120
ECLASS-13.0	27250101

ETIM

ETIM 7.0	EC000897
----------	----------

UNSPSC

UNSPSC 21.0	39121410
-------------	----------

TB 10 EI YE - Feed-through terminal block



3000864

<https://www.phoenixcontact.com/ae/products/3000864>

Environmental Product Compliance

China RoHS	Environmentally friendly use period: unlimited = EFUP-e No hazardous substances above threshold values
------------	---

TB 10 EI YE - Feed-through terminal block



3000864

<https://www.phoenixcontact.com/ae/products/3000864>

Accessories

SCBI 10-10 - Fixed bridge

3246146

<https://www.phoenixcontact.com/ae/products/3246146>

Fixed bridge, number of positions: 10, color: silver



INB 10-10 - Insertion bridge

3246201

<https://www.phoenixcontact.com/ae/products/3246201>

Insertion bridge, pitch: 10 mm, number of positions: 10, color: gray



TB 10 EI YE - Feed-through terminal block



3000864

<https://www.phoenixcontact.com/ae/products/3000864>

D-TB 4/10 E - End cover

3246104

<https://www.phoenixcontact.com/ae/products/3246104>



End cover, length: 42.5 mm, width: 1.5 mm, height: 35.9 mm, color: dark gray

TS-TB - Separating plate

3062838

<https://www.phoenixcontact.com/ae/products/3062838>



Separating plate, for electrical isolation of neighboring bridges in the terminal center, length: 22 mm, height: 22 mm, color: dark gray

TB 10 EI YE - Feed-through terminal block

3000864

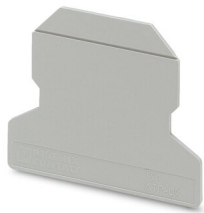
<https://www.phoenixcontact.com/ae/products/3000864>



ATP-TB - Partition plate

3046272

<https://www.phoenixcontact.com/ae/products/3046272>



Partition plate, length: 56 mm, width: 3 mm, height: 45.7 mm, color: dark gray

TPS 4/7/6 - Female test connector

3246243

<https://www.phoenixcontact.com/ae/products/3246243>



Female test connector, for 4 mm test plugs, for screwing into the bridge shaft, number of positions: 1, color: silver

TB 10 EI YE - Feed-through terminal block

3000864

<https://www.phoenixcontact.com/ae/products/3000864>



SZS 1,0X4,0 VDE - Screwdriver

1205066

<https://www.phoenixcontact.com/ae/products/1205066>



Screwdriver, slot-headed, VDE insulated, size: 1.0 x 4.0 x 100 mm, 2-component grip, with non-slip grip

E/TB - End clamp

3246966

<https://www.phoenixcontact.com/ae/products/3246966>



End clamp, for assembly on NS 32 or NS 35/7.5 DIN rail

TB 10 EI YE - Feed-through terminal block

3000864

<https://www.phoenixcontact.com/ae/products/3000864>



NS 32 PERF 2000MM-VPE 10 - DIN rail perforated

1201002

<https://www.phoenixcontact.com/ae/products/1201002>



DIN rail perforated, acc. to EN 60715, material: Steel, galvanized, passivated with a thick layer, G profile, color: silver, Pack of 10 (20 m)

NS 32 UNPERF 2000MM-VPE 10 - DIN rail, unperforated

1201015

<https://www.phoenixcontact.com/ae/products/1201015>



DIN rail, unperforated, acc. to EN 60715, material: Steel, galvanized, passivated with a thick layer, G profile, color: silver, Pack of 10 (20 m)

TB 10 EI YE - Feed-through terminal block

3000864

<https://www.phoenixcontact.com/ae/products/3000864>



PS-MT - Test plugs

0311647

<https://www.phoenixcontact.com/ae/products/0311647>



Test plugs, number of positions: 1, color: silver

PS-IH WH - Insulating sleeve

0311566

<https://www.phoenixcontact.com/ae/products/0311566>



Insulating sleeve, number of positions: 1, color: white

TB 10 EI YE - Feed-through terminal block

3000864

<https://www.phoenixcontact.com/ae/products/3000864>



PS-IH RD - Insulating sleeve

0311579

<https://www.phoenixcontact.com/ae/products/0311579>



Insulating sleeve, number of positions: 1, color: red

PS-IH BU - Insulating sleeve

0311582

<https://www.phoenixcontact.com/ae/products/0311582>



Insulating sleeve, number of positions: 1, color: blue

TB 10 EI YE - Feed-through terminal block

3000864

<https://www.phoenixcontact.com/ae/products/3000864>



PS-IH YE - Insulating sleeve

0311595

<https://www.phoenixcontact.com/ae/products/0311595>



Insulating sleeve, number of positions: 1, color: yellow

PS-IH GN - Insulating sleeve

0311605

<https://www.phoenixcontact.com/ae/products/0311605>



Insulating sleeve, number of positions: 1, color: green

TB 10 EI YE - Feed-through terminal block

3000864

<https://www.phoenixcontact.com/ae/products/3000864>



PS-IH GY - Insulating sleeve

0311621

<https://www.phoenixcontact.com/ae/products/0311621>



Insulating sleeve, number of positions: 1, color: gray

PS-IH BK - Insulating sleeve

0311634

<https://www.phoenixcontact.com/ae/products/0311634>



Insulating sleeve, number of positions: 1, color: black

TB 10 EI YE - Feed-through terminal block

3000864

<https://www.phoenixcontact.com/ae/products/3000864>



PS-IH VT - Insulating sleeve

0311618

<https://www.phoenixcontact.com/ae/products/0311618>



Insulating sleeve, number of positions: 1, color: violet

Phoenix Contact 2023 © - all rights reserved

<https://www.phoenixcontact.com>

PHOENIX CONTACT Middle East FZ LLC
1201N-1206N, Dubai Science Park Towers – North
P.O. Box 345002, Dubai, United Arab Emirates
(+971) 4 437-0324
info-me@phoenixcontact.com