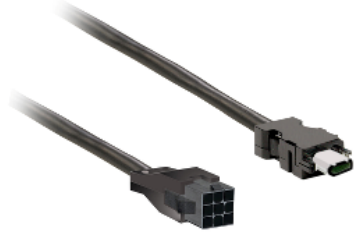


Product data sheet

Specifications



power cable 3m shielded 4x
0,82mm², BCH2 brake leads
connection

VW3M5D1FR30

Main

Range of product	Lexium 28
Product or component type	Power cable
Accessory / separate part type	Preassembled power cordset
Accessory / separate part category	Connection accessory
Product compatibility	Servo motor BCH2 at 50 W (40 mm) (with brake) Servo motor BCH2 at 100 W (40 mm) (with brake) Servo motor BCH2 at 200 W (60 mm) (with brake) Servo motor BCH2 at 400 W (60 mm) (with brake) Servo motor BCH2 at 400 W (80 mm) (with brake) Servo motor BCH2 at 750 W (80 mm) (with brake)
Accessory / separate part destination	Between servo motor and servo drive
Range compatibility	Lexium 28
Cable length	3 m

Complementary

Electrical connection	Free end for servo drive side Connector - Molex 6-pin for servo motor side
AWG gauge	6 x AWG 18
Net weight	0.3 kg

Packing Units

Unit Type of Package 1	PCE
Number of Units in Package 1	1
Package 1 Height	4.6 cm
Package 1 Width	28.7 cm
Package 1 Length	31.7 cm
Package 1 Weight	515 g
Unit Type of Package 2	S03
Number of Units in Package 2	10
Package 2 Height	30 cm
Package 2 Width	30 cm
Package 2 Length	40 cm

Package 2 Weight 5.642 kg

Offer Sustainability

REACH Regulation	REACH Declaration
REACH free of SVHC	Yes
EU RoHS Directive	Pro-active compliance (Product out of EU RoHS legal scope) EU RoHS Declaration
Toxic heavy metal free	Yes
Mercury free	Yes
China RoHS Regulation	China RoHS declaration Pro-active China RoHS declaration (out of China RoHS legal scope)
RoHS exemption information	Yes
PVC free	Yes
California proposition 65	WARNING: This product can expose you to chemicals including: Lead and lead compounds, which is known to the State of California to cause cancer and birth defects or other reproductive harm. For more information go to www.P65Warnings.ca.gov

Recommended replacement(s)