

# REL-IR4/LDP- 24DC/4X21 - Single relay



2903677

<https://www.phoenixcontact.com/in/products/2903677>

Please be informed that the data shown in this PDF document is generated from our Online Catalog. Please find the complete data in the user documentation. Our General Terms of Use for Downloads are valid.



Plug-in industrial relay with power contacts, 4 changeover contacts, test button, status LED, freewheeling diode, mechanical switching position indicator, polarity: A1+, A2-, input voltage: 24 V DC

## Commercial Data

Item number	2903677
Packing unit	10 pc
Minimum order quantity	10 pc
Sales Key	CK6
Product Key	CK6193
Catalog Page	Page 300 (C-5-2019)
GTIN	4046356758901
Weight per Piece (including packing)	35.7 g
Weight per Piece (excluding packing)	34.4 g
Customs tariff number	85364190
Country of origin	PL

# REL-IR4/LDP- 24DC/4X21 - Single relay



2903677

<https://www.phoenixcontact.com/in/products/2903677>

## Technical Data

### Product properties

Product type	Single relay
Set comprises	2903308 RIF-2-RPT-LDP-24DC/4X21 2903320 RIF-2-RSC-LDP-24DC/4X21
Operating mode	100% operating factor
Mechanical service life	approx. $2 \times 10^7$ cycles

### Insulation characteristics

Insulation	Basic insulation
------------	------------------

### Insulation characteristics

Insulation	Basic insulation
Overvoltage category	II
Pollution degree	2

### Electrical properties

Service life electrical	see diagram
Maximum power dissipation for nominal condition	1.01 W
Test voltage (Winding/contact)	2.5 kV <sub>rms</sub> (50 Hz, 1 min., winding/contact)
Test voltage (Changeover contact/changeover contact)	2 kV <sub>rms</sub> (50 Hz, 1 min., changeover contact/changeover contact)
Rated insulation voltage	250 V AC
Rated surge voltage	2.5 kV

### Input data

#### Coil side

Nominal input voltage $U_N$	24 V DC
Input voltage range	18.7 V DC ... 46.8 V DC (20 °C)
Typical input current at $U_N$	42 mA
Typical response time	13 ms
Typical release time	14 ms
Protective circuit	Freewheeling diode
Status display	Yellow LED

### Output data

#### Switching

Contact type	4 changeover contacts
Type of switch contact	Single contact
Drive and function	monostable
Drive (polarity)	polarized
Contact material	AgNi
Maximum switching voltage	250 V AC/DC

# REL-IR4/LDP- 24DC/4X21 - Single relay



2903677

<https://www.phoenixcontact.com/in/products/2903677>

Minimum switching voltage	5 V (At 24 mA)
Limiting continuous current	6 A
Maximum inrush current	16 A (20 ms, N/O contacts)
Min. switching current	5 mA (at 24 V)
Interrupting rating (ohmic load) max.	144 W (at 24 V DC) 124 W (at 48 V DC) 108 W (at 60 V DC) 52 W (at 110 V DC) 48 W (at 220 V DC) 1500 VA (for 250 V AC)
Switching capacity min.	0.12 W
Switching capacity	2 A (at 24 V, DC13) 0.22 A (at 120 V, DC13) 0.11 A (at 250 V, DC13) 1.5 A (at 24 V, AC15) 1.5 A (at 120 V, AC15) 1 A (at 240 V, AC15)
Motor load according to UL 508	1/3 HP, 240 V AC

## Connection data

Connection method	Plug-in connection
-------------------	--------------------

## Dimensions

Width	21.2 mm
Height	27.5 mm
Depth	35.6 mm

## Environmental and real-life conditions

### Ambient conditions

Degree of protection	RT I
Ambient temperature (operation)	-40 °C ... 70 °C
Ambient temperature (storage/transport)	-40 °C ... 85 °C

## Approvals

### Corrosive gas test

Identification	ISA-S71.04. G3 Harsh Group EN 60068-2-60
----------------	---

## Standards and regulations

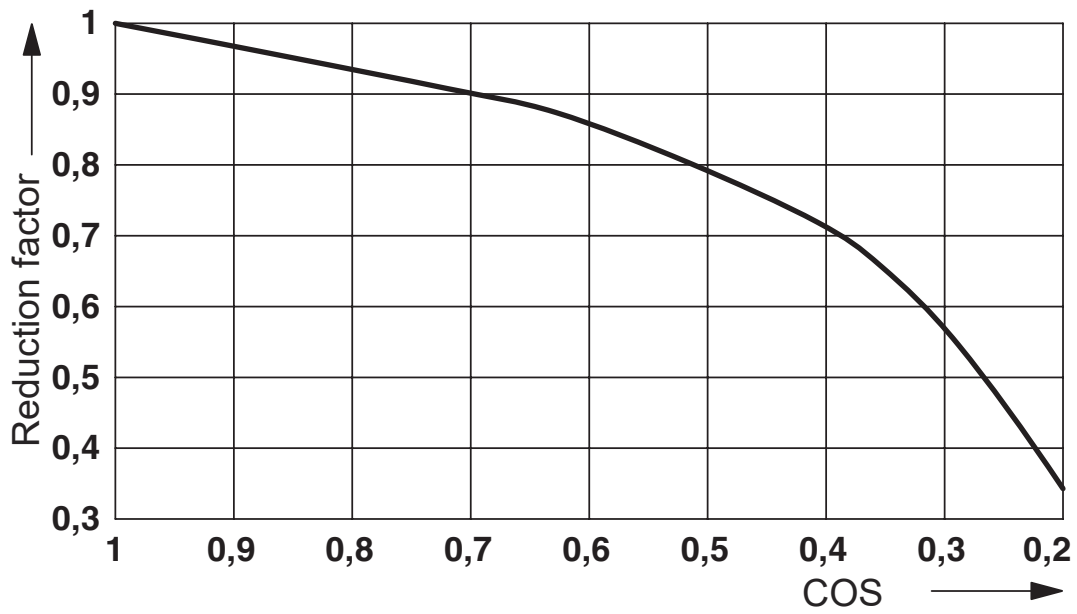
Standards/regulations	IEC 60664 IEC 61810
-----------------------	------------------------

## Mounting

Mounting position	any
-------------------	-----

Drawings

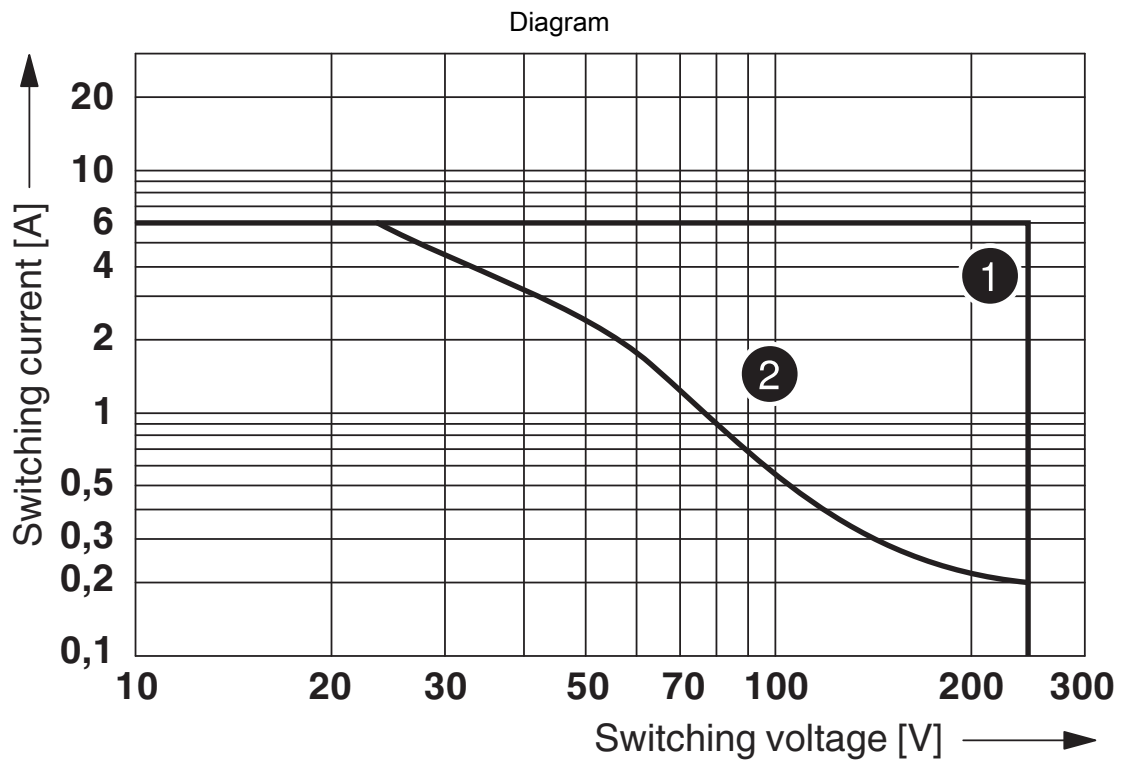
Diagram



Service life reduction factor

2903677

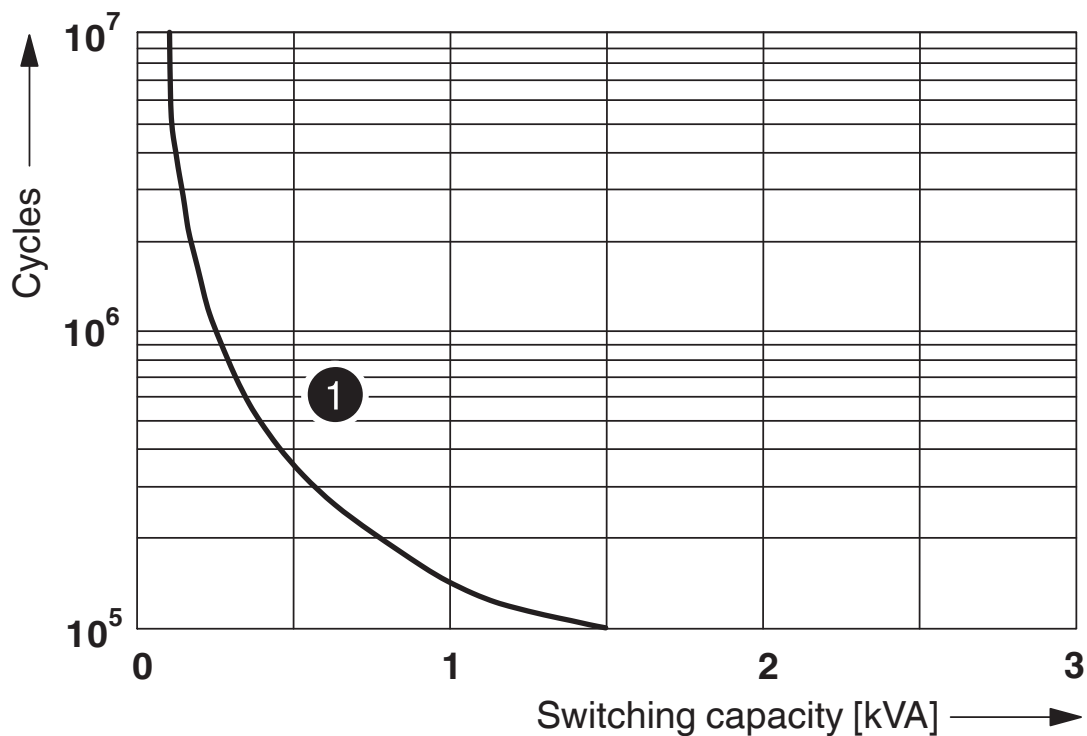
<https://www.phoenixcontact.com/in/products/2903677>



- ① AC, ohmic load
- ② DC, ohmic load

Interrupting rating

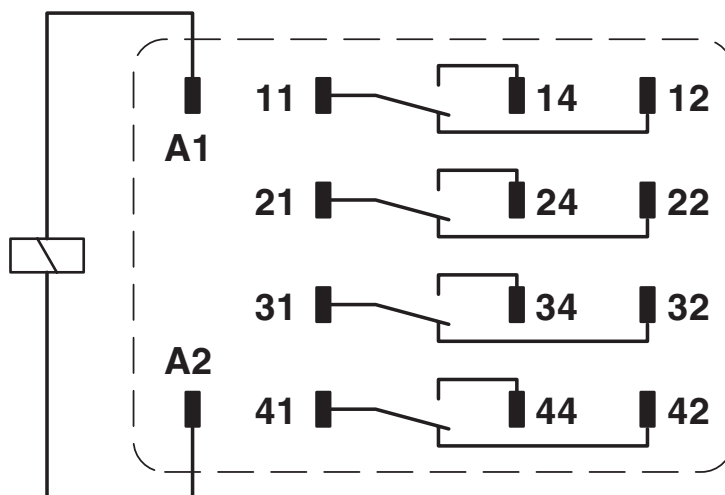
Diagram



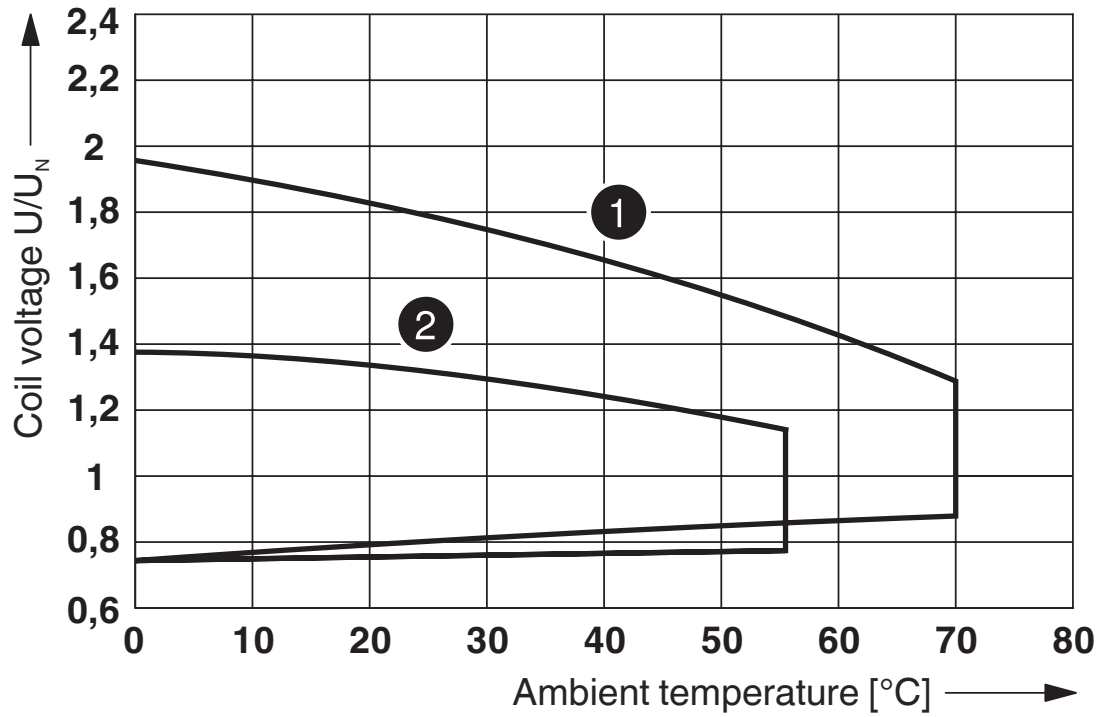
① 250 V AC, Ohmic load

Electrical service life

Circuit diagram



Diagram



- ① DC coils
- ② AC coils

Operating voltage range

# REL-IR4/LDP- 24DC/4X21 - Single relay




2903677


<https://www.phoenixcontact.com/in/products/2903677>

## Approvals

 **CSA**  
Approval ID: 256725

 **cUL Recognized**  
Approval ID: FILE E 172140

 **UL Recognized**  
Approval ID: FILE E 172140

 **EAC**  
Approval ID: TR\_TS\_D\_00573\_c

 **VDE Zeichengenehmigung**  
Approval ID: 40040427



# REL-IR4/LDP- 24DC/4X21 - Single relay



2903677

<https://www.phoenixcontact.com/in/products/2903677>

## Classifications

### ECLASS

ECLASS-11.0	27371601
ECLASS-12.0	27371601
ECLASS-13.0	27371601

### ETIM

ETIM 8.0	EC001437
----------	----------

### UNSPSC

UNSPSC 21.0	39122300
-------------	----------

# REL-IR4/LDP- 24DC/4X21 - Single relay



2903677

<https://www.phoenixcontact.com/in/products/2903677>

## Environmental Product Compliance

China RoHS	Environmentally friendly use period: unlimited = EFUP-e
	No hazardous substances above threshold values

# REL-IR4/LDP- 24DC/4X21 - Single relay



2903677

<https://www.phoenixcontact.com/in/products/2903677>

## Accessories

### RIF-2-BPT/4X21 - Relay base

2900934

<https://www.phoenixcontact.com/in/products/2900934>



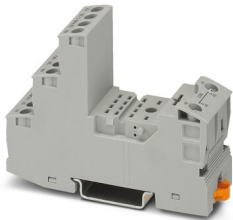
Relay base RIF-2..., for industrial relay with 2 or 4 changeover contacts, Push-in connection, plug-in option for input/interference suppression modules, for mounting on NS 35/7,5

---

### RIF-2-BSC/4X21 - Relay base

2900932

<https://www.phoenixcontact.com/in/products/2900932>



RIF-2... relay base, for industrial relay with 2 or 4 changeover contacts, screw connection, plug-in option for input/interference suppression modules, for mounting on NS 35/7,5

---

Phoenix Contact 2023 © - all rights reserved

<https://www.phoenixcontact.com>

PHOENIX CONTACT (I) Pvt. Ltd.

A-58/2, Okhla Industrial Area, Phase - II, New Delhi-110 020

+91.1275.71420

[info@phoenixcontact.co.in](mailto:info@phoenixcontact.co.in)