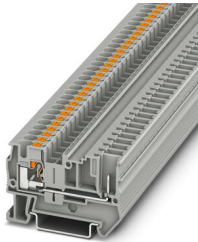


PT 4/1P - Feed-through terminal block

3211937

<https://www.phoenixcontact.com/in/products/3211937>

Please be informed that the data shown in this PDF document is generated from our Online Catalog. Please find the complete data in the user documentation. Our General Terms of Use for Downloads are valid.



Feed-through terminal block, Current and voltage are determined by the plug used., nom. voltage: 800 V, nominal current: 32 A, number of connections: 2, connection method: Push-in / plug connection, Rated cross section: 4 mm², cross section: 0.2 mm² - 6 mm², mounting type: NS 35/7,5, NS 35/15, color: gray

Your advantages

- In addition to the testing facility in the double function shaft, all terminal blocks provide an additional test connection
- The Push-in connection terminal blocks are characterized by the system features of the CLIPLINE complete system and by easy and tool-free wiring of conductors with ferrules or solid conductors
- The compact design and front connection enable wiring in a confined space
- Tested for railway applications

Commercial Data

Item number	3211937
Packing unit	50 pc
Minimum order quantity	50 pc
Sales Key	BE2
Product Key	BE2241
Catalog Page	Page 325 (C-1-2019)
GTIN	4046356482882
Weight per Piece (including packing)	8.4 g
Weight per Piece (excluding packing)	7.862 g
Customs tariff number	85369010
Country of origin	PL

PT 4/1P - Feed-through terminal block



3211937

<https://www.phoenixcontact.com/in/products/3211937>

Technical Data

Notes

General	Current and voltage are determined by the plug used.
---------	--

Product properties

Product type	Plug-in terminal block
Area of application	Railway industry
	Machine building
	Plant engineering
Number of connections	2
Number of rows	1
Potentials	1

Insulation characteristics

Overvoltage category	III
Degree of pollution	3

Electrical properties

Rated surge voltage	8 kV
Maximum power dissipation for nominal condition	1.02 W

Connection data

Number of connections per level	2
Nominal cross section	4 mm ²
Stripping length	10 mm ... 12 mm
Internal cylindrical gage	A4
Connection in acc. with standard	IEC 61984
Conductor cross section rigid	0.2 mm ² ... 6 mm ²
Cross section AWG	24 ... 10 (converted acc. to IEC)
Conductor cross section flexible	0.2 mm ² ... 6 mm ²
Conductor cross section, flexible [AWG]	24 ... 10 (converted acc. to IEC)
Conductor cross-section flexible (ferrule without plastic sleeve)	0.25 mm ² ... 4 mm ²
Flexible conductor cross section (ferrule with plastic sleeve)	0.25 mm ² ... 4 mm ²
2 conductors with the same cross section, flexible, with TWIN ferrule with plastic sleeve	0.5 mm ² ... 1 mm ²
Nominal current	32 A
Maximum load current	32 A (with 6 mm ² conductor cross section, rigid)
Nominal voltage	800 V
Nominal cross section	4 mm ²

Connection cross sections directly pluggable

Conductor cross section rigid	0.5 mm ² ... 6 mm ²
Conductor cross-section flexible (ferrule without plastic sleeve)	0.5 mm ² ... 4 mm ²
Flexible conductor cross section (ferrule with plastic sleeve)	0.5 mm ² ... 4 mm ²

PT 4/1P - Feed-through terminal block



3211937

<https://www.phoenixcontact.com/in/products/3211937>

Dimensions

Width	6.2 mm
End cover width	2.2 mm
Height NS 35/15	44 mm
Height NS 35/7,5	36.5 mm
Height	1.437 "
Length	56 mm

Material specifications

Color	gray
Flammability rating according to UL 94	V0
Insulating material group	I
Insulating material	PA
Static insulating material application in cold	-60 °C
Temperature index of insulation material (DIN EN 60216-1 (VDE 0304-21))	130 °C
Relative insulation material temperature index (Elec., UL 746 B)	130 °C
Fire protection for rail vehicles (DIN EN 45545-2) R22	HL 1 - HL 3
Fire protection for rail vehicles (DIN EN 45545-2) R23	HL 1 - HL 3
Fire protection for rail vehicles (DIN EN 45545-2) R24	HL 1 - HL 3
Fire protection for rail vehicles (DIN EN 45545-2) R26	HL 1 - HL 3
Calorimetric heat release NFPA 130 (ASTM E 1354)	28 MJ/kg
Surface flammability NFPA 130 (ASTM E 162)	passed
Specific optical density of smoke NFPA 130 (ASTM E 662)	passed
Smoke gas toxicity NFPA 130 (SMP 800C)	passed

Electrical tests

Surge voltage test

Test voltage setpoint	9.8 kV
Result	Test passed
Short-time withstand current 1.5 mm ²	0.18 kA
Result	Test passed

Power-frequency withstand voltage

Test voltage setpoint	2 kV
Result	Test passed

Mechanical properties

Mechanical data

Open side panel	Yes
-----------------	-----

Mechanical tests

Attachment on the carrier

PT 4/1P - Feed-through terminal block



3211937

<https://www.phoenixcontact.com/in/products/3211937>

DIN rail/fixing support	NS 35
Test force setpoint	1 N
Result	Test passed

Test for conductor damage and slackening

Rotation speed	10 rpm
Revolutions	135
Conductor cross section/weight	0.2 mm ² / 0.2 kg
	2.5 mm ² / 0.7 kg
	4 mm ² / 0.9 kg
	6 mm ² / 1.4 kg
Result	Test passed

Environmental and real-life conditions

Needle-flame test

Time of exposure	30 s
Result	Test passed

Oscillation/broadband noise

Specification	DIN EN 50155 (VDE 0115-200):2018-05
Spectrum	Service life test category 1, class B, body mounted
Frequency	$f_1 = 5 \text{ Hz}$ to $f_2 = 150 \text{ Hz}$
ASD level	0.964 (m/s ²)/Hz
Acceleration	0.58g
Test duration per axis	5 h
Test directions	X-, Y- and Z-axis
Result	Test passed

Shocks

Specification	DIN EN 50155 (VDE 0115-200):2018-05
Pulse shape	Half-sine
Acceleration	5g
Shock duration	30 ms
Number of shocks per direction	3
Test directions	X-, Y- and Z-axis (pos. and neg.)
Result	Test passed

Ambient conditions

Ambient temperature (operation)	-60 °C (max. operating temperature see derating curve)
Ambient temperature (storage/transport)	-25 °C ... 60 °C (for a short time, not exceeding 24 h, -60 °C to +70 °C)
Ambient temperature (assembly)	-5 °C ... 70 °C
Ambient temperature (actuation)	-5 °C ... 70 °C
Permissible humidity (storage/transport)	30 % ... 70 %

Standards and regulations

PT 4/1P - Feed-through terminal block



3211937

<https://www.phoenixcontact.com/in/products/3211937>

Connection in acc. with standard	IEC 61984
----------------------------------	-----------

Mounting

Mounting type	NS 35/7,5
	NS 35/15

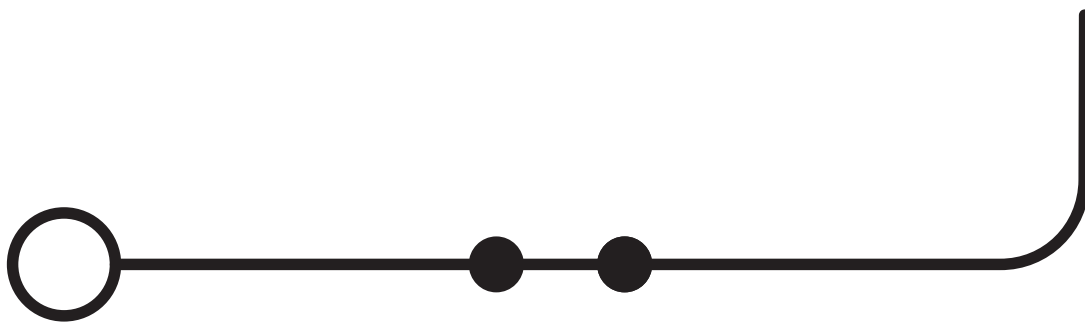
PT 4/1P - Feed-through terminal block

3211937

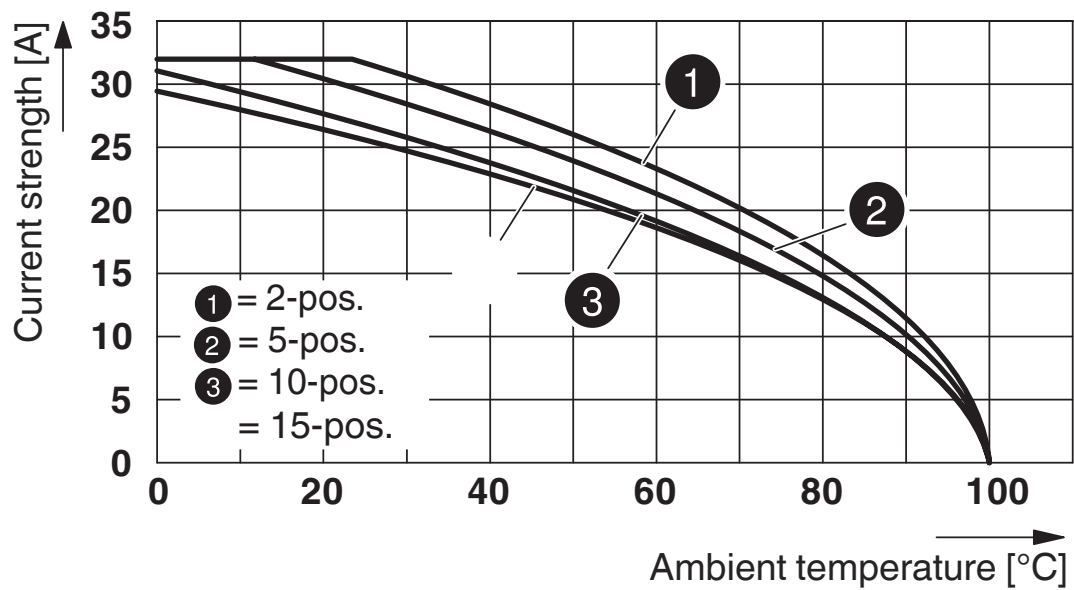
<https://www.phoenixcontact.com/in/products/3211937>

Drawings

Circuit diagram



Diagram




PT 4/1P - Feed-through terminal block




3211937


<https://www.phoenixcontact.com/in/products/3211937>

Approvals

 CSA Approval ID: 13631				
	Nominal Voltage U_N	Nominal Current I_N	Cross Section AWG	Cross Section mm^2
	600 V	28 A	24 - 10	-
	600 V	28 A	24 - 10	-

 EAC Approval ID: RU C-DE.BL08.B.00644				
---	--	--	--	--

 cULus Recognized Approval ID: E60425				
	Nominal Voltage U_N	Nominal Current I_N	Cross Section AWG	Cross Section mm^2
	600 V	28 A	24 - 10	-

 BV Approval ID: 39979/B0 BV				
---	--	--	--	--

PT 4/1P - Feed-through terminal block



3211937

<https://www.phoenixcontact.com/in/products/3211937>

Classifications

ECLASS

ECLASS-11.0

27141120

ETIM

ETIM 8.0

EC000897

UNSPSC

UNSPSC 21.0

39121400

PT 4/1P - Feed-through terminal block



3211937

<https://www.phoenixcontact.com/in/products/3211937>

Environmental Product Compliance


China RoHS	Environmentally friendly use period: unlimited = EFUP-e No hazardous substances above threshold values
------------	---

PT 4/1P - Feed-through terminal block

3211937

<https://www.phoenixcontact.com/in/products/3211937>

Accessories

 Note: Applying some accessories below might limit this product.


FBS 2-6 - Plug-in bridge

3030336

<https://www.phoenixcontact.com/in/products/3030336>



Plug-in bridge, pitch: 6.2 mm, number of positions: 2, color: red

 Max. current carrying capacity: 32 A

FBS 3-6 - Plug-in bridge

3030242

<https://www.phoenixcontact.com/in/products/3030242>



Plug-in bridge, pitch: 6.2 mm, number of positions: 3, color: red

 Max. current carrying capacity: 32 A

PT 4/1P - Feed-through terminal block

3211937

<https://www.phoenixcontact.com/in/products/3211937>




FBS 4-6 - Plug-in bridge

3030255

<https://www.phoenixcontact.com/in/products/3030255>



Plug-in bridge, pitch: 6.2 mm, number of positions: 4, color: red

 Max. current carrying capacity: 32 A

FBS 5-6 - Plug-in bridge

3030349

<https://www.phoenixcontact.com/in/products/3030349>



Plug-in bridge, pitch: 6.2 mm, number of positions: 5, color: red

 Max. current carrying capacity: 32 A

PT 4/1P - Feed-through terminal block

3211937

<https://www.phoenixcontact.com/in/products/3211937>



FBS 6-6 - Plug-in bridge

1008238

<https://www.phoenixcontact.com/in/products/1008238>



Plug-in bridge, One side not fully isolated, pitch: 6.2 mm, number of positions: 6, color: red

 Max. current carrying capacity: 32 A

FBS 10-6 - Plug-in bridge

3030271

<https://www.phoenixcontact.com/in/products/3030271>



Plug-in bridge, pitch: 6.2 mm, number of positions: 10, color: red

 Max. current carrying capacity: 32 A

PT 4/1P - Feed-through terminal block

3211937

<https://www.phoenixcontact.com/in/products/3211937>



FBS 20-6 - Plug-in bridge

3030365

<https://www.phoenixcontact.com/in/products/3030365>



Plug-in bridge, pitch: 6.2 mm, number of positions: 20, color: red

 Max. current carrying capacity: 32 A


FBSR 2-6 - Plug-in bridge

3033715

<https://www.phoenixcontact.com/in/products/3033715>



Plug-in bridge, pitch: 6.2 mm, number of positions: 2, color: red

 Max. current carrying capacity: 22 A

PT 4/1P - Feed-through terminal block

3211937

<https://www.phoenixcontact.com/in/products/3211937>



FBSR 3-6 - Plug-in bridge

3001594

<https://www.phoenixcontact.com/in/products/3001594>



Plug-in bridge, pitch: 6.2 mm, number of positions: 3, color: red

 Max. current carrying capacity: 22 A


FBSR 4-6 - Plug-in bridge

3001595

<https://www.phoenixcontact.com/in/products/3001595>



Plug-in bridge, pitch: 6.2 mm, number of positions: 4, color: red

 Max. current carrying capacity: 22 A

PT 4/1P - Feed-through terminal block

3211937

<https://www.phoenixcontact.com/in/products/3211937>



FBSR 5-6 - Plug-in bridge

3001596

<https://www.phoenixcontact.com/in/products/3001596>



Plug-in bridge, pitch: 6.2 mm, number of positions: 5, color: red

 Max. current carrying capacity: 22 A


FBSR 10-6 - Plug-in bridge

3033716

<https://www.phoenixcontact.com/in/products/3033716>



Plug-in bridge, pitch: 6.2 mm, number of positions: 10, color: red

 Max. current carrying capacity: 22 A

PT 4/1P - Feed-through terminal block

3211937

<https://www.phoenixcontact.com/in/products/3211937>




FBSRH 2-6 - Short-circuit connector

3033812

<https://www.phoenixcontact.com/in/products/3033812>



Short-circuit connector, pitch: 6.2 mm, number of positions: 2, color: red

 Max. current carrying capacity: 22 A


FBS 2-6 BU - Plug-in bridge

3036932

<https://www.phoenixcontact.com/in/products/3036932>



Plug-in bridge, pitch: 6.2 mm, number of positions: 2, color: blue

 Max. current carrying capacity: 32 A

PT 4/1P - Feed-through terminal block

3211937

<https://www.phoenixcontact.com/in/products/3211937>



FBS 3-6 BU - Plug-in bridge

3036945

<https://www.phoenixcontact.com/in/products/3036945>



Plug-in bridge, pitch: 6.2 mm, number of positions: 3, color: blue

 Max. current carrying capacity: 32 A

FBS 4-6 BU - Plug-in bridge

3036958

<https://www.phoenixcontact.com/in/products/3036958>



Plug-in bridge, pitch: 6.2 mm, number of positions: 4, color: blue

 Max. current carrying capacity: 32 A

PT 4/1P - Feed-through terminal block

3211937

<https://www.phoenixcontact.com/in/products/3211937>



FBS 5-6 BU - Plug-in bridge

3036961

<https://www.phoenixcontact.com/in/products/3036961>



Plug-in bridge, pitch: 6.2 mm, number of positions: 5, color: blue

 Max. current carrying capacity: 32 A

FBS 10-6 BU - Plug-in bridge

3032198

<https://www.phoenixcontact.com/in/products/3032198>



Plug-in bridge, pitch: 6.2 mm, number of positions: 10, color: blue

 Max. current carrying capacity: 32 A

PT 4/1P - Feed-through terminal block

3211937

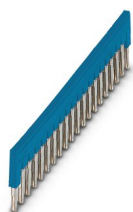
<https://www.phoenixcontact.com/in/products/3211937>



FBS 20-6 BU - Plug-in bridge

3032208

<https://www.phoenixcontact.com/in/products/3032208>



Plug-in bridge, pitch: 6.2 mm, number of positions: 20, color: blue

 Max. current carrying capacity: 32 A

FBS 50-6 BU - Plug-in bridge

3032211

<https://www.phoenixcontact.com/in/products/3032211>



Plug-in bridge, pitch: 6.2 mm, number of positions: 50, color: blue

 Max. current carrying capacity: 32 A

PT 4/1P - Feed-through terminal block

3211937

<https://www.phoenixcontact.com/in/products/3211937>




RB ST (2,5/4)-1,5/S - Reducing bridge

3214356

<https://www.phoenixcontact.com/in/products/3214356>



Reducing bridge, pitch: 6.7 mm, number of positions: 2, length: 23 mm, color: red

 Max. current carrying capacity: 24 A


RB ST 6-(2,5/4) - Reducing bridge

3030860

<https://www.phoenixcontact.com/in/products/3030860>



Reducing bridge, pitch: 9 mm, number of positions: 2, length: 30 mm, color: red

 Max. current carrying capacity: 35 A

PT 4/1P - Feed-through terminal block

3211937

<https://www.phoenixcontact.com/in/products/3211937>




RB ST 16-(2,5/4) - Reducing bridge

3030886

<https://www.phoenixcontact.com/in/products/3030886>



Reducing bridge, pitch: 11 mm, number of positions: 2, length: 37 mm, color: red

 Max. current carrying capacity: 35 A

RB ST 35-(2,5/4) - Reducing bridge

3030899

<https://www.phoenixcontact.com/in/products/3030899>



Reducing bridge, pitch: 11 mm, number of positions: 2, color: red

 Max. current carrying capacity: 35 A

PT 4/1P - Feed-through terminal block

3211937

<https://www.phoenixcontact.com/in/products/3211937>




RB ST (2,5/4)-1,5 - Reducing bridge

3038943

<https://www.phoenixcontact.com/in/products/3038943>



Reducing bridge, pitch: 7.1 mm, number of positions: 2, length: 23 mm, color: red

 Max. current carrying capacity: 24 A

RB UT 6-ST(2,5/4) - Reducing bridge

3047264

<https://www.phoenixcontact.com/in/products/3047264>



Reducing bridge, pitch: 9.5 mm, number of positions: 2, length: 33 mm, color: red

 Max. current carrying capacity: 35 A

PT 4/1P - Feed-through terminal block

3211937

<https://www.phoenixcontact.com/in/products/3211937>




RB UT 35-ST(2,5/4) - Reducing bridge

3047280

<https://www.phoenixcontact.com/in/products/3047280>



Reducing bridge, pitch: 10.8 mm, number of positions: 2, color: red

 Max. current carrying capacity: 40 A


RB UT 10-ST(2,5/4) - Reducing bridge

3047086

<https://www.phoenixcontact.com/in/products/3047086>



Reducing bridge, pitch: 10.2 mm, number of positions: 2, length: 33 mm, color: red

 Max. current carrying capacity: 40 A

PT 4/1P - Feed-through terminal block

3211937

<https://www.phoenixcontact.com/in/products/3211937>




RB UT 16-ST(2,5/4) - Reducing bridge

3047099

<https://www.phoenixcontact.com/in/products/3047099>



Reducing bridge, pitch: 11 mm, number of positions: 2, length: 41 mm, color: red

 Max. current carrying capacity: 40 A

D-ST 4 - End cover

3030420

<https://www.phoenixcontact.com/in/products/3030420>

End cover, length: 55.9 mm, width: 2.2 mm, height: 29 mm, color: gray



PT 4/1P - Feed-through terminal block

3211937

<https://www.phoenixcontact.com/in/products/3211937>



ATP-ST 4 - Partition plate

3030721

<https://www.phoenixcontact.com/in/products/3030721>

Partition plate, length: 59.8 mm, width: 2 mm, height: 39 mm, color: gray



SZF 1-0,6X3,5 - Screwdriver

1204517

<https://www.phoenixcontact.com/in/products/1204517>

Actuation tool, for ST terminal blocks, also suitable for use as a bladed screwdriver, size: 0.6 x 3.5 x 100 mm, 2-component grip, with non-slip grip



PT 4/1P - Feed-through terminal block

3211937

<https://www.phoenixcontact.com/in/products/3211937>



PT-IL - Mounting material

3208090

<https://www.phoenixcontact.com/in/products/3208090>

Operating decal for the push-in Technology



ST-BW - Actuation tool

1207608

<https://www.phoenixcontact.com/in/products/1207608>

Actuation tool, for all 2.5 mm² - 4.0 mm² spring-cages



PT 4/1P - Feed-through terminal block

3211937

<https://www.phoenixcontact.com/in/products/3211937>

WS PT 4 - Warning label

1029563

<https://www.phoenixcontact.com/in/products/1029563>

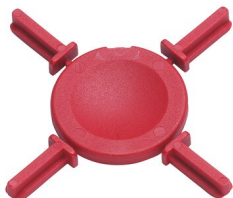


Warning label, yellow/black, labeled: Lightning flash, mounting type: plug in, for terminal block width: 6.2 mm

PC - Coding star

3040588

<https://www.phoenixcontact.com/in/products/3040588>



Coding star, length: 3 mm, width: 3 mm, height: 6 mm, color: red

PT 4/1P - Feed-through terminal block

3211937

<https://www.phoenixcontact.com/in/products/3211937>

CP 4/2 - Connector housing

1066559

<https://www.phoenixcontact.com/in/products/1066559>



Connector housing, nominal current: 10 A, pitch: 6.2 mm, length: 14.95 mm, width: 11.3 mm, height: 32.4 mm, number of positions: 2, color: gray

CP 4/3 - Connector housing

1066560

<https://www.phoenixcontact.com/in/products/1066560>



Connector housing, nominal current: 10 A, pitch: 6.2 mm, length: 14.95 mm, width: 17.5 mm, height: 32.4 mm, number of positions: 3, color: gray

PT 4/1P - Feed-through terminal block

3211937

<https://www.phoenixcontact.com/in/products/3211937>

CP 4/4 - Connector housing

1066561

<https://www.phoenixcontact.com/in/products/1066561>



Connector housing, nominal current: 10 A, pitch: 6.2 mm, length: 14.95 mm, width: 23.5 mm, height: 32.4 mm, number of positions: 4, color: gray

CP 4/5 - Connector housing

1066562

<https://www.phoenixcontact.com/in/products/1066562>



Connector housing, nominal current: 10 A, pitch: 6.2 mm, length: 14.95 mm, width: 29.8 mm, height: 32.4 mm, number of positions: 5, color: gray

PT 4/1P - Feed-through terminal block

3211937

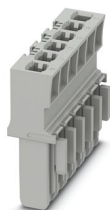
<https://www.phoenixcontact.com/in/products/3211937>



CP 4/6 - Connector housing

1066563

<https://www.phoenixcontact.com/in/products/1066563>



Connector housing, nominal current: 10 A, pitch: 6.2 mm, length: 14.95 mm, width: 35.9 mm, height: 32.4 mm, number of positions: 6, color: gray

CP 4/8 - Connector housing

1066564

<https://www.phoenixcontact.com/in/products/1066564>



Connector housing, nominal current: 10 A, pitch: 6.2 mm, length: 14.95 mm, width: 48.2 mm, height: 32.4 mm, number of positions: 8, color: gray

PT 4/1P - Feed-through terminal block

3211937

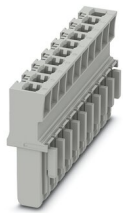
<https://www.phoenixcontact.com/in/products/3211937>



CP 4/10 - Connector housing

1066565

<https://www.phoenixcontact.com/in/products/1066565>



Connector housing, nominal current: 10 A, pitch: 6.2 mm, length: 14.95 mm, width: 60.5 mm, height: 32.4 mm, number of positions: 10, color: gray

NS 35/ 7,5 PERF 2000MM - DIN rail perforated

0801733

<https://www.phoenixcontact.com/in/products/0801733>



DIN rail perforated, acc. to EN 60715, material: Steel, galvanized, passivated with a thick layer, Standard profile, color: silver, Pack of 25 (50 m)

PT 4/1P - Feed-through terminal block

3211937

<https://www.phoenixcontact.com/in/products/3211937>



NS 35/ 7,5 UNPERF 2000MM - DIN rail, unperforated

0801681

<https://www.phoenixcontact.com/in/products/0801681>



DIN rail, unperforated, acc. to EN 60715, material: Steel, galvanized, passivated with a thick layer, Standard profile, color: silver, Pack of 25 (50 m)

NS 35/ 7,5 WH PERF 2000MM - DIN rail perforated

1204119

<https://www.phoenixcontact.com/in/products/1204119>



DIN rail perforated, acc. to EN 60715, material: Steel, Galvanized, white passivated, Standard profile, color: silver, Pack of 25 (50 m)

PT 4/1P - Feed-through terminal block

3211937

<https://www.phoenixcontact.com/in/products/3211937>



NS 35/ 7,5 WH UNPERF 2000MM-VPE 10 - DIN rail, unperforated

1204122

<https://www.phoenixcontact.com/in/products/1204122>



DIN rail, unperforated, acc. to EN 60715, material: Steel, Galvanized, white passivated, Standard profile, color: silver, Pack of 10 (20 m)

NS 35/ 7,5 AL UNPERF 2000MM - DIN rail, unperforated

0801704

<https://www.phoenixcontact.com/in/products/0801704>



DIN rail, unperforated, acc. to EN 60715, material: Aluminum, uncoated, Standard profile, color: silver, Pack of 25 (50 m)

PT 4/1P - Feed-through terminal block

3211937

<https://www.phoenixcontact.com/in/products/3211937>



NS 35/ 7,5 ZN PERF 2000MM - DIN rail perforated

1206421

<https://www.phoenixcontact.com/in/products/1206421>



DIN rail perforated, acc. to EN 60715, material: Steel, galvanized, Standard profile, color: silver, Pack of 25 (50 m)

NS 35/ 7,5 ZN UNPERF 2000MM - DIN rail, unperforated

1206434

<https://www.phoenixcontact.com/in/products/1206434>



DIN rail, unperforated, acc. to EN 60715, material: Steel, galvanized, Standard profile, color: silver, Pack of 25 (50 m)

PT 4/1P - Feed-through terminal block

3211937

<https://www.phoenixcontact.com/in/products/3211937>



NS 35/ 7,5 CU UNPERF 2000MM-VPE 10 - DIN rail, unperforated

0801762

<https://www.phoenixcontact.com/in/products/0801762>



DIN rail, unperforated, acc. to EN 60715, material: Copper, uncoated, Standard profile, color: copper-colored, Pack of 10 (20 m)

NS 35/ 7,5 CAP - End cap

1206560

<https://www.phoenixcontact.com/in/products/1206560>

DIN rail end piece, for DIN rail NS 35/7.5



PT 4/1P - Feed-through terminal block

3211937

<https://www.phoenixcontact.com/in/products/3211937>



NS 35/15 PERF 2000MM - DIN rail perforated

1201730

<https://www.phoenixcontact.com/in/products/1201730>



DIN rail perforated, similar to EN 60715, material: Steel, galvanized, passivated with a thick layer, Standard profile, color: silver, Pack of 25 (50 m)

NS 35/15 UNPERF 2000MM - DIN rail, unperforated

1201714

<https://www.phoenixcontact.com/in/products/1201714>



DIN rail, unperforated, similar to EN 60715, material: Steel, galvanized, passivated with a thick layer, Standard profile, color: silver, Pack of 25 (50 m)

PT 4/1P - Feed-through terminal block

3211937

<https://www.phoenixcontact.com/in/products/3211937>



NS 35/15 WH PERF 2000MM - DIN rail perforated

0806602

<https://www.phoenixcontact.com/in/products/0806602>



DIN rail perforated, similar to EN 60715, material: Steel, Galvanized, white passivated, Standard profile, color: white, Pack of 25 (50 m)

NS 35/15 WH UNPERF 2000MM-VPE 10 - DIN rail, unperforated

1204135

<https://www.phoenixcontact.com/in/products/1204135>



DIN rail, unperforated, similar to EN 60715, material: Steel, Galvanized, white passivated, Standard profile, color: silver, Pack of 10 (20 m)

PT 4/1P - Feed-through terminal block

3211937

<https://www.phoenixcontact.com/in/products/3211937>

NS 35/15 AL UNPERF 2000MM - DIN rail, unperforated

1201756

<https://www.phoenixcontact.com/in/products/1201756>



DIN rail, unperforated, similar to EN 60715, material: Aluminum, uncoated, Standard profile, color: silver

NS 35/15 ZN PERF 2000MM - DIN rail perforated

1206599

<https://www.phoenixcontact.com/in/products/1206599>



DIN rail perforated, similar to EN 60715, material: Steel, galvanized, Standard profile, color: silver, Pack of 25 (50 m)

PT 4/1P - Feed-through terminal block

3211937

<https://www.phoenixcontact.com/in/products/3211937>



NS 35/15 ZN UNPERF 2000MM - DIN rail, unperforated

1206586

<https://www.phoenixcontact.com/in/products/1206586>



DIN rail, unperforated, similar to EN 60715, material: Steel, galvanized, Standard profile, color: silver, Pack of 25 (50 m)

NS 35/15 CU UNPERF 2000MM-VPE 10 - DIN rail, unperforated

1201895

<https://www.phoenixcontact.com/in/products/1201895>



DIN rail, unperforated, similar to EN 60715, material: Copper, uncoated, Standard profile, color: copper-colored, Pack of 10 (20 m)

PT 4/1P - Feed-through terminal block

3211937

<https://www.phoenixcontact.com/in/products/3211937>



NS 35/15 CAP - End cap

1206573

<https://www.phoenixcontact.com/in/products/1206573>

DIN rail end piece, for DIN rail NS 35/15



NS 35/15-2,3 UNPERF 2000MM-VPE 10 - DIN rail, unperforated

1201798

<https://www.phoenixcontact.com/in/products/1201798>



DIN rail, unperforated, acc. to EN 60715, material: Steel, galvanized, passivated with a thick layer, Standard profile 2.3 mm, color: silver, Pack of 10 (20 m)

PT 4/1P - Feed-through terminal block

3211937

<https://www.phoenixcontact.com/in/products/3211937>

ZB 6:UNBEDRUCKT - Zack marker strip

1051003

<https://www.phoenixcontact.com/in/products/1051003>



Zack marker strip, Strip, white, unlabeled, can be labeled with: PLOTMARK, CMS-P1-PLOTTER, mounting type: snapped, for terminal block width: 6.2 mm, lettering field size: 6.15 x 10.5 mm, Number of individual labels: 10

ZB 6 CUS - Zack marker strip

0824992

<https://www.phoenixcontact.com/in/products/0824992>



Zack marker strip, can be ordered: Strip, white, labeled according to customer specifications, mounting type: snap into tall marker groove, for terminal block width: 6.2 mm, lettering field size: 6.15 x 10.5 mm, Number of individual labels: 10

PT 4/1P - Feed-through terminal block

3211937

<https://www.phoenixcontact.com/in/products/3211937>

ZB 6,LGS:FORTL.ZAHLEN - Zack marker strip

1051016

<https://www.phoenixcontact.com/in/products/1051016>

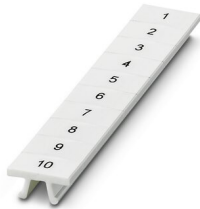


Zack marker strip, Strip, white, labeled, can be labeled with: CMS-P1-PLOTTER, printed horizontally: consecutive numbers 1 ... 10, 11 ... 20, etc. up to 491 ... 500, mounting type: snapped, for terminal block width: 6.2 mm, lettering field size: 6. 15 x 10.5 mm, Number of individual labels: 10

ZB 6,QR:FORTL.ZAHLEN - Zack marker strip

1051029

<https://www.phoenixcontact.com/in/products/1051029>



Zack marker strip, Strip, white, labeled, can be labeled with: CMS-P1-PLOTTER, Printed vertically: consecutive numbers 1 ... 10, 11 ... 20, etc. up to 491 ... 500, mounting type: snapped, for terminal block width: 6.2 mm, lettering field size: 6. 15 x 10.5 mm, Number of individual labels: 10

PT 4/1P - Feed-through terminal block

3211937

<https://www.phoenixcontact.com/in/products/3211937>

ZB 6,LGS:GLEICHE ZAHLEN - Zack marker strip

1051032

<https://www.phoenixcontact.com/in/products/1051032>



Zack marker strip, Strip, white, labeled, can be labeled with: CMS-P1-PLOTTER, printed horizontally: Identical numbers 1 or 2, etc. up to 100, mounting type: snapped, for terminal block width: 6.2 mm, lettering field size: 6.15 x 10.5 mm, Number of individual labels: 10

ZB 6,LGS:L1-N,PE - Marker for terminal blocks

1051414

<https://www.phoenixcontact.com/in/products/1051414>



Marker for terminal blocks, Strip, white, labeled, can be labeled with: CMS-P1-PLOTTER, horizontal: L1, L2, L3, N, PE, L1, L2, L3, N, PE, mounting type: snapped, for terminal block width: 6.2 mm, lettering field size: 6.15 x 10.5 mm, Number of individual labels: 10

PT 4/1P - Feed-through terminal block



3211937

<https://www.phoenixcontact.com/in/products/3211937>

ZB 6,LGS:U-N - Marker for terminal blocks

1051430

<https://www.phoenixcontact.com/in/products/1051430>



Marker for terminal blocks, Strip, white, labeled, can be labeled with: CMS-P1-PLOTTER, printed horizontally: U, V, W, N, GND, U, V, W, N, GND, mounting type: snapped, for terminal block width: 6.2 mm, lettering field size: 6.15 x 10.5 mm, Number of individual labels: 10

UC-TM 6 - Marker for terminal blocks

0818085

<https://www.phoenixcontact.com/in/products/0818085>



Marker for terminal blocks, Sheet, white, unlabeled, can be labeled with: BLUEMARK ID COLOR, BLUEMARK ID, BLUEMARK CLED, PLOTMARK, CMS-P1-PLOTTER, mounting type: snapped, for terminal block width: 6.2 mm, lettering field size: 5.6 x 10.5 mm, Number of individual labels: 80

PT 4/1P - Feed-through terminal block

3211937

<https://www.phoenixcontact.com/in/products/3211937>



UC-TM 6 CUS - Marker for terminal blocks

0824589

<https://www.phoenixcontact.com/in/products/0824589>



Marker for terminal blocks, can be ordered: by sheet, white, labeled according to customer specifications, mounting type: snap into tall marker groove, for terminal block width: 6.2 mm, lettering field size: 5.6 x 10.5 mm, Number of individual labels: 80

UCT-TM 6 - Marker for terminal blocks

0828736

<https://www.phoenixcontact.com/in/products/0828736>



Marker for terminal blocks, Sheet, white, unlabeled, can be labeled with: TOPMARK NEO, TOPMARK LASER, BLUEMARK ID COLOR, BLUEMARK ID, BLUEMARK CLED, THERMOMARK PRIME, THERMOMARK CARD 2.0, THERMOMARK CARD, mounting type: snapped, for terminal block width: 6.2 mm, lettering field size: 5.6 x 10.5 mm, Number of individual labels: 60

PT 4/1P - Feed-through terminal block

3211937

<https://www.phoenixcontact.com/in/products/3211937>



UCT-TM 6 CUS - Marker for terminal blocks

0829602

<https://www.phoenixcontact.com/in/products/0829602>



Marker for terminal blocks, can be ordered: by sheet, white, labeled according to customer specifications, mounting type: snap into tall marker groove, for terminal block width: 6.2 mm, lettering field size: 5.6 x 10.5 mm, Number of individual labels: 60

ZBF 6:UNBEDRUCKT - Zack Marker strip, flat

0808710

<https://www.phoenixcontact.com/in/products/0808710>



Zack Marker strip, flat, Strip, white, unlabeled, can be labeled with: PLOTMARK, CMS-P1-PLOTTER, mounting type: snapped, for terminal block width: 6.2 mm, lettering field size: 5.15 x 6.15 mm, Number of individual labels: 10

PT 4/1P - Feed-through terminal block

3211937

<https://www.phoenixcontact.com/in/products/3211937>



ZBF 6 CUS - Zack Marker strip, flat

0825027

<https://www.phoenixcontact.com/in/products/0825027>



Zack Marker strip, flat, Strip, can be ordered: Strip, white, labeled according to customer specifications, mounting type: snap into flat marker groove, for terminal block width: 6.2 mm, lettering field size: 5.15 x 6.15 mm, Number of individual labels: 10

UC-TMF 6 - Marker for terminal blocks

0818140

<https://www.phoenixcontact.com/in/products/0818140>



Marker for terminal blocks, Sheet, white, unlabeled, can be labeled with: BLUEMARK ID COLOR, BLUEMARK ID, BLUEMARK CLED, PLOTMARK, CMS-P1-PLOTTER, mounting type: snapped, for terminal block width: 6.2 mm, lettering field size: 5.6 x 5.1 mm, Number of individual labels: 80

PT 4/1P - Feed-through terminal block

3211937

<https://www.phoenixcontact.com/in/products/3211937>



UC-TMF 6 CUS - Marker for terminal blocks

0824646

<https://www.phoenixcontact.com/in/products/0824646>



Marker for terminal blocks, can be ordered: by sheet, white, labeled according to customer specifications, mounting type: snap into flat marker groove, for terminal block width: 6.2 mm, lettering field size: 5.6 x 5.1 mm, Number of individual labels: 80

UCT-TMF 6 - Marker for terminal blocks

0828746

<https://www.phoenixcontact.com/in/products/0828746>



Marker for terminal blocks, Sheet, white, unlabeled, can be labeled with: TOPMARK NEO, TOPMARK LASER, BLUEMARK ID COLOR, BLUEMARK ID, BLUEMARK CLED, THERMOMARK PRIME, THERMOMARK CARD 2.0, THERMOMARK CARD, mounting type: snapped, for terminal block width: 6.2 mm, lettering field size: 5.4 x 4.7 mm, Number of individual labels: 60

PT 4/1P - Feed-through terminal block

3211937

<https://www.phoenixcontact.com/in/products/3211937>



UCT-TMF 6 CUS - Marker for terminal blocks

0829665

<https://www.phoenixcontact.com/in/products/0829665>



Marker for terminal blocks, can be ordered: by sheet, white, labeled according to customer specifications, mounting type: snap into flat marker groove, for terminal block width: 6.2 mm, lettering field size: 5.4 x 4.7 mm, Number of individual labels: 60

ZBF 6,LGS:FORTL.ZAHLEN - Zack Marker strip, flat

0808749

<https://www.phoenixcontact.com/in/products/0808749>



Zack Marker strip, flat, Strip, white, labeled, printed horizontally: consecutive numbers 1 ... 10, 11 ... 20, etc. up to 91 ... 100, mounting type: snapped, for terminal block width: 6.2 mm, lettering field size: 5.15 x 6.15 mm, Number of individual labels: 10

PT 4/1P - Feed-through terminal block

3211937

<https://www.phoenixcontact.com/in/products/3211937>

ZBF 6,QR:FORTL.ZAHLEN - Zack Marker strip, flat

0808765

<https://www.phoenixcontact.com/in/products/0808765>



Zack Marker strip, flat, Strip, white, labeled, Printed vertically: consecutive numbers 1 ... 10, 11 ... 20, etc. up to 91 ... 100, mounting type: snapped, for terminal block width: 6.2 mm, lettering field size: 5.15 x 6.15 mm, Number of individual labels: 10

ZBF 6,LGS:GERADE ZAHLEN - Zack Marker strip, flat

0810834

<https://www.phoenixcontact.com/in/products/0810834>



Zack Marker strip, flat, Strip, white, labeled, printed horizontally: consecutive even numbers 2 ... 20, 22 ... 40, etc. up to 82 ... 100, mounting type: snapped, for terminal block width: 6.2 mm, lettering field size: 5.15 x 6.15 mm, Number of individual labels: 10

PT 4/1P - Feed-through terminal block

3211937

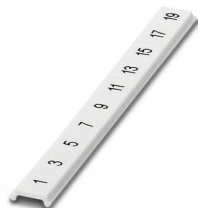
<https://www.phoenixcontact.com/in/products/3211937>



ZBF 6,LGS:UNGERADE ZAHLEN - Zack Marker strip, flat

0810876

<https://www.phoenixcontact.com/in/products/0810876>



Zack Marker strip, flat, Strip, white, labeled, printed horizontally: Odd numbers 1 - 19, 21 - 39, etc. up to 81 - 99, mounting type: snapped, for terminal block width: 6.2 mm, lettering field size: 5.15 x 6.15 mm, Number of individual labels: 10

MPS-MT - Test plugs

0201744

<https://www.phoenixcontact.com/in/products/0201744>



Test plugs, with solder connection up to 1 mm² conductor cross section, number of positions: 1, fuse type: , mounting type: , , color: gray

PT 4/1P - Feed-through terminal block

3211937

<https://www.phoenixcontact.com/in/products/3211937>



MPS-IH WH - Insulating sleeve

0201663

<https://www.phoenixcontact.com/in/products/0201663>

Insulating sleeve, fuse type: , mounting type: , , color: white



MPS-IH RD - Insulating sleeve

0201676

<https://www.phoenixcontact.com/in/products/0201676>

Insulating sleeve, fuse type: , mounting type: , , color: red



PT 4/1P - Feed-through terminal block

3211937

<https://www.phoenixcontact.com/in/products/3211937>

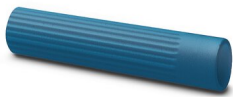


MPS-IH BU - Insulating sleeve

0201689

<https://www.phoenixcontact.com/in/products/0201689>

Insulating sleeve, fuse type: , mounting type: , , color: blue



MPS-IH YE - Insulating sleeve

0201692

<https://www.phoenixcontact.com/in/products/0201692>

Insulating sleeve, fuse type: , mounting type: , , color: yellow



PT 4/1P - Feed-through terminal block

3211937

<https://www.phoenixcontact.com/in/products/3211937>



MPS-IH GN - Insulating sleeve

0201702

<https://www.phoenixcontact.com/in/products/0201702>

Insulating sleeve, fuse type: , mounting type: , , color: green



MPS-IH GY - Insulating sleeve

0201728

<https://www.phoenixcontact.com/in/products/0201728>

Insulating sleeve, fuse type: , mounting type: , , color: gray



PT 4/1P - Feed-through terminal block

3211937

<https://www.phoenixcontact.com/in/products/3211937>



MPS-IH BK - Insulating sleeve

0201731

<https://www.phoenixcontact.com/in/products/0201731>

Insulating sleeve, fuse type: , mounting type: , , color: black



ISH 4/0,5 - Insulating sleeve

3002885

<https://www.phoenixcontact.com/in/products/3002885>

Insulating sleeve, color: gray



PT 4/1P - Feed-through terminal block

3211937

<https://www.phoenixcontact.com/in/products/3211937>



ISH 4/1,0 - Insulating sleeve

3002898

<https://www.phoenixcontact.com/in/products/3002898>



Insulating sleeve, color: black

PAI-4-FIX-5/6 BU - Test adapter

3035975

<https://www.phoenixcontact.com/in/products/3035975>



4 mm test adapter, for terminal blocks with 5.2 mm and 6.2 mm pitch

PT 4/1P - Feed-through terminal block

3211937

<https://www.phoenixcontact.com/in/products/3211937>

PAI-4-FIX-5/6 OG - Test adapter

3035974

<https://www.phoenixcontact.com/in/products/3035974>



4 mm test adapter, for terminal blocks with 5.2 mm and 6.2 mm pitch

PAI-4-FIX-5/6 YE - Test adapter

3035977

<https://www.phoenixcontact.com/in/products/3035977>



4 mm test adapter, for terminal blocks with 5.2 mm and 6.2 mm pitch

PT 4/1P - Feed-through terminal block

3211937

<https://www.phoenixcontact.com/in/products/3211937>

PAI-4-FIX-5/6 RD - Test adapter

3035976

<https://www.phoenixcontact.com/in/products/3035976>



4 mm test adapter, for terminal blocks with 5.2 mm and 6.2 mm pitch

PAI-4-FIX-5/6 GN - Test adapter

3035978

<https://www.phoenixcontact.com/in/products/3035978>



4 mm test adapter, for terminal blocks with 5.2 mm and 6.2 mm pitch

PT 4/1P - Feed-through terminal block



3211937

<https://www.phoenixcontact.com/in/products/3211937>

PAI-4-FIX-5/6 BK - Test adapter

3035980

<https://www.phoenixcontact.com/in/products/3035980>



4 mm test adapter, for terminal blocks with 5.2 mm and 6.2 mm pitch

PAI-4-FIX-5/6 GY - Test adapter

3035982

<https://www.phoenixcontact.com/in/products/3035982>



4 mm test adapter, for terminal blocks with 5.2 mm and 6.2 mm pitch

PT 4/1P - Feed-through terminal block



3211937

<https://www.phoenixcontact.com/in/products/3211937>

PAI-4-FIX-5/6 VT - Test adapter

3035979

<https://www.phoenixcontact.com/in/products/3035979>



4 mm test adapter, for terminal blocks with 5.2 mm and 6.2 mm pitch

PAI-4-FIX-5/6 BN - Test adapter

3035981

<https://www.phoenixcontact.com/in/products/3035981>



4 mm test adapter, for terminal blocks with 5.2 mm and 6.2 mm pitch

PT 4/1P - Feed-through terminal block

3211937

<https://www.phoenixcontact.com/in/products/3211937>



PAI-4-FIX-5/6 WH - Test adapter

3035983

<https://www.phoenixcontact.com/in/products/3035983>



4 mm test adapter, for terminal blocks with 5.2 mm and 6.2 mm pitch

PS-6 - Test plugs

3030996

<https://www.phoenixcontact.com/in/products/3030996>



Test plugs, Modular test plug, number of positions: 1, fuse type: , mounting type: , , color: red

PT 4/1P - Feed-through terminal block

3211937

<https://www.phoenixcontact.com/in/products/3211937>



PS-6/2,3MM RD - Test plugs

3038736

<https://www.phoenixcontact.com/in/products/3038736>



Test plugs, number of positions: 1, fuse type: , mounting type: , , color: red

PROJECT COMPLETE - Software

1050453

<https://www.phoenixcontact.com/in/products/1050453>



Intuitive planning and marking software for configuring terminal strips and for professional marking of marking materials for terminal blocks, conductors, cables, devices, and systems. The software is available for download

PT 4/1P - Feed-through terminal block



3211937

<https://www.phoenixcontact.com/in/products/3211937>

TMT 6 R - Marker for terminal blocks

0816498

<https://www.phoenixcontact.com/in/products/0816498>



Marker for terminal blocks, Roll, white, unlabeled, can be labeled with: THERMOMARK ROLL 2.0, THERMOMARK ROLL, THERMOMARK ROLL X1, THERMOMARK ROLLMASTER 300/600, THERMOMARK X1.2, THERMOMARK S1.1, perforated, mounting type: snapped, snap into flat marker groove, for terminal block width: 6.2 mm, lettering field size: 6.35 x 6.15 mm, Number of individual labels: 16000

TMT 6 R CUS - Marker for terminal blocks

0824488

<https://www.phoenixcontact.com/in/products/0824488>



Marker for terminal blocks, can be ordered: by line, white, labeled according to customer specifications, mounting type: snap into universal marker groove, snap into flat marker groove, for terminal block width: 6.2 mm, lettering field size: 6.35 x 6.15 mm

PT 4/1P - Feed-through terminal block

3211937

<https://www.phoenixcontact.com/in/products/3211937>

TMT (EX9,5)R - Marker for terminal blocks

0828295

<https://www.phoenixcontact.com/in/products/0828295>



Marker for terminal blocks, Roll, white, unlabeled, can be labeled with: THERMOMARK E.300 (D)/600 (D), THERMOMARK ROLL 2.0, THERMOMARK ROLL, THERMOMARK ROLL X1, THERMOMARK ROLLMASTER 300/600, THERMOMARK X1.2, mounting type: snapped, snap into tall marker groove, lettering field size: 9.5 x 50000 mm, Number of individual labels: 1

US-TM 100 - Marker for terminal blocks

0829255

<https://www.phoenixcontact.com/in/products/0829255>



Marker for terminal blocks, Card, white, unlabeled, can be labeled with: BLUEMARK ID COLOR, BLUEMARK ID, THERMOMARK PRIME, THERMOMARK CARD 2.0, THERMOMARK CARD, mounting type: snapped, lettering field size: 104 x 9.8 mm, Number of individual labels: 13

PT 4/1P - Feed-through terminal block

3211937

<https://www.phoenixcontact.com/in/products/3211937>

CLIPFIX 35 - End clamp

3022218

<https://www.phoenixcontact.com/in/products/3022218>



Quick mounting end clamp for NS 35/7,5 DIN rail or NS 35/15 DIN rail, with marking option, width: 9.5 mm, color: gray

CLIPFIX 35-5 - End clamp

3022276

<https://www.phoenixcontact.com/in/products/3022276>



Quick mounting end clamp for NS 35/7,5 DIN rail or NS 35/15 DIN rail, with marking option, with parking option for FBS...5, FBS...6, KSS 5, KSS 6, width: 5.15 mm, color: gray

PT 4/1P - Feed-through terminal block

3211937

<https://www.phoenixcontact.com/in/products/3211937>

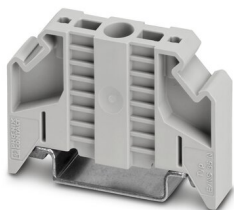


E/NS 35 N - End clamp

0800886

<https://www.phoenixcontact.com/in/products/0800886>

End clamp, width: 9.5 mm, color: gray



PP-H 4/ 1 - Plug

3212010

<https://www.phoenixcontact.com/in/products/3212010>

Plug, nom. voltage: 800 V, nominal current: 32 A, number of connections: 1, number of positions: 1, connection method: Push-in connection, 1st level connection left, Rated cross section: 4 mm², cross section: 0.2 mm² - 6 mm², mounting type: Plug-in mounting, color: gray



PT 4/1P - Feed-through terminal block

3211937

<https://www.phoenixcontact.com/in/products/3211937>

PP-H 4/ 2 - Plug

3212016

<https://www.phoenixcontact.com/in/products/3212016>



Plug, nom. voltage: 800 V, nominal current: 32 A, number of connections: 2, number of positions: 2, connection method: Push-in connection, 1st level connection left, Rated cross section: 4 mm², cross section: 0.2 mm² - 6 mm², color: gray

PP-H 4/ 3 - Plug

3212022

<https://www.phoenixcontact.com/in/products/3212022>



Plug, nom. voltage: 800 V, nominal current: 32 A, number of connections: 3, number of positions: 3, connection method: Push-in connection, 1st level connection left, Rated cross section: 4 mm², cross section: 0.2 mm² - 6 mm², color: gray

PT 4/1P - Feed-through terminal block

3211937

<https://www.phoenixcontact.com/in/products/3211937>

PP-H 4/ 4 - Plug

3212029

<https://www.phoenixcontact.com/in/products/3212029>



Plug, nom. voltage: 800 V, nominal current: 32 A, number of connections: 4, number of positions: 4, connection method: Push-in connection, 1st level connection left, Rated cross section: 4 mm², cross section: 0.2 mm² - 6 mm², mounting type: Plug-in mounting, color: gray

PP-H 4/ 5 - Plug

3212035

<https://www.phoenixcontact.com/in/products/3212035>



Plug, nom. voltage: 800 V, nominal current: 32 A, number of connections: 5, number of positions: 5, connection method: Push-in connection, 1st level connection left, Rated cross section: 4 mm², cross section: 0.2 mm² - 6 mm², color: gray

PT 4/1P - Feed-through terminal block

3211937

<https://www.phoenixcontact.com/in/products/3211937>

PP-H 4/ 6 - Plug

3212041

<https://www.phoenixcontact.com/in/products/3212041>



Plug, nom. voltage: 800 V, nominal current: 32 A, number of connections: 6, number of positions: 6, connection method: Push-in connection, 1st level connection left, Rated cross section: 4 mm², cross section: 0.2 mm² - 6 mm², mounting type: Plug-in mounting, color: gray

PP-H 4/ 7 - Plug

3212048

<https://www.phoenixcontact.com/in/products/3212048>



Plug, nom. voltage: 800 V, nominal current: 32 A, number of connections: 7, number of positions: 7, connection method: Push-in connection, 1st level connection left, Rated cross section: 4 mm², cross section: 0.2 mm² - 6 mm², color: gray

PT 4/1P - Feed-through terminal block

3211937

<https://www.phoenixcontact.com/in/products/3211937>

PP-H 4/ 8 - Plug

3212054

<https://www.phoenixcontact.com/in/products/3212054>



Plug, nom. voltage: 800 V, nominal current: 32 A, number of connections: 8, number of positions: 8, connection method: Push-in connection, 1st level connection left, Rated cross section: 4 mm², cross section: 0.2 mm² - 6 mm², color: gray

PP-H 4/ 9 - Plug

3212061

<https://www.phoenixcontact.com/in/products/3212061>



Plug, nom. voltage: 800 V, nominal current: 32 A, number of connections: 9, number of positions: 9, connection method: Push-in connection, 1st level connection left, Rated cross section: 4 mm², cross section: 0.2 mm² - 6 mm², color: gray

PT 4/1P - Feed-through terminal block

3211937

<https://www.phoenixcontact.com/in/products/3211937>

PP-H 4/10 - Plug

3212067

<https://www.phoenixcontact.com/in/products/3212067>



Plug, nom. voltage: 800 V, nominal current: 32 A, number of connections: 10, number of positions: 10, connection method: Push-in connection, 1st level connection left, Rated cross section: 4 mm², cross section: 0.2 mm² - 6 mm², color: gray

PP-H 4/11 - Plug

3212074

<https://www.phoenixcontact.com/in/products/3212074>



Plug, nom. voltage: 800 V, nominal current: 32 A, number of connections: 11, number of positions: 11, connection method: Push-in connection, 1st level connection left, Rated cross section: 4 mm², cross section: 0.2 mm² - 6 mm², color: gray

PT 4/1P - Feed-through terminal block

3211937

<https://www.phoenixcontact.com/in/products/3211937>

PP-H 4/ 1 BU - Plug

3212077

<https://www.phoenixcontact.com/in/products/3212077>



Plug, nom. voltage: 800 V, nominal current: 32 A, number of connections: 1, number of positions: 1, connection method: Push-in connection, 1st level connection left, Rated cross section: 4 mm², cross section: 0.2 mm² - 6 mm², color: blue

PP-H 4/12 - Plug

3212080

<https://www.phoenixcontact.com/in/products/3212080>



Plug, nom. voltage: 800 V, nominal current: 32 A, number of connections: 12, number of positions: 12, connection method: Push-in connection, 1st level connection left, Rated cross section: 4 mm², cross section: 0.2 mm² - 6 mm², color: gray

PT 4/1P - Feed-through terminal block

3211937

<https://www.phoenixcontact.com/in/products/3211937>

PP-H 4/13 - Plug

3212087

<https://www.phoenixcontact.com/in/products/3212087>



Plug, nom. voltage: 800 V, nominal current: 32 A, number of connections: 13, number of positions: 13, connection method: Push-in connection, 1st level connection left, Rated cross section: 4 mm², cross section: 0.2 mm² - 6 mm², color: gray

PP-H 4/ 1 GNYE - Plug

3212088

<https://www.phoenixcontact.com/in/products/3212088>



Plug, nom. voltage: 800 V, nominal current: 32 A, number of connections: 1, number of positions: 1, connection method: Push-in connection, 1st level connection left, Rated cross section: 4 mm², cross section: 0.2 mm² - 6 mm², color: green-yellow

PT 4/1P - Feed-through terminal block

3211937

<https://www.phoenixcontact.com/in/products/3211937>

PP-H 4/14 - Plug

3212093

<https://www.phoenixcontact.com/in/products/3212093>



Plug, nom. voltage: 800 V, nominal current: 32 A, number of connections: 14, number of positions: 14, connection method: Push-in connection, 1st level connection left, Rated cross section: 4 mm², cross section: 0.2 mm² - 6 mm², color: gray

PP-H 4/15 - Plug

3212100

<https://www.phoenixcontact.com/in/products/3212100>



Plug, nom. voltage: 800 V, nominal current: 32 A, number of connections: 15, number of positions: 15, connection method: Push-in connection, 1st level connection left, Rated cross section: 4 mm², cross section: 0.2 mm² - 6 mm², color: gray

PT 4/1P - Feed-through terminal block

3211937

<https://www.phoenixcontact.com/in/products/3211937>

PP-H 4/ 1-L - Plug

3211948

<https://www.phoenixcontact.com/in/products/3211948>



Plug, nom. voltage: 800 V, nominal current: 32 A, number of connections: 1, number of positions: 1, connection method: Push-in connection, 1st level connection left, Rated cross section: 4 mm², cross section: 0.2 mm² - 6 mm², color: gray

PP-H 4/ 1-L BU - Plug

3211951

<https://www.phoenixcontact.com/in/products/3211951>



Plug, nom. voltage: 800 V, nominal current: 32 A, number of connections: 1, number of positions: 1, connection method: Push-in connection, 1st level connection left, Rated cross section: 4 mm², cross section: 0.2 mm² - 6 mm², color: blue

PT 4/1P - Feed-through terminal block

3211937

<https://www.phoenixcontact.com/in/products/3211937>

PP-H 4/ 1-L GNYE - Plug

3211958

<https://www.phoenixcontact.com/in/products/3211958>



Plug, nom. voltage: 800 V, nominal current: 32 A, number of connections: 1, number of positions: 1, connection method: Push-in connection, 1st level connection left, Rated cross section: 4 mm², cross section: 0.2 mm² - 6 mm², color: green-yellow

PP-H 4/ 1-M BU - Plug

3211964

<https://www.phoenixcontact.com/in/products/3211964>



Plug, nom. voltage: 800 V, nominal current: 32 A, number of connections: 1, number of positions: 1, connection method: Push-in connection, 1st level connection left, Rated cross section: 4 mm², cross section: 0.2 mm² - 6 mm², color: blue

PT 4/1P - Feed-through terminal block

3211937

<https://www.phoenixcontact.com/in/products/3211937>

PP-H 4/ 1-M - Plug

3211965

<https://www.phoenixcontact.com/in/products/3211965>



Plug, nom. voltage: 800 V, nominal current: 32 A, number of connections: 1, number of positions: 1, connection method: Push-in connection, 1st level connection left, Rated cross section: 4 mm², cross section: 0.2 mm² - 6 mm², color: gray

PP-H 4/ 1-M GNYE - Plug

3211971

<https://www.phoenixcontact.com/in/products/3211971>



Plug, nom. voltage: 800 V, nominal current: 32 A, number of connections: 1, number of positions: 1, connection method: Push-in connection, 1st level connection left, Rated cross section: 4 mm², cross section: 0.2 mm² - 6 mm², color: green-yellow

PT 4/1P - Feed-through terminal block

3211937

<https://www.phoenixcontact.com/in/products/3211937>

PP-H 4/ 1-R - Plug

3211977

<https://www.phoenixcontact.com/in/products/3211977>



Plug, nom. voltage: 800 V, nominal current: 32 A, number of connections: 1, number of positions: 1, connection method: Push-in connection, 1st level connection left, Rated cross section: 4 mm², cross section: 0.2 mm² - 6 mm², color: gray

PP-H 4/ 1-R BU - Plug

3211980

<https://www.phoenixcontact.com/in/products/3211980>



Plug, nom. voltage: 800 V, nominal current: 32 A, number of connections: 1, number of positions: 1, connection method: Push-in connection, 1st level connection left, Rated cross section: 4 mm², cross section: 0.2 mm² - 6 mm², color: blue

PT 4/1P - Feed-through terminal block



3211937

<https://www.phoenixcontact.com/in/products/3211937>

PP-H 4/ 1-R GNYE - Plug

3211987

<https://www.phoenixcontact.com/in/products/3211987>



Plug, nom. voltage: 800 V, nominal current: 32 A, number of connections: 1, number of positions: 1, connection method: Push-in connection, 1st level connection left, Rated cross section: 4 mm², cross section: 0.2 mm² - 6 mm², color: green-yellow

Phoenix Contact 2023 © - all rights reserved

<https://www.phoenixcontact.com>

PHOENIX CONTACT (I) Pvt. Ltd.

A-58/2, Okhla Industrial Area, Phase - II, New Delhi-110 020

+91.1275.71420

info@phoenixcontact.co.in