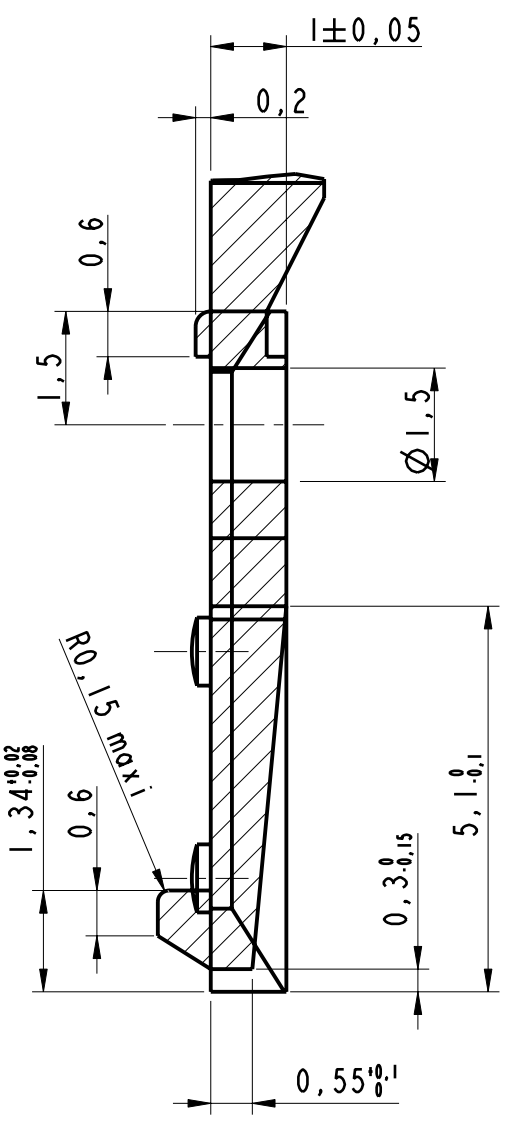
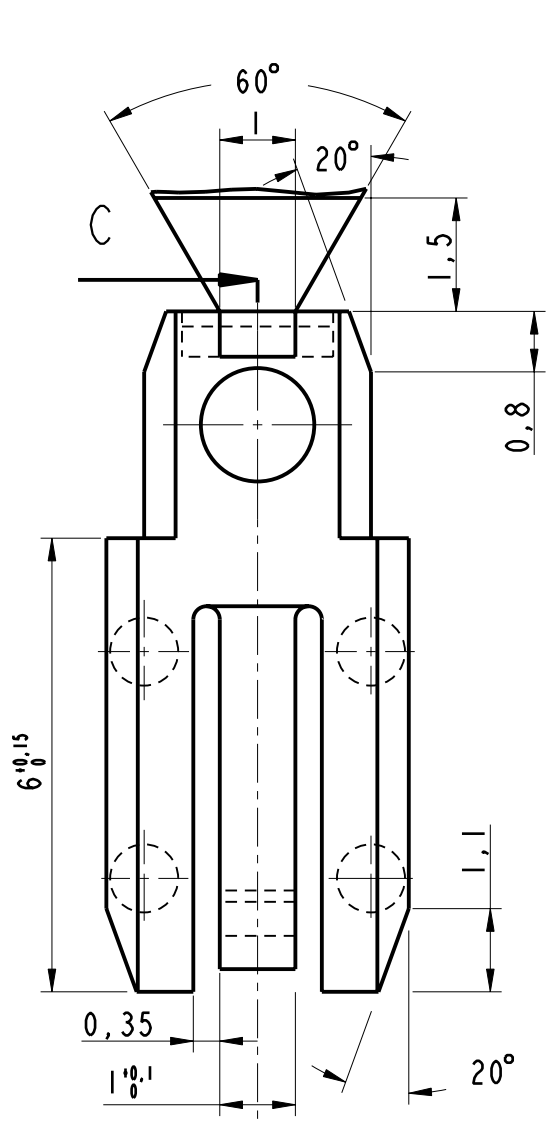
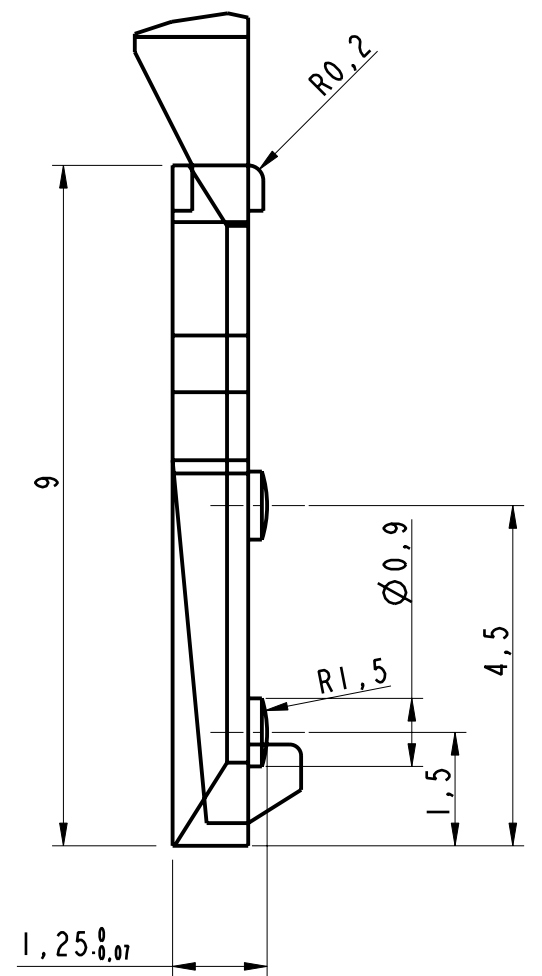


Rep. / Plan	Cotes de qualif. [NOTA 3]	Cotes d'Etude



**EXIGENCES ETUDE**  
**GARANTIE DES COTES EN SERIE**  
 ① Garantie du mini et du maxi de la cote  
 ② Garantie du maxi de la cote  
 ③ Garantie du mini de la cote

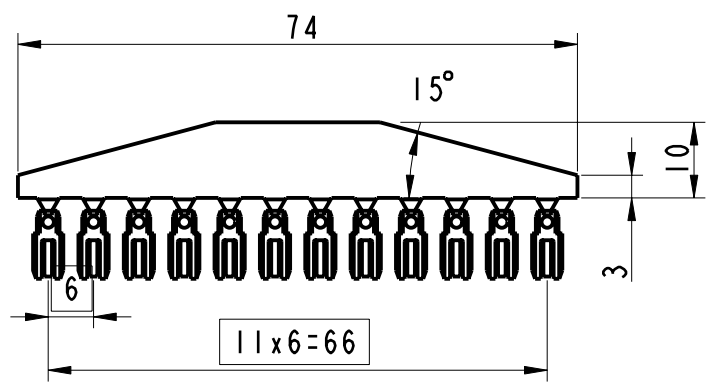
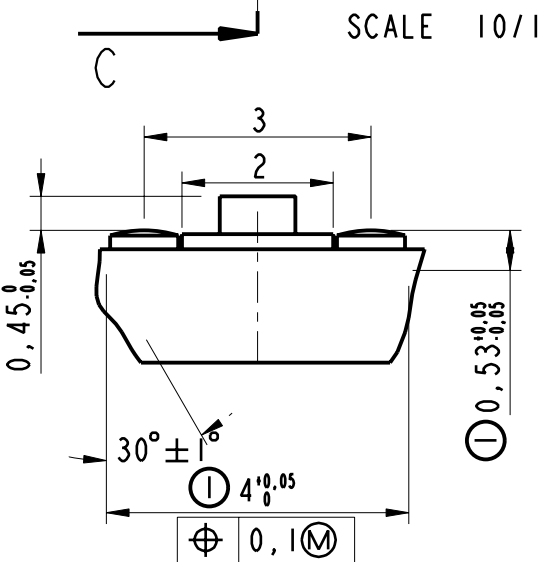
A : Cote ou exigence pour conception de machine de montage  
 Ex. : ①A, ②A ou ③A

**NOTA :**  
 1. L'outillage sera qualifié sur les cotes et tolérances du plan.  
 2. Sous un effort de 100 g a la premiere introduction du calibre.  
 3. lors d'un renouvellement ou d'une renovation de l'outillage, seules les cotes d'etude seront prises en compte.

**MATIERE**  
 VALOX 420 SED 30% de rebroye maxi

**NOTE: RoHS INFORMATION**  
 -The "LF" product meets European union Directives and other country regulations as described in GS-22-008.  
 -The product is not intended to be exposed to a manufacturing solder process.  
 -Packaging spec: see GS-14-920.

**PART-NUMBER**  
 8609-542LF



SCALE 1/1

rev	ecn no	dr	date
A	LS05-0086	MPE	2005-10-17
B	LS06-0208	LGO	2006-12-12
-	-	-	-
-	-	-	-
-	-	-	-

www.fciconnect.com		surface - ✓	tolerance std	projection	mm
		ISO 1302	ISO 406 ISO 1101		↔
TOLERANCES UNLESS OTHERWISE SPECIFIED					
Dr	ABHILASH	2005-10-17	ANGULAR	0.X ±0.3	size A3
Eng	TARON	2005-10-17	LINEAR	0.XX ±0.1	Scale 10/1
Chr	LEGARE	2005-10-17	0° ±2°	0.XXX ±0.05	ECN LS06-0208
Appr	LEGARE	2005-10-17	Product family	DIN	Spec ref
		Title PIONS pour barrettes de codage		Rev. B	
		8609		C-8609-1183	
		catalog no		CUSTOMER sheet 1 of 1	

Copyright FCI.