

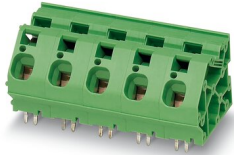
ZFKDS 10-15,00 - PCB terminal block



1986631

<https://www.phoenixcontact.com/in/products/1986631>

Please be informed that the data shown in this PDF document is generated from our Online Catalog. Please find the complete data in the user documentation. Our General Terms of Use for Downloads are valid.



PCB terminal block, nominal current: 76 A, rated voltage (III/2): 1000 V, nominal cross section: 10 mm², number of potentials: 1, number of rows: 1, number of positions per row: 1, product range: ZFKDS(A) 10, pitch: 15 mm, connection method: Spring-cage connection, mounting: Wave soldering, conductor/PCB connection direction: 45 °, color: green, Pin layout: Linear pinning, Solder pin [P]: 6.5 mm, number of solder pins per potential: 4, type of packaging: packed in cardboard. The article can be aligned to create different nos. of positions!

Your advantages

- Defined contact force ensures that contact remains stable over the long term
- Clamping space opened by means of fixed screwdriver enables convenient conductor connection
- Separate bridge shaft for easily connecting multiple positions to jumpers
- Quick and convenient testing using integrated test option

Commercial Data

| | |
|--------------------------------------|---------------------|
| Item number | 1986631 |
| Packing unit | 50 pc |
| Minimum order quantity | 50 pc |
| Sales Key | AAN |
| Product Key | AANMBB |
| Catalog Page | Page 479 (C-1-2013) |
| GTIN | 4017918973094 |
| Weight per Piece (including packing) | 12.55 g |
| Weight per Piece (excluding packing) | 12.3 g |
| Customs tariff number | 85369010 |
| Country of origin | PL |

1986631

<https://www.phoenixcontact.com/in/products/1986631>

Technical Data

Product properties

| | |
|---------------------------|----------------------------------|
| Type | PC terminal block can be aligned |
| Product line | COMBICON Terminals L |
| Product type | Printed circuit board terminal |
| Product family | ZFKDS(A) 10 |
| Number of positions | 1 |
| Pitch | 15 mm |
| Number of connections | 1 |
| Number of rows | 1 |
| Number of potentials | 1 |
| Pin layout | Linear pinning |
| Solder pins per potential | 4 |

Electrical properties

| | |
|-----------------------------|--|
| Nominal current I_N | 76 A |
| Nominal voltage U_N | 1000 V (800 V when using the plug-in bridge) |
| Degree of pollution | 3 |
| Rated voltage (III/3) | 1000 V |
| Rated surge voltage (III/3) | 8 kV |
| Rated voltage (III/2) | 1000 V |
| Rated surge voltage (III/2) | 8 kV |
| Rated voltage (II/2) | 1000 V |
| Rated surge voltage (II/2) | 8 kV |

Connection data

Connection technology

| | |
|-----------------------|----------------------------------|
| Type | PC terminal block can be aligned |
| Nominal cross section | 10 mm ² |

Conductor connection

| | |
|---|---|
| Connection method | Spring-cage connection |
| Conductor cross section rigid | 0.2 mm ² ... 16 mm ² |
| Conductor cross section flexible | 0.2 mm ² ... 16 mm ² |
| Conductor cross section AWG | 24 ... 6 |
| Conductor cross section flexible, with ferrule without plastic sleeve | 0.25 mm ² ... 10 mm ² |
| Conductor cross section, flexible, with ferrule, with plastic sleeve | 0.25 mm ² ... 10 mm ² |
| Stripping length | 12 mm |

Mounting

| | |
|---------------|----------------|
| Mounting type | Wave soldering |
| Pin layout | Linear pinning |

ZFKDS 10-15,00 - PCB terminal block

1986631

<https://www.phoenixcontact.com/in/products/1986631>

Material specifications

Material data - contact

| | |
|--|--|
| Note | WEEE/RoHS-compliant, free of whiskers according to IEC 60068-2-82/JEDEC JESD 201 |
| Contact material | Cu alloy |
| Surface characteristics | hot-dip tin-plated |
| Metal surface terminal point (top layer) | Tin (10 - 16 μm Sn) |
| Metal surface soldering area (top layer) | Tin (10 - 16 μm Sn) |

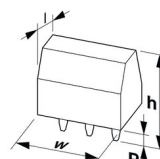
Material data - housing

| | |
|---|--------------|
| Color (Housing) | green (6021) |
| Insulating material | PA |
| Insulating material group | I |
| CTI according to IEC 60112 | 600 |
| Flammability rating according to UL 94 | V0 |
| Glow wire flammability index GWFI according to EN 60695-2-12 | 850 |
| Glow wire ignition temperature GWIT according to EN 60695-2-13 | 775 |
| Temperature for the ball pressure test according to EN 60695-10-2 | 125 °C |

Material data – actuating element

| | |
|---------------------------|--------------|
| Color (Actuating element) | green (6021) |
|---------------------------|--------------|

Dimensions

| | |
|-----------------------|--|
| Dimensional drawing |  |
| Pitch | 15 mm |
| Width [w] | 16.7 mm |
| Height [h] | 33.5 mm |
| Length [l] | 33.4 mm |
| Installed height | 27 mm |
| Solder pin length [P] | 6.5 mm |

PCB design

| | |
|-------------|-------|
| Pin spacing | 15 mm |
|-------------|-------|

Mechanical tests

Connection test

| | |
|---------------|-----------------------|
| Specification | IEC 60998-2-2:1991-10 |
| Result | Test passed |

ZFKDS 10-15,00 - PCB terminal block



1986631

<https://www.phoenixcontact.com/in/products/1986631>

Test for conductor damage and slackening

| | |
|---------------|-----------------------|
| Specification | IEC 60998-2-2:1991-10 |
| Result | Test passed |

Pull-out test

| | |
|---|---|
| Specification | IEC 60998-2-2:1991-10 |
| Conductor cross section/conductor type/tractive force setpoint/actual value | 0.2 mm ² / solid / > 10 N |
| | 0.2 mm ² / flexible / > 10 N |
| | 16 mm ² / solid / > 100 N |
| | 10 mm ² / flexible / > 90 N |

Electrical tests

Temperature-rise test

| | |
|-----------------------------------|--------------------------------|
| Specification | IEC 60998-2-1:1990-04 |
| Requirement temperature-rise test | Increase in temperature ≤ 45 K |

Insulation resistance

| | |
|--|-----------------------|
| Specification | IEC 60998-2-2:1991-10 |
| Insulation resistance, neighboring positions | 10 ⁹ Ω |

Air clearances and creepage distances |

| | |
|--|---------------------|
| Specification | IEC 60664-1:2007-04 |
| Insulating material group | I |
| Comparative tracking index (IEC 60112) | CTI 600 |
| Rated insulation voltage (III/3) | 1000 V |
| Rated surge voltage (III/3) | 8 kV |
| minimum clearance value - non-homogenous field (III/3) | 8 mm |
| minimum creepage distance (III/3) | 12.5 mm |
| Rated insulation voltage (III/2) | 1000 V |
| Rated surge voltage (III/2) | 8 kV |
| minimum clearance value - non-homogenous field (III/2) | 8 mm |
| minimum creepage distance (III/2) | 8 mm |
| Rated insulation voltage (II/2) | 1000 V |
| Rated surge voltage (II/2) | 8 kV |
| minimum clearance value - non-homogenous field (II/2) | 8 mm |
| minimum creepage distance (II/2) | 8 mm |

Environmental and real-life conditions

Vibration test

| | |
|---------------|-----------------------------|
| Specification | IEC 60068-2-6:1995-03 |
| Frequency | 10 - 150 - 10 Hz |
| Sweep speed | 1 octave/min |
| Amplitude | 0.35 mm (10 Hz ... 60.1 Hz) |
| Sweep speed | 5g (60.1 Hz ... 150 Hz) |

ZFKDS 10-15,00 - PCB terminal block



1986631

<https://www.phoenixcontact.com/in/products/1986631>

| | |
|------------------------|-------|
| Test duration per axis | 2.5 h |
|------------------------|-------|

Glow-wire test

| | |
|------------------|-----------------------|
| Specification | IEC 60998-2-2:1991-10 |
| Temperature | 850 °C |
| Time of exposure | 5 s |

Ambient conditions

| | |
|---|---|
| Ambient temperature (operation) | -40 °C ... 100 °C (Depending on the current carrying capacity/derating curve) |
| Ambient temperature (storage/transport) | -40 °C ... 70 °C |
| Relative humidity (storage/transport) | 30 % ... 70 % |
| Ambient temperature (assembly) | -5 °C ... 55 °C |

Packaging specifications

| | |
|-------------------|---------------------|
| Type of packaging | packed in cardboard |
|-------------------|---------------------|

ZFKDS 10-15,00 - PCB terminal block

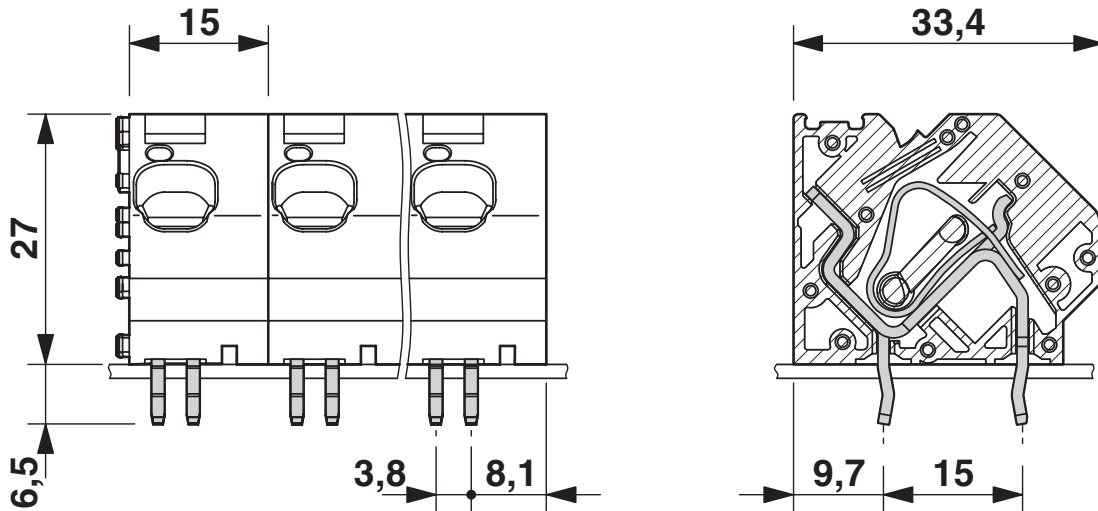


1986631

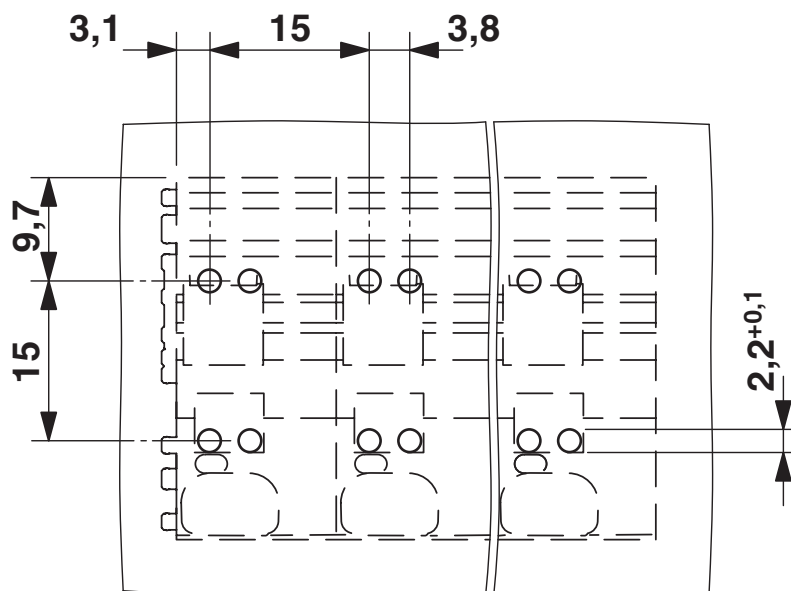
<https://www.phoenixcontact.com/in/products/1986631>

Drawings

Dimensional drawing



Drilling plan/solder pad geometry



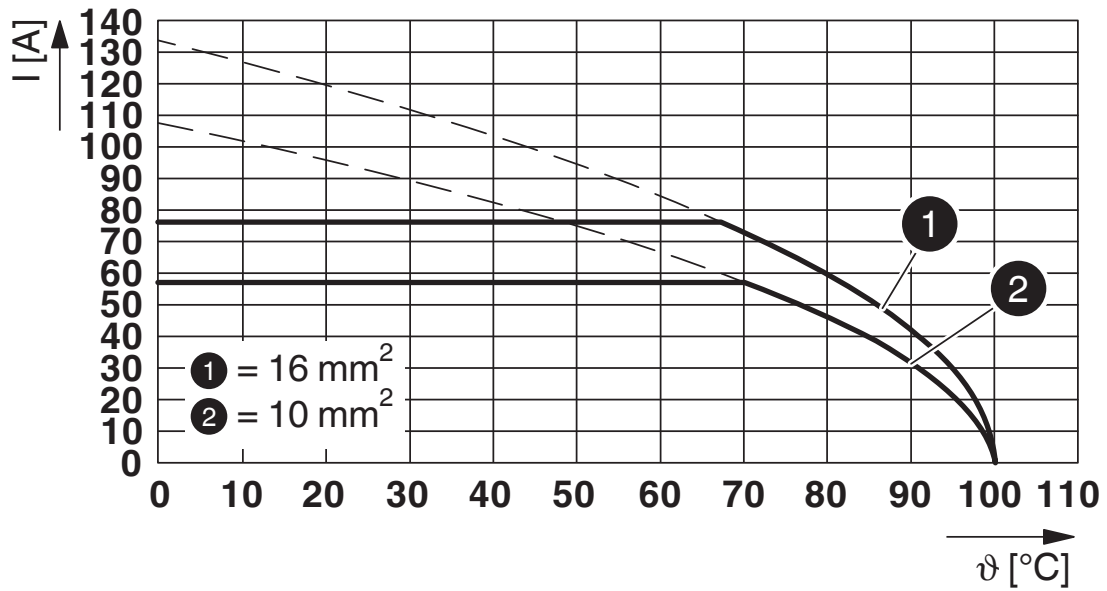
ZFKDS 10-15,00 - PCB terminal block



1986631

<https://www.phoenixcontact.com/in/products/1986631>

Diagram



Type: ZFKDS 10-15,00


ZFKDS 10-15,00 - PCB terminal block





1986631


<https://www.phoenixcontact.com/in/products/1986631>

Approvals

|  IECEE CB Scheme Approval ID: DE-51235 | Nominal Voltage U_N | Nominal Current I_N | Cross Section AWG | Cross Section mm^2 |
|---|-----------------------|-----------------------|-------------------|-----------------------------|
| | 1000 V | 76 A | - | 0.2 - 16 |

|  EAC Approval ID: B.01687 |
|--|
|--|

|  cULus Recognized Approval ID: E60425-19941110 | Nominal Voltage U_N | Nominal Current I_N | Cross Section AWG | Cross Section mm^2 |
|---|-----------------------|-----------------------|-------------------|-----------------------------|
| | 600 V | 65 A | 24 - 6 | - |
| | 600 V | 65 A | 24 - 6 | - |

|  VDE report with production monitoring Approval ID: 40036082 | Nominal Voltage U_N | Nominal Current I_N | Cross Section AWG | Cross Section mm^2 |
|---|-----------------------|-----------------------|-------------------|-----------------------------|
| | 1000 V | 76 A | - | 0.2 - 16 |

ZFKDS 10-15,00 - PCB terminal block



1986631

<https://www.phoenixcontact.com/in/products/1986631>

Classifications

ECLASS

| | |
|-------------|----------|
| ECLASS-11.0 | 27460101 |
| ECLASS-12.0 | 27460101 |
| ECLASS-13.0 | 27460101 |

ETIM

| | |
|----------|----------|
| ETIM 8.0 | EC002643 |
|----------|----------|

UNSPSC

| | |
|-------------|----------|
| UNSPSC 21.0 | 39121400 |
|-------------|----------|

ZFKDS 10-15,00 - PCB terminal block



1986631

<https://www.phoenixcontact.com/in/products/1986631>

Environmental Product Compliance

| | |
|------------|---|
| China RoHS | Environmentally friendly use period: unlimited = EFUP-e No hazardous substances above threshold values |
|------------|---|

ZFKDS 10-15,00 - PCB terminal block



1986631

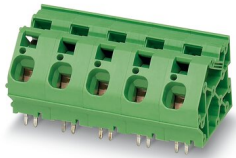
<https://www.phoenixcontact.com/in/products/1986631>

Mandatory Accessories

ZFKDSA 10-16,7 - PCB terminal block

1987067

<https://www.phoenixcontact.com/in/products/1987067>



PCB terminal block, nominal current: 76 A, rated voltage (III/2): 1000 V, nominal cross section: 10 mm², number of potentials: 1, number of rows: 1, number of positions per row: 1, product range: ZFKDS(A) 10, pitch: 15 mm, connection method: Spring-cage connection, mounting: Wave soldering, conductor/PCB connection direction: 45 °, color: green, Pin layout: Linear pinning, Solder pin [P]: 6.5 mm, number of solder pins per potential: 4, type of packaging: packed in cardboard. The article can be aligned to create different nos. of positions!

Phoenix Contact 2023 © - all rights reserved
<https://www.phoenixcontact.com>

PHOENIX CONTACT (I) Pvt. Ltd.
A-58/2, Okhla Industrial Area, Phase - II, New Delhi-110 020

+91.1275.71420
info@phoenixcontact.co.in