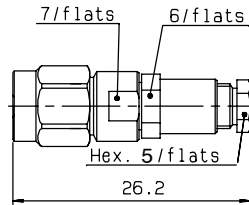
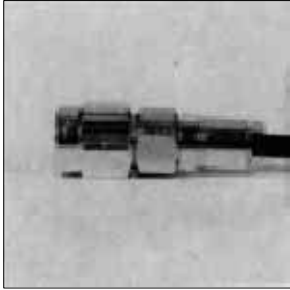




STRAIGHT PLUGS CLAMP TYPE FOR FLEXIBLE CABLES



Cable group	Part number (gold)	Part number (passivated)	Captive center contact	Assembly
2.6 / 50 / S	R125 091 000	R125 091 001	yes	M01

STRAIGHT PLUGS CRIMP TYPE FOR FLEXIBLE CABLES

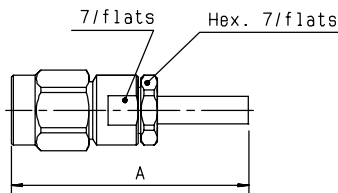
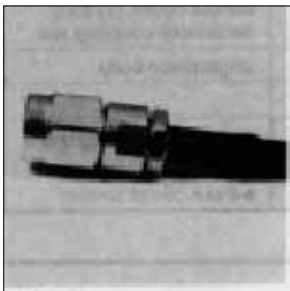


Fig. 1

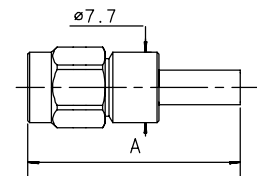


Fig. 2

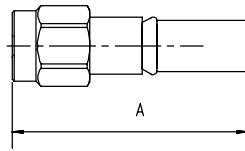


Fig. 3

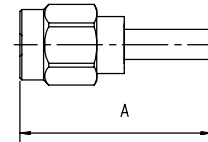


Fig. 4

Cable group	Part number (gold)	Part number (passivated)	Fig.	Dimensions A (mm)	Captive center contact	Assembly	Note
2 / 50 / S	R125 069 000		1	26	yes	M04	
2.6 / 50 / S	R125 071 120	R125 071 121	2	23.4	yes	M05	full crimp type/ single piece body
2.6 / 50 / S	R125 072 000*	R125 072 001*	3	21.1	no	M02	single piece body
2.6 / 50 / S	R125 073 000*	R125 073 001	1	26	yes	M04	
2.6 / 50 / D	R125 072 080*	R125 072 081	3	20.1	no	M02	single piece body
2.6 / 50 / D	R125 072 220	R125 072 221	2	23.4	yes	M05	full crimp type/ single piece body
5 / 50 / S	R125 075 000	R125 075 001	4	24.9	no	M02	single piece body
5 / 50 / S	R125 075 320	R125 075 321	2	26.4	yes	M05	full crimp type/ single piece body
5 / 50 / S		R125 076 201●	3	24.2	no	M02	single piece body/ LMR 200 cable
5 / 50 / D	R125 076 000*	R125 076 001	4	25	no	M02	single piece body
5 / 50 / D	R125 076 120	R125 076 121	2	26.4	yes	M05	full crimp type/ single piece body

● upon request

* packaging: 100 pieces. For unit packaging, add "W" after the P/N



STRAIGHT PLUGS SOLDER TYPE FOR SEMI RIGID CABLES

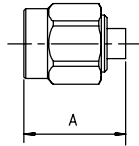
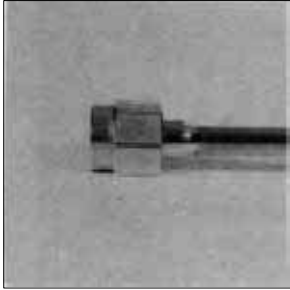


Fig. 1

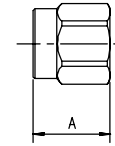


Fig. 2

Cable group	Part number (gold)	Part number (gold/passivated nut)	Fig.	Dimensions A (mm)	Captive center contact	Assembly	Note
.085"	R125 052 000*	R125 052 002	1	11.2	no	M10	single piece body
.085"		R125 052 102●	1	11.2	yes	M12	
.085"	R125 052 500●		1	11.2	no	M12	retractable coupling nut/ single piece body
.141"	R125 054 000	R125 054 002	2	8.5		M09	without center contact
.141"	R125 054 500	R125 054 502●	2	7.5		M09	without center contact/ retractable coupling nut
.141"	R125 055 000*	R125 055 002*	1	11.2	no	M10	single piece body
.141"	R125 055 100●	R125 055 102●	1	11.2	yes	M12	
.141"	R125 055 500		1	11.2	no	M10	retractable coupling nut/ single piece body
.141"	R125 057 000	R125 057 002	1	11.2		M09	without center contact

RIGHT ANGLE PLUGS CRIMP TYPE FOR FLEXIBLE CABLES

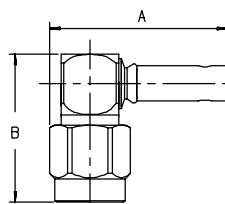


Fig. 1

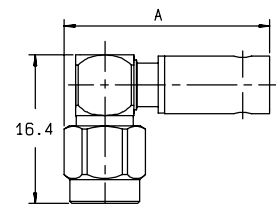


Fig. 2

Cable group	Part number (gold)	Part number (passivated)	Fig.	Dimensions (mm)		Captive center contact	Assembly	Note
				A	B			
2 / 50 / S	R125 170 402		1	19.6	16.85	yes	M11	
2.6 / 50 / S	R125 172 000	R125 172 001*	1	19.6	16.4	yes	M11	single piece body
2.6 / 50 / D	R125 174 000		1	18.6	16.4	yes	M11	
2.6 / 50 / D		R125 174 011	1	18.6	16.85	yes	M11	
5 / 50 / S	R125 175 000	R125 175 001	2	21.8		yes	M11	single piece body
5 / 50 / D	R125 176 000	R125 176 001	2	21.8		yes	M11	

● upon request

* packaging: 100 pieces. For unit packaging, add "W" after the P/N