

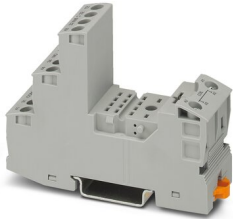
# RIF-2-BSC/4X21 - Relay base



2900932

<https://www.phoenixcontact.com/in/products/2900932>

Please be informed that the data shown in this PDF document is generated from our Online Catalog. Please find the complete data in the user documentation. Our General Terms of Use for Downloads are valid.



RIF-2... relay base, for industrial relay with 2 or 4 changeover contacts, screw connection, plug-in option for input/interference suppression modules, for mounting on NS 35/7,5

## Commercial Data

Item number	2900932
Packing unit	10 pc
Minimum order quantity	10 pc
Sales Key	CK6
Product Key	CK6513
Catalog Page	Page 299 (C-5-2019)
GTIN	4046356733168
Weight per Piece (including packing)	75.3 g
Weight per Piece (excluding packing)	68 g
Customs tariff number	85366990
Country of origin	CN

# RIF-2-BSC/4X21 - Relay base



2900932

<https://www.phoenixcontact.com/in/products/2900932>

## Technical Data

### Product properties

Product type	Relay socket
Product family	RIFLINE complete

### Electrical properties

Nominal voltage $U_N$	250 V AC/DC
Nominal current $I_N$	max. 12 A (Depends on application/assembly)
Protective circuit	depending on the selected input/suppressor modules

### Connection data

Connection method	Screw connection
Stripping length	8 mm
Conductor cross section rigid	0.5 mm <sup>2</sup> ... 4 mm <sup>2</sup>
Conductor cross-section rigid (2 conductors with same cross section)	0.5 mm <sup>2</sup> ... 2.5 mm <sup>2</sup>
Conductor cross section flexible	0.5 mm <sup>2</sup> ... 4 mm <sup>2</sup> 0.5 mm <sup>2</sup> ... 4 mm <sup>2</sup> (Ferrule with plastic sleeve)
Conductor cross section flexible (2 conductors with same cross section)	0.5 mm <sup>2</sup> ... 2.5 mm <sup>2</sup> 0.5 mm <sup>2</sup> ... 1.5 mm <sup>2</sup> (TWIN ferrule with plastic sleeve)
Conductor cross section AWG	20 ... 10 (solid) 20 ... 12 (flexible)
Tightening torque	0.5 Nm ... 0.6 Nm

### Dimensions

Width	27 mm
Height	89 mm
Depth Retaining bracket	75 mm (with retaining bracket)

### Material specifications

Flammability rating according to UL 94	V2 (Housing)
--	--------------

### Environmental and real-life conditions

#### Ambient conditions

Ambient temperature (operation)	-40 °C ... 85 °C (Depends on application/assembly)
Ambient temperature (storage/transport)	-40 °C ... 85 °C

### Approvals

#### Corrosive gas test

Identification	ISA-S71.04. G3 Harsh Group EN 60068-2-60
----------------	---

# RIF-2-BSC/4X21 - Relay base



2900932

<https://www.phoenixcontact.com/in/products/2900932>

## Mounting

Mounting type	DIN rail mounting
Mounting position	any

# RIF-2-BSC/4X21 - Relay base




2900932

<https://www.phoenixcontact.com/in/products/2900932>

## Approvals

 **CSA**  
Approval ID: 76787

 **UL Recognized**  
Approval ID: FILE E 113228

 **EAC**  
Approval ID: RU D-DE.B\*00573/18

 **DNV GL**  
Approval ID: TAA000018V

# RIF-2-BSC/4X21 - Relay base



2900932

<https://www.phoenixcontact.com/in/products/2900932>

## Classifications

### ECLASS

ECLASS-11.0	27371603
ECLASS-12.0	27371603
ECLASS-13.0	27371603

### ETIM

ETIM 8.0	EC001456
----------	----------

### UNSPSC

UNSPSC 21.0	39122300
-------------	----------

# RIF-2-BSC/4X21 - Relay base



2900932

<https://www.phoenixcontact.com/in/products/2900932>

## Environmental Product Compliance

China RoHS	Environmentally friendly use period: unlimited = EFUP-e
	No hazardous substances above threshold values

# RIF-2-BSC/4X21 - Relay base

2900932

<https://www.phoenixcontact.com/in/products/2900932>



## Accessories

### FBS 2-6 - Plug-in bridge

3030336

<https://www.phoenixcontact.com/in/products/3030336>



Plug-in bridge, pitch: 6.2 mm, number of positions: 2, color: red

---

### FBS 2-6 BU - Plug-in bridge

3036932

<https://www.phoenixcontact.com/in/products/3036932>



Plug-in bridge, pitch: 6.2 mm, number of positions: 2, color: blue

## RIF-2-BSC/4X21 - Relay base

2900932

<https://www.phoenixcontact.com/in/products/2900932>



## FBS 2-6 GY - Plug-in bridge

3032237

<https://www.phoenixcontact.com/in/products/3032237>



Plug-in bridge, pitch: 6.2 mm, number of positions: 2, color: gray

---

## STP 5-2 - Marker carriers

0800967

<https://www.phoenixcontact.com/in/products/0800967>



Marker carriers, snaps into STTB 2,5, STTB 4, PTTB 2,5, and PTTB 4 double-level spring-cage terminal blocks, can be marked with UC-TM 5, UC-TMF 5, UCT-TM 5, UCT-TMF 5, ZB 5, or ZBF 5, gray, unlabeled, mounting type: plug in, lettering field size: 5 x 10.5 mm



# RIF-2-BSC/4X21 - Relay base



2900932

<https://www.phoenixcontact.com/in/products/2900932>

## UC-TM 16 - Marker for terminal blocks

0819217

<https://www.phoenixcontact.com/in/products/0819217>



Marker for terminal blocks, Sheet, white, unlabeled, can be labeled with: BLUEMARK ID COLOR, BLUEMARK ID, BLUEMARK CLED, PLOTMARK, CMS-P1-PLOTTER, mounting type: snapped, for terminal block width: 16 mm, lettering field size: 15.45 x 10.5 mm, Number of individual labels: 32

---

## UC-TMF 16 - Marker for terminal blocks

0819262

<https://www.phoenixcontact.com/in/products/0819262>



Marker for terminal blocks, Sheet, white, unlabeled, can be labeled with: BLUEMARK ID COLOR, BLUEMARK ID, BLUEMARK CLED, PLOTMARK, CMS-P1-PLOTTER, mounting type: snapped, for terminal block width: 16 mm, lettering field size: 15.45 x 5.1 mm, Number of individual labels: 32

## RIF-2-BSC/4X21 - Relay base

2900932

<https://www.phoenixcontact.com/in/products/2900932>



## RIF-RH-2 - Retaining bracket

2900954

<https://www.phoenixcontact.com/in/products/2900954>



Relay retaining bracket, with ejector function and holder for marking material, suitable for RIF-2 relay base, for industrial relay

---

## RIF-RHM-2 - Relay retaining bracket

2905984

<https://www.phoenixcontact.com/in/products/2905984>



Relay retaining bracket, wire model, suitable for RIF-2 relay base

## RIF-2-BSC/4X21 - Relay base

2900932

<https://www.phoenixcontact.com/in/products/2900932>



## RIF-LDP-12-24 DC - Plug-in module

2900939

<https://www.phoenixcontact.com/in/products/2900939>



Plug-in module, for mounting on RIF-1, RIF-2, RIF-3, and RIF-4, with freewheeling diode and yellow LED, polarity: A1+, A2-, input voltage: 12 V DC ... 24 V DC  $\pm 30\%$

---

## RIF-LDP-48-60 DC - Plug-in module

2900940

<https://www.phoenixcontact.com/in/products/2900940>



Plug-in module, for mounting on RIF-1, RIF-2, RIF-3, and RIF-4, with freewheeling diode and yellow LED, polarity: A1+, A2-, input voltage: 48 V DC ... 60 V DC  $\pm 20\%$

## RIF-2-BSC/4X21 - Relay base

2900932

<https://www.phoenixcontact.com/in/products/2900932>



## RIF-LDP-110 DC - Plug-in module

2900941

<https://www.phoenixcontact.com/in/products/2900941>



Plug-in module, for mounting on RIF-1, RIF-2, RIF-3, and RIF-4, with freewheeling diode and yellow LED, polarity: A1+, A2-, input voltage: 110 V DC  $\pm 20\%$

---

## RIF-LV-12-24 UC - Plug-in module

2900942

<https://www.phoenixcontact.com/in/products/2900942>



Plug-in module, for mounting on RIF-1, RIF-2, RIF-3, and RIF-4, with varistor and yellow LED, input voltage: 12 V AC ... 24 V AC / DC  $\pm 20\%$

## RIF-2-BSC/4X21 - Relay base

2900932

<https://www.phoenixcontact.com/in/products/2900932>



## RIF-LV-48-60 UC - Plug-in module

2900943

<https://www.phoenixcontact.com/in/products/2900943>



Plug-in module, for mounting on RIF-1, RIF-2, RIF-3, and RIF-4, with varistor and yellow LED, input voltage: 48 V AC ... 60 V AC / DC  $\pm 20$  %

---

## RIF-LV-120-230 AC/110 DC - Plug-in module

2900944

<https://www.phoenixcontact.com/in/products/2900944>



Plug-in module, for mounting on RIF-1, RIF-2, RIF-3, and RIF-4, with varistor and yellow LED, input voltage: 120 V AC... 230 V AC / 110 V DC  $\pm 20$  %

## RIF-2-BSC/4X21 - Relay base

2900932

<https://www.phoenixcontact.com/in/products/2900932>



### RIF-V-12-24 UC - Plug-in module

2900945

<https://www.phoenixcontact.com/in/products/2900945>



Plug-in module, for mounting on RIF-1, RIF-2, RIF-3, and RIF-4, with varistor, input voltage: 12 V AC ... 24 V AC / DC  $\pm$ 20 %

---

### RIF-V-48-60 UC - Plug-in module

2900947

<https://www.phoenixcontact.com/in/products/2900947>



Plug-in module, for mounting on RIF-1, RIF-2, RIF-3, and RIF-4, with varistor, input voltage: 48 V AC ... 60 V AC / DC  $\pm$ 20 %

## RIF-2-BSC/4X21 - Relay base

2900932

<https://www.phoenixcontact.com/in/products/2900932>



## RIF-V-120-230 UC - Plug-in module

2900948

<https://www.phoenixcontact.com/in/products/2900948>



Plug-in module, for mounting on RIF-1, RIF-2, RIF-3, and RIF-4, with varistor, input voltage: 120 V AC ... 230 V AC / DC  $\pm 20\%$

---

## RIF-RC-12-24 UC - Plug-in module

2900949

<https://www.phoenixcontact.com/in/products/2900949>



Plug-in module, for mounting on RIF-1, RIF-2, RIF-3, and RIF-4, with RC element, input voltage: 12 V AC ... 24 V AC / DC  $\pm 20\%$

## RIF-2-BSC/4X21 - Relay base

2900932

<https://www.phoenixcontact.com/in/products/2900932>



## RIF-RC-48-60 UC - Plug-in module

2900950

<https://www.phoenixcontact.com/in/products/2900950>



Plug-in module, for mounting on RIF-1, RIF-2, RIF-3, and RIF-4, with RC element, input voltage: 48 V AC ... 60 V AC / DC  $\pm 20$  %

---

## RIF-RC-120-230 UC - Plug-in module

2900951

<https://www.phoenixcontact.com/in/products/2900951>



Plug-in module, for mounting on RIF-1, RIF-2, RIF-3, and RIF-4, with RC element, input voltage: 120 V AC ... 230 V AC / DC  $\pm 20$  %



## RIF-2-BSC/4X21 - Relay base

2900932

<https://www.phoenixcontact.com/in/products/2900932>



## RIF-T3-24UC - Timer module

2902647

<https://www.phoenixcontact.com/in/products/2902647>



Plug-in module for extending a relay module to create a timer relay, 3 time functions, 4 time ranges, for mounting on RIF-1, RIF-2, RIF-3, and RIF-4, input voltage: 12 V DC ... 24 V DC

---

## REL-IR2/LDP- 12DC/2X21 - Single relay

2903659

<https://www.phoenixcontact.com/in/products/2903659>



Plug-in industrial relay with power contacts, 2 changeover contacts, test button, status LED, freewheeling diode, mechanical switching position indicator, polarity: A1+, A2-, input voltage: 12 V DC

# RIF-2-BSC/4X21 - Relay base

2900932

<https://www.phoenixcontact.com/in/products/2900932>



## REL-IR2/LDP- 24DC/2X21 - Single relay

2903660

<https://www.phoenixcontact.com/in/products/2903660>



Plug-in industrial relay with power contacts, 2 changeover contacts, test button, status LED, freewheeling diode, mechanical switching position indicator, polarity: A1+, A2-, input voltage: 24 V DC

---

## REL-IR2/LDP- 48DC/2X21 - Single relay

2903661

<https://www.phoenixcontact.com/in/products/2903661>



Plug-in industrial relay with power contacts, 2 changeover contacts, test button, status LED, freewheeling diode, mechanical switching position indicator, polarity: A1+, A2-, input voltage: 48 V DC

# RIF-2-BSC/4X21 - Relay base

2900932

<https://www.phoenixcontact.com/in/products/2900932>



## REL-IR2/LDP- 60DC/2X21 - Single relay

2903662

<https://www.phoenixcontact.com/in/products/2903662>



Plug-in industrial relay with power contacts, 2 changeover contacts, test button, status LED, freewheeling diode, mechanical switching position indicator, polarity: A1+, A2-, input voltage: 60 V DC

---

## REL-IR2/LDP-110DC/2X21 - Single relay

2903663

<https://www.phoenixcontact.com/in/products/2903663>



Plug-in industrial relay with power contacts, 2 changeover contacts, test button, status LED, freewheeling diode, mechanical switching position indicator, polarity: A1+, A2-, input voltage: 110 V DC

## RIF-2-BSC/4X21 - Relay base

2900932

<https://www.phoenixcontact.com/in/products/2900932>



## REL-IR2/LDP-220DC/2X21 - Single relay

2903665

<https://www.phoenixcontact.com/in/products/2903665>



Plug-in industrial relay with power contacts, 2 changeover contacts, test button, status LED, freewheeling diode, mechanical switching position indicator, polarity: A1+, A2-, input voltage: 220 V DC

---

## REL-IR2/L- 24AC/2X21 - Single relay

2903666

<https://www.phoenixcontact.com/in/products/2903666>



Plug-in industrial relay with power contacts, 2 changeover contacts, test button, status LED, mechanical switching position indicator, input voltage: 24 V AC

# RIF-2-BSC/4X21 - Relay base

2900932

<https://www.phoenixcontact.com/in/products/2900932>



## REL-IR2/L-120AC/2X21 - Single relay

2903667

<https://www.phoenixcontact.com/in/products/2903667>



Plug-in industrial relay with power contacts, 2 changeover contacts, test button, status LED, mechanical switching position indicator, input voltage: 120 V AC

---

## REL-IR2/L-230AC/2X21 - Single relay

2903668

<https://www.phoenixcontact.com/in/products/2903668>



Plug-in industrial relay with power contacts, 2 changeover contacts, test button, status LED, mechanical switching position indicator, input voltage: 230 V AC

# RIF-2-BSC/4X21 - Relay base

2900932

<https://www.phoenixcontact.com/in/products/2900932>

## REL-IR4/LDP- 12DC/4X21 - Single relay

2903676

<https://www.phoenixcontact.com/in/products/2903676>



Plug-in industrial relay with power contacts and additional hard gold plating, 4 changeover contacts, test button, status LED, freewheeling diode, mechanical switching position indicator, polarity: A1+, A2-, coil voltage: 12 V DC

---

## REL-IR4/LDP- 24DC/4X21 - Single relay

2903677

<https://www.phoenixcontact.com/in/products/2903677>



Plug-in industrial relay with power contacts, 4 changeover contacts, test button, status LED, freewheeling diode, mechanical switching position indicator, polarity: A1+, A2-, input voltage: 24 V DC

# RIF-2-BSC/4X21 - Relay base

2900932

<https://www.phoenixcontact.com/in/products/2900932>



## REL-IR4/LDP- 48DC/4X21 - Single relay

2903678

<https://www.phoenixcontact.com/in/products/2903678>



Plug-in industrial relay with power contacts, 4 changeover contacts, test button, status LED, freewheeling diode, mechanical switching position indicator, polarity: A1+, A2-, coil voltage: 48 V DC

---

## REL-IR4/LDP- 60DC/4X21 - Single relay

2903679

<https://www.phoenixcontact.com/in/products/2903679>



Plug-in industrial relay with power contacts, 4 changeover contacts, test button, status LED, freewheeling diode, mechanical switching position indicator, polarity: A1+, A2-, coil voltage: 60 V DC

# RIF-2-BSC/4X21 - Relay base

2900932

<https://www.phoenixcontact.com/in/products/2900932>



## REL-IR4/LDP-110DC/4X21 - Single relay

2903680

<https://www.phoenixcontact.com/in/products/2903680>



Plug-in industrial relay with power contacts, 4 changeover contacts, test button, status LED, freewheeling diode, mechanical switching position indicator, polarity: A1+, A2-, coil voltage: 110 V DC

---

## REL-IR4/L- 24AC/4X21 - Single relay

2903686

<https://www.phoenixcontact.com/in/products/2903686>



Plug-in industrial relay with power contacts, 4 changeover contacts, test button, status LED, mechanical switching position indicator, coil voltage: 24 V AC



# RIF-2-BSC/4X21 - Relay base

2900932

<https://www.phoenixcontact.com/in/products/2900932>



## REL-IR4/L-120AC/4X21 - Single relay

2903687

<https://www.phoenixcontact.com/in/products/2903687>



Plug-in industrial relay with power contacts, 4 changeover contacts, test button, status LED, mechanical switching position indicator, coil voltage: 120 V AC

---

## REL-IR4/L-230AC/4X21 - Single relay

2903688

<https://www.phoenixcontact.com/in/products/2903688>



Plug-in industrial relay with power contacts, 4 changeover contacts, test button, status LED, mechanical switching position indicator, input voltage: 230 V AC

# RIF-2-BSC/4X21 - Relay base

2900932

<https://www.phoenixcontact.com/in/products/2900932>



## REL-IR4/LDP- 12DC/4X21AU - Single relay

2903669

<https://www.phoenixcontact.com/in/products/2903669>



Plug-in industrial relay with power contacts and additional hard gold plating, 4 changeover contacts, test button, status LED, freewheeling diode, mechanical switching position indicator, polarity: A1+, A2-, coil voltage: 12 V DC

---

## REL-IR4/LDP- 24DC/4X21AU - Single relay

2903670

<https://www.phoenixcontact.com/in/products/2903670>



Plug-in industrial relay with power contacts and additional hard gold plating, 4 changeover contacts, test button, status LED, freewheeling diode, mechanical switching position indicator, polarity: A1+, A2-, coil voltage: 24 V DC

# RIF-2-BSC/4X21 - Relay base

2900932

<https://www.phoenixcontact.com/in/products/2900932>



## REL-IR4/LDP- 48DC/4X21AU - Single relay

2903671

<https://www.phoenixcontact.com/in/products/2903671>



Plug-in industrial relay with power contacts and additional hard gold plating, 4 changeover contacts, test button, status LED, freewheeling diode, mechanical switching position indicator, polarity: A1+, A2-, coil voltage: 48 V DC

---

## REL-IR4/LDP- 60DC/4X21AU - Single relay

2903672

<https://www.phoenixcontact.com/in/products/2903672>



Plug-in industrial relay with power contacts and additional hard gold plating, 4 changeover contacts, test button, status LED, freewheeling diode, mechanical switching position indicator, polarity: A1+, A2-, coil voltage: 60 V DC

# RIF-2-BSC/4X21 - Relay base

2900932

<https://www.phoenixcontact.com/in/products/2900932>



## REL-IR4/LDP-110DC/4X21AU - Single relay

2903673

<https://www.phoenixcontact.com/in/products/2903673>



Plug-in industrial relay with power contacts and additional hard gold plating, 4 changeover contacts, test button, status LED, freewheeling diode, mechanical switching position indicator, polarity: A1+, A2-, coil voltage: 110 V DC

---

## REL-IR4/L- 24AC/4X21AU - Single relay

2903683

<https://www.phoenixcontact.com/in/products/2903683>



Plug-in industrial relay with power contacts and additional hard gold plating, 4 changeover contacts, test button, status LED, mechanical switching position indicator, coil voltage: 24 V AC

# RIF-2-BSC/4X21 - Relay base

2900932

<https://www.phoenixcontact.com/in/products/2900932>



## REL-IR4/L-120AC/4X21AU - Single relay

2903684

<https://www.phoenixcontact.com/in/products/2903684>



Plug-in industrial relay with power contacts and additional hard gold plating, 4 changeover contacts, test button, status LED, mechanical switching position indicator, coil voltage: 120 V AC

---

## REL-IR4/L-230AC/4X21AU - Single relay

2903685

<https://www.phoenixcontact.com/in/products/2903685>



Plug-in industrial relay with power contacts and additional hard gold plating, 4 changeover contacts, test button, status LED, mechanical switching position indicator, coil voltage: 230 V AC

## RIF-2-BSC/4X21 - Relay base

2900932

<https://www.phoenixcontact.com/in/products/2900932>



## REL-IR2/24DC/2X21 - Single relay

2907051

<https://www.phoenixcontact.com/in/products/2907051>



Plug-in industrial relay with power contacts, 2 changeover contacts, test key, mechanical switch position indicator, polarity: bipolar, input voltage: 24 V DC

---

## REL-IR2/100AC/2X21 - Single relay

2907052

<https://www.phoenixcontact.com/in/products/2907052>



Plug-in industrial relay with power contacts, 2 changeover contacts, test key, mechanical switch position indicator, polarity: bipolar, input voltage: 100 V AC

## RIF-2-BSC/4X21 - Relay base

2900932

<https://www.phoenixcontact.com/in/products/2900932>



## REL-IR2/200AC/2X21 - Single relay

2907053

<https://www.phoenixcontact.com/in/products/2907053>



Plug-in industrial relay with power contacts, 2 changeover contacts, test key, mechanical switch position indicator, polarity: bipolar, input voltage: 200 V AC

---

## REL-IR4/24DC/4X21 - Single relay

2907054

<https://www.phoenixcontact.com/in/products/2907054>



Plug-in industrial relay with power contacts, 4 changeover contacts, test key, mechanical switch position indicator, polarity: bipolar, input voltage: 24 V DC

## RIF-2-BSC/4X21 - Relay base

2900932

<https://www.phoenixcontact.com/in/products/2900932>



### REL-IR4/100AC/4X21 - Single relay

2907055

<https://www.phoenixcontact.com/in/products/2907055>



Plug-in industrial relay with power contacts, 4 changeover contacts, test key, mechanical switch position indicator, polarity: bipolar, input voltage: 100 V AC

---

### REL-IR4/200AC/4X21 - Single relay

2907056

<https://www.phoenixcontact.com/in/products/2907056>



Plug-in industrial relay with power contacts, 4 changeover contacts, test key, mechanical switch position indicator, polarity: bipolar, input voltage: 200 V AC



## RIF-2-BSC/4X21 - Relay base

2900932

<https://www.phoenixcontact.com/in/products/2900932>



## NS 35/ 7,5 PERF 2000MM - DIN rail perforated

0801733

<https://www.phoenixcontact.com/in/products/0801733>



DIN rail perforated, acc. to EN 60715, material: Steel, galvanized, passivated with a thick layer, Standard profile, color: silver, Pack of 25 (50 m)

---

## NS 35/ 7,5 UNPERF 2000MM - DIN rail, unperforated

0801681

<https://www.phoenixcontact.com/in/products/0801681>



DIN rail, unperforated, acc. to EN 60715, material: Steel, galvanized, passivated with a thick layer, Standard profile, color: silver, Pack of 25 (50 m)

# RIF-2-BSC/4X21 - Relay base

2900932

<https://www.phoenixcontact.com/in/products/2900932>



## NS 35/ 7,5 WH PERF 2000MM - DIN rail perforated

1204119

<https://www.phoenixcontact.com/in/products/1204119>



DIN rail perforated, acc. to EN 60715, material: Steel, Galvanized, white passivated, Standard profile, color: silver, Pack of 25 (50 m)

---

## NS 35/ 7,5 WH UNPERF 2000MM-VPE 10 - DIN rail, unperforated

1204122

<https://www.phoenixcontact.com/in/products/1204122>



DIN rail, unperforated, acc. to EN 60715, material: Steel, Galvanized, white passivated, Standard profile, color: silver, Pack of 10 (20 m)

## RIF-2-BSC/4X21 - Relay base

2900932

<https://www.phoenixcontact.com/in/products/2900932>



### NS 35/ 7,5 AL UNPERF 2000MM - DIN rail, unperforated

0801704

<https://www.phoenixcontact.com/in/products/0801704>



DIN rail, unperforated, acc. to EN 60715, material: Aluminum, uncoated, Standard profile, color: silver, Pack of 25 (50 m)

---

### NS 35/ 7,5 ZN PERF 2000MM - DIN rail perforated

1206421

<https://www.phoenixcontact.com/in/products/1206421>



DIN rail perforated, acc. to EN 60715, material: Steel, galvanized, Standard profile, color: silver, Pack of 25 (50 m)

# RIF-2-BSC/4X21 - Relay base

2900932

<https://www.phoenixcontact.com/in/products/2900932>



## NS 35/ 7,5 ZN UNPERF 2000MM - DIN rail, unperforated

1206434

<https://www.phoenixcontact.com/in/products/1206434>



DIN rail, unperforated, acc. to EN 60715, material: Steel, galvanized, Standard profile, color: silver, Pack of 25 (50 m)

---

## NS 35/ 7,5 CU UNPERF 2000MM-VPE 10 - DIN rail, unperforated

0801762

<https://www.phoenixcontact.com/in/products/0801762>



DIN rail, unperforated, acc. to EN 60715, material: Copper, uncoated, Standard profile, color: copper-colored, Pack of 10 (20 m)

## RIF-2-BSC/4X21 - Relay base

2900932

<https://www.phoenixcontact.com/in/products/2900932>



## NS 35/ 7,5 CAP - End cap

1206560

<https://www.phoenixcontact.com/in/products/1206560>

DIN rail end piece, for DIN rail NS 35/7.5



---

## NS 35/15 PERF 2000MM - DIN rail perforated

1201730

<https://www.phoenixcontact.com/in/products/1201730>



DIN rail perforated, similar to EN 60715, material: Steel, galvanized, passivated with a thick layer, Standard profile, color: silver, Pack of 25 (50 m)

## RIF-2-BSC/4X21 - Relay base

2900932

<https://www.phoenixcontact.com/in/products/2900932>



## NS 35/15 UNPERF 2000MM - DIN rail, unperforated

1201714

<https://www.phoenixcontact.com/in/products/1201714>



DIN rail, unperforated, similar to EN 60715, material: Steel, galvanized, passivated with a thick layer, Standard profile, color: silver, Pack of 25 (50 m)

---

## NS 35/15 WH PERF 2000MM - DIN rail perforated

0806602

<https://www.phoenixcontact.com/in/products/0806602>



DIN rail perforated, similar to EN 60715, material: Steel, Galvanized, white passivated, Standard profile, color: white, Pack of 25 (50 m)

# RIF-2-BSC/4X21 - Relay base

2900932

<https://www.phoenixcontact.com/in/products/2900932>



## NS 35/15 WH UNPERF 2000MM-VPE 10 - DIN rail, unperforated

1204135

<https://www.phoenixcontact.com/in/products/1204135>



DIN rail, unperforated, similar to EN 60715, material: Steel, Galvanized, white passivated, Standard profile, color: silver, Pack of 10 (20 m)

---

## NS 35/15 AL UNPERF 2000MM - DIN rail, unperforated

1201756

<https://www.phoenixcontact.com/in/products/1201756>



DIN rail, unperforated, similar to EN 60715, material: Aluminum, uncoated, Standard profile, color: silver

# RIF-2-BSC/4X21 - Relay base

2900932

<https://www.phoenixcontact.com/in/products/2900932>



## NS 35/15 ZN PERF 2000MM - DIN rail perforated

1206599

<https://www.phoenixcontact.com/in/products/1206599>



DIN rail perforated, similar to EN 60715, material: Steel, galvanized, Standard profile, color: silver, Pack of 25 (50 m)

---

## NS 35/15 ZN UNPERF 2000MM - DIN rail, unperforated

1206586

<https://www.phoenixcontact.com/in/products/1206586>



DIN rail, unperforated, similar to EN 60715, material: Steel, galvanized, Standard profile, color: silver, Pack of 25 (50 m)



# RIF-2-BSC/4X21 - Relay base

2900932

<https://www.phoenixcontact.com/in/products/2900932>



## NS 35/15 CU UNPERF 2000MM-VPE 10 - DIN rail, unperforated

1201895

<https://www.phoenixcontact.com/in/products/1201895>



DIN rail, unperforated, similar to EN 60715, material: Copper, uncoated, Standard profile, color: copper-colored, Pack of 10 (20 m)

---

## NS 35/15 CAP - End cap

1206573

<https://www.phoenixcontact.com/in/products/1206573>

DIN rail end piece, for DIN rail NS 35/15



# RIF-2-BSC/4X21 - Relay base

2900932

<https://www.phoenixcontact.com/in/products/2900932>



## NS 35/15-2,3 UNPERF 2000MM-VPE 10 - DIN rail, unperforated

1201798

<https://www.phoenixcontact.com/in/products/1201798>



DIN rail, unperforated, acc. to EN 60715, material: Steel, galvanized, passivated with a thick layer, Standard profile 2.3 mm, color: silver, Pack of 10 (20 m)

---

## CLIPFIX 35 - End clamp

3022218

<https://www.phoenixcontact.com/in/products/3022218>



Quick mounting end clamp for NS 35/7,5 DIN rail or NS 35/15 DIN rail, with marking option, width: 9.5 mm, color: gray

## RIF-2-BSC/4X21 - Relay base

2900932

<https://www.phoenixcontact.com/in/products/2900932>



## CLIPFIX 35-5 - End clamp

3022276

<https://www.phoenixcontact.com/in/products/3022276>



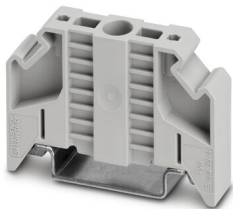
Quick mounting end clamp for NS 35/7,5 DIN rail or NS 35/15 DIN rail, with marking option, with parking option for FBS...5, FBS...6, KSS 5, KSS 6, width: 5.15 mm, color: gray

---

## E/NS 35 N - End clamp

0800886

<https://www.phoenixcontact.com/in/products/0800886>



End clamp, width: 9.5 mm, color: gray

## RIF-2-BSC/4X21 - Relay base

2900932

<https://www.phoenixcontact.com/in/products/2900932>



## MPS-MT - Test plugs

0201744

<https://www.phoenixcontact.com/in/products/0201744>



Test plugs, with solder connection up to 1 mm<sup>2</sup> conductor cross section, number of positions: 1, fuse type: , mounting type: , , color: gray

---

## MPS-IH WH - Insulating sleeve

0201663

<https://www.phoenixcontact.com/in/products/0201663>

Insulating sleeve, fuse type: , mounting type: , , color: white



## RIF-2-BSC/4X21 - Relay base

2900932

<https://www.phoenixcontact.com/in/products/2900932>



## MPS-IH RD - Insulating sleeve

0201676

<https://www.phoenixcontact.com/in/products/0201676>

Insulating sleeve, fuse type: , mounting type: , , color: red



---

## MPS-IH BU - Insulating sleeve

0201689

<https://www.phoenixcontact.com/in/products/0201689>

Insulating sleeve, fuse type: , mounting type: , , color: blue



## RIF-2-BSC/4X21 - Relay base

2900932

<https://www.phoenixcontact.com/in/products/2900932>



## MPS-IH YE - Insulating sleeve

0201692

<https://www.phoenixcontact.com/in/products/0201692>

Insulating sleeve, fuse type: , mounting type: , , color: yellow



---

## MPS-IH GN - Insulating sleeve

0201702

<https://www.phoenixcontact.com/in/products/0201702>

Insulating sleeve, fuse type: , mounting type: , , color: green



## RIF-2-BSC/4X21 - Relay base

2900932

<https://www.phoenixcontact.com/in/products/2900932>



## MPS-IH GY - Insulating sleeve

0201728

<https://www.phoenixcontact.com/in/products/0201728>

Insulating sleeve, fuse type: , mounting type: , , color: gray



---

## MPS-IH BK - Insulating sleeve

0201731

<https://www.phoenixcontact.com/in/products/0201731>

Insulating sleeve, fuse type: , mounting type: , , color: black



# RIF-2-BSC/4X21 - Relay base

2900932

<https://www.phoenixcontact.com/in/products/2900932>



## ZB 5 :UNBEDRUCKT - Zack marker strip

1050004

<https://www.phoenixcontact.com/in/products/1050004>



Zack marker strip, Strip, white, unlabeled, can be labeled with: PLOTMARK, CMS-P1-PLOTTER, mounting type: snapped, for terminal block width: 5.2 mm, lettering field size: 5.1 x 10.5 mm, Number of individual labels: 10

---

## ZB 5 CUS - Zack marker strip

0824962

<https://www.phoenixcontact.com/in/products/0824962>



Zack marker strip, can be ordered: Strip, white, labeled according to customer specifications, mounting type: snap into tall marker groove, for terminal block width: 5.2 mm, lettering field size: 5.15 x 10.5 mm, Number of individual labels: 10



# RIF-2-BSC/4X21 - Relay base

2900932

<https://www.phoenixcontact.com/in/products/2900932>



## ZB 5,LGS:FORTL.ZAHLEN - Zack marker strip

1050017

<https://www.phoenixcontact.com/in/products/1050017>



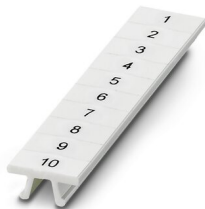
Zack marker strip, Strip, white, labeled, printed horizontally: consecutive numbers 1 ... 10, 11 ... 20, etc. up to 491 ... 500, mounting type: snapped, for terminal block width: 5.2 mm, lettering field size: 5.15 x 10.5 mm, Number of individual labels: 10

---

## ZB 5,QR:FORTL.ZAHLEN - Zack marker strip

1050020

<https://www.phoenixcontact.com/in/products/1050020>



Zack marker strip, white, Printed vertically: consecutive numbers 1 ... 10, 11 ... 20, etc. up to 491 ... 500, mounting type: snapped, for terminal block width: 5.2 mm, lettering field size: 5.15 x 10.5 mm

# RIF-2-BSC/4X21 - Relay base

2900932

<https://www.phoenixcontact.com/in/products/2900932>



## ZB 5,LGS:GLEICHE ZAHLEN - Zack marker strip

1050033

<https://www.phoenixcontact.com/in/products/1050033>



Zack marker strip, Strip, white, labeled, can be labeled with: CMS-P1-PLOTTER, printed horizontally: Identical numbers 1 or 2, etc. up to 100, mounting type: snapped, for terminal block width: 5.2 mm, lettering field size: 5.15 x 10.5 mm, Number of individual labels: 10

---

## ZB 5,LGS:L1-N,PE - Zack marker strip

1050415

<https://www.phoenixcontact.com/in/products/1050415>



Zack marker strip, Strip, white, labeled, horizontal: L1, L2, L3, N, PE, L1, L2, L3, N, PE, mounting type: snapped, for terminal block width: 5.2 mm, lettering field size: 5.15 x 10.5 mm, Number of individual labels: 10

## RIF-2-BSC/4X21 - Relay base

2900932

<https://www.phoenixcontact.com/in/products/2900932>



### UC-TM 5 - Marker for terminal blocks

0818108

<https://www.phoenixcontact.com/in/products/0818108>



Marker for terminal blocks, Sheet, white, unlabeled, can be labeled with: BLUEMARK ID COLOR, BLUEMARK ID, BLUEMARK CLED, PLOTMARK, CMS-P1-PLOTTER, mounting type: snapped, for terminal block width: 5.2 mm, lettering field size: 4.6 x 10.5 mm, Number of individual labels: 96

---

### UC-TM 5 CUS - Marker for terminal blocks

0824581

<https://www.phoenixcontact.com/in/products/0824581>



Marker for terminal blocks, can be ordered: by sheet, white, labeled according to customer specifications, mounting type: snap into tall marker groove, for terminal block width: 5.2 mm, lettering field size: 10.5 x 4.6 mm, Number of individual labels: 96

# RIF-2-BSC/4X21 - Relay base

2900932

<https://www.phoenixcontact.com/in/products/2900932>



## UCT-TM 5 - Marker for terminal blocks

0828734

<https://www.phoenixcontact.com/in/products/0828734>



Marker for terminal blocks, Sheet, white, unlabeled, can be labeled with: TOPMARK NEO, TOPMARK LASER, BLUEMARK ID COLOR, BLUEMARK ID, BLUEMARK CLED, THERMOMARK PRIME, THERMOMARK CARD 2.0, THERMOMARK CARD, mounting type: snapped, for terminal block width: 5.2 mm, lettering field size: 4.6 x 10.5 mm, Number of individual labels: 72

---

## UCT-TM 5 CUS - Marker for terminal blocks

0829595

<https://www.phoenixcontact.com/in/products/0829595>



Marker for terminal blocks, can be ordered: by sheet, white, labeled according to customer specifications, mounting type: snap into tall marker groove, for terminal block width: 5.2 mm, lettering field size: 4.6 x 10.5 mm, Number of individual labels: 72

# RIF-2-BSC/4X21 - Relay base

2900932

<https://www.phoenixcontact.com/in/products/2900932>



## GBS 5-25X12 - Group marker label for terminal marking

0810588

<https://www.phoenixcontact.com/in/products/0810588>



Group marker label, snaps onto terminal center for screw, spring-cage and quick connection terminal blocks, labeled with a 25 x 12 mm label or manually with the B-STIFT, in the foot part with ZB 5

---

## GBS 5-25X5 - Group marker label for terminal marking

0829126

<https://www.phoenixcontact.com/in/products/0829126>



Group marking label, can be snapped into terminal center for screw, spring-cage, push-in, and fast connection terminal blocks, can be labeled with a 24 x 4 mm label or manually using B-STIFT, in the foot part with ZB 5

## RIF-2-BSC/4X21 - Relay base

2900932

<https://www.phoenixcontact.com/in/products/2900932>



## STP 5-2-ZB - Marker carriers

3037643

<https://www.phoenixcontact.com/in/products/3037643>



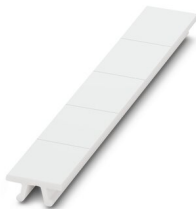
Marker carriers, snaps into ST 2,5 spring-cage terminal blocks, can be marked with UC-TM 5, UC-TMF 5, UCT-TM 5, UCT-TMF 5, ZB 5, or ZBF 5, gray, unlabeled, mounting type: plug in

---

## ZB 15:UNBEDRUCKT - Zack marker strip

0811972

<https://www.phoenixcontact.com/in/products/0811972>



Zack marker strip, Strip, white, unlabeled, can be labeled with: PLOTMARK, CMS-P1-PLOTTER, mounting type: snapped, for terminal block width: 15.2 mm, lettering field size: 10.5 x 15.1 mm, Number of individual labels: 5

# RIF-2-BSC/4X21 - Relay base

2900932

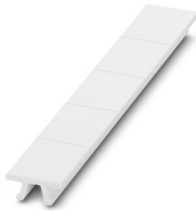
<https://www.phoenixcontact.com/in/products/2900932>



## ZB 15 CUS - Zack marker strip

0824945

<https://www.phoenixcontact.com/in/products/0824945>



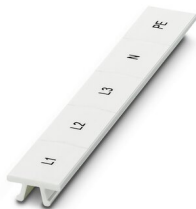
Zack marker strip, can be ordered: Strip, white, labeled according to customer specifications, mounting type: snap into tall marker groove, for terminal block width: 15.2 mm, lettering field size: 10.5 x 15.1 mm, Number of individual labels: 5

---

## ZB 15,LGS:L1-N,PE - Zack marker strip

0811998

<https://www.phoenixcontact.com/in/products/0811998>



Zack marker strip, Strip, white, labeled, printed horizontally: L1, L2, L3, N, PE, mounting type: snapped, for terminal block width: 15.2 mm, lettering field size: 10.5 x 15.1 mm, Number of individual labels: 5

---

Phoenix Contact 2023 © - all rights reserved  
<https://www.phoenixcontact.com>

PHOENIX CONTACT (I) Pvt. Ltd.  
A-58/2, Okhla Industrial Area, Phase - II, New Delhi-110 020

+91.1275.71420  
[info@phoenixcontact.co.in](mailto:info@phoenixcontact.co.in)