

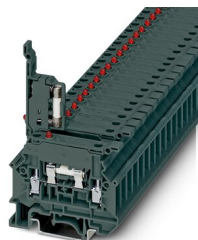
TB 4-HESILED 24 (5X20) EI - Fuse modular terminal block



3075799

<https://www.phoenixcontact.com/in/products/3075799>

Please be informed that the data shown in this PDF document is generated from our Online Catalog. Please find the complete data in the user documentation. Our General Terms of Use for Downloads are valid.



Fuse modular terminal block, fuse type: G / 5 x 20, nom. voltage: 24 V, nominal current: 6.3 A, connection method: Screw connection, cross section: 0.5 mm²- 6 mm², mounting type: NS 35/7,5, NS 35/15, NS 32, color: dark gray

Commercial Data

Item number	3075799
Packing unit	1 pc
Minimum order quantity	1 pc
Sales Key	BE1
Product Key	BE1434
GTIN	4046356528849
Weight per Piece (including packing)	14.125 g
Weight per Piece (excluding packing)	14.125 g
Country of origin	IN

TB 4-HESILED 24 (5X20) EI - Fuse modular terminal block



3075799

<https://www.phoenixcontact.com/in/products/3075799>

Technical Data

Product properties

Product type	Fuse terminal block
Number of connections	2
Number of rows	1
Potentials	1

Insulation characteristics

Overvoltage category	III
Degree of pollution	3

Electrical properties

Rated surge voltage	6 kV
Maximum power dissipation for nominal condition	1.31 W
Fuse	G / 5 x 20

Connection data

Level 1 above 1 below 1

Screw thread	M3
Tightening torque	0.5 ... 0.6 Nm
Stripping length	8 mm
Connection in acc. with standard	IEC 60947-7-3
Conductor cross section rigid	0.5 mm ² ... 6 mm ²
Cross section AWG	20 ... 10 (converted acc. to IEC)
Conductor cross section flexible	0.5 mm ² ... 4 mm ²
Conductor cross section, flexible [AWG]	20 ... 12 (converted acc. to IEC)
Conductor cross-section flexible (ferrule without plastic sleeve)	0.5 mm ² ... 2.5 mm ²
Flexible conductor cross section (ferrule with plastic sleeve)	0.5 mm ² ... 1.5 mm ²
2 conductors with same cross section, solid	0.5 mm ² ... 1.5 mm ²
2 conductors with same cross section, flexible	0.5 mm ² ... 1.5 mm ²
2 conductors with same cross section, flexible, with ferrule without plastic sleeve	0.5 mm ² ... 1.5 mm ²
2 conductors with the same cross section, flexible, with TWIN ferrule with plastic sleeve	0.5 mm ² ... 1.5 mm ²
Nominal current	6.3 A (the current is determined by the fuse used)
Maximum load current	6.3 A
Nominal voltage	24 V

Dimensions

Width	8.2 mm
Height NS 35/15	57.5 mm
Height NS 35/7,5	50 mm
Height NS 32	55 mm

TB 4-HESILED 24 (5X20) EI - Fuse modular terminal block



3075799

<https://www.phoenixcontact.com/in/products/3075799>

Length	58 mm
--------	-------

Material specifications

Color	dark gray
Flammability rating according to UL 94	V2
Insulating material group	I
Insulating material	PA

Mechanical properties

Mechanical data

Open side panel	Yes
-----------------	-----

Environmental and real-life conditions

Ambient conditions

Ambient temperature (operation)	-60 °C ... 105 °C (max. short-term operating temperature RTI Elec.)
Ambient temperature (storage/transport)	-25 °C ... 60 °C (for a short time, not exceeding 24 h, -60 °C to +70 °C)
Ambient temperature (assembly)	-5 °C ... 70 °C
Ambient temperature (actuation)	-5 °C ... 70 °C
Permissible humidity (storage/transport)	30 % ... 70 %

Standards and regulations

Connection in acc. with standard	IEC 60947-7-3
----------------------------------	---------------

Mounting

Mounting type	NS 35/7,5
	NS 35/15
	NS 32

TB 4-HESILED 24 (5X20) EI - Fuse modular terminal block

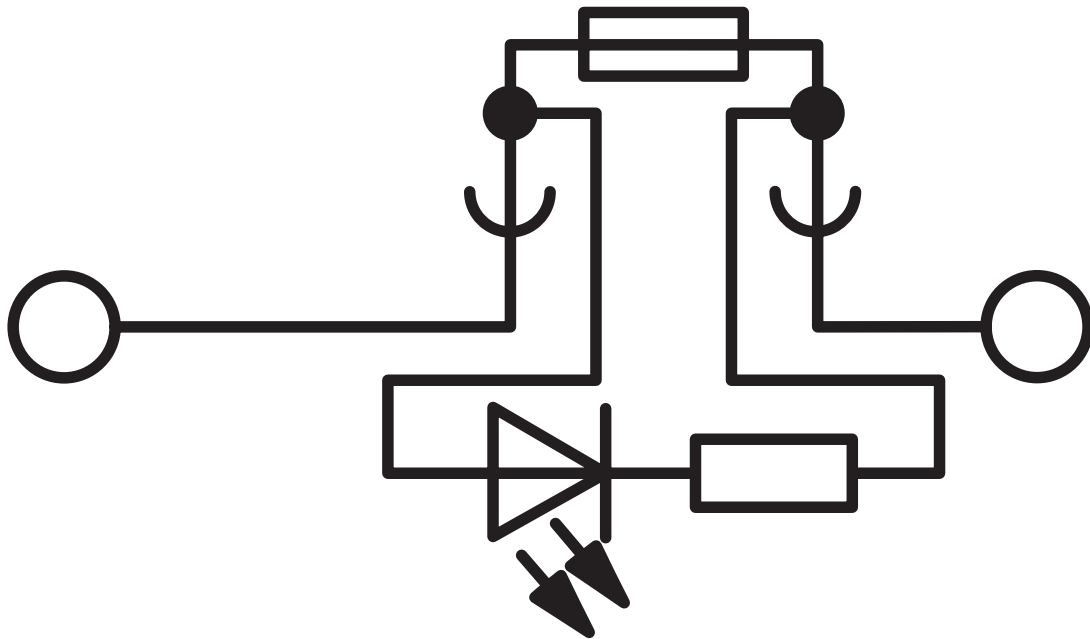


3075799

<https://www.phoenixcontact.com/in/products/3075799>

Drawings

Circuit diagram



TB 4-HESILED 24 (5X20) EI - Fuse modular terminal block



3075799

<https://www.phoenixcontact.com/in/products/3075799>

Approvals



EAC

Approval ID: RU C-DE.A*30.B.01742



cULus Recognized

Approval ID: E60425

	Nominal Voltage U_N	Nominal Current I_N	Cross Section AWG	Cross Section mm^2
	600 V	6.3 A	20 - 10	-
	600 V	6.3 A	20 - 10	-

TB 4-HESILED 24 (5X20) EI - Fuse modular terminal block



3075799

<https://www.phoenixcontact.com/in/products/3075799>

Classifications

ECLASS

ECLASS-11.0	27141116
ECLASS-12.0	27141116
ECLASS-13.0	27250113

ETIM

ETIM 7.0	EC000899
----------	----------

UNSPSC

UNSPSC 21.0	39121410
-------------	----------

TB 4-HESILED 24 (5X20) EI - Fuse modular terminal block



3075799

<https://www.phoenixcontact.com/in/products/3075799>

Environmental Product Compliance

REACH SVHC	Lead 7439-92-1
China RoHS	Environmentally Friendly Use Period = 50 years
	For information on hazardous substances, refer to the manufacturer's declaration available under "Downloads"

TB 4-HESILED 24 (5X20) EI - Fuse modular terminal block



3075799

<https://www.phoenixcontact.com/in/products/3075799>

Accessories

INBS 10-8 - Insertion bridge

3247159

<https://www.phoenixcontact.com/in/products/3247159>



Insertion bridge, Bridging in the terminal point, number of positions: 10, color: dark gray

SZS 0,6X3,5 VDE - Screwdriver

1212602

<https://www.phoenixcontact.com/in/products/1212602>



Screwdriver, slot-headed, VDE insulated, size: 0.6 x 3.5 x 100 mm, 2-component grip, with non-slip grip

TB 4-HESILED 24 (5X20) EI - Fuse modular terminal block

3075799

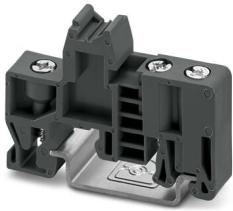
<https://www.phoenixcontact.com/in/products/3075799>

E/TB - End clamp

3246966

<https://www.phoenixcontact.com/in/products/3246966>

End clamp, for assembly on NS 32 or NS 35/7.5 DIN rail



NS 32 PERF 2000MM-VPE 10 - DIN rail perforated

1201002

<https://www.phoenixcontact.com/in/products/1201002>



DIN rail perforated, acc. to EN 60715, material: Steel, galvanized, passivated with a thick layer, G profile, color: silver, Pack of 10 (20 m)

TB 4-HESILED 24 (5X20) EI - Fuse modular terminal block



3075799

<https://www.phoenixcontact.com/in/products/3075799>

NS 32 UNPERF 2000MM-VPE 10 - DIN rail, unperforated

1201015

<https://www.phoenixcontact.com/in/products/1201015>



DIN rail, unperforated, acc. to EN 60715, material: Steel, galvanized, passivated with a thick layer, G profile, color: silver, Pack of 10 (20 m)

Phoenix Contact 2023 © - all rights reserved

<https://www.phoenixcontact.com>

PHOENIX CONTACT (I) Pvt. Ltd.

A-58/2, Okhla Industrial Area, Phase - II, New Delhi-110 020

+91.1275.71420

info@phoenixcontact.co.in