

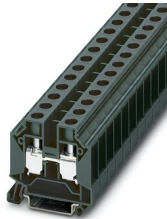
TB 16 EI - Feed-through terminal block



5792172

<https://www.phoenixcontact.com/in/products/5792172>

Please be informed that the data shown in this PDF document is generated from our Online Catalog. Please find the complete data in the user documentation. Our General Terms of Use for Downloads are valid.



Feed-through terminal block, nom. voltage: 1000 V, nominal current: 76 A, number of connections: 2, number of positions: 1, connection method: Screw connection, Rated cross section: 16 mm², cross section: 6 mm² - 16 mm², mounting type: NS 35/7,5, NS 35/15, NS 32, color: dark gray

Commercial Data

Item number	5792172
Packing unit	1 pc
Minimum order quantity	1 pc
Sales Key	BE1
Product Key	BE1411
GTIN	4046356501736
Weight per Piece (including packing)	25.422 g
Weight per Piece (excluding packing)	25.422 g
Customs tariff number	39269098
Country of origin	IN

Technical Data

Notes

General

Note	For a reliable contact of multi stranded conductors it is recommended to untwist multi stranded conductors.
------	---

Product properties

Product type	Feed-through terminal block
Number of positions	1
Number of connections	2
Number of rows	1
Potentials	1

Insulation characteristics

Overvoltage category	III
Degree of pollution	3

Electrical properties

Rated surge voltage	8 kV
Maximum power dissipation for nominal condition	2.43 W

Connection data

Number of connections per level	2
Nominal cross section	16 mm ²

Level 1 above 1 below 1

Screw thread	M4
Tightening torque	2.5 ... 3 Nm
Stripping length	12 mm
Connection in acc. with standard	IEC 60947-7-1
Conductor cross section rigid	6 mm ² ... 16 mm ²
Cross section AWG	10 ... 6 (converted acc. to IEC)
Conductor cross section flexible	6 mm ² ... 16 mm ²
Conductor cross section, flexible [AWG]	10 ... 6 (converted acc. to IEC)
Conductor cross-section flexible (ferrule without plastic sleeve)	6 mm ² ... 16 mm ²
Flexible conductor cross section (ferrule with plastic sleeve)	6 mm ² ... 16 mm ²
Cross-section with insertion bridge, rigid	16 mm ²
Cross-section with insertion bridge, flexible	16 mm ²
2 conductors with same cross section, solid	4 mm ² ... 10 mm ²
2 conductors with same cross section, flexible	4 mm ² ... 10 mm ²
2 conductors with same cross section, flexible, with ferrule without plastic sleeve	4 mm ² ... 6 mm ²
Nominal current	76 A

TB 16 EI - Feed-through terminal block



5792172

<https://www.phoenixcontact.com/in/products/5792172>

Maximum load current	76 A
Nominal voltage	1000 V
Note	Checked at 1100 V
Nominal cross section	16 mm ²

Dimensions

Width	12.2 mm
End cover width	1.5 mm
Height NS 35/15	58 mm
Height NS 35/7,5	50.5 mm
Height	2.126 "
Height NS 32	55.5 mm
Length	51 mm

Material specifications

Color	dark gray
Flammability rating according to UL 94	V2
Insulating material group	I
Insulating material	PA
Static insulating material application in cold	-60 °C
Relative insulation material temperature index (Elec., UL 746 B)	125 °C

Electrical tests

Surge voltage test

Test voltage setpoint	8 kV
Result	Test passed

Temperature-rise test

Requirement temperature-rise test	Increase in temperature ≤ 45 K
Result	Test passed
	Test passed
Short-time withstand current 16 mm ²	1.92 kA
Result	Test passed

Power-frequency withstand voltage

Test voltage setpoint	2.2 kV
Result	Test passed

Mechanical properties

Mechanical data

Open side panel	Yes
-----------------	-----

Mechanical tests

Mechanical strength

TB 16 EI - Feed-through terminal block



5792172

<https://www.phoenixcontact.com/in/products/5792172>

Result	Test passed
--------	-------------

Attachment on the carrier

DIN rail/fixing support	NS 35
Test force setpoint	5 N
Result	Test passed

Test for conductor damage and slackening

Rotation speed	10 rpm
Revolutions	135
Conductor cross section/weight	6 mm ² / 1.4 kg
	16 mm ² / 2.9 kg
Result	Test passed

Environmental and real-life conditions

Needle-flame test

Time of exposure	30 s
Result	Test passed

Oscillation/broadband noise

Specification	DIN EN 50155 (VDE 0115-200):2008-03 (in parts)
Spectrum	Service life test category 2, bogie-mounted
Frequency	5 - 250 Hz
ASD level	6.12 (m/s ²) ² /Hz
Acceleration	3.12g
Test duration per axis	5 h
Test directions	X-, Y- and Z-axis
Result	Test passed

Shocks

Specification	DIN EN 50155 (VDE 0115-200):2008-03 (in parts)
Pulse shape	Semi-sinusoidal
Acceleration	30g
Shock duration	18 ms
Number of shocks per direction	3
Test directions	X-, Y- and Z-axis (pos. and neg.)
Result	Test passed

Ambient conditions

Ambient temperature (operation)	-60 °C ... 105 °C (max. short-term operating temperature RTI Elec.)
Ambient temperature (storage/transport)	-25 °C ... 60 °C (for a short time, not exceeding 24 h, -60 °C to +70 °C)
Ambient temperature (assembly)	-5 °C ... 70 °C
Ambient temperature (actuation)	-5 °C ... 70 °C
Permissible humidity (storage/transport)	30 % ... 70 %

TB 16 EI - Feed-through terminal block



5792172

<https://www.phoenixcontact.com/in/products/5792172>

Standards and regulations

Connection in acc. with standard	IEC 60947-7-1
----------------------------------	---------------

Mounting

Mounting type	NS 35/7,5
	NS 35/15
	NS 32

TB 16 EI - Feed-through terminal block

5792172

<https://www.phoenixcontact.com/in/products/5792172>



Drawings

Circuit diagram



TB 16 EI - Feed-through terminal block



5792172

<https://www.phoenixcontact.com/in/products/5792172>

Approvals



EAC

Approval ID: RU C-DE.A*30.B.01742



UL Recognized

Approval ID: E60425

	Nominal Voltage U_N	Nominal Current I_N	Cross Section AWG	Cross Section mm^2
	600 V	76 A	10 - 4	-
	600 V	76 A	10 - 4	-

TB 16 EI - Feed-through terminal block



5792172

<https://www.phoenixcontact.com/in/products/5792172>

Classifications

ECLASS

ECLASS-11.0	27141120
-------------	----------

TB 16 EI - Feed-through terminal block



5792172

<https://www.phoenixcontact.com/in/products/5792172>

Environmental Product Compliance

China RoHS	Environmentally friendly use period: unlimited = EFUP-e No hazardous substances above threshold values
------------	---

TB 16 EI - Feed-through terminal block

5792172

<https://www.phoenixcontact.com/in/products/5792172>

Accessories

SCBI 10-12 - Screw bridge

3246159

<https://www.phoenixcontact.com/in/products/3246159>



Screw bridge, with insulating collar, number of positions: 10, color: silver

INB 10-12 - Insertion bridge

3246214

<https://www.phoenixcontact.com/in/products/3246214>



Insertion bridge, Bridging in the terminal point, pitch: 12 mm, number of positions: 10, color: gray

TB 16 EI - Feed-through terminal block

5792172

<https://www.phoenixcontact.com/in/products/5792172>

D-TB 16 E - End cover

5793004

<https://www.phoenixcontact.com/in/products/5793004>



End cover, length: 50 mm, width: 2.2 mm, height: 42.8 mm, color: dark gray

TPS 4/7/6 - Female test connector

3246243

<https://www.phoenixcontact.com/in/products/3246243>



Female test connector, for 4 mm test plugs, for screwing into the bridge shaft, number of positions: 1, fuse type: , mounting type: , , color: silver

TB 16 EI - Feed-through terminal block

5792172

<https://www.phoenixcontact.com/in/products/5792172>

SZS 1,0X6,5 VDE - Screwdriver

1205079

<https://www.phoenixcontact.com/in/products/1205079>



Screwdriver, slot-headed, VDE insulated, size: 1.0 x 6.5 x 150 mm, 2-component grip, with non-slip grip

E/TB - End clamp

3246966

<https://www.phoenixcontact.com/in/products/3246966>



End clamp, for assembly on NS 32 or NS 35/7.5 DIN rail

TB 16 EI - Feed-through terminal block

5792172

<https://www.phoenixcontact.com/in/products/5792172>



NS 32 PERF 2000MM-VPE 10 - DIN rail perforated

1201002

<https://www.phoenixcontact.com/in/products/1201002>



DIN rail perforated, acc. to EN 60715, material: Steel, galvanized, passivated with a thick layer, G profile, color: silver, Pack of 10 (20 m)

NS 32 UNPERF 2000MM-VPE 10 - DIN rail, unperforated

1201015

<https://www.phoenixcontact.com/in/products/1201015>



DIN rail, unperforated, acc. to EN 60715, material: Steel, galvanized, passivated with a thick layer, G profile, color: silver, Pack of 10 (20 m)

TB 16 EI - Feed-through terminal block

5792172

<https://www.phoenixcontact.com/in/products/5792172>



PS-MT - Test plugs

0311647

<https://www.phoenixcontact.com/in/products/0311647>



Test plugs, number of positions: 1, fuse type: , mounting type: , , color: silver

PS-IH WH - Insulating sleeve

0311566

<https://www.phoenixcontact.com/in/products/0311566>



Insulating sleeve, number of positions: 1, fuse type: , mounting type: , , color: white

TB 16 EI - Feed-through terminal block

5792172

<https://www.phoenixcontact.com/in/products/5792172>

PS-IH RD - Insulating sleeve

0311579

<https://www.phoenixcontact.com/in/products/0311579>



Insulating sleeve, number of positions: 1, fuse type: , mounting type: , , color: red

PS-IH BU - Insulating sleeve

0311582

<https://www.phoenixcontact.com/in/products/0311582>



Insulating sleeve, number of positions: 1, fuse type: , mounting type: , , color: blue

TB 16 EI - Feed-through terminal block

5792172

<https://www.phoenixcontact.com/in/products/5792172>

PS-IH YE - Insulating sleeve

0311595

<https://www.phoenixcontact.com/in/products/0311595>



Insulating sleeve, number of positions: 1, fuse type: , mounting type: , , color: yellow

PS-IH GN - Insulating sleeve

0311605

<https://www.phoenixcontact.com/in/products/0311605>



Insulating sleeve, number of positions: 1, fuse type: , mounting type: , , color: green

TB 16 EI - Feed-through terminal block

5792172

<https://www.phoenixcontact.com/in/products/5792172>



PS-IH GY - Insulating sleeve

0311621

<https://www.phoenixcontact.com/in/products/0311621>



Insulating sleeve, number of positions: 1, fuse type: , mounting type: , , color: gray

PS-IH BK - Insulating sleeve

0311634

<https://www.phoenixcontact.com/in/products/0311634>



Insulating sleeve, number of positions: 1, fuse type: , mounting type: , , color: black

TB 16 EI - Feed-through terminal block

5792172

<https://www.phoenixcontact.com/in/products/5792172>



PS-IH VT - Insulating sleeve

0311618

<https://www.phoenixcontact.com/in/products/0311618>



Insulating sleeve, number of positions: 1, fuse type: , mounting type: , , color: violet

Phoenix Contact 2023 © - all rights reserved

<https://www.phoenixcontact.com>

PHOENIX CONTACT (I) Pvt. Ltd.

A-58/2, Okhla Industrial Area, Phase - II, New Delhi-110 020

+91.1275.71420

info@phoenixcontact.co.in