

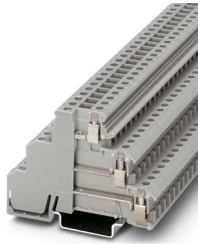
DIKD 1,5 - Sensor/actuator terminal block



2715979

<https://www.phoenixcontact.com/in/products/2715979>

Please be informed that the data shown in this PDF document is generated from our Online Catalog. Please find the complete data in the user documentation. Our General Terms of Use for Downloads are valid.



Sensor/actuator terminal block, nom. voltage: 250 V, nominal current: 24 A, connection method: Screw connection, 1st, 2nd and 3rd level, Rated cross section: 2.5 mm², cross section: 0.2 mm² - 4 mm², mounting type: NS 35/7,5, NS 35/15, color: gray

Your advantages

- The first initiator can also be connected to this three-conductor feed-through terminal block
- The positive and negative potential can be supplied to the insertion bridges via this power terminal block

Commercial Data

Item number	2715979
Packing unit	50 pc
Minimum order quantity	50 pc
Sales Key	BE1
Product Key	BE1217
Catalog Page	Page 481 (C-1-2019)
GTIN	4017918061722
Weight per Piece (including packing)	19.977 g
Weight per Piece (excluding packing)	19 g
Customs tariff number	85369010
Country of origin	IN

DIKD 1,5 - Sensor/actuator terminal block



2715979

<https://www.phoenixcontact.com/in/products/2715979>

Technical Data

Product properties

Product type	Sensor/actuator terminal block
Number of connections	6
Number of rows	3
Potentials	3

Insulation characteristics

Overvoltage category	III
Degree of pollution	3

Electrical properties

Rated surge voltage	4 kV
Maximum power dissipation for nominal condition	0.77 W

Connection data

Number of connections per level	2
Nominal cross section	2.5 mm ²

1st, 2nd and 3rd level

Screw thread	M3
Tightening torque	0.5 ... 0.6 Nm
Stripping length	8 mm
Internal cylindrical gage	A3
Connection in acc. with standard	IEC 60947-7-1
Conductor cross section rigid	0.2 mm ² ... 4 mm ²
Cross section AWG	24 ... 12 (converted acc. to IEC)
Conductor cross section flexible	0.2 mm ² ... 2.5 mm ²
Conductor cross section, flexible [AWG]	24 ... 14 (converted acc. to IEC)
Conductor cross-section flexible (ferrule without plastic sleeve)	0.25 mm ² ... 2.5 mm ²
Flexible conductor cross section (ferrule with plastic sleeve)	0.25 mm ² ... 2.5 mm ²
Cross-section with insertion bridge, rigid	4 mm ²
Cross-section with insertion bridge, flexible	2.5 mm ²
2 conductors with same cross section, solid	0.2 mm ² ... 1 mm ²
2 conductors with same cross section, flexible	0.2 mm ² ... 1 mm ²
2 conductors with same cross section, flexible, with ferrule without plastic sleeve	0.25 mm ² ... 1 mm ²
2 conductors with the same cross section, flexible, with TWIN ferrule with plastic sleeve	0.5 mm ² ... 1 mm ²
Nominal current	24 A
Maximum load current	30 A (with 4 mm ² conductor cross section)
Nominal voltage	250 V
Nominal cross section	2.5 mm ²

DIKD 1,5 - Sensor/actuator terminal block



2715979

<https://www.phoenixcontact.com/in/products/2715979>

Dimensions

Width	6.2 mm
Height NS 35/15	62 mm
Height NS 35/7,5	54.5 mm
Height	2.146 "
Length	72.5 mm

Material specifications

Color	gray
Flammability rating according to UL 94	V2
Insulating material group	I
Insulating material	PA
Static insulating material application in cold	-40 °C
Temperature index of insulation material (DIN EN 60216-1 (VDE 0304-21))	125 °C
Relative insulation material temperature index (Elec., UL 746 B)	125 °C

Electrical tests

Surge voltage test

Result	Test passed
--------	-------------

Temperature-rise test

Requirement temperature-rise test	Increase in temperature ≤ 45 K
Result	Test passed
Short-time withstand current 2.5 mm ²	0.3 kA
	0.3 kA
	0.3 kA
Result	Test passed

Power-frequency withstand voltage

Test voltage setpoint	1.5 kV
Result	Test passed

Mechanical properties

Mechanical data

Open side panel	No
-----------------	----

Mechanical tests

Mechanical strength

Result	Test passed
--------	-------------

Attachment on the carrier

DIN rail/fixing support	NS 35
Test force setpoint	1 N

DIKD 1,5 - Sensor/actuator terminal block



2715979

<https://www.phoenixcontact.com/in/products/2715979>

Result	Test passed
Test for conductor damage and slackening	
Rotation speed	10 (+/- 2) rpm
Revolutions	135
Conductor cross section/weight	0.2 mm ² / 0.2 kg
	2.5 mm ² / 0.7 kg
	4 mm ² / 0.9 kg
Result	Test passed

Environmental and real-life conditions

Needle-flame test

Time of exposure	30 s
Result	Test passed

Oscillation/broadband noise

Specification	DIN EN 50155 (VDE 0115-200):2018-05
---------------	-------------------------------------

Shocks

Test directions	X-, Y- and Z-axis (pos. and neg.)
-----------------	-----------------------------------

Ambient conditions

Ambient temperature (operation)	-60 °C ... 105 °C (max. short-term operating temperature RTI Elec.)
Ambient temperature (storage/transport)	-25 °C ... 60 °C (for a short time, not exceeding 24 h, -60 °C to +70 °C)
Ambient temperature (assembly)	-5 °C ... 70 °C
Ambient temperature (actuation)	-5 °C ... 70 °C
Permissible humidity (storage/transport)	30 % ... 70 %

Standards and regulations

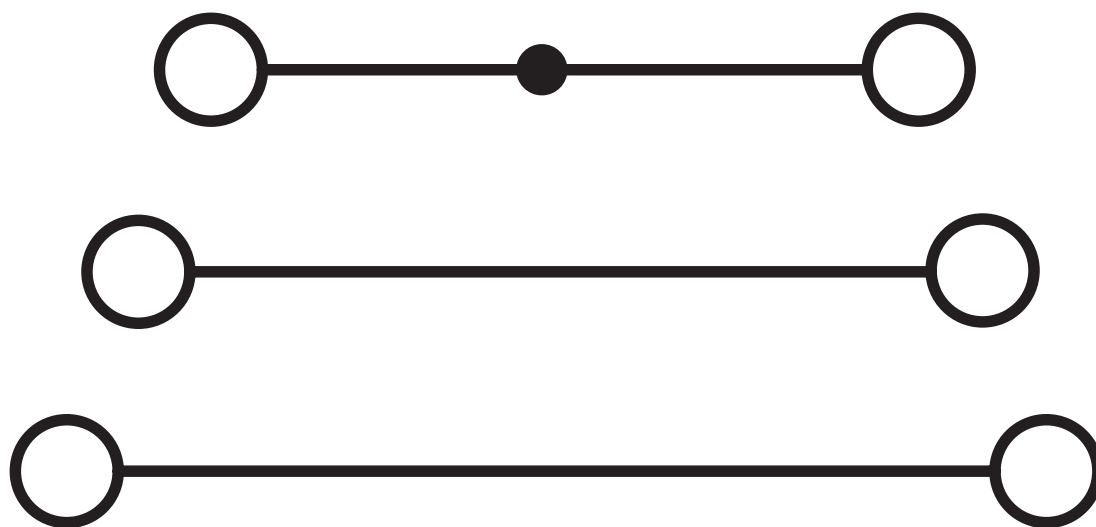
Connection in acc. with standard	IEC 60947-7-1
----------------------------------	---------------

Mounting

Mounting type	NS 35/7,5
	NS 35/15

Drawings

Circuit diagram



DIKD 1,5 - Sensor/actuator terminal block





2715979

<https://www.phoenixcontact.com/in/products/2715979>

Approvals

 CSA Approval ID: 13631				
	Nominal Voltage U_N	Nominal Current I_N	Cross Section AWG	Cross Section mm^2
	300 V	15 A	28 - 14	-

 EAC Approval ID: RU C-DE.BL08.B.00534				
---	--	--	--	--

 cULus Recognized Approval ID: E60425				
	Nominal Voltage U_N	Nominal Current I_N	Cross Section AWG	Cross Section mm^2
	300 V	15 A	30 - 14	-
	-	-	30 - 14	-
	150 V	15 A	30 - 14	-
	-	-	30 - 14	-
	300 V	10 A	30 - 14	-

DIKD 1,5 - Sensor/actuator terminal block



2715979

<https://www.phoenixcontact.com/in/products/2715979>

Classifications

ECLASS

ECLASS-11.0	27141128
ECLASS-12.0	27141128
ECLASS-13.0	27250112

ETIM

ETIM 8.0	EC000900
----------	----------

UNSPSC

UNSPSC 21.0	39121400
-------------	----------

DIKD 1,5 - Sensor/actuator terminal block



2715979

<https://www.phoenixcontact.com/in/products/2715979>

Environmental Product Compliance


China RoHS	Environmentally friendly use period: unlimited = EFUP-e
	No hazardous substances above threshold values

DIKD 1,5 - Sensor/actuator terminal block

2715979

<https://www.phoenixcontact.com/in/products/2715979>

Accessories

 Note: Applying some accessories below might limit this product.

FBI 100- 6 - Fixed bridge

0201650

<https://www.phoenixcontact.com/in/products/0201650>



Fixed bridge, pitch: 6.2 mm, number of positions: 100, color: silver

FBI 10- 6 - Fixed bridge

0203250

<https://www.phoenixcontact.com/in/products/0203250>



Fixed bridge, pitch: 6.2 mm, number of positions: 10, color: silver

 Max. current carrying capacity: 24 A

DIKD 1,5 - Sensor/actuator terminal block

2715979

<https://www.phoenixcontact.com/in/products/2715979>



FBI 20- 6 - Fixed bridge

0201867

<https://www.phoenixcontact.com/in/products/0201867>



Fixed bridge, pitch: 6.2 mm, number of positions: 20, color: silver


EB 80- DIK RD - Insertion bridge

2715953

<https://www.phoenixcontact.com/in/products/2715953>



Insertion bridge, pitch: 6.2 mm, number of positions: 80, color: red

 Max. current carrying capacity: 24 A

DIKD 1,5 - Sensor/actuator terminal block

2715979

<https://www.phoenixcontact.com/in/products/2715979>




EB 80- DIK BU - Insertion bridge

2715940

<https://www.phoenixcontact.com/in/products/2715940>



Insertion bridge, pitch: 6.2 mm, number of positions: 80, color: blue

 Max. current carrying capacity: 24 A

EB 10- DIK RD - Insertion bridge

2716774

<https://www.phoenixcontact.com/in/products/2716774>



Insertion bridge, pitch: 6.15 mm, number of positions: 10, color: red

DIKD 1,5 - Sensor/actuator terminal block

2715979

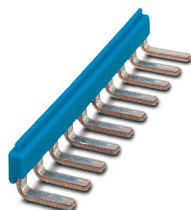
<https://www.phoenixcontact.com/in/products/2715979>



EB 10- DIK BU - Insertion bridge

2716680

<https://www.phoenixcontact.com/in/products/2716680>



Insertion bridge, pitch: 6.15 mm, number of positions: 10, color: blue

EB 10- DIK GY - Insertion bridge

2715937

<https://www.phoenixcontact.com/in/products/2715937>



Insertion bridge, pitch: 6.15 mm, number of positions: 10, color: gray

DIKD 1,5 - Sensor/actuator terminal block

2715979

<https://www.phoenixcontact.com/in/products/2715979>



EB 80- DIK WH - Insertion bridge

2715788

<https://www.phoenixcontact.com/in/products/2715788>



Insertion bridge, pitch: 6.15 mm, number of positions: 80, color: white

EB 5- DIK BU - Insertion bridge

2716677

<https://www.phoenixcontact.com/in/products/2716677>



Insertion bridge, pitch: 6.15 mm, number of positions: 5, color: blue

DIKD 1,5 - Sensor/actuator terminal block

2715979

<https://www.phoenixcontact.com/in/products/2715979>



EB 4- DIK BU - Insertion bridge

2716664

<https://www.phoenixcontact.com/in/products/2716664>

Insertion bridge, pitch: 6.15 mm, number of positions: 4, color: blue



EB 3- DIK BU - Insertion bridge

2716651

<https://www.phoenixcontact.com/in/products/2716651>

Insertion bridge, pitch: 6.15 mm, number of positions: 3, color: blue



DIKD 1,5 - Sensor/actuator terminal block

2715979

<https://www.phoenixcontact.com/in/products/2715979>

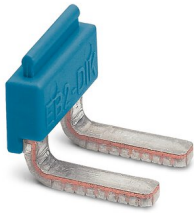


EB 2- DIK BU - Insertion bridge

2716648

<https://www.phoenixcontact.com/in/products/2716648>

Insertion bridge, pitch: 6.15 mm, number of positions: 2, color: blue



EB 5- DIK RD - Insertion bridge

2716761

<https://www.phoenixcontact.com/in/products/2716761>

Insertion bridge, pitch: 6.15 mm, number of positions: 5, color: red



DIKD 1,5 - Sensor/actuator terminal block

2715979

<https://www.phoenixcontact.com/in/products/2715979>



EB 4- DIK RD - Insertion bridge

2716758

<https://www.phoenixcontact.com/in/products/2716758>

Insertion bridge, pitch: 6.15 mm, number of positions: 4, color: red



EB 3- DIK RD - Insertion bridge

2716745

<https://www.phoenixcontact.com/in/products/2716745>

Insertion bridge, pitch: 6.15 mm, number of positions: 3, color: red



DIKD 1,5 - Sensor/actuator terminal block

2715979

<https://www.phoenixcontact.com/in/products/2715979>



EB 2- DIK RD - Insertion bridge

2716693

<https://www.phoenixcontact.com/in/products/2716693>

Insertion bridge, pitch: 6.15 mm, number of positions: 2, color: red




FB-150 METER - Fixed bridge

0201595

<https://www.phoenixcontact.com/in/products/0201595>



Cross connection rail, for fixed bridging of identical inputs and outputs, made of Cu, nickel-plated, 1 m long

 Max. current carrying capacity: 26 A

DIKD 1,5 - Sensor/actuator terminal block

2715979

<https://www.phoenixcontact.com/in/products/2715979>

ZS-6 - Screw

0201605

<https://www.phoenixcontact.com/in/products/0201605>

Screw



ATP-DIKD 1,5 - Partition plate

1413285

<https://www.phoenixcontact.com/in/products/1413285>

Partition plate, length: 83 mm, width: 2 mm, height: 60 mm, color: gray



DIKD 1,5 - Sensor/actuator terminal block

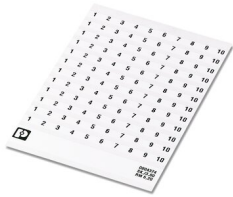
2715979

<https://www.phoenixcontact.com/in/products/2715979>

SK 6,2/3,8:FORTL.ZAHLEN - Marker card

0804374

<https://www.phoenixcontact.com/in/products/0804374>



Marker card, white, labeled, horizontal: consecutive numbers 1 ... 10, 11 ... 20, etc. up to 91 ... (99)100, mounting type: adhesive, for terminal block width: 6.2 mm, lettering field size: 6.2 x 3.8 mm

SBS 6:UNBEDRUCKT - Marker card

1007222

<https://www.phoenixcontact.com/in/products/1007222>



Marker card, Card, white, unlabeled, can be labeled with: Marker pen, mounting type: snapped, snap into flat marker groove, for terminal block width: 6 mm, lettering field size: 6 x 6.1 mm, Number of individual labels: 250

DIKD 1,5 - Sensor/actuator terminal block

2715979

<https://www.phoenixcontact.com/in/products/2715979>



SF-SL 0,6X3,5-100 S-VDE - Screwdriver

1212587

<https://www.phoenixcontact.com/in/products/1212587>



Actuation tool, for ST terminal blocks, VDE insulated, with slimmer insulation integrated in the blade, also suitable for use as a bladed screwdriver, size: 0.6 x 3.5 x 100 mm, 2-component grip, with non-slip grip

NS 35/ 7,5 PERF 2000MM - DIN rail perforated

0801733

<https://www.phoenixcontact.com/in/products/0801733>



DIN rail perforated, acc. to EN 60715, material: Steel, galvanized, passivated with a thick layer, Standard profile, color: silver, Pack of 25 (50 m)

DIKD 1,5 - Sensor/actuator terminal block

2715979

<https://www.phoenixcontact.com/in/products/2715979>



NS 35/ 7,5 UNPERF 2000MM - DIN rail, unperforated

0801681

<https://www.phoenixcontact.com/in/products/0801681>



DIN rail, unperforated, acc. to EN 60715, material: Steel, galvanized, passivated with a thick layer, Standard profile, color: silver, Pack of 25 (50 m)

NS 35/ 7,5 WH PERF 2000MM - DIN rail perforated

1204119

<https://www.phoenixcontact.com/in/products/1204119>



DIN rail perforated, acc. to EN 60715, material: Steel, Galvanized, white passivated, Standard profile, color: silver, Pack of 25 (50 m)

DIKD 1,5 - Sensor/actuator terminal block

2715979

<https://www.phoenixcontact.com/in/products/2715979>



NS 35/ 7,5 WH UNPERF 2000MM-VPE 10 - DIN rail, unperforated

1204122

<https://www.phoenixcontact.com/in/products/1204122>



DIN rail, unperforated, acc. to EN 60715, material: Steel, Galvanized, white passivated, Standard profile, color: silver, Pack of 10 (20 m)

NS 35/ 7,5 AL UNPERF 2000MM - DIN rail, unperforated

0801704

<https://www.phoenixcontact.com/in/products/0801704>



DIN rail, unperforated, acc. to EN 60715, material: Aluminum, uncoated, Standard profile, color: silver, Pack of 25 (50 m)

DIKD 1,5 - Sensor/actuator terminal block

2715979

<https://www.phoenixcontact.com/in/products/2715979>



NS 35/ 7,5 ZN PERF 2000MM - DIN rail perforated

1206421

<https://www.phoenixcontact.com/in/products/1206421>



DIN rail perforated, acc. to EN 60715, material: Steel, galvanized, Standard profile, color: silver, Pack of 25 (50 m)

NS 35/ 7,5 ZN UNPERF 2000MM - DIN rail, unperforated

1206434

<https://www.phoenixcontact.com/in/products/1206434>



DIN rail, unperforated, acc. to EN 60715, material: Steel, galvanized, Standard profile, color: silver, Pack of 25 (50 m)

DIKD 1,5 - Sensor/actuator terminal block

2715979

<https://www.phoenixcontact.com/in/products/2715979>



NS 35/ 7,5 CU UNPERF 2000MM-VPE 10 - DIN rail, unperforated

0801762

<https://www.phoenixcontact.com/in/products/0801762>



DIN rail, unperforated, acc. to EN 60715, material: Copper, uncoated, Standard profile, color: copper-colored, Pack of 10 (20 m)

NS 35/ 7,5 CAP - End cap

1206560

<https://www.phoenixcontact.com/in/products/1206560>

DIN rail end piece, for DIN rail NS 35/7.5



DIKD 1,5 - Sensor/actuator terminal block

2715979

<https://www.phoenixcontact.com/in/products/2715979>



NS 35/15 PERF 2000MM - DIN rail perforated

1201730

<https://www.phoenixcontact.com/in/products/1201730>



DIN rail perforated, similar to EN 60715, material: Steel, galvanized, passivated with a thick layer, Standard profile, color: silver, Pack of 25 (50 m)

NS 35/15 UNPERF 2000MM - DIN rail, unperforated

1201714

<https://www.phoenixcontact.com/in/products/1201714>



DIN rail, unperforated, similar to EN 60715, material: Steel, galvanized, passivated with a thick layer, Standard profile, color: silver, Pack of 25 (50 m)

DIKD 1,5 - Sensor/actuator terminal block

2715979

<https://www.phoenixcontact.com/in/products/2715979>



NS 35/15 WH PERF 2000MM - DIN rail perforated

0806602

<https://www.phoenixcontact.com/in/products/0806602>



DIN rail perforated, similar to EN 60715, material: Steel, Galvanized, white passivated, Standard profile, color: white, Pack of 25 (50 m)

NS 35/15 WH UNPERF 2000MM-VPE 10 - DIN rail, unperforated

1204135

<https://www.phoenixcontact.com/in/products/1204135>



DIN rail, unperforated, similar to EN 60715, material: Steel, Galvanized, white passivated, Standard profile, color: silver, Pack of 10 (20 m)

DIKD 1,5 - Sensor/actuator terminal block

2715979

<https://www.phoenixcontact.com/in/products/2715979>



NS 35/15 AL UNPERF 2000MM - DIN rail, unperforated

1201756

<https://www.phoenixcontact.com/in/products/1201756>



DIN rail, unperforated, similar to EN 60715, material: Aluminum, uncoated, Standard profile, color: silver

NS 35/15 ZN PERF 2000MM - DIN rail perforated

1206599

<https://www.phoenixcontact.com/in/products/1206599>



DIN rail perforated, similar to EN 60715, material: Steel, galvanized, Standard profile, color: silver, Pack of 25 (50 m)

DIKD 1,5 - Sensor/actuator terminal block

2715979

<https://www.phoenixcontact.com/in/products/2715979>



NS 35/15 ZN UNPERF 2000MM - DIN rail, unperforated

1206586

<https://www.phoenixcontact.com/in/products/1206586>



DIN rail, unperforated, similar to EN 60715, material: Steel, galvanized, Standard profile, color: silver, Pack of 25 (50 m)

NS 35/15 CU UNPERF 2000MM-VPE 10 - DIN rail, unperforated

1201895

<https://www.phoenixcontact.com/in/products/1201895>



DIN rail, unperforated, similar to EN 60715, material: Copper, uncoated, Standard profile, color: copper-colored, Pack of 10 (20 m)

DIKD 1,5 - Sensor/actuator terminal block

2715979

<https://www.phoenixcontact.com/in/products/2715979>



NS 35/15 CAP - End cap

1206573

<https://www.phoenixcontact.com/in/products/1206573>

DIN rail end piece, for DIN rail NS 35/15



NS 35/15-2,3 UNPERF 2000MM-VPE 10 - DIN rail, unperforated

1201798

<https://www.phoenixcontact.com/in/products/1201798>



DIN rail, unperforated, acc. to EN 60715, material: Steel, galvanized, passivated with a thick layer, Standard profile 2.3 mm, color: silver, Pack of 10 (20 m)

DIKD 1,5 - Sensor/actuator terminal block

2715979

<https://www.phoenixcontact.com/in/products/2715979>

ZB 6:UNBEDRUCKT - Zack marker strip

1051003

<https://www.phoenixcontact.com/in/products/1051003>



Zack marker strip, Strip, white, unlabeled, can be labeled with: PLOTMARK, CMS-P1-PLOTTER, mounting type: snapped, for terminal block width: 6.2 mm, lettering field size: 6.15 x 10.5 mm, Number of individual labels: 10

ZB 6 CUS - Zack marker strip

0824992

<https://www.phoenixcontact.com/in/products/0824992>



Zack marker strip, can be ordered: Strip, white, labeled according to customer specifications, mounting type: snap into tall marker groove, for terminal block width: 6.2 mm, lettering field size: 6.15 x 10.5 mm, Number of individual labels: 10

DIKD 1,5 - Sensor/actuator terminal block

2715979

<https://www.phoenixcontact.com/in/products/2715979>

ZB 6,LGS:FORTL.ZAHLEN - Zack marker strip

1051016

<https://www.phoenixcontact.com/in/products/1051016>

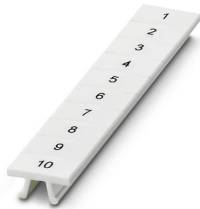


Zack marker strip, Strip, white, labeled, can be labeled with: CMS-P1-PLOTTER, printed horizontally: consecutive numbers 1 ... 10, 11 ... 20, etc. up to 491 ... 500, mounting type: snapped, for terminal block width: 6.2 mm, lettering field size: 6. 15 x 10.5 mm, Number of individual labels: 10

ZB 6,QR:FORTL.ZAHLEN - Zack marker strip

1051029

<https://www.phoenixcontact.com/in/products/1051029>



Zack marker strip, Strip, white, labeled, can be labeled with: CMS-P1-PLOTTER, Printed vertically: consecutive numbers 1 ... 10, 11 ... 20, etc. up to 491 ... 500, mounting type: snapped, for terminal block width: 6.2 mm, lettering field size: 6. 15 x 10.5 mm, Number of individual labels: 10

DIKD 1,5 - Sensor/actuator terminal block

2715979

<https://www.phoenixcontact.com/in/products/2715979>

ZB 6,LGS:GLEICHE ZAHLEN - Zack marker strip

1051032

<https://www.phoenixcontact.com/in/products/1051032>



Zack marker strip, Strip, white, labeled, can be labeled with: CMS-P1-PLOTTER, printed horizontally: Identical numbers 1 or 2, etc. up to 100, mounting type: snapped, for terminal block width: 6.2 mm, lettering field size: 6.15 x 10.5 mm, Number of individual labels: 10

ZB 6,LGS:L1-N,PE - Marker for terminal blocks

1051414

<https://www.phoenixcontact.com/in/products/1051414>



Marker for terminal blocks, Strip, white, labeled, can be labeled with: CMS-P1-PLOTTER, horizontal: L1, L2, L3, N, PE, L1, L2, L3, N, PE, mounting type: snapped, for terminal block width: 6.2 mm, lettering field size: 6.15 x 10.5 mm, Number of individual labels: 10

DIKD 1,5 - Sensor/actuator terminal block

2715979

<https://www.phoenixcontact.com/in/products/2715979>

ZB 6,LGS:U-N - Marker for terminal blocks

1051430

<https://www.phoenixcontact.com/in/products/1051430>



Marker for terminal blocks, Strip, white, labeled, can be labeled with: CMS-P1-PLOTTER, printed horizontally: U, V, W, N, GND, U, V, W, N, GND, mounting type: snapped, for terminal block width: 6.2 mm, lettering field size: 6.15 x 10.5 mm, Number of individual labels: 10

UC-TM 6 - Marker for terminal blocks

0818085

<https://www.phoenixcontact.com/in/products/0818085>



Marker for terminal blocks, Sheet, white, unlabeled, can be labeled with: BLUEMARK ID COLOR, BLUEMARK ID, BLUEMARK CLED, PLOTMARK, CMS-P1-PLOTTER, mounting type: snapped, for terminal block width: 6.2 mm, lettering field size: 5.6 x 10.5 mm, Number of individual labels: 80

DIKD 1,5 - Sensor/actuator terminal block

2715979

<https://www.phoenixcontact.com/in/products/2715979>



UC-TM 6 CUS - Marker for terminal blocks

0824589

<https://www.phoenixcontact.com/in/products/0824589>



Marker for terminal blocks, can be ordered: by sheet, white, labeled according to customer specifications, mounting type: snap into tall marker groove, for terminal block width: 6.2 mm, lettering field size: 5.6 x 10.5 mm, Number of individual labels: 80

UCT-TM 6 - Marker for terminal blocks

0828736

<https://www.phoenixcontact.com/in/products/0828736>



Marker for terminal blocks, Sheet, white, unlabeled, can be labeled with: TOPMARK NEO, TOPMARK LASER, BLUEMARK ID COLOR, BLUEMARK ID, BLUEMARK CLED, THERMOMARK PRIME, THERMOMARK CARD 2.0, THERMOMARK CARD, mounting type: snapped, for terminal block width: 6.2 mm, lettering field size: 5.6 x 10.5 mm, Number of individual labels: 60

DIKD 1,5 - Sensor/actuator terminal block

2715979

<https://www.phoenixcontact.com/in/products/2715979>



UCT-TM 6 CUS - Marker for terminal blocks

0829602

<https://www.phoenixcontact.com/in/products/0829602>



Marker for terminal blocks, can be ordered: by sheet, white, labeled according to customer specifications, mounting type: snap into tall marker groove, for terminal block width: 6.2 mm, lettering field size: 5.6 x 10.5 mm, Number of individual labels: 60

CLIPFIX 35 - End clamp

3022218

<https://www.phoenixcontact.com/in/products/3022218>



Quick mounting end clamp for NS 35/7,5 DIN rail or NS 35/15 DIN rail, with marking option, width: 9.5 mm, color: gray

DIKD 1,5 - Sensor/actuator terminal block

2715979

<https://www.phoenixcontact.com/in/products/2715979>



CLIPFIX 35-5 - End clamp

3022276

<https://www.phoenixcontact.com/in/products/3022276>

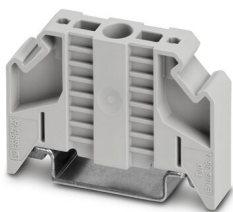


Quick mounting end clamp for NS 35/7,5 DIN rail or NS 35/15 DIN rail, with marking option, with parking option for FBS...5, FBS...6, KSS 5, KSS 6, width: 5.15 mm, color: gray

E/NS 35 N - End clamp

0800886

<https://www.phoenixcontact.com/in/products/0800886>



End clamp, width: 9.5 mm, color: gray

DIKD 1,5 - Sensor/actuator terminal block



2715979

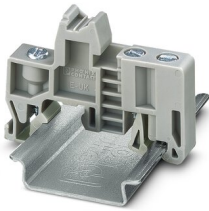
<https://www.phoenixcontact.com/in/products/2715979>

E/UK - End clamp

1201442

<https://www.phoenixcontact.com/in/products/1201442>

End clamp, material: PA, color: gray, Mounting on a DIN rail NS 32 or NS 35



E/UK 1 - End clamp

1201413

<https://www.phoenixcontact.com/in/products/1201413>

End clamps, for supporting the ends of double-level and three-level terminal blocks, width: 10 mm, color: gray



Phoenix Contact 2023 © - all rights reserved
<https://www.phoenixcontact.com>

PHOENIX CONTACT (I) Pvt. Ltd.
A-58/2, Okhla Industrial Area, Phase - II, New Delhi-110 020

+91.1275.71420
info@phoenixcontact.co.in