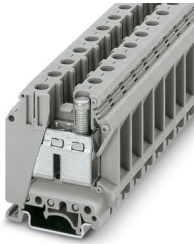


# UK 35 - Feed-through terminal block

3008012

<https://www.phoenixcontact.com/in/products/3008012>

Please be informed that the data shown in this PDF document is generated from our Online Catalog. Please find the complete data in the user documentation. Our General Terms of Use for Downloads are valid.



Feed-through terminal block, nom. voltage: 1000 V, nominal current: 125 A, number of connections: 2, connection method: Screw connection, cross section: 0.75 mm<sup>2</sup> - 50 mm<sup>2</sup>, mounting type: NS 35/7,5, NS 35/15, NS 32, color: gray

## Your advantages

- The large wiring space enables the connection of solid and stranded conductors without ferrules, even above the nominal cross section
- As well as saving space, the compact design enables user-friendly wiring in a small amount of space
- Optimum screwdriver guidance through closed screw shafts

## Commercial Data

Item number	3008012
Packing unit	50 pc
Minimum order quantity	1 pc
Sales Key	BE1
Product Key	BE1211
Catalog Page	Page 213 (CL-2005)
GTIN	4017918091552
Weight per Piece (including packing)	57.6 g
Weight per Piece (excluding packing)	55.656 g
Customs tariff number	25093400
Country of origin	IN

# UK 35 - Feed-through terminal block



3008012

<https://www.phoenixcontact.com/in/products/3008012>

## Technical Data

### Product properties

Product type	Feed-through terminal block
Number of connections	2
Number of rows	1
Potentials	1

### Insulation characteristics

Overvoltage category	III
Degree of pollution	3

### Electrical properties

Rated surge voltage	8 kV
Maximum power dissipation for nominal condition	4.06 W

### Connection data

Number of connections per level	2
Nominal cross section	35 mm <sup>2</sup>
Rated cross section AWG	2

### Level 1 above 1 below 1

Screw thread	M6
Tightening torque	3.2 ... 3.7 Nm
Stripping length	16 mm
Internal cylindrical gage	B9
Connection in acc. with standard	IEC 60947-7-1
Conductor cross section rigid	0.75 mm <sup>2</sup> ... 50 mm <sup>2</sup>
Cross section AWG	18 ... 1/0 (converted acc. to IEC)
Conductor cross section flexible	0.75 mm <sup>2</sup> ... 35 mm <sup>2</sup>
Conductor cross section, flexible [AWG]	18 ... 2 (converted acc. to IEC)
Conductor cross-section flexible (ferrule without plastic sleeve)	0.75 mm <sup>2</sup> ... 35 mm <sup>2</sup>
Flexible conductor cross section (ferrule with plastic sleeve)	0.75 mm <sup>2</sup> ... 35 mm <sup>2</sup>
2 conductors with same cross section, solid	0.75 mm <sup>2</sup> ... 16 mm <sup>2</sup>
2 conductors with same cross section, flexible	0.75 mm <sup>2</sup> ... 10 mm <sup>2</sup>
2 conductors with same cross section, flexible, with ferrule without plastic sleeve	0.75 mm <sup>2</sup> ... 10 mm <sup>2</sup>
2 conductors with the same cross section, flexible, with TWIN ferrule with plastic sleeve	0.75 mm <sup>2</sup> ... 6 mm <sup>2</sup>
Nominal current	125 A
Maximum load current	150 A (with 50 mm <sup>2</sup> conductor cross section)
Nominal voltage	1000 V

### Ex data

# UK 35 - Feed-through terminal block



3008012

<https://www.phoenixcontact.com/in/products/3008012>

## Rated data (ATEX/IECEX)

Identification	□ II 2 GD Ex eb IIC Gb
Operating temperature range	-60 °C ... 110 °C
Ex-certified accessories	3008096 TP-UK 35
	1205079 SZS 1,0X6,5 VDE
	1201442 E/UK
List of bridges	Fixed bridge / FBI 2-15 / 0201333
	Fixed bridge / FBI 3-15 / 0201278
Bridge data	118.5 A / 35 mm <sup>2</sup>
List of bridges	Insertion bridge / EB 2-15 K/UK 35 / 0205119
	Insertion bridge / EB 10-15 / 0205135
Bridge data	105.5 A / 35 mm <sup>2</sup>
List of bridges	Chain bridge / KBI- 15 / 0205203
Bridge data	116 A / 35 mm <sup>2</sup>
Ex temperature increase	40 K (130.5 A / 35 mm <sup>2</sup> )
Rated voltage	690 V
at bridging with insertion bridge	690 V
for bridging with bridge	690 V
Rated insulation voltage	630 V
output	(Permanent)

## Ex level General

Rated current	118.5 A
Maximum load current	147 A
Contact resistance	0.08 mΩ

## Ex connection data General

Torque range	3.2 Nm ... 3.7 Nm
Nominal cross section	35 mm <sup>2</sup>
Rated cross section AWG	2
Connection capacity rigid	0.75 mm <sup>2</sup> ... 50 mm <sup>2</sup>
Connection capacity AWG	18 ... 1/0
Connection capacity flexible	0.75 mm <sup>2</sup> ... 35 mm <sup>2</sup>
Connection capacity AWG	18 ... 2
2 conductors with same cross section, solid	0.75 mm <sup>2</sup> ... 16 mm <sup>2</sup>
2 conductors with the same cross-section AWG rigid	18 ... 6
2 conductors with same cross section, stranded	0.75 mm <sup>2</sup> ... 10 mm <sup>2</sup>
2 conductors with the same cross-section AWG flexible	18 ... 8

## Dimensions

Width	15.1 mm
Height NS 35/15	69.5 mm
Height NS 35/7,5	62 mm
Height	2.441 "

# UK 35 - Feed-through terminal block



3008012

<https://www.phoenixcontact.com/in/products/3008012>

Height NS 32	67 mm
Length	50 mm

## Material specifications

Color	gray
Flammability rating according to UL 94	V0
Insulating material group	I
Insulating material	PA
Static insulating material application in cold	-60 °C
Temperature index of insulation material (DIN EN 60216-1 (VDE 0304-21))	125 °C
Relative insulation material temperature index (Elec., UL 746 B)	130 °C
Fire protection for rail vehicles (DIN EN 45545-2) R22	HL 1 - HL 3
Fire protection for rail vehicles (DIN EN 45545-2) R23	HL 1 - HL 3
Fire protection for rail vehicles (DIN EN 45545-2) R24	HL 1 - HL 3
Fire protection for rail vehicles (DIN EN 45545-2) R26	HL 1 - HL 3
Calorimetric heat release NFPA 130 (ASTM E 1354)	27,5 MJ/kg
Surface flammability NFPA 130 (ASTM E 162)	passed
Specific optical density of smoke NFPA 130 (ASTM E 662)	passed
Smoke gas toxicity NFPA 130 (SMP 800C)	passed

## Electrical tests

### Surge voltage test

Test voltage setpoint	9.8 kV
Result	Test passed

### Temperature-rise test

Requirement temperature-rise test	Increase in temperature $\leq$ 45 K
Result	Test passed
Short-time withstand current 35 mm <sup>2</sup>	4.2 kA
Short-time withstand current 50 mm <sup>2</sup>	6 kA
Result	Test passed

### Power-frequency withstand voltage

Test voltage setpoint	2.2 kV
Result	Test passed

## Mechanical properties

### Mechanical data

Open side panel	No
-----------------	----

## Mechanical tests

### Mechanical strength

Result	Test passed
--------	-------------

# UK 35 - Feed-through terminal block



3008012

<https://www.phoenixcontact.com/in/products/3008012>

## Attachment on the carrier

DIN rail/fixing support	NS 32/NS 35
Test force setpoint	10 N
Result	Test passed

## Test for conductor damage and slackening

Rotation speed	10 rpm
Revolutions	135
Conductor cross section/weight	0.75 mm <sup>2</sup> / 0.4 kg
	35 mm <sup>2</sup> / 6.8 kg
	50 mm <sup>2</sup> / 9.5 kg
Result	Test passed

## Environmental and real-life conditions

### Needle-flame test

Time of exposure	30 s
Result	Test passed

### Ambient conditions

Ambient temperature (operation)	-60 °C ... 105 °C (max. short-term operating temperature RTI Elec.)
Ambient temperature (storage/transport)	-25 °C ... 60 °C (for a short time, not exceeding 24 h, -60 °C to +70 °C)
Ambient temperature (assembly)	-5 °C ... 70 °C
Ambient temperature (actuation)	-5 °C ... 70 °C
Permissible humidity (storage/transport)	30 % ... 70 %

## Standards and regulations

Connection in acc. with standard	IEC 60947-7-1
----------------------------------	---------------

## Mounting

Mounting type	NS 35/7,5
	NS 35/15
	NS 32

# UK 35 - Feed-through terminal block

3008012

<https://www.phoenixcontact.com/in/products/3008012>



## Drawings

### Circuit diagram




# UK 35 - Feed-through terminal block




3008012

<https://www.phoenixcontact.com/in/products/3008012>

## Approvals


 <b>CSA</b> Approval ID: 13631				
	Nominal Voltage $U_N$	Nominal Current $I_N$	Cross Section AWG	Cross Section $mm^2$
	600 V	150 A	18 - 1/0	-
	600 V	150 A	18 - 1/0	-
	1000 V	150 A	18 - 1/0	-

 <b>IECEE CB Scheme</b> Approval ID: NL-26111				
	Nominal Voltage $U_N$	Nominal Current $I_N$	Cross Section AWG	Cross Section $mm^2$
	1000 V	-	-	- 35

 <b>cULus Recognized</b> Approval ID: E60425				
	Nominal Voltage $U_N$	Nominal Current $I_N$	Cross Section AWG	Cross Section $mm^2$
	600 V	150 A	18 - 1/0	-
	600 V	150 A	18 - 1/0	-
	1000 V	150 A	18 - 1/0	-

 <b>KEMA-KEUR</b> Approval ID: 71-119836				
	Nominal Voltage $U_N$	Nominal Current $I_N$	Cross Section AWG	Cross Section $mm^2$
	1000 V	-	-	0.75 - 35

 <b>KR</b> Approval ID: HMB17372-EL001				
--	--	--	--	--

 <b>ClassNK</b> Approval ID: 09 ME 141				
--	--	--	--	--

 <b>RS</b> Approval ID: 22.44.01.00083.250				
--	--	--	--	--


 <b>ATEX</b> Approval ID: KEMA98ATEX1786U				
---	--	--	--	--


# UK 35 - Feed-through terminal block





3008012


<https://www.phoenixcontact.com/in/products/3008012>


 <b>cUL Recognized</b> Approval ID: E192998				
	Nominal Voltage $U_N$	Nominal Current $I_N$	Cross Section AWG	Cross Section $\text{mm}^2$
	600 V	150 A	18 - 1/0	-

 <b>EAC Ex</b> Approval ID: RU C-DE.HA91.B.00066				
--	--	--	--	--

 <b>GL</b> Approval ID: 98876-96 HH				
	Nominal Voltage $U_N$	Nominal Current $I_N$	Cross Section AWG	Cross Section $\text{mm}^2$
	690 V	118.5 A	-	- 35

 <b>IECEx</b> Approval ID: IECEx KEM 06.0029U				
--	--	--	--	--

 <b>UL Recognized</b> Approval ID: E192998				
	Nominal Voltage $U_N$	Nominal Current $I_N$	Cross Section AWG	Cross Section $\text{mm}^2$
	600 V	150 A	18 - 1/0	-

 <b>CCC</b> Approval ID: 2020322313000623				
---	--	--	--	--

 <b>NEPSI</b> Approval ID: GYJ20.1195U				
--	--	--	--	--

 <b>DNV GL-EX</b> Approval ID: TAE00003K6				
	Nominal Voltage $U_N$	Nominal Current $I_N$	Cross Section AWG	Cross Section $\text{mm}^2$
	440 V	32 A	-	- 2.5



# UK 35 - Feed-through terminal block



3008012

<https://www.phoenixcontact.com/in/products/3008012>

## Classifications

### ECLASS

ECLASS-11.0

27141120

### ETIM

ETIM 8.0

EC000897

### UNSPSC

UNSPSC 21.0

39121400

# UK 35 - Feed-through terminal block



3008012

<https://www.phoenixcontact.com/in/products/3008012>

## Environmental Product Compliance


China RoHS	Environmentally friendly use period: unlimited = EFUP-e
	No hazardous substances above threshold values

# UK 35 - Feed-through terminal block

3008012

<https://www.phoenixcontact.com/in/products/3008012>

## Accessories

 Note: Applying some accessories below might limit this product.


### FBI 2-15 - Fixed bridge

0201333

<https://www.phoenixcontact.com/in/products/0201333>



Fixed bridge, pitch: 15 mm, number of positions: 2, color: silver

 Max. current carrying capacity: 125 A

---

### FBI 3-15 - Fixed bridge

0201278

<https://www.phoenixcontact.com/in/products/0201278>



Fixed bridge, pitch: 15 mm, number of positions: 3, color: silver

 Max. current carrying capacity: 125 A

# UK 35 - Feed-through terminal block

3008012

<https://www.phoenixcontact.com/in/products/3008012>



## FBI 5-15 - Fixed bridge

0711302

<https://www.phoenixcontact.com/in/products/0711302>



Fixed bridge, pitch: 15 mm, number of positions: 5, color: silver

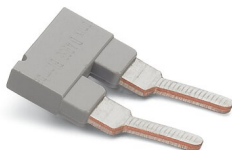
 Max. current carrying capacity: 125 A

---


## EB 2-15 - Insertion bridge

0203166

<https://www.phoenixcontact.com/in/products/0203166>



Insertion bridge, pitch: 15.25 mm, number of positions: 2, color: gray

 Max. current carrying capacity: 76 A

# UK 35 - Feed-through terminal block

3008012

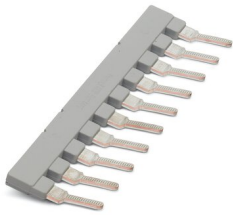
<https://www.phoenixcontact.com/in/products/3008012>




## EB 10-15 - Insertion bridge

0205135

<https://www.phoenixcontact.com/in/products/0205135>



Insertion bridge, pitch: 15.25 mm, number of positions: 10, color: gray

 Max. current carrying capacity: 76 A

---


## EB 2-15 K/UK 35 - Insertion bridge

0205119

<https://www.phoenixcontact.com/in/products/0205119>



Insertion bridge, pitch: 15 mm, number of positions: 2, color: gray

 Max. current carrying capacity: 76 A

# UK 35 - Feed-through terminal block

3008012

<https://www.phoenixcontact.com/in/products/3008012>



## EB 3-15 K/UK 35 - Insertion bridge

0205106

<https://www.phoenixcontact.com/in/products/0205106>

Insertion bridge, pitch: 15 mm, number of positions: 3, color: gray



 Max. current carrying capacity: 76 A

---

## EB 10-15 K/UK 35 - Insertion bridge

0205096

<https://www.phoenixcontact.com/in/products/0205096>

Insertion bridge, pitch: 15 mm, number of positions: 10, color: gray



 Max. current carrying capacity: 76 A

# UK 35 - Feed-through terminal block

3008012

<https://www.phoenixcontact.com/in/products/3008012>



## SBH 2-15 - Switching jumper

0205232

<https://www.phoenixcontact.com/in/products/0205232>



Switching jumper, pitch: 15 mm, number of positions: 2, color: silver

 Max. current carrying capacity: 120 A

---

## WS 5-15 - Warning label

1004445

<https://www.phoenixcontact.com/in/products/1004445>

Warning label, Plate, orange, labeled: Lightning flash and warning in English, mounting type: plug in, for terminal block width: 15 mm, diameter: 0 mm



## UK 35 - Feed-through terminal block

3008012

<https://www.phoenixcontact.com/in/products/3008012>



## WS 4-15 - Warning label

1004241

<https://www.phoenixcontact.com/in/products/1004241>

Warning label, Plate, orange, labeled: Lightning flash and warning in English, mounting type: plug in, for terminal block width: 15 mm, diameter: 0 mm



---

## EA 11 - Cover

1024263

<https://www.phoenixcontact.com/in/products/1024263>

Single cover, for covering one terminal block, snap fit, cannot be labeled, color: transparent





# UK 35 - Feed-through terminal block

3008012

<https://www.phoenixcontact.com/in/products/3008012>



## STL 35/10 - Step bracket

0204084

<https://www.phoenixcontact.com/in/products/0204084>



Step bracket, number of positions: 2, color: silver

---

## STL 35/ 5 - Step bracket

0204107

<https://www.phoenixcontact.com/in/products/0204107>



Step bracket, pitch: 5 mm, number of positions: 2, color: silver

# UK 35 - Feed-through terminal block

3008012

<https://www.phoenixcontact.com/in/products/3008012>



## STL 35/16 - Step bracket

0204097

<https://www.phoenixcontact.com/in/products/0204097>

Step bracket, number of positions: 2, color: silver



---

## TS-K - Separating plate

1302215

<https://www.phoenixcontact.com/in/products/1302215>

Separating plate, length: 22 mm, width: 0.5 mm, height: 22 mm, color: gray



# UK 35 - Feed-through terminal block

3008012

<https://www.phoenixcontact.com/in/products/3008012>



## TP-UK 35 - Separating plate

3008096

<https://www.phoenixcontact.com/in/products/3008096>



Separating plate, length: 50 mm, width: 7.5 mm, height: 52 mm, color: gray

---

## SZS 1,0X6,5 VDE - Screwdriver

1205079

<https://www.phoenixcontact.com/in/products/1205079>



Screwdriver, slot-headed, VDE insulated, size: 1.0 x 6.5 x 150 mm, 2-component grip, with non-slip grip

# UK 35 - Feed-through terminal block

3008012

<https://www.phoenixcontact.com/in/products/3008012>



## NS 32 PERF 2000MM-VPE 10 - DIN rail perforated

1201002

<https://www.phoenixcontact.com/in/products/1201002>



DIN rail perforated, acc. to EN 60715, material: Steel, galvanized, passivated with a thick layer, G profile, color: silver, Pack of 10 (20 m)

---

## NS 32 UNPERF 2000MM-VPE 10 - DIN rail, unperforated

1201015

<https://www.phoenixcontact.com/in/products/1201015>



DIN rail, unperforated, acc. to EN 60715, material: Steel, galvanized, passivated with a thick layer, G profile, color: silver, Pack of 10 (20 m)

# UK 35 - Feed-through terminal block

3008012

<https://www.phoenixcontact.com/in/products/3008012>



## NS 35/ 7,5 PERF 2000MM - DIN rail perforated

0801733

<https://www.phoenixcontact.com/in/products/0801733>



DIN rail perforated, acc. to EN 60715, material: Steel, galvanized, passivated with a thick layer, Standard profile, color: silver, Pack of 25 (50 m)

---

## NS 35/ 7,5 UNPERF 2000MM - DIN rail, unperforated

0801681

<https://www.phoenixcontact.com/in/products/0801681>



DIN rail, unperforated, acc. to EN 60715, material: Steel, galvanized, passivated with a thick layer, Standard profile, color: silver, Pack of 25 (50 m)

# UK 35 - Feed-through terminal block

3008012

<https://www.phoenixcontact.com/in/products/3008012>



## NS 35/ 7,5 WH PERF 2000MM - DIN rail perforated

1204119

<https://www.phoenixcontact.com/in/products/1204119>



DIN rail perforated, acc. to EN 60715, material: Steel, Galvanized, white passivated, Standard profile, color: silver, Pack of 25 (50 m)

---

## NS 35/ 7,5 WH UNPERF 2000MM-VPE 10 - DIN rail, unperforated

1204122

<https://www.phoenixcontact.com/in/products/1204122>



DIN rail, unperforated, acc. to EN 60715, material: Steel, Galvanized, white passivated, Standard profile, color: silver, Pack of 10 (20 m)

# UK 35 - Feed-through terminal block

3008012

<https://www.phoenixcontact.com/in/products/3008012>



## NS 35/ 7,5 AL UNPERF 2000MM - DIN rail, unperforated

0801704

<https://www.phoenixcontact.com/in/products/0801704>



DIN rail, unperforated, acc. to EN 60715, material: Aluminum, uncoated, Standard profile, color: silver, Pack of 25 (50 m)

---

## NS 35/ 7,5 ZN PERF 2000MM - DIN rail perforated

1206421

<https://www.phoenixcontact.com/in/products/1206421>



DIN rail perforated, acc. to EN 60715, material: Steel, galvanized, Standard profile, color: silver, Pack of 25 (50 m)

# UK 35 - Feed-through terminal block

3008012

<https://www.phoenixcontact.com/in/products/3008012>



## NS 35/ 7,5 ZN UNPERF 2000MM - DIN rail, unperforated

1206434

<https://www.phoenixcontact.com/in/products/1206434>



DIN rail, unperforated, acc. to EN 60715, material: Steel, galvanized, Standard profile, color: silver, Pack of 25 (50 m)

---

## NS 35/ 7,5 CU UNPERF 2000MM-VPE 10 - DIN rail, unperforated

0801762

<https://www.phoenixcontact.com/in/products/0801762>



DIN rail, unperforated, acc. to EN 60715, material: Copper, uncoated, Standard profile, color: copper-colored, Pack of 10 (20 m)



# UK 35 - Feed-through terminal block

3008012

<https://www.phoenixcontact.com/in/products/3008012>



## NS 35/ 7,5 CAP - End cap

1206560

<https://www.phoenixcontact.com/in/products/1206560>

DIN rail end piece, for DIN rail NS 35/7.5



---

## NS 35/15 PERF 2000MM - DIN rail perforated

1201730

<https://www.phoenixcontact.com/in/products/1201730>



DIN rail perforated, similar to EN 60715, material: Steel, galvanized, passivated with a thick layer, Standard profile, color: silver, Pack of 25 (50 m)

# UK 35 - Feed-through terminal block

3008012

<https://www.phoenixcontact.com/in/products/3008012>



## NS 35/15 UNPERF 2000MM - DIN rail, unperforated

1201714

<https://www.phoenixcontact.com/in/products/1201714>



DIN rail, unperforated, similar to EN 60715, material: Steel, galvanized, passivated with a thick layer, Standard profile, color: silver, Pack of 25 (50 m)

---

## NS 35/15 WH PERF 2000MM - DIN rail perforated

0806602

<https://www.phoenixcontact.com/in/products/0806602>



DIN rail perforated, similar to EN 60715, material: Steel, Galvanized, white passivated, Standard profile, color: white, Pack of 25 (50 m)

# UK 35 - Feed-through terminal block

3008012

<https://www.phoenixcontact.com/in/products/3008012>



## NS 35/15 WH UNPERF 2000MM-VPE 10 - DIN rail, unperforated

1204135

<https://www.phoenixcontact.com/in/products/1204135>



DIN rail, unperforated, similar to EN 60715, material: Steel, Galvanized, white passivated, Standard profile, color: silver, Pack of 10 (20 m)

---

## NS 35/15 AL UNPERF 2000MM - DIN rail, unperforated

1201756

<https://www.phoenixcontact.com/in/products/1201756>



DIN rail, unperforated, similar to EN 60715, material: Aluminum, uncoated, Standard profile, color: silver

# UK 35 - Feed-through terminal block

3008012

<https://www.phoenixcontact.com/in/products/3008012>



## NS 35/15 ZN PERF 2000MM - DIN rail perforated

1206599

<https://www.phoenixcontact.com/in/products/1206599>



DIN rail perforated, similar to EN 60715, material: Steel, galvanized, Standard profile, color: silver, Pack of 25 (50 m)

---

## NS 35/15 ZN UNPERF 2000MM - DIN rail, unperforated

1206586

<https://www.phoenixcontact.com/in/products/1206586>



DIN rail, unperforated, similar to EN 60715, material: Steel, galvanized, Standard profile, color: silver, Pack of 25 (50 m)

# UK 35 - Feed-through terminal block

3008012

<https://www.phoenixcontact.com/in/products/3008012>

## NS 35/15 CU UNPERF 2000MM-VPE 10 - DIN rail, unperforated

1201895

<https://www.phoenixcontact.com/in/products/1201895>



DIN rail, unperforated, similar to EN 60715, material: Copper, uncoated, Standard profile, color: copper-colored, Pack of 10 (20 m)

---

## NS 35/15 CAP - End cap

1206573

<https://www.phoenixcontact.com/in/products/1206573>

DIN rail end piece, for DIN rail NS 35/15



# UK 35 - Feed-through terminal block

3008012

<https://www.phoenixcontact.com/in/products/3008012>



## NS 35/15-2,3 UNPERF 2000MM-VPE 10 - DIN rail, unperforated

1201798

<https://www.phoenixcontact.com/in/products/1201798>



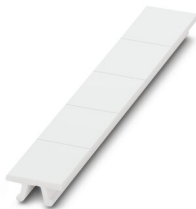
DIN rail, unperforated, acc. to EN 60715, material: Steel, galvanized, passivated with a thick layer, Standard profile 2.3 mm, color: silver, Pack of 10 (20 m)

---

## ZB 15:UNBEDRUCKT - Zack marker strip

0811972

<https://www.phoenixcontact.com/in/products/0811972>



Zack marker strip, Strip, white, unlabeled, can be labeled with: PLOTMARK, CMS-P1-PLOTTER, mounting type: snapped, for terminal block width: 15.2 mm, lettering field size: 10.5 x 15.1 mm, Number of individual labels: 5

# UK 35 - Feed-through terminal block

3008012

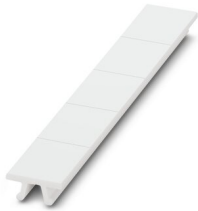
<https://www.phoenixcontact.com/in/products/3008012>



## ZB 15 CUS - Zack marker strip

0824945

<https://www.phoenixcontact.com/in/products/0824945>



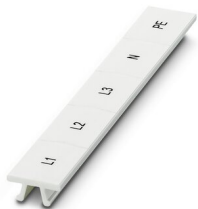
Zack marker strip, can be ordered: Strip, white, labeled according to customer specifications, mounting type: snap into tall marker groove, for terminal block width: 15.2 mm, lettering field size: 10.5 x 15.1 mm, Number of individual labels: 5

---

## ZB 15,LGS:L1-N,PE - Zack marker strip

0811998

<https://www.phoenixcontact.com/in/products/0811998>



Zack marker strip, Strip, white, labeled, printed horizontally: L1, L2, L3, N, PE, mounting type: snapped, for terminal block width: 15.2 mm, lettering field size: 10.5 x 15.1 mm, Number of individual labels: 5

# UK 35 - Feed-through terminal block

3008012

<https://www.phoenixcontact.com/in/products/3008012>



## PS-MT - Test plugs

0311647

<https://www.phoenixcontact.com/in/products/0311647>



Test plugs, number of positions: 1, fuse type: , mounting type: , , color: silver

---

## PS-IH WH - Insulating sleeve

0311566

<https://www.phoenixcontact.com/in/products/0311566>



Insulating sleeve, number of positions: 1, fuse type: , mounting type: , , color: white



# UK 35 - Feed-through terminal block

3008012

<https://www.phoenixcontact.com/in/products/3008012>

## PS-IH RD - Insulating sleeve

0311579

<https://www.phoenixcontact.com/in/products/0311579>



Insulating sleeve, number of positions: 1, fuse type: , mounting type: , , color: red

---

## PS-IH BU - Insulating sleeve

0311582

<https://www.phoenixcontact.com/in/products/0311582>



Insulating sleeve, number of positions: 1, fuse type: , mounting type: , , color: blue

# UK 35 - Feed-through terminal block

3008012

<https://www.phoenixcontact.com/in/products/3008012>

## PS-IH YE - Insulating sleeve

0311595

<https://www.phoenixcontact.com/in/products/0311595>



Insulating sleeve, number of positions: 1, fuse type: , mounting type: , , color: yellow

---

## PS-IH GN - Insulating sleeve

0311605

<https://www.phoenixcontact.com/in/products/0311605>



Insulating sleeve, number of positions: 1, fuse type: , mounting type: , , color: green

# UK 35 - Feed-through terminal block

3008012

<https://www.phoenixcontact.com/in/products/3008012>



## PS-IH GY - Insulating sleeve

0311621

<https://www.phoenixcontact.com/in/products/0311621>



Insulating sleeve, number of positions: 1, fuse type: , mounting type: , , color: gray

---

## PS-IH BK - Insulating sleeve

0311634

<https://www.phoenixcontact.com/in/products/0311634>



Insulating sleeve, number of positions: 1, fuse type: , mounting type: , , color: black

# UK 35 - Feed-through terminal block

3008012

<https://www.phoenixcontact.com/in/products/3008012>



## PS-IH VT - Insulating sleeve

0311618

<https://www.phoenixcontact.com/in/products/0311618>



Insulating sleeve, number of positions: 1, fuse type: , mounting type: , , color: violet

---

## CLIPFIX 35 - End clamp

3022218

<https://www.phoenixcontact.com/in/products/3022218>



Quick mounting end clamp for NS 35/7,5 DIN rail or NS 35/15 DIN rail, with marking option, width: 9.5 mm, color: gray

# UK 35 - Feed-through terminal block

3008012

<https://www.phoenixcontact.com/in/products/3008012>



## CLIPFIX 35-5 - End clamp

3022276

<https://www.phoenixcontact.com/in/products/3022276>



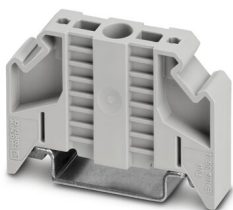
Quick mounting end clamp for NS 35/7,5 DIN rail or NS 35/15 DIN rail, with marking option, with parking option for FBS...5, FBS...6, KSS 5, KSS 6, width: 5.15 mm, color: gray

---

## E/NS 35 N - End clamp

0800886

<https://www.phoenixcontact.com/in/products/0800886>



End clamp, width: 9.5 mm, color: gray

# UK 35 - Feed-through terminal block

3008012

<https://www.phoenixcontact.com/in/products/3008012>



## E/UK - End clamp

1201442

<https://www.phoenixcontact.com/in/products/1201442>

End clamp, material: PA, color: gray, Mounting on a DIN rail NS 32 or NS 35



---

## E/UK 1 - End clamp

1201413

<https://www.phoenixcontact.com/in/products/1201413>

End clamps, for supporting the ends of double-level and three-level terminal blocks, width: 10 mm, color: gray



# UK 35 - Feed-through terminal block

3008012

<https://www.phoenixcontact.com/in/products/3008012>



## PSB 6/5/6 - Female test connector

0205290

<https://www.phoenixcontact.com/in/products/0205290>



Female test connector, number of positions: 1, fuse type: , mounting type: , , ,  
color: silver

---

Phoenix Contact 2023 © - all rights reserved

<https://www.phoenixcontact.com>

PHOENIX CONTACT (I) Pvt. Ltd.

A-58/2, Okhla Industrial Area, Phase - II, New Delhi-110 020

+91.1275.71420

[info@phoenixcontact.co.in](mailto:info@phoenixcontact.co.in)