

This document is the property of Amphenol Corporation and is delivered on the express condition that is not to be disclosed, reproduced or used, in whole or in part, for manufacture or sale by anyone other than Amphenol Corporation without its prior consent, and that no right is granted to disclose or to use any information in this document.

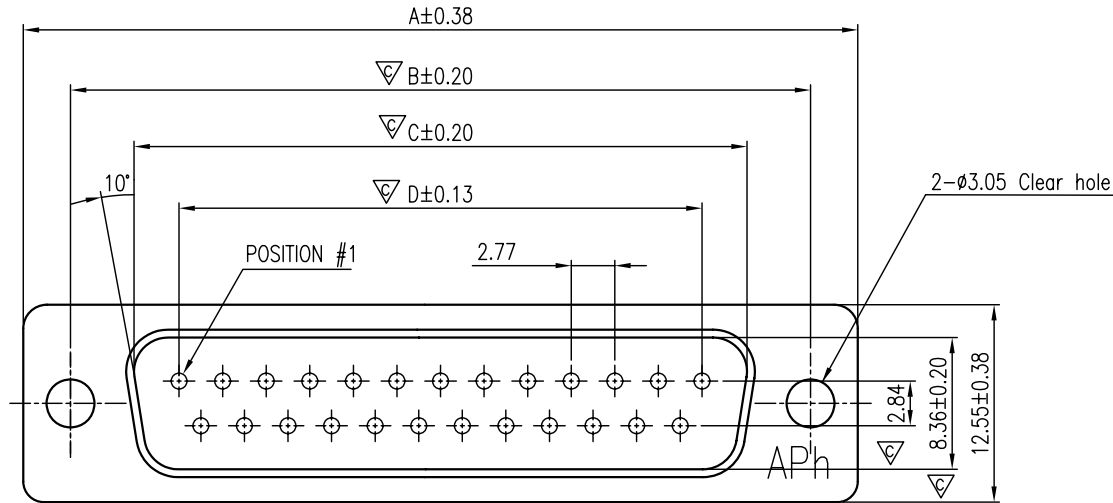
The marking on this product doesn't contain environmental hazardous materials per Material Specification 55-00259 for Sony GP compliant or per directive 2002/95/EC for RoHS compliant.



ORIGINAL

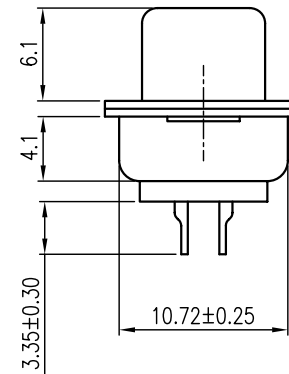
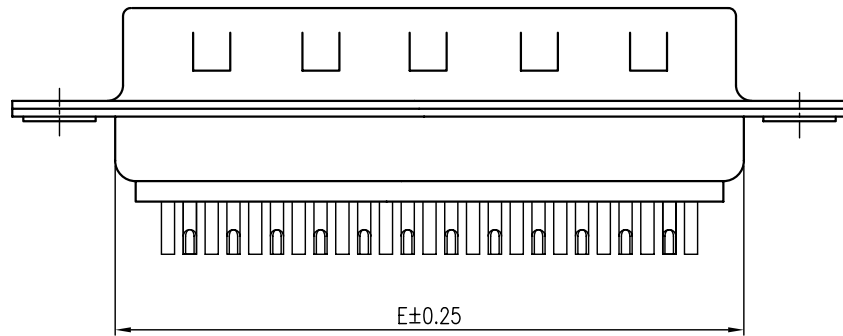


REVISIONS				
SYM	ECN No.	DESCRIPTION	DATE	APPROVED
A		RELEASE FOR RoHS	09/09/2005	Henry Ko
B	NE-07023	MODIFIED DIMENSIONS TABLE & TOLERANCES	01/18/2007	HC Liu
C	NE-07332	CHANGED DIM. FROM 3.52±0.25 TO 3.10±0.38	06/29/2007	Hank Hsu
D	NE-08161	MODIFIED DIMENSIONS	05/09/2008	Hank Hsu
E	NE-09065	CONTACT DESCRIPTION CHANGE	04/15/2009	Hank Hsu
F	NE-10023	ADD AMPHENOL LOGO	02/11/2010	Roger Tsai
A1	NE-10179	REVISED DIMENSIONS	11/03/2010	Arron Lin



NOTES:

- INSULATOR: PBT, UL 94V-0, COLOR- BLACK
- CONTACTS: BRASS, SELECTIVE GOLD PLATED ON CONTACT, GOLD FLASH OR 100μ" MIN TIN PLATING ON SOLDER AREA, 50μ" NICKEL UNDER-PLATING OVERALL
- SHELL: STEEL, SELECTIVE 100μ" MIN. TIN OVER 50μ" MIN. NICKEL PLATING
- THIS PRODUCT DOESN'T CONTAIN ENVIRONMENTAL HAZARDOUS MATERIALS PER DIRECTIVE 2002/95/EC FOR RoHS.
- ▽ ARE CRITICAL DIMENSIONS



PART NUMBER	NO. OF POS.	DIM. A	DIM. B	DIM. C	DIM. D	DIM. E	TOLERANCE			APPROVALS		DATE	TITLE	Amphenol [®] Amphenol Corporation Amphenol Taiwan Corporation					
							X.	X.X	X.XX	ANGULAR	UNLESS OTHERWISE SPECIFIED	DRAWN				CHECKED	APPROVED	DWG TYPE	PROJECT CODE
G17S 09 1X XX0 EU	9	30.81	24.99	16.92	11.08	19.20	X.			±0.30	Arron Lin	11/03/2010	G17S SERIES SOLDER-POT TERMINATION PLUG	mm	A3	G17SXX1XXX0EU	1 OF 1	G17SXX1XXX0EU	A1
G17S 15 1X XX0 EU	15	39.20	33.30	25.25	19.39	27.70	X.X		±0.20	Aqua Chou	11/03/2010								
G17S 25 1X XX0 EU	25	53.04	47.04	38.96	33.24	41.10	X.XX		±0.10	Arron Lin	11/03/2010								
G17S 37 1X XX0 EU	37	69.40	63.50	55.42	49.86	57.30	X.XXX		±0.10			CUST DWG							