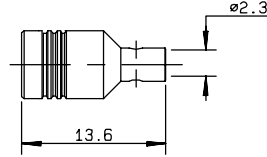


STRAIGHT PLUG SOLDER TYPE FOR SEMI RIGID CABLE



cable	part number	captive center contact	assembly	finish
.085"	R114 053 000	no	M08	Gold

RIGHT ANGLE PLUGS CRIMP TYPE FOR FLEXIBLE CABLES

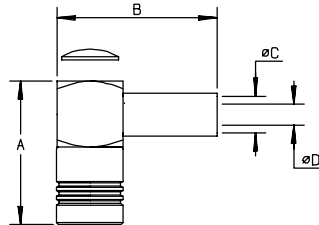


Fig. 1

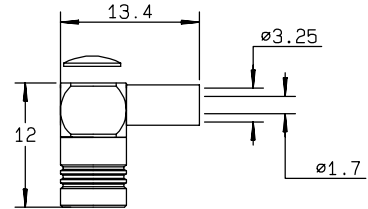


Fig. 2

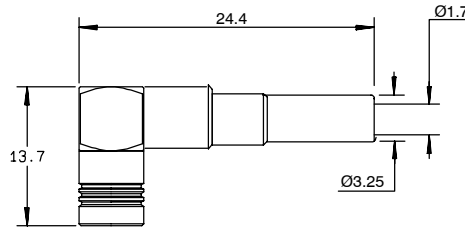


Fig. 3

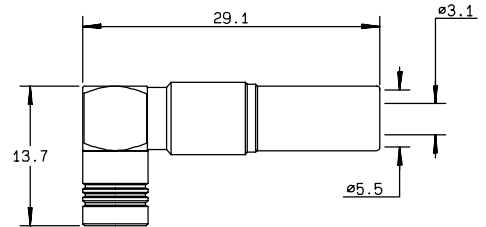


Fig. 4

cable	part number	fig.	dimensions				captive center contact	assembly	finish	note
			A	B	C	D				
2/50/S	R114 183 000	1	13.8	15.7	2.55	0.95	yes	M06	Gold	
2/50/S	R114 183 020	1	13.8	15.7	2.55	0.95	yes	M06	Nickel	
2/50/S	R114 183 430	1	13.7	15.3	3.25	0.95	yes	M06	Nickel	1/2 body Zamak
2.6/50+75/S	R114 185 000	2					yes	M06	Gold	short version
2.6/50+75/S	R114 185 020	2					yes	M06	Nickel	short version
2.6/50+75/S	R114 186 000	1	13.8	15.7	3.25	1.7	yes	M06	Gold	
2.6/50+75/S	R114 186 020	1	13.8	15.7	3.25	1.7	yes	M06	Nickel	
2.6/50+75/S	R114 186 420*●	3					yes	M10	Nickel	full crimp
2.6/50+75/S	R114 186 730	1	13.7	15.3	3.25	1.7	yes	M06	Nickel	1/2 body Zamak
2.6/50+75/S	R114 187 000	1	15.1	15.7	3.25	1.7	yes	M09	Gold	full crimp
2.6/50+75/S	R114 187 020	1	15.1	15.7	3.25	1.7	yes	M09	Nickel	full crimp
2.6/50/D	R114 182 000	1	13.8	15.7	3.25	1.7	yes	M06	Gold	
2.6/50/D	R114 191 130	1	13.7	15.3	3.5	1.7	yes	M06	Nickel	1/2 body Zamak
3.6/75/D	R114 191 300	1	13.7	18.3	4.4	2.1	yes	M06	Gold	cable BT 3002
5/50/S	R114 192 420*●	4					yes	M10	Nickel	full crimp

● upon request

* packaging: unit