

ME MAX 35 2-2 KMGY - Electronic housing



2713670

<https://www.phoenixcontact.com/in/products/2713670>

Please be informed that the data shown in this PDF document is generated from our Online Catalog. Please find the complete data in the user documentation. Our General Terms of Use for Downloads are valid.



DIN rail housing, Complete housing with metal foot catch, tall design, with vents, width: 35.2 mm, height: 99 mm, depth: 113.65 mm, color: light grey (7035), cross connection: DIN rail connector (optional), number of positions cross connector: 5

Your advantages

- Easy installation
- Available in overall widths from 6.2 mm ... 90 mm, modular extension possible
- Variety of connection technology
- Can be mounted on the DIN rail
- With DIN-rail-mountable bus connector and power connector system as an option
- Transparent front cover can be swiveled

Commercial Data

Item number	2713670
Packing unit	10 pc
Minimum order quantity	10 pc
Sales Key	ACH
Product Key	ACHABA
Catalog Page	Page 687 (C-1-2013)
GTIN	4017918917432
Weight per Piece (including packing)	76.09 g
Weight per Piece (excluding packing)	61.099 g
Customs tariff number	85389099
Country of origin	DE

2713670

<https://www.phoenixcontact.com/in/products/2713670>

Technical Data

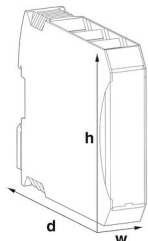
Notes

Assembly instruction:	Refer to the data sheet for the range in the download area.
Recommendation	Material of contact pads for bus connector, galvanic gold (hard gold)

Product properties

Product type	Complete housing
Product family	ME MAX...2-2
Max. number of positions	32 (pitch: 3.5 mm)
	24 (pitch: 5 mm)
	16 (pitch: 7.25 mm/7.5 mm)
Number of rows	2
Type	Complete housing with metal foot catch, tall design
Housing type	DIN rail housing
Ventilation openings present	yes
Housing series	ME-MAX

Dimensions

Dimensional drawing	
Width	35.2 mm
Height	99 mm
Depth	113.65 mm
Depth from top edge of DIN rail	107 mm

PCB design

PCB thickness	1.4 mm ... 1.8 mm
---------------	-------------------

Material specifications

Color	light grey (7035)
Flammability rating according to UL 94	V0
CTI according to IEC 60112	600
Surface characteristics	untreated
Housing material	Polyamide

Environmental and real-life conditions

ME MAX 35 2-2 KMGY - Electronic housing



2713670

<https://www.phoenixcontact.com/in/products/2713670>

Power dissipation single housing for 20 °C

Ambient temperature	20 °C
Reduction factor	1
Mounting position	vertical
Power dissipation	7.9 W

Power dissipation single housing for 30 °C

Ambient temperature	30 °C
Reduction factor	0.91
Mounting position	vertical
Power dissipation	7.2 W

Power dissipation single housing for 40 °C

Ambient temperature	40 °C
Reduction factor	0.81
Mounting position	vertical
Power dissipation	6.4 W

Power dissipation single housing for 50 °C

Ambient temperature	50 °C
Reduction factor	0.7
Mounting position	vertical
Power dissipation	5.5 W

Power dissipation single housing for 60 °C

Ambient temperature	60 °C
Reduction factor	0.57
Mounting position	vertical
Power dissipation	4.5 W

Power dissipation single housing for 70 °C

Ambient temperature	70 °C
Reduction factor	0.49
Mounting position	vertical
Power dissipation	3.7 W

Vibration test

Specification	IEC 60068-2-6:2007-12
Frequency	10 - 150 - 10 Hz
Sweep speed	1 octave/min
Amplitude	0.15 mm (10 Hz ... 58.1 Hz)
Acceleration	2g (58.1 Hz ... 150 Hz)
Test duration per axis	2.5 h
Test directions	X-, Y- and Z-axis

Mechanical strength / tumbling barrel

Specification	IEC 60998-1:2002-12
---------------	---------------------

ME MAX 35 2-2 KMGY - Electronic housing



2713670

<https://www.phoenixcontact.com/in/products/2713670>

Height of fall	50 cm
Frequency	10

Shocks

Specification	IEC 60068-2-27:2008-02
Pulse shape	Half-sine
Acceleration	15g
Shock duration	11 ms
Number of shocks per direction	3
Test directions	X-, Y- and Z-axis (pos. and neg.)

Degree of protection (IP code)

Specification	IEC 60529:1989-11 + AMD 1:1999-11 + AMD 2:2013-08
---------------	---

Ambient conditions

Max. IP code to attain	IP20
Ambient temperature (operation)	-40 °C ... 105 °C (depending on power dissipation)
Ambient temperature (storage/transport)	-40 °C ... 55 °C
Ambient temperature (assembly)	-5 °C ... 100 °C
Relative humidity (storage/transport)	80 %

PCB data

Number of PCB holders	2
Type of PCB mount	Latching
Thickness of the PCB	1.4 mm ... 1.8 mm

Mounting

Mounting type	DIN rail mounting
Mounting position	Vertical (horizontal DIN rail)

Packaging specifications

Type of packaging	packed in cardboard
Outer packaging type	Carton

ME MAX 35 2-2 KMGY - Electronic housing

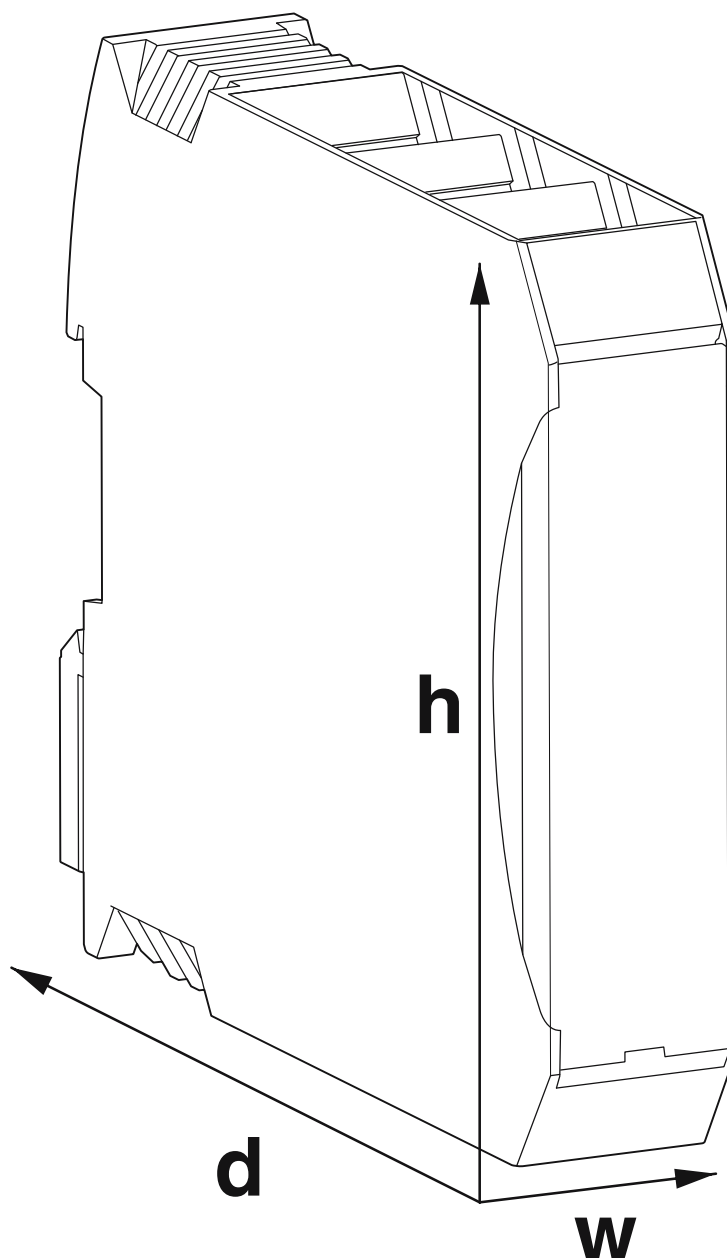
2713670

<https://www.phoenixcontact.com/in/products/2713670>



Drawings

Dimensional drawing



Schematic figure for illustrating the item dimensions. The figure is not of the desired product. For further details, refer to the product drawings in the "Downloads" tab.

ME MAX 35 2-2 KMGY - Electronic housing

2713670

<https://www.phoenixcontact.com/in/products/2713670>



Approvals



UL Recognized

Approval ID: FILE E 240868

ME MAX 35 2-2 KMGY - Electronic housing



2713670

<https://www.phoenixcontact.com/in/products/2713670>

Classifications

ECLASS

ECLASS-11.0

27182702

ETIM

ETIM 8.0

EC001031

UNSPSC

UNSPSC 21.0

31261500

ME MAX 35 2-2 KMGY - Electronic housing



2713670

<https://www.phoenixcontact.com/in/products/2713670>

Environmental Product Compliance

China RoHS	Environmentally friendly use period: unlimited = EFUP-e No hazardous substances above threshold values
------------	---

2713670

<https://www.phoenixcontact.com/in/products/2713670>

Mandatory Accessories

MCO 1,5/ 4-G1L-3,5 KMGY - PCB header

2278364

<https://www.phoenixcontact.com/in/products/2278364>



PCB headers, nominal cross section: 1.5 mm², color: light grey, nominal current: 8 A, rated voltage (III/2): 160 V, contact surface: Tin, type of contact: Pin, number of potentials: 4, number of rows: 1, number of positions: 4, number of connections: 4, product range: MCO 1,5/..-G1L, pitch: 3.5 mm, mounting: Wave soldering, pin layout: Linear pinning, solder pin [P]: 2.75 mm, locking: without, type of packaging: packed in cardboard, Product with pin output on left side

MCO 1,5/ 4-G1R-3,5 KMGY - PCB header

2278377

<https://www.phoenixcontact.com/in/products/2278377>



PCB headers, nominal cross section: 1.5 mm², color: light grey, nominal current: 8 A, rated voltage (III/2): 160 V, contact surface: Tin, type of contact: Pin, number of potentials: 4, number of rows: 1, number of positions: 4, number of connections: 4, product range: MCO 1,5/..-G1R, pitch: 3.5 mm, mounting: Wave soldering, pin layout: Linear pinning, solder pin [P]: 2.75 mm, locking: without, Product with pin output on right side

ME MAX 35 2-2 KMGY - Electronic housing

2713670

<https://www.phoenixcontact.com/in/products/2713670>

MC 1,5/ 4-ST-3,5 GY7035 - PCB connector

1769074

<https://www.phoenixcontact.com/in/products/1769074>



PCB connector, nominal cross section: 1.5 mm², color: light grey, nominal current: 8 A, rated voltage (III/2): 160 V, contact surface: Tin, type of contact: Socket, number of potentials: 4, number of rows: 1, number of positions: 4, number of connections: 4, product range: MC 1,5/...-ST, pitch: 3.5 mm, connection method: Screw connection with tension sleeve, screw head form: L Slotted, conductor/PCB connection direction: 0 °, plug-in system: COMBICON MC 1,5, locking: without, mounting: without, type of packaging: packed in cardboard

FMC 1,5/ 4-ST-3,5 GY7035 - Printed-circuit board connector

1773578

<https://www.phoenixcontact.com/in/products/1773578>



PCB connector, nominal cross section: 1.5 mm², color: light grey, nominal current: 8 A, rated voltage (III/2): 160 V, contact surface: Tin, type of contact: Socket, number of potentials: 4, number of rows: 1, number of positions: 4, number of connections: 4, product range: FMC 1,5/...-ST, pitch: 3.5 mm, connection method: Push-in spring connection, conductor/PCB connection direction: 0 °, plug-in system: COMBICON MC 1,5, locking: without, mounting: without, type of packaging: packed in cardboard

ME MAX 35 2-2 KMGY - Electronic housing

2713670

<https://www.phoenixcontact.com/in/products/2713670>

FK-MCP 1,5/ 4-ST-3,5 GY7035 - PCB connector

1773594

<https://www.phoenixcontact.com/in/products/1773594>



PCB connector, nominal cross section: 1.5 mm², color: light grey, nominal current: 8 A, rated voltage (III/2): 160 V, contact surface: Tin, type of contact: Socket, number of potentials: 4, number of rows: 1, number of positions: 4, number of connections: 4, product range: FK-MCP 1,5/...-ST, pitch: 3.5 mm, connection method: Push-in spring connection, conductor/PCB connection direction: 0 °, plug-in system: COMBICON MC 1,5, locking: without, mounting: without, type of packaging: packed in cardboard

MSTBO 2,5/ 3-G1L KMGY - PCB header

2853750

<https://www.phoenixcontact.com/in/products/2853750>



PCB headers, nominal cross section: 2.5 mm², color: light grey, nominal current: 12 A, rated voltage (III/2): 320 V, contact surface: Tin, type of contact: Pin, number of potentials: 3, number of rows: 1, number of positions: 3, number of connections: 3, product range: MSTBO 2,5/...-G1L, pitch: 5 mm, mounting: Wave soldering, pin layout: Linear pinning, solder pin [P]: 3.5 mm, number of solder pins per potential: 1, plug-in system: COMBICON MSTB 2,5, locking: without, type of packaging: packed in cardboard, Product with pin output on left side

ME MAX 35 2-2 KMGY - Electronic housing

2713670

<https://www.phoenixcontact.com/in/products/2713670>

MSTBO 2,5/ 3-G1R KMGY - PCB header

2853763

<https://www.phoenixcontact.com/in/products/2853763>



PCB headers, nominal cross section: 2.5 mm², color: light grey, nominal current: 12 A, rated voltage (III/2): 320 V, contact surface: Tin, type of contact: Pin, number of potentials: 3, number of rows: 1, number of positions: 3, number of connections: 3, product range: MSTBO 2,5/..-G1R, pitch: 5 mm, mounting: Wave soldering, pin layout: Linear pinning, solder pin [P]: 3.5 mm, number of solder pins per potential: 1, plug-in system: COMBICON MSTB 2,5, locking: without, type of packaging: packed in cardboard, Product with pin output on right side

MSTBO 2,5/ 3 G1L THRR44 BK - PCB header

2915216

<https://www.phoenixcontact.com/in/products/2915216>



PCB headers, nominal cross section: 2.5 mm², color: black, nominal current: 16 A, rated voltage (III/2): 320 V, contact surface: Tin, type of contact: Pin, number of rows: 1, number of positions: 3, product range: MSTBO 2,5/..-G1L-THR, pitch: 5 mm, mounting: THR soldering, pin layout: Linear pinning, solder pin [P]: 2.5 mm, number of solder pins per potential: 1, plug-in system: COMBICON MSTB 2,5, locking: without, type of packaging: 44 mm wide tape, Article with lateral pin exit

ME MAX 35 2-2 KMGY - Electronic housing

2713670

<https://www.phoenixcontact.com/in/products/2713670>

MSTBO 2,5/ 3 G1R THRR44 BK - PCB header

2915229

<https://www.phoenixcontact.com/in/products/2915229>



PCB headers, nominal cross section: 2.5 mm², color: black, nominal current: 16 A, rated voltage (III/2): 320 V, contact surface: Tin, type of contact: Pin, number of rows: 1, number of positions: 3, product range: MSTBO 2,5/..-G1R-THR, pitch: 5 mm, mounting: THR soldering, pin layout: Linear pinning, solder pin [P]: 2.5 mm, number of solder pins per potential: 1, plug-in system: COMBICON MSTB 2,5, locking: without, type of packaging: 44 mm wide tape, Article with lateral pin exit

MSTBO 2,5/ 3-G1PL GY7035 - PCB header

2200328

<https://www.phoenixcontact.com/in/products/2200328>



PCB headers, nominal cross section: 2.5 mm², color: light grey, nominal current: 16 A, rated voltage (III/2): 320 V, contact surface: Tin, type of contact: Pin, number of rows: 1, number of positions: 3, product range: MSTBO 2,5/..-G1PL, pitch: 5 mm, mounting: Wave soldering, pin layout: Linear pinning, solder pin [P]: 3.5 mm, number of solder pins per potential: 1, plug-in system: COMBICON MSTB 2,5, locking: without, type of packaging: packed in cardboard, Product with pin output on left side

ME MAX 35 2-2 KMGY - Electronic housing

2713670

<https://www.phoenixcontact.com/in/products/2713670>

MSTBO 2,5/ 3-G1PR GY7035 - PCB header

2200329

<https://www.phoenixcontact.com/in/products/2200329>

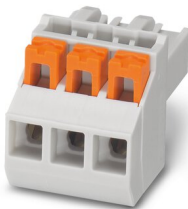


PCB headers, nominal cross section: 2.5 mm², color: light grey, nominal current: 16 A, rated voltage (III/2): 320 V, contact surface: Tin, type of contact: Pin, number of rows: 1, number of positions: 3, product range: MSTBO 2,5/..-G1PR, pitch: 5 mm, mounting: Wave soldering, pin layout: Linear pinning, solder pin [P]: 3.5 mm, number of solder pins per potential: 1, plug-in system: COMBICON MSTB 2,5, locking: without, type of packaging: packed in cardboard, Product with pin output on right side

PSPT 2,5/ 3-ST KMGY - Printed-circuit board connector

2202345

<https://www.phoenixcontact.com/in/products/2202345>



PCB connector, nominal cross section: 2.5 mm², color: light grey, nominal current: 16 A, rated voltage (III/2): 300 V, contact surface: Tin, type of contact: Socket, number of potentials: 3, number of rows: 1, number of positions: 3, number of connections: 3, product range: PSPT 2,5/..-ST, pitch: 5 mm, connection method: Push-in spring connection, conductor/PCB connection direction: 0 °, locking clip: - Locking clip, locking: without, mounting: without, type of packaging: packed in cardboard, Color of the spring lever: orange

ME MAX 35 2-2 KMGY - Electronic housing

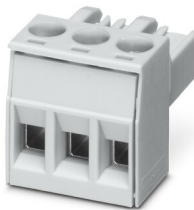
2713670

<https://www.phoenixcontact.com/in/products/2713670>

MSTBT 2,5 HC/ 3-STP GY7035 - Printed-circuit board connector

2200333

<https://www.phoenixcontact.com/in/products/2200333>



PCB connector, nominal cross section: 2.5 mm², color: light grey, nominal current: 16 A, rated voltage (III/2): 320 V, contact surface: Tin, type of contact: Socket, number of rows: 1, number of positions: 3, product range: MSTBT 2,5 HC/...-STP, pitch: 5 mm, connection method: Screw connection with tension sleeve, conductor/PCB connection direction: 0 °, locking clip: - Locking clip, plug-in system: COMBICON MSTB 2,5 HC, locking: without, mounting: without, type of packaging: packed in cardboard

GMSTBO 2,5 HV/ 2-GL-7,25 THR - PCB header

2199867

<https://www.phoenixcontact.com/in/products/2199867>



PCB headers, nominal cross section: 2.5 mm², color: black, nominal current: 16 A, rated voltage (III/2): 630 V, type of contact: Pin, number of potentials: 2, number of rows: 1, number of positions: 2, number of connections: 2, product range: GMSTBO 2,5 HV, pitch: 7.25 mm, mounting: THR soldering, pin layout: Linear pinning, solder pin [P]: 2.1 mm, number of solder pins per potential: 1, plug-in system: COMBICON MSTB 2,5, Pin connector pattern alignment: Standard, type of packaging: packed in cardboard, Product with pin output on left side

ME MAX 35 2-2 KMGY - Electronic housing



2713670

<https://www.phoenixcontact.com/in/products/2713670>

GMSTBO 2,5 HV/ 2-GR-7,25 THR - PCB header

2199760

<https://www.phoenixcontact.com/in/products/2199760>



PCB headers, nominal cross section: 2.5 mm², color: black, nominal current: 16 A, rated voltage (III/2): 630 V, type of contact: Pin, number of potentials: 2, number of rows: 1, number of positions: 2, number of connections: 2, product range: GMSTBO 2,5 HV, pitch: 7.25 mm, mounting: THR soldering, pin layout: Linear pinning, solder pin [P]: 2.1 mm, number of solder pins per potential: 1, plug-in system: COMBICON MSTB 2,5, Pin connector pattern alignment: Standard, type of packaging: packed in cardboard, Product with pin output on right side

GMSTBT 2,5 HV/2-ST-7,25 GY7035 - Printed-circuit board connector

2199757

<https://www.phoenixcontact.com/in/products/2199757>



PCB connector, nominal cross section: 2.5 mm², color: light grey, nominal current: 16 A, rated voltage (III/2): 1000 V, contact surface: Tin, type of contact: Socket, number of rows: 1, number of positions: 2, product range: GMSTBT 2,5 HV/...-ST, pitch: 7.25 mm, connection method: Screw connection with tension sleeve, conductor/PCB connection direction: 0 °, locking clip: - Locking clip, locking: without, mounting: without, type of packaging: packed in cardboard

ME MAX 35 2-2 KMGY - Electronic housing

2713670

<https://www.phoenixcontact.com/in/products/2713670>



ME MAX B-17,5 KMGY - Filler plugs

2706959

<https://www.phoenixcontact.com/in/products/2706959>



DIN rail housing, Filler plug for unoccupied terminal points, width: 15 mm, height: 21.6 mm, depth: 8.1 mm, color: light grey (7035)

MSTBO 2,5/ 3-G1L KMGY AU - PCB header

1077605

<https://www.phoenixcontact.com/in/products/1077605>



PCB headers, color: light grey, contact surface: Gold, type of contact: Pin, number of rows: 1, number of positions: 3, product range: MSTBO 2,5/..-G1L Au, pitch: 5 mm, mounting: Wave soldering, pin layout: Linear pinning, solder pin [P]: 3.5 mm, number of solder pins per potential: 1, plug-in system: COMBICON MSTB 2,5, Pin connector pattern alignment: Orthogonal, locking: without, type of packaging: packed in cardboard, Product with pin output on left side

ME MAX 35 2-2 KMGY - Electronic housing

2713670

<https://www.phoenixcontact.com/in/products/2713670>

MSTBO 2,5/ 3-G1R KMGY AU - PCB header

1077606

<https://www.phoenixcontact.com/in/products/1077606>



PCB headers, color: light grey, contact surface: Gold, type of contact: Pin, number of rows: 1, number of positions: 3, product range: MSTBO 2,5/...-G1R Au, pitch: 5 mm, mounting: Wave soldering, pin layout: Linear pinning, solder pin [P]: 3.5 mm, number of solder pins per potential: 1, plug-in system: COMBICON MSTB 2,5, Pin connector pattern alignment: Orthogonal, locking: without, type of packaging: packed in cardboard, Product with pin output on right side

MKDSO 1,5/ 4-L-3,5 KMGY - PCB terminal block

2278432

<https://www.phoenixcontact.com/in/products/2278432>



PCB terminal block, nominal current: 8 A, rated voltage (III/2): 160 V, nominal cross section: 1.5 mm², number of potentials: 4, number of rows: 1, number of positions per row: 4, product range: MKDSO 1,5/...-L, pitch: 3.5 mm, connection method: Screw connection with tension sleeve, mounting: Wave soldering, conductor/PCB connection direction: 0 °, color: light grey, Pin layout: Linear pinning, Solder pin [P]: 3 mm, number of solder pins per potential: 1, type of packaging: packed in cardboard. Product with pin output on left side

2713670

<https://www.phoenixcontact.com/in/products/2713670>

MKDSO 1,5/ 4-R-3,5 KMGY - PCB terminal block

2278429

<https://www.phoenixcontact.com/in/products/2278429>



PCB terminal block, nominal current: 8 A, rated voltage (III/2): 160 V, nominal cross section: 1.5 mm², number of potentials: 4, number of rows: 1, number of positions per row: 4, product range: MKDSO 1,5/...-R, pitch: 3.5 mm, connection method: Screw connection with tension sleeve, mounting: Wave soldering, conductor/PCB connection direction: 0 °, color: light grey, Pin layout: Linear pinning, Solder pin [P]: 3 mm, number of solder pins per potential: 1, type of packaging: packed in cardboard. Product with pin output on right side

MKDSO 2,5/ 3-L KMGY - PCB terminal block

2854102

<https://www.phoenixcontact.com/in/products/2854102>



PCB terminal block, nominal current: 24 A, rated voltage (III/2): 400 V, nominal cross section: 2.5 mm², number of potentials: 3, number of rows: 1, number of positions per row: 3, product range: MKDSO 2,5/...-L, pitch: 5 mm, connection method: Screw connection with tension sleeve, mounting: Wave soldering, conductor/PCB connection direction: 0 °, color: light grey, Pin layout: Linear pinning, Solder pin [P]: 3.5 mm, number of solder pins per potential: 1, type of packaging: packed in cardboard. Product with pin output on left side

2713670

<https://www.phoenixcontact.com/in/products/2713670>

MKDSO 2,5/ 3-R KMGY - PCB terminal block

2854092

<https://www.phoenixcontact.com/in/products/2854092>



PCB terminal block, nominal current: 24 A, rated voltage (III/2): 400 V, nominal cross section: 2.5 mm², number of potentials: 3, number of rows: 1, number of positions per row: 3, product range: MKDSO 2,5/...-R, pitch: 5 mm, connection method: Screw connection with tension sleeve, mounting: Wave soldering, conductor/PCB connection direction: 0 °, color: light grey, Pin layout: Linear pinning, Solder pin [P]: 3.5 mm, number of solder pins per potential: 1, type of packaging: packed in cardboard. Product with pin output on right side

MKDSO 2,5 HV/ 2L-7,5 KMGY - PCB terminal block

2199676

<https://www.phoenixcontact.com/in/products/2199676>



PCB terminal block, nominal current: 24 A, rated voltage (III/2): 630 V, nominal cross section: 2.5 mm², number of rows: 1, number of positions per row: 2, product range: MKDSO 2,5 HV/...-L, pitch: 7.5 mm, connection method: Screw connection with tension sleeve, mounting: Wave soldering, conductor/PCB connection direction: 0 °, color: light grey, Pin layout: Linear pinning, Solder pin [P]: 3.5 mm, number of solder pins per potential: 1. Product with pin output on left side

ME MAX 35 2-2 KMGY - Electronic housing

2713670

<https://www.phoenixcontact.com/in/products/2713670>

MKDSO 2,5 HV/ 2R-7,5 KMGY - PCB terminal block

2199773

<https://www.phoenixcontact.com/in/products/2199773>



PCB terminal block, nominal current: 24 A, rated voltage (III/2): 630 V, nominal cross section: 2.5 mm², number of rows: 1, number of positions per row: 2, product range: MKDSO 2,5 HV/..-R, pitch: 7.5 mm, connection method: Screw connection with tension sleeve, mounting: Wave soldering, conductor/PCB connection direction: 0 °, color: light grey, Pin layout: Linear pinning, Solder pin [P]: 2.25 mm, number of solder pins per potential: 1. Product with pin output on right side

FKDSO 2,5/ 3-L KMGY - PCB terminal block

2200318

<https://www.phoenixcontact.com/in/products/2200318>



PCB terminal block, nominal current: 22 A, rated voltage (III/2): 250 V, nominal cross section: 2.5 mm², number of potentials: 3, number of rows: 1, number of positions per row: 3, product range: FKDSO 2,5/..-L, pitch: 5 mm, connection method: Push-in spring connection, mounting: Wave soldering, conductor/PCB connection direction: 0 °, color: light grey, Pin layout: Linear pinning, Solder pin [P]: 3.5 mm, number of solder pins per potential: 1, type of packaging: packed in cardboard. Product with pin output on left side

ME MAX 35 2-2 KMGY - Electronic housing

2713670

<https://www.phoenixcontact.com/in/products/2713670>

FKDSO 2,5/ 3-R KMGY - PCB terminal block

2200317

<https://www.phoenixcontact.com/in/products/2200317>



PCB terminal block, nominal current: 22 A, rated voltage (III/2): 250 V, nominal cross section: 2.5 mm², number of potentials: 3, number of rows: 1, number of positions per row: 3, product range: FKDSO 2,5/...-R, pitch: 5 mm, connection method: Push-in spring connection, mounting: Wave soldering, conductor/PCB connection direction: 0 °, color: light grey, Pin layout: Linear pinning, Solder pin [P]: 3.5 mm, number of solder pins per potential: 1, type of packaging: packed in cardboard. Product with pin output on right side

Accessories

ME FE-CONTACT - Functional ground contact

2908294

<https://www.phoenixcontact.com/in/products/2908294>



DIN rail housing, FE contact with soldering lug, width: 5 mm, height: 15.25 mm, depth: 9.5 mm, color: silver

ME MAX 35 2-2 KMGY - Electronic housing

2713670

<https://www.phoenixcontact.com/in/products/2713670>



ME MAX B-17,5 KMGY - Filler plugs

2706959

<https://www.phoenixcontact.com/in/products/2706959>



DIN rail housing, Filler plug for unoccupied terminal points, width: 15 mm, height: 21.6 mm, depth: 8.1 mm, color: light grey (7035)

ME MAX B-17,5 GN - Filler plugs

2706991

<https://www.phoenixcontact.com/in/products/2706991>



DIN rail housing, Filler plug for unoccupied terminal points, width: 15 mm, height: 21.6 mm, depth: 8.1 mm, color: green (6021)

ME MAX 35 2-2 KMGY - Electronic housing



2713670

<https://www.phoenixcontact.com/in/products/2713670>

HS LC-H-D3/ R1XC1 - Fiber optic

2202313

<https://www.phoenixcontact.com/in/products/2202313>

Multiple light guides, passive, rigid, can be used for the ME, ME-MAX, ME-IO, ME PLC, and EH housing ranges (housing must be processed)



HS LC-H-5X2/ R1XC1 - Fiber optic

2202314

<https://www.phoenixcontact.com/in/products/2202314>

Single light guide, passive, rigid, can be used for the ME, ME-MAX, ME-IO, ME PLC, and EH housing ranges (housing must be processed)



ME MAX 35 2-2 KMGY - Electronic housing

2713670

<https://www.phoenixcontact.com/in/products/2713670>

HS LC-H-D3/ R2XC1-5,08 - Fiber optic

2202315

<https://www.phoenixcontact.com/in/products/2202315>

Multiple light guides, passive, rigid, can be used for the ME, ME-MAX, ME-IO, ME PLC, and EH housing ranges (housing must be processed)



HS LC-H-D2/ R2XC1-2,54 - Fiber optic

2202316

<https://www.phoenixcontact.com/in/products/2202316>

Multiple light guides with glare protection, passive, rigid, can be used for the ME, ME-MAX, ME-IO, ME PLC, and EH housing ranges (housing must be processed)



ME MAX 35 2-2 KMGY - Electronic housing

2713670

<https://www.phoenixcontact.com/in/products/2713670>

HS LC-H-D2/ R2XC2-2,54 - Fiber optic

2202317

<https://www.phoenixcontact.com/in/products/2202317>



Multiple light guides with glare protection, passive, rigid, can be used for the ME, ME-MAX, ME-IO, ME PLC, and EH housing ranges (housing must be processed)

HS LC-H-D2/ R2XC5-2,54 - Fiber optic

2202318

<https://www.phoenixcontact.com/in/products/2202318>



Multiple light guides with glare protection, passive, rigid, can be used for the ME, ME-MAX, ME-IO, ME PLC, and EH housing ranges (housing must be processed)

ME MAX 35 2-2 KMGY - Electronic housing

2713670

<https://www.phoenixcontact.com/in/products/2713670>

HS LC-H-D2/ R2XC10-2,54 - Fiber optic

2202319

<https://www.phoenixcontact.com/in/products/2202319>

Multiple light guides with glare protection, passive, rigid, can be used for the ME, ME-MAX, ME-IO, ME PLC, and EH housing ranges (housing must be processed)



HS LC-H-D2C/ R2XC1-2,54 - Fiber optic

1036658

<https://www.phoenixcontact.com/in/products/1036658>

Multiple light guides with glare protection, passive, rigid, can be used for the ME, ME-MAX, ME-IO, ME PLC, and EH housing ranges (housing must be processed)



ME MAX 35 2-2 KMGY - Electronic housing

2713670

<https://www.phoenixcontact.com/in/products/2713670>

HS LC-H-D2C/ R2XC2-2,54 - Fiber optic

1043044

<https://www.phoenixcontact.com/in/products/1043044>



Multiple light guides with glare protection, passive, rigid, can be used for the ME, ME-MAX, ME-IO, ME PLC, and EH housing ranges (housing must be processed)

HS LC-H-D2C/ R2XC5-2,54 - Fiber optic

1071310

<https://www.phoenixcontact.com/in/products/1071310>



Multiple light guides with glare protection, passive, rigid, can be used for the ME, ME-MAX, ME-IO, ME PLC, and EH housing ranges (housing must be processed)

ME MAX 35 2-2 KMGY - Electronic housing

2713670

<https://www.phoenixcontact.com/in/products/2713670>

HS LC-H-D2C/ R2XC10-2,54 - Fiber optic

1071314

<https://www.phoenixcontact.com/in/products/1071314>

Multiple light guides with glare protection, passive, rigid, can be used for the ME, ME-MAX, ME-IO, ME PLC, and EH housing ranges (housing must be processed)



HS LC-H-D2/ R4XC5-2,54 - Fiber optic

2202321

<https://www.phoenixcontact.com/in/products/2202321>

Multiple light guides with glare protection, passive, rigid, can be used for the ME, ME-MAX, ME-IO, ME PLC, and EH housing ranges (housing must be processed)



ME MAX 35 2-2 KMGY - Electronic housing

2713670

<https://www.phoenixcontact.com/in/products/2713670>

HS LC-H-D2C/ R4XC5-2,54 - Fiber optic

1071318

<https://www.phoenixcontact.com/in/products/1071318>



Multiple light guides with glare protection, passive, rigid, can be used for the ME, ME-MAX, ME-IO, ME PLC, and EH housing ranges (housing must be processed)

HS LC-H-D2/ R4XC9-2,54 - Fiber optic

2202322

<https://www.phoenixcontact.com/in/products/2202322>



Multiple light guides with glare protection, passive, rigid, can be used for the ME, ME-MAX, ME-IO, ME PLC, and EH housing ranges (housing must be processed)

ME MAX 35 2-2 KMGY - Electronic housing

2713670

<https://www.phoenixcontact.com/in/products/2713670>

HS LC-H-D2C/ R4XC9-2,54 - Fiber optic

1071321

<https://www.phoenixcontact.com/in/products/1071321>



Multiple light guides with glare protection, passive, rigid, can be used for the ME, ME-MAX, ME-IO, ME PLC, and EH housing ranges (housing must be processed)

HS LC-H-D2/ R4XC10-2,54 - Fiber optic

2202323

<https://www.phoenixcontact.com/in/products/2202323>



Multiple light guides with glare protection, passive, rigid, can be used for the ME, ME-MAX, ME-IO, ME PLC, and EH housing ranges (housing must be processed)

ME MAX 35 2-2 KMGY - Electronic housing

2713670

<https://www.phoenixcontact.com/in/products/2713670>

HS LC-H-D2C/ R4XC10-2,54 - Fiber optic

1071329

<https://www.phoenixcontact.com/in/products/1071329>



Multiple light guides with glare protection, passive, rigid, can be used for the ME, ME-MAX, ME-IO, ME PLC, and EH housing ranges (housing must be processed)

HS LC-H-D2/ R4XC2-2,54 - Fiber optic

2202320

<https://www.phoenixcontact.com/in/products/2202320>



Multiple light guides with glare protection, passive, rigid, can be used for the ME, ME-MAX, ME-IO, ME PLC, and EH housing ranges (housing must be processed)

ME MAX 35 2-2 KMGY - Electronic housing

2713670

<https://www.phoenixcontact.com/in/products/2713670>

HS LC-H-D2C/ R4XC2-2,54 - Fiber optic

1071316

<https://www.phoenixcontact.com/in/products/1071316>



Multiple light guides with glare protection, passive, rigid, can be used for the ME, ME-MAX, ME-IO, ME PLC, and EH housing ranges (housing must be processed)

ME MF 17,5 - Base latch

2908281

<https://www.phoenixcontact.com/in/products/2908281>

Metal foot catch with spring, for intermediate elements.



ME MAX 35 2-2 KMGY - Electronic housing

2713670

<https://www.phoenixcontact.com/in/products/2713670>



ME BUS FE CONTACT - Functional ground contact

2278076

<https://www.phoenixcontact.com/in/products/2278076>

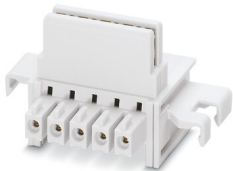


DIN rail housing, FE contact, width: 5 mm, height: 15.25 mm, depth: 9.5 mm, color: silver

ME 17,5 TBUS 1,5/ 5-ST-3,81 KMGY - DIN rail bus connectors

2713645

<https://www.phoenixcontact.com/in/products/2713645>



DIN rail connector, color: light grey, nominal current: 8 A (parallel contacts), rated voltage (III/2): 125 V, number of positions: 5, pitch: 3.81 mm, mounting: DIN rail mounting, locking: without, mounting: without, type of packaging: packed in cardboard, Item with gold-plated contacts, bus connectors for connecting with electronics housings, 5 parallel contacts

ME MAX 35 2-2 KMGY - Electronic housing

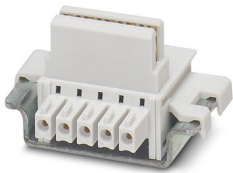
2713670

<https://www.phoenixcontact.com/in/products/2713670>

ME 17,5 TBUS 1,5/4P1S KMGY - DIN rail bus connectors

2201731

<https://www.phoenixcontact.com/in/products/2201731>

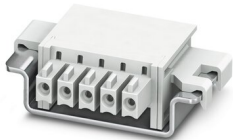


DIN rail connector, color: light grey, nominal current: 8 A, 8 A (parallel contacts) (Serial contacts), rated voltage (III/2): 50 V, number of positions: 5, pitch: 3.81 mm, mounting: DIN rail mounting, locking: without, mounting: without, type of packaging: packed in cardboard, Item with gold-plated contacts, bus connectors for connecting with electronics housings, 4 parallel contacts/1 serial contact

ME 17,5 TBUS ADAPTER KMGY - DIN rail bus connectors

2201757

<https://www.phoenixcontact.com/in/products/2201757>



DIN rail bus adapter for ME and ME-MAX, design width: 17.5 mm, 5 parallel positions, color: light gray (similar to RAL 7035)

ME MAX 35 2-2 KMGY - Electronic housing

2713670

<https://www.phoenixcontact.com/in/products/2713670>

PCO 17,5-L KMGY - Power connector

2201684

<https://www.phoenixcontact.com/in/products/2201684>



Power connector for ME-MAX housing, design width: 17.5 mm, 2 positions; used to transmit a total current of up to 42 A at 60 V DC.

ME MAX TBUS BS KMGY - Filler plugs

2199650

<https://www.phoenixcontact.com/in/products/2199650>



DIN rail housing, Filler plugs for TBUS recess, width: 5.8 mm, height: 30 mm, depth: 6.6 mm, color: light grey (7035)

ME MAX 35 2-2 KMGY - Electronic housing

2713670

<https://www.phoenixcontact.com/in/products/2713670>

MC 1,5/ 5-ST-3,81 AU - PCB connector

1860883

<https://www.phoenixcontact.com/in/products/1860883>



PCB connector, nominal cross section: 1.5 mm², color: green, nominal current: 8 A, rated voltage (III/2): 160 V, contact surface: Gold, type of contact: Socket, number of potentials: 5, number of rows: 1, number of positions: 5, number of connections: 5, product range: MC 1,5/...-ST, pitch: 3.81 mm, connection method: Screw connection with tension sleeve, screw head form: L Slotted, conductor/PCB connection direction: 0 °, pin layout: Linear three-way pinning, plug-in system: COMBICON MC 1,5, locking: without, mounting: without, type of packaging: packed in cardboard

IMC 1,5/ 5-ST-3,81 - Printed-circuit board connector

1857919

<https://www.phoenixcontact.com/in/products/1857919>



PCB connector, nominal cross section: 1.5 mm², color: green, nominal current: 8 A, rated voltage (III/2): 160 V, contact surface: Tin, type of contact: Pin, number of potentials: 5, number of rows: 1, number of positions: 5, number of connections: 5, product range: IMC 1,5/...-ST, pitch: 3.81 mm, connection method: Screw connection with tension sleeve, screw head form: L Slotted, conductor/PCB connection direction: 0 °, plug-in system: COMBICON MC 1,5, locking: without, mounting: without, type of packaging: packed in cardboard

ME MAX 35 2-2 KMGY - Electronic housing

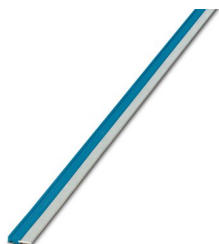
2713670

<https://www.phoenixcontact.com/in/products/2713670>

PBR 42A BU - Cross connection

2201916

<https://www.phoenixcontact.com/in/products/2201916>



Jumper for PCO power connector in ME-MAX housing, color: blue (similar to RAL 5015)

PBR 42A GY - Cross connection

2201917

<https://www.phoenixcontact.com/in/products/2201917>



Jumper for PCO power connector in ME-MAX housing, color: gray (similar to RAL 7042)

ME MAX 35 2-2 KMGY - Electronic housing

2713670

<https://www.phoenixcontact.com/in/products/2713670>

PBR 42A RD - Cross connection

2201915

<https://www.phoenixcontact.com/in/products/2201915>



Jumper for PCO power connector in ME-MAX housing, color: red (similar to RAL 3000)

ME-SAS - Shield connection clamp

2853899

<https://www.phoenixcontact.com/in/products/2853899>



Shield connection clamp for terminal points starting from 2.5 mm²

ME MAX 35 2-2 KMGY - Electronic housing



2713670

<https://www.phoenixcontact.com/in/products/2713670>

CR MSTBO-G1 - Coding section

2199618

<https://www.phoenixcontact.com/in/products/2199618>

Coding section, inserted into the recess in the header or the inverted plug, red insulating material



Phoenix Contact 2023 © - all rights reserved

<https://www.phoenixcontact.com>

PHOENIX CONTACT (I) Pvt. Ltd.

A-58/2, Okhla Industrial Area, Phase - II, New Delhi-110 020

+91.1275.71420

info@phoenixcontact.co.in