

PTFIX 1,5-NS15A - DIN rail adapter

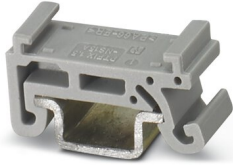


1049500

<https://www.phoenixcontact.com/in/products/1049500>

Please be informed that the data shown in this PDF document is generated from our Online Catalog. Please find the complete data in the user documentation. Our General Terms of Use for Downloads are valid.

DIN rail adapter, length: 21.6 mm, width: 8 mm, height: 10.85 mm



Commercial Data

Item number	1049500
Packing unit	30 pc
Minimum order quantity	30 pc
Sales Key	BEA
Product Key	BEA14Z
Catalog Page	Page 428 (C-1-2019)
GTIN	4055626662213
Weight per Piece (including packing)	0.895 g
Weight per Piece (excluding packing)	0.8 g
Customs tariff number	39269097
Country of origin	PL

PTFIX 1,5-NS15A - DIN rail adapter



1049500

<https://www.phoenixcontact.com/in/products/1049500>

Technical Data

Product properties

Product type	Mounting material
--------------	-------------------

Dimensions

Width	8 mm
Height	10.85 mm
Length	21.6 mm

Environmental and real-life conditions

Ambient conditions

Ambient temperature (operation)	-60 °C ... 105 °C (max. short-term operating temperature RTI Elec.)
Ambient temperature (storage/transport)	-25 °C ... 60 °C (for a short time, not exceeding 24 h, -60 °C to +70 °C)
Ambient temperature (assembly)	-5 °C ... 70 °C
Ambient temperature (actuation)	-5 °C ... 70 °C
Permissible humidity (storage/transport)	30 % ... 70 %


PTFIX 1,5-NS15A - DIN rail adapter




1049500

<https://www.phoenixcontact.com/in/products/1049500>

Approvals

 CSA Approval ID: 13631				
	Nominal Voltage U_N	Nominal Current I_N	Cross Section AWG	Cross Section mm^2
	300 V	20 A	26 - 12	-
	150 V	20 A	26 - 12	-
	300 V	10 A	26 - 12	-

 cULus Recognized Approval ID: E60425				
	Nominal Voltage U_N	Nominal Current I_N	Cross Section AWG	Cross Section mm^2
	300 V	20 A	26 - 12	-
	150 V	20 A	26 - 12	-
	500 V	20 A	26 - 12	-
	300 V	10 A	26 - 12	-

PTFIX 1,5-NS15A - DIN rail adapter



1049500

<https://www.phoenixcontact.com/in/products/1049500>

Classifications

ECLASS

ECLASS-11.0	27370419
ECLASS-12.0	27370419
ECLASS-13.0	27370419

ETIM

ETIM 8.0	EC001024
----------	----------

UNSPSC

UNSPSC 21.0	39121400
-------------	----------

PTFIX 1,5-NS15A - DIN rail adapter



1049500

<https://www.phoenixcontact.com/in/products/1049500>

Environmental Product Compliance

China RoHS	Environmentally friendly use period: unlimited = EFUP-e
	No hazardous substances above threshold values

Phoenix Contact 2023 © - all rights reserved
<https://www.phoenixcontact.com>

PHOENIX CONTACT (I) Pvt. Ltd.
A-58/2, Okhla Industrial Area, Phase - II, New Delhi-110 020

+91.1275.71420
info@phoenixcontact.co.in