

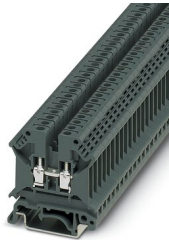
TB 4 EI - Feed-through terminal block



3246023

<https://www.phoenixcontact.com/in/products/3246023>

Please be informed that the data shown in this PDF document is generated from our Online Catalog. Please find the complete data in the user documentation. Our General Terms of Use for Downloads are valid.



Feed-through terminal block, nom. voltage: 800 V, nominal current: 32 A, number of connections: 2, connection method: Screw connection, Rated cross section: 4 mm², cross section: 0.5 mm² - 6 mm², mounting type: NS 35/7,5, NS 35/15, NS 32, color: dark gray

Commercial Data

Item number	3246023
Packing unit	50 pc
Minimum order quantity	50 pc
Sales Key	BE1
Product Key	BE1411
GTIN	4046356599665
Weight per Piece (including packing)	8.301 g
Weight per Piece (excluding packing)	8.301 g
Customs tariff number	85369010
Country of origin	IN

TB 4 EI - Feed-through terminal block



3246023

<https://www.phoenixcontact.com/in/products/3246023>

Technical Data

Product properties

Product type	Feed-through terminal block
Number of connections	2
Number of rows	1
Potentials	1

Insulation characteristics

Overvoltage category	III
Degree of pollution	3

Electrical properties

Rated surge voltage	8 kV
Maximum power dissipation for nominal condition	1.02 W

Connection data

Number of connections per level	2
Nominal cross section	4 mm ²

Level 1 above 1 below 1

Screw thread	M3
Tightening torque	0.5 ... 0.6 Nm
Stripping length	8 mm
Internal cylindrical gage	A4
Connection in acc. with standard	IEC 60947-7-1
Conductor cross section rigid	0.5 mm ² ... 6 mm ²
Cross section AWG	20 ... 10 (converted acc. to IEC)
Conductor cross section flexible	0.5 mm ² ... 4 mm ²
Conductor cross section, flexible [AWG]	20 ... 12 (converted acc. to IEC)
Conductor cross-section flexible (ferrule without plastic sleeve)	0.5 mm ² ... 4 mm ²
Flexible conductor cross section (ferrule with plastic sleeve)	0.5 mm ² ... 2.5 mm ²
2 conductors with same cross section, solid	0.5 mm ² ... 1.5 mm ²
2 conductors with the same cross-section AWG rigid	50 ... 16 (converted acc. to IEC)
2 conductors with same cross section, flexible	0.5 mm ² ... 1.5 mm ²
2 conductors with the same cross-section AWG flexible	20 ... 16 (converted acc. to IEC)
2 conductors with same cross section, flexible, with ferrule without plastic sleeve	0.5 mm ² ... 1.5 mm ²
Nominal current	32 A
Maximum load current	32 A
Nominal voltage	800 V (in the case of enclosed clamping space)
Note	Checked at 1100 V
Nominal cross section	4 mm ²

Dimensions

TB 4 EI - Feed-through terminal block



3246023

<https://www.phoenixcontact.com/in/products/3246023>

Width	6.2 mm
End cover width	1.8 mm
Height NS 35/15	54.5 mm
Height NS 35/7,5	47 mm
Height	1.85 "
Height NS 32	52 mm
Length	42.5 mm

Material specifications

Color	dark gray
Flammability rating according to UL 94	V2
Insulating material group	I
Insulating material	PA
Temperature index of insulation material (DIN EN 60216-1 (VDE 0304-21))	125 °C
Relative insulation material temperature index (Elec., UL 746 B)	125 °C

Electrical tests

Surge voltage test

Test voltage setpoint	9.8 kV
Result	Test passed

Temperature-rise test

Requirement temperature-rise test	Increase in temperature \leq 45 K
Result	Test passed
Short-time withstand current 4 mm ²	0.48 kA
Result	Test passed

Power-frequency withstand voltage

Test voltage setpoint	2 kV
Result	Test passed

Mechanical properties

Mechanical data

Open side panel	Yes
-----------------	-----

Mechanical tests

Mechanical strength

Result	Test passed
--------	-------------

Attachment on the carrier

DIN rail/fixing support	NS 32/NS 35
Test force setpoint	1 N
Result	Test passed

TB 4 EI - Feed-through terminal block



3246023

<https://www.phoenixcontact.com/in/products/3246023>

Test for conductor damage and slackening

Rotation speed	10 rpm
Revolutions	135
Conductor cross section/weight	0.5 mm ² / 0.3 kg
	4 mm ² / 0.9 kg
	6 mm ² / 1.4 kg
Result	Test passed

Environmental and real-life conditions

Needle-flame test

Time of exposure	30 s
Result	Test passed

Oscillation/broadband noise

Specification	DIN EN 50155 (VDE 0115-200):2008-03
Spectrum	Service life test category 1, class B, body mounted
Frequency	$f_1 = 5 \text{ Hz}$ to $f_2 = 150 \text{ Hz}$
ASD level	1.857 (m/s ²)/Hz
Acceleration	0.8g
Test duration per axis	5 h
Test directions	X-, Y- and Z-axis
Result	Test passed

Shocks

Specification	DIN EN 50155 (VDE 0115-200):2008-03
Pulse shape	Half-sine
Acceleration	5g
Shock duration	30 ms
Number of shocks per direction	3
Test directions	X-, Y- and Z-axis (pos. and neg.)
Result	Test passed

Ambient conditions

Ambient temperature (operation)	-60 °C ... 105 °C (max. short-term operating temperature RTI Elec.)
Ambient temperature (storage/transport)	-25 °C ... 60 °C (for a short time, not exceeding 24 h, -60 °C to +70 °C)
Ambient temperature (assembly)	-5 °C ... 70 °C
Ambient temperature (actuation)	-5 °C ... 70 °C
Permissible humidity (storage/transport)	30 % ... 70 %

Standards and regulations

Connection in acc. with standard	IEC 60947-7-1
----------------------------------	---------------

Mounting

TB 4 EI - Feed-through terminal block



3246023

<https://www.phoenixcontact.com/in/products/3246023>

Mounting type	NS 35/7,5
	NS 35/15
	NS 32

TB 4 EI - Feed-through terminal block

3246023

<https://www.phoenixcontact.com/in/products/3246023>



Drawings

Circuit diagram




TB 4 EI - Feed-through terminal block



3246023

<https://www.phoenixcontact.com/in/products/3246023>

Approvals

 cULus Recognized Approval ID: E60425		Nominal Voltage U_N	Nominal Current I_N	Cross Section AWG	Cross Section mm^2
		600 V	30 A	20 - 10	-
		600 V	30 A	20 - 10	-

TB 4 EI - Feed-through terminal block



3246023

<https://www.phoenixcontact.com/in/products/3246023>

Classifications

ECLASS

ECLASS-11.0

27141120

ETIM

ETIM 7.0

EC000897

UNSPSC

UNSPSC 21.0

39121410

TB 4 EI - Feed-through terminal block



3246023

<https://www.phoenixcontact.com/in/products/3246023>

Environmental Product Compliance

China RoHS	Environmentally friendly use period: unlimited = EFUP-e
	No hazardous substances above threshold values

TB 4 EI - Feed-through terminal block

3246023

<https://www.phoenixcontact.com/in/products/3246023>



Accessories

SCBI 10-6 - Fixed bridge

3246120

<https://www.phoenixcontact.com/in/products/3246120>

Fixed bridge, number of positions: 10, color: silver



INB 10-6 - Insertion bridge

3246188

<https://www.phoenixcontact.com/in/products/3246188>

Insertion bridge, Bridging in the terminal point, pitch: 6 mm, number of positions: 10, color: gray



TB 4 EI - Feed-through terminal block

3246023

<https://www.phoenixcontact.com/in/products/3246023>

D-TB 4/10 E - End cover

3246104

<https://www.phoenixcontact.com/in/products/3246104>

End cover, length: 42.5 mm, width: 1.5 mm, height: 35.9 mm, color: dark gray



TS-TB - Separating plate

3062838

<https://www.phoenixcontact.com/in/products/3062838>

Separating plate, for electrical isolation of neighboring bridges in the terminal center, length: 22 mm, height: 22 mm, color: dark gray



TB 4 EI - Feed-through terminal block

3246023

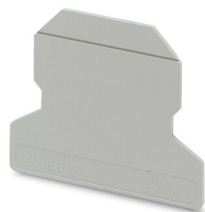
<https://www.phoenixcontact.com/in/products/3246023>



ATP-TB - Partition plate

3046272

<https://www.phoenixcontact.com/in/products/3046272>



Partition plate, length: 56 mm, width: 3 mm, height: 45.7 mm, color: dark gray

TPS 3/10/4 - Female test connector

3246230

<https://www.phoenixcontact.com/in/products/3246230>



Female test connector, for 2.3 mm test plugs, for screwing into the bridge shaft, number of positions: 1, fuse type: , mounting type: , , color: silver

TB 4 EI - Feed-through terminal block

3246023

<https://www.phoenixcontact.com/in/products/3246023>



SZS 0,6X3,5 VDE - Screwdriver

1212602

<https://www.phoenixcontact.com/in/products/1212602>



Screwdriver, slot-headed, VDE insulated, size: 0.6 x 3.5 x 100 mm, 2-component grip, with non-slip grip

E/TB - End clamp

3246966

<https://www.phoenixcontact.com/in/products/3246966>



End clamp, for assembly on NS 32 or NS 35/7.5 DIN rail

TB 4 EI - Feed-through terminal block

3246023

<https://www.phoenixcontact.com/in/products/3246023>



NS 32 PERF 2000MM-VPE 10 - DIN rail perforated

1201002

<https://www.phoenixcontact.com/in/products/1201002>



DIN rail perforated, acc. to EN 60715, material: Steel, galvanized, passivated with a thick layer, G profile, color: silver, Pack of 10 (20 m)

NS 32 UNPERF 2000MM-VPE 10 - DIN rail, unperforated

1201015

<https://www.phoenixcontact.com/in/products/1201015>



DIN rail, unperforated, acc. to EN 60715, material: Steel, galvanized, passivated with a thick layer, G profile, color: silver, Pack of 10 (20 m)

TB 4 EI - Feed-through terminal block

3246023

<https://www.phoenixcontact.com/in/products/3246023>



MPS-MT - Test plugs

0201744

<https://www.phoenixcontact.com/in/products/0201744>



Test plugs, with solder connection up to 1 mm² conductor cross section, number of positions: 1, fuse type: , mounting type: , , color: gray

MPS-IH WH - Insulating sleeve

0201663

<https://www.phoenixcontact.com/in/products/0201663>

Insulating sleeve, fuse type: , mounting type: , , color: white



TB 4 EI - Feed-through terminal block

3246023

<https://www.phoenixcontact.com/in/products/3246023>



MPS-IH RD - Insulating sleeve

0201676

<https://www.phoenixcontact.com/in/products/0201676>

Insulating sleeve, fuse type: , mounting type: , , color: red

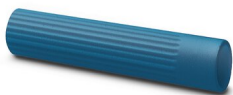


MPS-IH BU - Insulating sleeve

0201689

<https://www.phoenixcontact.com/in/products/0201689>

Insulating sleeve, fuse type: , mounting type: , , color: blue



TB 4 EI - Feed-through terminal block

3246023

<https://www.phoenixcontact.com/in/products/3246023>



MPS-IH YE - Insulating sleeve

0201692

<https://www.phoenixcontact.com/in/products/0201692>

Insulating sleeve, fuse type: , mounting type: , , color: yellow



MPS-IH GN - Insulating sleeve

0201702

<https://www.phoenixcontact.com/in/products/0201702>

Insulating sleeve, fuse type: , mounting type: , , color: green



TB 4 EI - Feed-through terminal block

3246023

<https://www.phoenixcontact.com/in/products/3246023>



MPS-IH GY - Insulating sleeve

0201728

<https://www.phoenixcontact.com/in/products/0201728>

Insulating sleeve, fuse type: , mounting type: , , color: gray



MPS-IH BK - Insulating sleeve

0201731

<https://www.phoenixcontact.com/in/products/0201731>

Insulating sleeve, fuse type: , mounting type: , , color: black



Phoenix Contact 2023 © - all rights reserved
<https://www.phoenixcontact.com>

PHOENIX CONTACT (I) Pvt. Ltd.
A-58/2, Okhla Industrial Area, Phase - II, New Delhi-110 020

+91.1275.71420
info@phoenixcontact.co.in