

# VS-09-ST-DSUB-EG - Contact insert



1688793

<https://www.phoenixcontact.com/in/products/1688793>

Please be informed that the data shown in this PDF document is generated from our Online Catalog. Please find the complete data in the user documentation. Our General Terms of Use for Downloads are valid.

D-SUB contact insert, shell size 1, with nine signal contacts, type of contact pin, with solder cup, straight, fixing with a 3 mm hole, for panel mounting frame and sleeve housing VS-09-...



## Your advantages

- Compatible with IP67 sleeve housing and panel-mount frame
- Easy assembly
- D-SUB 9 connection

## Commercial Data

Item number	1688793
Packing unit	10 pc
Minimum order quantity	10 pc
Sales Key	ABN
Product Key	ABNCAA
Catalog Page	Page 210 (C-2-2013)
GTIN	4017918822927
Weight per Piece (including packing)	10.704 g
Weight per Piece (excluding packing)	5.23 g
Customs tariff number	85366990
Country of origin	DE

# VS-09-ST-DSUB-EG - Contact insert

1688793

<https://www.phoenixcontact.com/in/products/1688793>

## Technical Data

### Product properties

Type	D-SUB
Product type	Male insert
Number of positions	9
Connection profile	D-SUB 9
Type	Male
Shielded	no

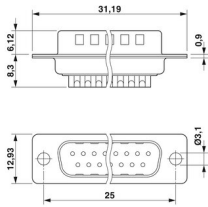
### Insulation characteristics

Overvoltage category	III
Degree of pollution	2

### Electrical properties

Rated voltage in acc. with IEC 61076-2-101	400 V
Rated voltage (III/3)	125 V
Rated surge voltage	1 kV
Rated current	5 A (at 20 °C)
Test voltage	1200 V
Transmission medium	Copper

### Dimensions

Dimensional drawing	
Width	14.4 mm
Height	31.19 mm
Length	12.93 mm

### Material specifications

Flammability rating according to UL 94	V0
Contact material	Copper alloy
Contact surface material	Hard gold-plated over nickel
Contact carrier material	PBT
Housing material	Steel, tin-plated

### Mechanical properties

#### Mechanical data

Insertion/withdrawal cycles	≥ 50
-----------------------------	------

# VS-09-ST-DSUB-EG - Contact insert



1688793

<https://www.phoenixcontact.com/in/products/1688793>

Insertion force per signal contact	≤ 3.40 N
------------------------------------	----------

## Environmental and real-life conditions

### Ambient conditions

Degree of protection	IP20
Ambient temperature (operation)	-55 °C ... 125 °C

## Mounting

Mounting type	Hole
---------------	------

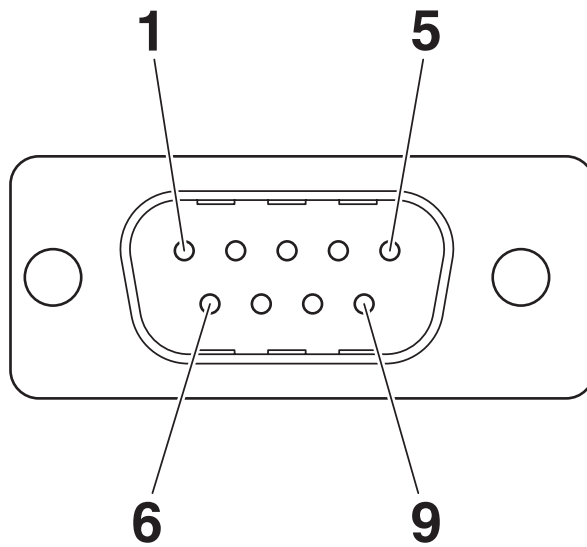
# VS-09-ST-DSUB-EG - Contact insert

1688793

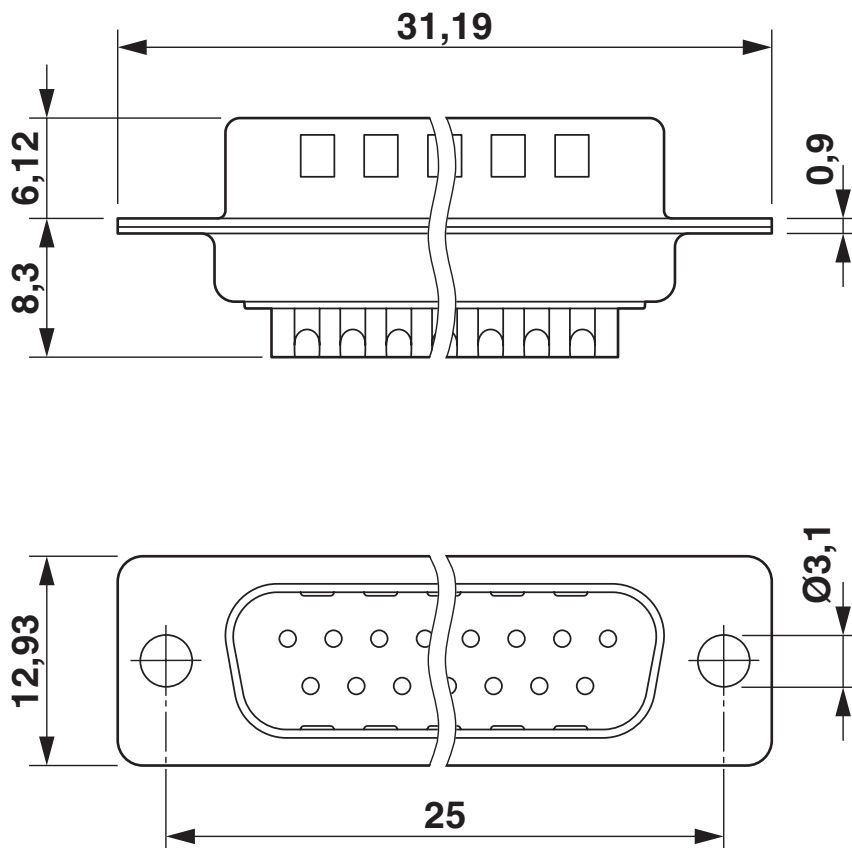
<https://www.phoenixcontact.com/in/products/1688793>

## Drawings

Schematic diagram



Dimensional drawing



D-SUB contact insert

# VS-09-ST-DSUB-EG - Contact insert



1688793

<https://www.phoenixcontact.com/in/products/1688793>

## Approvals



**UL Recognized**

Approval ID: FILE E 118976



**EAC**

Approval ID: B.01687

# VS-09-ST-DSUB-EG - Contact insert



1688793

<https://www.phoenixcontact.com/in/products/1688793>

## Classifications

### ECLASS

ECLASS-11.0	27440217
ECLASS-12.0	27440217
ECLASS-13.0	27440217

### ETIM

ETIM 8.0	EC000438
----------	----------

### UNSPSC

UNSPSC 21.0	39121400
-------------	----------

# VS-09-ST-DSUB-EG - Contact insert



1688793

<https://www.phoenixcontact.com/in/products/1688793>

## Environmental Product Compliance

REACH SVHC	Lead 7439-92-1
China RoHS	Environmentally Friendly Use Period = 50 years
	For information on hazardous substances, refer to the manufacturer's declaration available under "Downloads"

# VS-09-ST-DSUB-EG - Contact insert

1688793

<https://www.phoenixcontact.com/in/products/1688793>

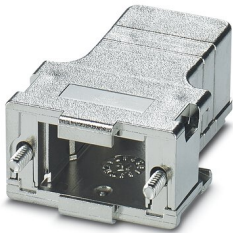


## Accessories

### CUC-DST-GPME-S/DSSC9 - D-SUB sleeve housings

1419705

<https://www.phoenixcontact.com/in/products/1419705>



D-SUB sleeve housings, degree of protection: IP20, material: ABS, metal-plated, cable outlet: straight, housing size: 1, color: Bare metallic

---

### CUC-DST-GPME-A/DSSC9 - D-SUB sleeve housings

1419706

<https://www.phoenixcontact.com/in/products/1419706>



D-SUB sleeve housings, degree of protection: IP20, material: ABS, metal-plated, cable outlet: angled, housing size: 1, color: Bare metallic



# VS-09-ST-DSUB-EG - Contact insert

1688793

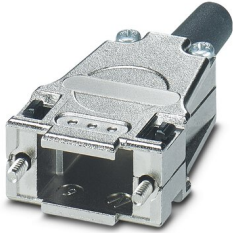
<https://www.phoenixcontact.com/in/products/1688793>



## CUC-DST-GZNI-S/DSSC9 - D-SUB sleeve housings

1419722

<https://www.phoenixcontact.com/in/products/1419722>



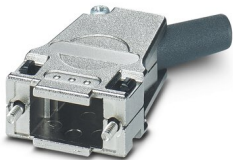
D-SUB sleeve housings, degree of protection: IP20, material: Zinc die-cast, cable outlet: straight, housing size: 1, color: Bare metallic

---

## CUC-DST-GZNI-A/DSSC9 - D-SUB sleeve housings

1419723

<https://www.phoenixcontact.com/in/products/1419723>



D-SUB sleeve housings, degree of protection: IP20, material: Zinc die-cast, cable outlet: angled, housing size: 1, color: Bare metallic

## VS-09-ST-DSUB-EG - Contact insert

1688793

<https://www.phoenixcontact.com/in/products/1688793>



## VS-09-T-2M16 - D-SUB sleeve housings

1688353

<https://www.phoenixcontact.com/in/products/1688353>



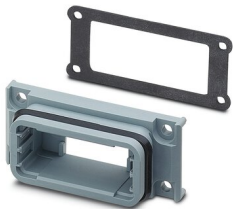
D-SUB sleeve housings, degree of protection: IP67, material: PA, cable outlet: angled, housing size: 1, color: gray

---

## VS-09-A - Panel mounting frames

1688366

<https://www.phoenixcontact.com/in/products/1688366>



D-SUB panel mounting frame, shell size 1, IP67 degree of protection

## VS-09-ST-DSUB-EG - Contact insert

1688793

<https://www.phoenixcontact.com/in/products/1688793>



## CUC-SCHRAUBE-5,5:360 - Screw

1421711

<https://www.phoenixcontact.com/in/products/1421711>

Screw, design: Hexagonal, color: Bare metallic



---

## VS-09-BU-DSUB-EG - Contact insert

1688803

<https://www.phoenixcontact.com/in/products/1688803>

D-SUB contact insert, shell size 1, with nine signal contacts, type of contact socket, with solder cup, straight, fixing with a 3 mm hole, for panel mounting frame and sleeve housing VS-09-...



---

Phoenix Contact 2023 © - all rights reserved  
<https://www.phoenixcontact.com>

PHOENIX CONTACT (I) Pvt. Ltd.  
A-58/2, Okhla Industrial Area, Phase - II, New Delhi-110 020

+91.1275.71420  
[info@phoenixcontact.co.in](mailto:info@phoenixcontact.co.in)