

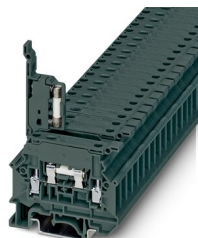
TB 4-HESI (5X20) EI - Fuse modular terminal block



3075773

<https://www.phoenixcontact.com/in/products/3075773>

Please be informed that the data shown in this PDF document is generated from our Online Catalog. Please find the complete data in the user documentation. Our General Terms of Use for Downloads are valid.



Fuse modular terminal block, fuse type: G / 5 x 20, nom. voltage: 500 V, nominal current: 6.3 A, connection method: Screw connection, cross section: 0.5 mm²- 6 mm², mounting type: NS 35/7,5, NS 35/15, NS 32, color: dark gray

Commercial Data

Item number	3075773
Packing unit	1 pc
Minimum order quantity	1 pc
Sales Key	BE1
Product Key	BE1434
GTIN	4046356528832
Weight per Piece (including packing)	13.334 g
Weight per Piece (excluding packing)	13.334 g
Country of origin	IN

TB 4-HESI (5X20) EI - Fuse modular terminal block



3075773

<https://www.phoenixcontact.com/in/products/3075773>

Technical Data

Product properties

Product type	Fuse terminal block
Number of connections	2
Number of rows	1
Potentials	1

Insulation characteristics

Overvoltage category	III
Degree of pollution	3

Electrical properties

Rated surge voltage	6 kV
Maximum power dissipation for nominal condition	1.31 W
Fuse	G / 5 x 20

Connection data

Level 1 above 1 below 1

Screw thread	M3
Tightening torque	0.5 ... 0.6 Nm
Stripping length	9 mm
Connection in acc. with standard	IEC 60947-7-1/IEC 60947-7-3
Conductor cross section rigid	0.5 mm ² ... 6 mm ²
Cross section AWG	20 ... 10 (converted acc. to IEC)
Conductor cross section flexible	0.5 mm ² ... 4 mm ²
Conductor cross section, flexible [AWG]	20 ... 12 (converted acc. to IEC)
Conductor cross-section flexible (ferrule without plastic sleeve)	0.5 mm ² ... 2.5 mm ²
Flexible conductor cross section (ferrule with plastic sleeve)	0.5 mm ² ... 1.5 mm ²
2 conductors with same cross section, solid	0.5 mm ² ... 1.5 mm ²
2 conductors with same cross section, flexible	0.5 mm ² ... 1.5 mm ²
2 conductors with same cross section, flexible, with ferrule without plastic sleeve	0.5 mm ² ... 1.5 mm ²
2 conductors with the same cross section, flexible, with TWIN ferrule with plastic sleeve	0.5 mm ² ... 1.5 mm ²
Nominal current	6.3 A (the current is determined by the fuse used)
Maximum load current	6.3 A
Nominal voltage	500 V (the voltage is determined by the fuse used)

Dimensions

Width	8.2 mm
Height NS 35/15	57.5 mm
Height NS 35/7,5	50 mm
Height NS 32	55 mm

TB 4-HESI (5X20) EI - Fuse modular terminal block



3075773

<https://www.phoenixcontact.com/in/products/3075773>

Length	58 mm
--------	-------

Material specifications

Color	dark gray
Flammability rating according to UL 94	V2
Insulating material group	I
Insulating material	PA
Temperature index of insulation material (DIN EN 60216-1 (VDE 0304-21))	125 °C
Relative insulation material temperature index (Elec., UL 746 B)	125 °C

Mechanical properties

Mechanical data

Open side panel	Yes
-----------------	-----

Environmental and real-life conditions

Oscillation/broadband noise

Specification	DIN EN 50155 (VDE 0115-200):2008-03
Spectrum	Service life test category 1, class B, body mounted
Frequency	$f_1 = 5 \text{ Hz}$ to $f_2 = 150 \text{ Hz}$
ASD level	0.02g ² /Hz
Acceleration	0.8g
Test duration per axis	5 h
Test directions	X-, Y- and Z-axis
Result	Test passed

Shocks

Specification	DIN EN 50155 (VDE 0115-200):2008-03
Pulse shape	Half-sine
Acceleration	5g
Shock duration	30 ms
Number of shocks per direction	3
Test directions	X-, Y- and Z-axis (pos. and neg.)
Result	Test passed

Ambient conditions

Ambient temperature (operation)	-60 °C ... 105 °C (max. short-term operating temperature RTI Elec.)
Ambient temperature (storage/transport)	-25 °C ... 60 °C (for a short time, not exceeding 24 h, -60 °C to +70 °C)
Ambient temperature (assembly)	-5 °C ... 70 °C
Ambient temperature (actuation)	-5 °C ... 70 °C
Permissible humidity (storage/transport)	30 % ... 70 %

Standards and regulations

TB 4-HESI (5X20) EI - Fuse modular terminal block



3075773

<https://www.phoenixcontact.com/in/products/3075773>

Connection in acc. with standard	IEC 60947-7-1/IEC 60947-7-3
----------------------------------	-----------------------------

Mounting

Mounting type	NS 35/7,5
	NS 35/15
	NS 32

TB 4-HESI (5X20) EI - Fuse modular terminal block

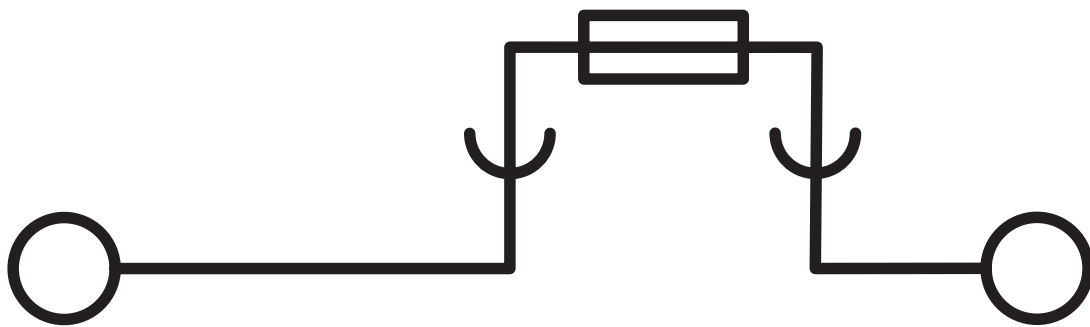


3075773

<https://www.phoenixcontact.com/in/products/3075773>

Drawings

Circuit diagram




TB 4-HESI (5X20) EI - Fuse modular terminal block



3075773

<https://www.phoenixcontact.com/in/products/3075773>

Approvals

 cULus Recognized Approval ID: E60425		Nominal Voltage U_N	Nominal Current I_N	Cross Section AWG	Cross Section mm^2
		600 V	6.3 A	20 - 10	-
		600 V	6.3 A	20 - 10	-

TB 4-HESI (5X20) EI - Fuse modular terminal block



3075773

<https://www.phoenixcontact.com/in/products/3075773>

Classifications

ECLASS

ECLASS-11.0	27141116
ECLASS-12.0	27141116
ECLASS-13.0	27250113

ETIM

ETIM 7.0	EC000899
----------	----------

UNSPSC

UNSPSC 21.0	39121410
-------------	----------

TB 4-HESI (5X20) EI - Fuse modular terminal block



3075773

<https://www.phoenixcontact.com/in/products/3075773>

Environmental Product Compliance

China RoHS	Environmentally friendly use period: unlimited = EFUP-e
	No hazardous substances above threshold values

TB 4-HESI (5X20) EI - Fuse modular terminal block



3075773

<https://www.phoenixcontact.com/in/products/3075773>

Accessories

INBS 10-8 - Insertion bridge

3247159

<https://www.phoenixcontact.com/in/products/3247159>



Insertion bridge, Bridging in the terminal point, number of positions: 10, color: dark gray

SZS 0,6X3,5 VDE - Screwdriver

1212602

<https://www.phoenixcontact.com/in/products/1212602>



Screwdriver, slot-headed, VDE insulated, size: 0.6 x 3.5 x 100 mm, 2-component grip, with non-slip grip

TB 4-HESI (5X20) EI - Fuse modular terminal block



3075773

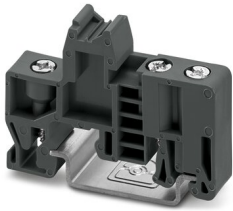
<https://www.phoenixcontact.com/in/products/3075773>

E/TB - End clamp

3246966

<https://www.phoenixcontact.com/in/products/3246966>

End clamp, for assembly on NS 32 or NS 35/7.5 DIN rail



NS 32 PERF 2000MM-VPE 10 - DIN rail perforated

1201002

<https://www.phoenixcontact.com/in/products/1201002>



DIN rail perforated, acc. to EN 60715, material: Steel, galvanized, passivated with a thick layer, G profile, color: silver, Pack of 10 (20 m)

TB 4-HESI (5X20) EI - Fuse modular terminal block

3075773

<https://www.phoenixcontact.com/in/products/3075773>



NS 32 UNPERF 2000MM-VPE 10 - DIN rail, unperforated

1201015

<https://www.phoenixcontact.com/in/products/1201015>



DIN rail, unperforated, acc. to EN 60715, material: Steel, galvanized, passivated with a thick layer, G profile, color: silver, Pack of 10 (20 m)

Phoenix Contact 2023 © - all rights reserved

<https://www.phoenixcontact.com>

PHOENIX CONTACT (I) Pvt. Ltd.

A-58/2, Okhla Industrial Area, Phase - II, New Delhi-110 020

+91.1275.71420

info@phoenixcontact.co.in