

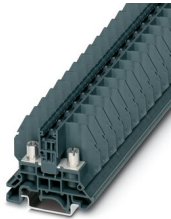
# RBO 5 SP/SP E - Bolt connection terminal block



3000896

<https://www.phoenixcontact.com/in/products/3000896>

Please be informed that the data shown in this PDF document is generated from our Online Catalog. Please find the complete data in the user documentation. Our General Terms of Use for Downloads are valid.



Bolt connection terminal block, with reduced-size connection screw, nom. voltage: 800 V, nominal current: 57 A, number of connections: 2, connection method: Bolt connection, 1 level, Rated cross section: 10 mm<sup>2</sup>, mounting type: NS 35/7,5, NS 35/15, NS 32, color: gray

## Commercial Data

Item number	3000896
Packing unit	50 pc
Minimum order quantity	50 pc
Sales Key	BE4
Product Key	BE4412
GTIN	4046356856812
Weight per Piece (including packing)	99.99 g
Weight per Piece (excluding packing)	99.99 g
Country of origin	IN

# RBO 5 SP/SP E - Bolt connection terminal block



3000896

<https://www.phoenixcontact.com/in/products/3000896>

## Technical Data

### Product properties

Product type	Bolt connection terminal block
Pitch	13 mm
Number of connections	2
Number of rows	1
Potentials	1

### Insulation characteristics

Overvoltage category	III
Degree of pollution	3

### Electrical properties

Rated surge voltage	8 kV
---------------------	------

### Connection data

Number of connections per level	2
---------------------------------	---

#### 1 level

Screw thread	M5
Stripping length	The stripping length depends on the specification provided by the cable lug manufacturer.
Connection in acc. with standard	IEC 60947-7-1
Nominal current	57 A
Maximum load current	57 A (with 10 mm <sup>2</sup> conductor cross section)
Nominal voltage	800 V
Note	Checked at 1100 V
Nominal cross section	10 mm <sup>2</sup>

#### Cable lug connection DIN 46234:1980-03

Connection in acc. with standard	DIN 46234:1980-03
Cross section	0.1 mm <sup>2</sup> ... 10 mm <sup>2</sup>
Cross section range AWG	26 ... 8 (converted acc. to IEC)
Hole diameter	5.3 mm
Width	10 mm
Bolt diameter	5 mm
Tightening torque	2 ... 2.2 Nm
Connection in acc. with standard	DIN 46237:1970-07
Cross section	0.5 mm <sup>2</sup> ... 6 mm <sup>2</sup>
Cross section range AWG	20 ... 10 (converted acc. to IEC)
Hole diameter	5.3 mm
Width	10 mm
Bolt diameter	5 mm
Tightening torque	2 ... 2.2 Nm

# RBO 5 SP/SP E - Bolt connection terminal block



3000896

<https://www.phoenixcontact.com/in/products/3000896>

## Dimensions

Width	13 mm
End cover width	2.2 mm
Height NS 35/15	54.6 mm
Height NS 35/7,5	47.1 mm
Length	53.3 mm
Pitch	13 mm

## Material specifications

Color	gray
Flammability rating according to UL 94	V2
Insulating material group	I
Insulating material	PA
Temperature index of insulation material (DIN EN 60216-1 (VDE 0304-21))	125 °C
Relative insulation material temperature index (Elec., UL 746 B)	125 °C

## Electrical tests

### Surge voltage test

Test voltage setpoint	9.8 kV
Result	Test passed

### Temperature-rise test

Requirement temperature-rise test	Increase in temperature $\leq$ 45 K
Result	Test passed
Short-time withstand current 10 mm <sup>2</sup>	1.2 kA
Result	Test passed

### Power-frequency withstand voltage

Test voltage setpoint	2 kV
Result	Test passed

## Mechanical properties

### Mechanical data

Open side panel	Yes
-----------------	-----

## Mechanical tests

### Mechanical strength

Result	Test passed
--------	-------------

### Attachment on the carrier

DIN rail/fixing support	NS 32/NS 35
Test force setpoint	5 N
Result	Test passed

## Environmental and real-life conditions

### Needle-flame test

Time of exposure	30 s
Result	Test passed

### Oscillation/broadband noise

Specification	DIN EN 50155 (VDE 0115-200):2018-05
Spectrum	Service life test category 1, class B, body mounted
Frequency	$f_1 = 5 \text{ Hz}$ to $f_2 = 150 \text{ Hz}$
ASD level	$1.857 \text{ (m/s}^2\text{)}/\text{Hz}$
Acceleration	0.8g
Test duration per axis	5 h
Test directions	X-, Y- and Z-axis
Result	Test passed

### Shocks

Specification	DIN EN 50155 (VDE 0115-200):2018-05
Pulse shape	Half-sine
Acceleration	5g
Shock duration	30 ms
Number of shocks per direction	3
Test directions	X-, Y- and Z-axis (pos. and neg.)
Result	Test passed

### Ambient conditions

Ambient temperature (operation)	-60 °C ... 105 °C (max. short-term operating temperature RTI Elec.)
Ambient temperature (storage/transport)	-25 °C ... 60 °C (for a short time, not exceeding 24 h, -60 °C to +70 °C)
Ambient temperature (assembly)	-5 °C ... 70 °C
Ambient temperature (actuation)	-5 °C ... 70 °C
Permissible humidity (storage/transport)	30 % ... 70 %

## Standards and regulations

Connection in acc. with standard	IEC 60947-7-1
----------------------------------	---------------

## Mounting

Mounting type	NS 35/7,5
	NS 35/15
	NS 32

# RBO 5 SP/SP E - Bolt connection terminal block



3000896

<https://www.phoenixcontact.com/in/products/3000896>

## Drawings

### Circuit diagram




# RBO 5 SP/SP E - Bolt connection terminal block




3000896

<https://www.phoenixcontact.com/in/products/3000896>

## Approvals

 <b>cUL Recognized</b> Approval ID: FILE E 60425				
	Nominal Voltage $U_N$	Nominal Current $I_N$	Cross Section AWG	Cross Section $\text{mm}^2$
	600 V	45 A	-	-
	600 V	45 A	-	-

 <b>UL Recognized</b> Approval ID: FILE E 60425				
	Nominal Voltage $U_N$	Nominal Current $I_N$	Cross Section AWG	Cross Section $\text{mm}^2$
	600 V	45 A	-	-
	600 V	45 A	-	-

# RBO 5 SP/SP E - Bolt connection terminal block



3000896

<https://www.phoenixcontact.com/in/products/3000896>

## Classifications

### ECLASS

ECLASS-11.0

27141120

### ETIM

ETIM 7.0

EC000897

# RBO 5 SP/SP E - Bolt connection terminal block



3000896

<https://www.phoenixcontact.com/in/products/3000896>

## Environmental Product Compliance

China RoHS	Environmentally friendly use period: unlimited = EFUP-e
	No hazardous substances above threshold values



# RBO 5 SP/SP E - Bolt connection terminal block

3000896

<https://www.phoenixcontact.com/in/products/3000896>

## Accessories

 Note: Applying some accessories below might limit this product.

### FB 10-13 - Fixed bridge

3059126

<https://www.phoenixcontact.com/in/products/3059126>



Fixed bridge, pitch: 13 mm, number of positions: 10, color: silver

 Max. current carrying capacity: 41 A

---

### FB 10-13 ISO - Fixed bridge

3059663

<https://www.phoenixcontact.com/in/products/3059663>



Fixed bridge, pitch: 13 mm, number of positions: 10, color: silver

 Max. current carrying capacity: 41 A

# RBO 5 SP/SP E - Bolt connection terminal block



3000896

<https://www.phoenixcontact.com/in/products/3000896>

## TS-KK 3 - Separating plate

2770215

<https://www.phoenixcontact.com/in/products/2770215>



Separating plate, length: 14 mm, width: 0.5 mm, height: 16 mm, color: gray

---

## SHN 8 - Tool

1209868

<https://www.phoenixcontact.com/in/products/1209868>



Socket wrench, wrench size 8 mm

# RBO 5 SP/SP E - Bolt connection terminal block



3000896

<https://www.phoenixcontact.com/in/products/3000896>

## AP RSC - Cover profile

3058017

<https://www.phoenixcontact.com/in/products/3058017>



Cover profile, for covering terminal strips, directly snapped onto RBO... and RSC... terminal blocks. Length supplied: 1 m

---

## D-RSC 5 E - End cover

3059618

<https://www.phoenixcontact.com/in/products/3059618>

End cover, length: 53.3 mm, width: 2.2 mm, height: 37 mm, color: dark gray



# RBO 5 SP/SP E - Bolt connection terminal block



3000896

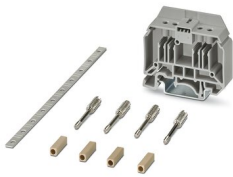
<https://www.phoenixcontact.com/in/products/3000896>

## CARRIER 35-13 KIT - Short circuit kit for current transformers

3215067

<https://www.phoenixcontact.com/in/products/3215067>

Short-circuit kit for current transformer. Use with DIN rail mounted RBO/RSC 5 feed-through terminals



---

## NS 35/ 7,5 PERF 2000MM - DIN rail perforated

0801733

<https://www.phoenixcontact.com/in/products/0801733>

DIN rail perforated, acc. to EN 60715, material: Steel, galvanized, passivated with a thick layer, Standard profile, color: silver, Pack of 25 (50 m)



# RBO 5 SP/SP E - Bolt connection terminal block



3000896

<https://www.phoenixcontact.com/in/products/3000896>

## NS 35/ 7,5 UNPERF 2000MM - DIN rail, unperforated

0801681

<https://www.phoenixcontact.com/in/products/0801681>



DIN rail, unperforated, acc. to EN 60715, material: Steel, galvanized, passivated with a thick layer, Standard profile, color: silver, Pack of 25 (50 m)

---

## NS 35/ 7,5 WH PERF 2000MM - DIN rail perforated

1204119

<https://www.phoenixcontact.com/in/products/1204119>



DIN rail perforated, acc. to EN 60715, material: Steel, Galvanized, white passivated, Standard profile, color: silver, Pack of 25 (50 m)

# RBO 5 SP/SP E - Bolt connection terminal block

3000896

<https://www.phoenixcontact.com/in/products/3000896>



## NS 35/ 7,5 WH UNPERF 2000MM-VPE 10 - DIN rail, unperforated

1204122

<https://www.phoenixcontact.com/in/products/1204122>



DIN rail, unperforated, acc. to EN 60715, material: Steel, Galvanized, white passivated, Standard profile, color: silver, Pack of 10 (20 m)

---

## NS 35/ 7,5 AL UNPERF 2000MM - DIN rail, unperforated

0801704

<https://www.phoenixcontact.com/in/products/0801704>



DIN rail, unperforated, acc. to EN 60715, material: Aluminum, uncoated, Standard profile, color: silver, Pack of 25 (50 m)

# RBO 5 SP/SP E - Bolt connection terminal block



3000896

<https://www.phoenixcontact.com/in/products/3000896>

## NS 35/ 7,5 ZN PERF 2000MM - DIN rail perforated

1206421

<https://www.phoenixcontact.com/in/products/1206421>



DIN rail perforated, acc. to EN 60715, material: Steel, galvanized, Standard profile, color: silver, Pack of 25 (50 m)

---

## NS 35/ 7,5 ZN UNPERF 2000MM - DIN rail, unperforated

1206434

<https://www.phoenixcontact.com/in/products/1206434>



DIN rail, unperforated, acc. to EN 60715, material: Steel, galvanized, Standard profile, color: silver, Pack of 25 (50 m)

# RBO 5 SP/SP E - Bolt connection terminal block

3000896

<https://www.phoenixcontact.com/in/products/3000896>



## NS 35/ 7,5 CU UNPERF 2000MM-VPE 10 - DIN rail, unperforated

0801762

<https://www.phoenixcontact.com/in/products/0801762>



DIN rail, unperforated, acc. to EN 60715, material: Copper, uncoated, Standard profile, color: copper-colored, Pack of 10 (20 m)

---

## NS 35/ 7,5 CAP - End cap

1206560

<https://www.phoenixcontact.com/in/products/1206560>

DIN rail end piece, for DIN rail NS 35/7.5





# RBO 5 SP/SP E - Bolt connection terminal block



3000896

<https://www.phoenixcontact.com/in/products/3000896>

## NS 35/15 PERF 2000MM - DIN rail perforated

1201730

<https://www.phoenixcontact.com/in/products/1201730>



DIN rail perforated, similar to EN 60715, material: Steel, galvanized, passivated with a thick layer, Standard profile, color: silver, Pack of 25 (50 m)

---

## NS 35/15 UNPERF 2000MM - DIN rail, unperforated

1201714

<https://www.phoenixcontact.com/in/products/1201714>



DIN rail, unperforated, similar to EN 60715, material: Steel, galvanized, passivated with a thick layer, Standard profile, color: silver, Pack of 25 (50 m)

# RBO 5 SP/SP E - Bolt connection terminal block



3000896

<https://www.phoenixcontact.com/in/products/3000896>

## NS 35/15 WH PERF 2000MM - DIN rail perforated

0806602

<https://www.phoenixcontact.com/in/products/0806602>



DIN rail perforated, similar to EN 60715, material: Steel, Galvanized, white passivated, Standard profile, color: white, Pack of 25 (50 m)

---

## NS 35/15 WH UNPERF 2000MM-VPE 10 - DIN rail, unperforated

1204135

<https://www.phoenixcontact.com/in/products/1204135>



DIN rail, unperforated, similar to EN 60715, material: Steel, Galvanized, white passivated, Standard profile, color: silver, Pack of 10 (20 m)

# RBO 5 SP/SP E - Bolt connection terminal block



3000896

<https://www.phoenixcontact.com/in/products/3000896>

## NS 35/15 AL UNPERF 2000MM - DIN rail, unperforated

1201756

<https://www.phoenixcontact.com/in/products/1201756>



DIN rail, unperforated, similar to EN 60715, material: Aluminum, uncoated, Standard profile, color: silver

---

## NS 35/15 ZN PERF 2000MM - DIN rail perforated

1206599

<https://www.phoenixcontact.com/in/products/1206599>



DIN rail perforated, similar to EN 60715, material: Steel, galvanized, Standard profile, color: silver, Pack of 25 (50 m)

# RBO 5 SP/SP E - Bolt connection terminal block



3000896

<https://www.phoenixcontact.com/in/products/3000896>

## NS 35/15 ZN UNPERF 2000MM - DIN rail, unperforated

1206586

<https://www.phoenixcontact.com/in/products/1206586>



DIN rail, unperforated, similar to EN 60715, material: Steel, galvanized, Standard profile, color: silver, Pack of 25 (50 m)

---

## NS 35/15 CU UNPERF 2000MM-VPE 10 - DIN rail, unperforated

1201895

<https://www.phoenixcontact.com/in/products/1201895>



DIN rail, unperforated, similar to EN 60715, material: Copper, uncoated, Standard profile, color: copper-colored, Pack of 10 (20 m)

# RBO 5 SP/SP E - Bolt connection terminal block

3000896

<https://www.phoenixcontact.com/in/products/3000896>



## NS 35/15 CAP - End cap

1206573

<https://www.phoenixcontact.com/in/products/1206573>

DIN rail end piece, for DIN rail NS 35/15



---

## NS 35/15-2,3 UNPERF 2000MM-VPE 10 - DIN rail, unperforated

1201798

<https://www.phoenixcontact.com/in/products/1201798>

DIN rail, unperforated, acc. to EN 60715, material: Steel, galvanized, passivated with a thick layer, Standard profile 2.3 mm, color: silver, Pack of 10 (20 m)



# RBO 5 SP/SP E - Bolt connection terminal block



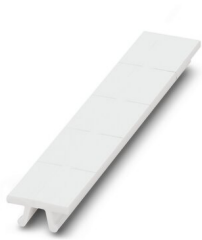
3000896

<https://www.phoenixcontact.com/in/products/3000896>

## ZB 13:UNBEDRUCKT - Zack marker strip

0829131

<https://www.phoenixcontact.com/in/products/0829131>



Zack marker strip, Strip, white, unlabeled, can be labeled with: PLOTMARK, CMS-P1-PLOTTER, mounting type: snapped, for terminal block width: 13 mm, lettering field size: 13 x 10.5 mm, Number of individual labels: 5

---

## ZB 13 CUS - Zack marker strip

0829132

<https://www.phoenixcontact.com/in/products/0829132>



Zack marker strip, can be ordered: Strip, white, labeled according to customer specifications, mounting type: snap into tall marker groove, for terminal block width: 13 mm, lettering field size: 13 x 10.5 mm, Number of individual labels: 5

# RBO 5 SP/SP E - Bolt connection terminal block

3000896

<https://www.phoenixcontact.com/in/products/3000896>

## ZBF 13:UNBEDRUCKT - Zack Marker strip, flat

0829133

<https://www.phoenixcontact.com/in/products/0829133>



Zack Marker strip, flat, Strip, white, unlabeled, can be labeled with: PLOTMARK, CMS-P1-PLOTTER, mounting type: snapped, for terminal block width: 13 mm, lettering field size: 13 x 5.2 mm, Number of individual labels: 5

---

## ZBF 13 CUS - Zack Marker strip, flat

0829134

<https://www.phoenixcontact.com/in/products/0829134>



Zack Marker strip, flat, can be ordered: Strip, white, labeled according to customer specifications, mounting type: snap into flat marker groove, for terminal block width: 13 mm, lettering field size: 13 x 5.2 mm, Number of individual labels: 5

# RBO 5 SP/SP E - Bolt connection terminal block



3000896

<https://www.phoenixcontact.com/in/products/3000896>

## CLIPFIX 35 - End clamp

3022218

<https://www.phoenixcontact.com/in/products/3022218>



Quick mounting end clamp for NS 35/7,5 DIN rail or NS 35/15 DIN rail, with marking option, width: 9.5 mm, color: gray

---

## CLIPFIX 35-5 - End clamp

3022276

<https://www.phoenixcontact.com/in/products/3022276>



Quick mounting end clamp for NS 35/7,5 DIN rail or NS 35/15 DIN rail, with marking option, with parking option for FBS...5, FBS...6, KSS 5, KSS 6, width: 5.15 mm, color: gray



# RBO 5 SP/SP E - Bolt connection terminal block



3000896

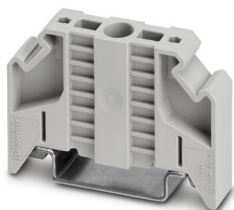
<https://www.phoenixcontact.com/in/products/3000896>

## E/NS 35 N - End clamp

0800886

<https://www.phoenixcontact.com/in/products/0800886>

End clamp, width: 9.5 mm, color: gray



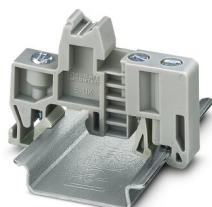
---

## E/UK - End clamp

1201442

<https://www.phoenixcontact.com/in/products/1201442>

End clamp, material: PA, color: gray, Mounting on a DIN rail NS 32 or NS 35



# RBO 5 SP/SP E - Bolt connection terminal block



3000896

<https://www.phoenixcontact.com/in/products/3000896>

## E/UK 1 - End clamp

1201413

<https://www.phoenixcontact.com/in/products/1201413>



End clamps, for supporting the ends of double-level and three-level terminal blocks, width: 10 mm, color: gray

---

Phoenix Contact 2023 © - all rights reserved

<https://www.phoenixcontact.com>

PHOENIX CONTACT (I) Pvt. Ltd.

A-58/2, Okhla Industrial Area, Phase - II, New Delhi-110 020

+91.1275.71420

[info@phoenixcontact.co.in](mailto:info@phoenixcontact.co.in)