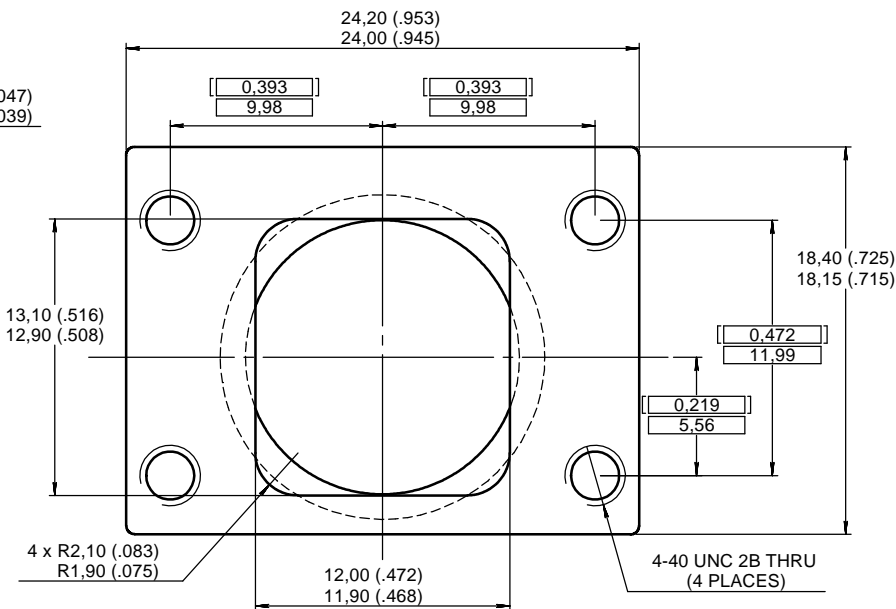
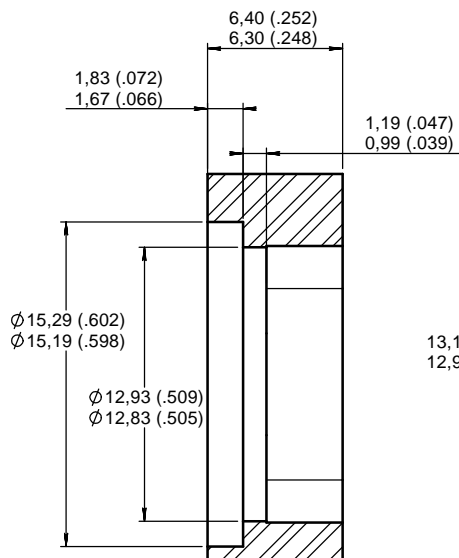
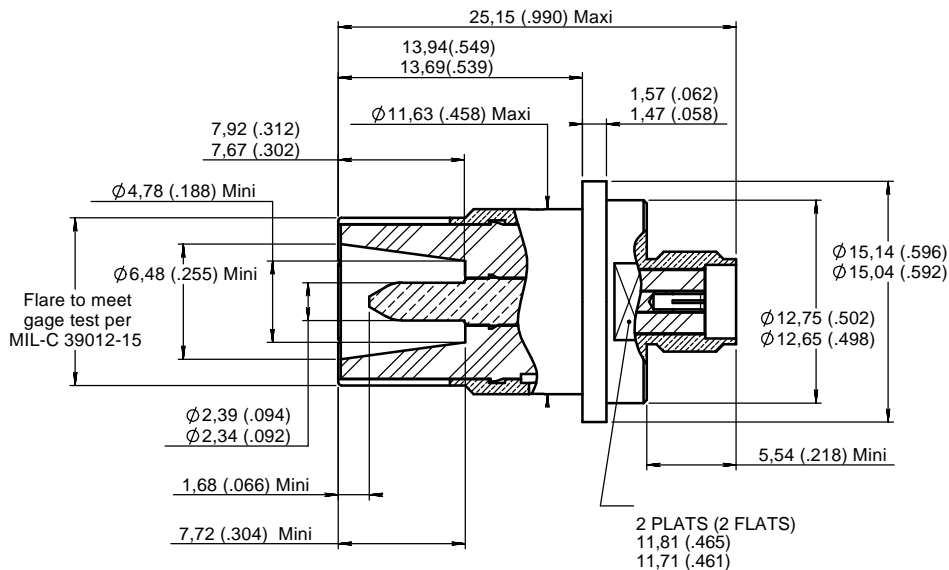
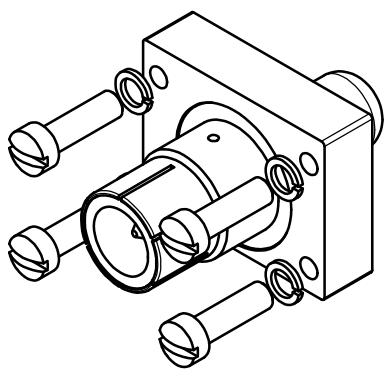


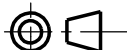
**Series**  
**NSX**
**SIZE 1 PIN COAXIAL SMA TERMINATION**  
**HONEYWELL P/N : 4067930-1/**
**Issue:**  
**Dec. 14, 2009**
**Page**  
**1/1**

**MATERIAL :**

- OUTER AND CENTER CONTACTS : BERYLLIUM COPPER PER ASTM-B-196
- DIELECTRIC : PTFE PER ASTM-D-1710 OR EQUIVALENT
- RETAINING PLATE : ALUMINIUM ALLOY
- SCREWS AND WASHER: STAINLESS STEEL PER SAE-AMS 5688

**FINISH :**

- OUTER AND CENTER CONTACTS : PLATING .00005 INCH OF GOLD PER MIL-G-45204 TYPE I OR II GRADE C OR D CLASS 1 OVER NICKEL QQ-N-290
- RETAINING PLATE : TIN LEAD 95/5 OVER NICKEL UNDERPLATE

SUPPLIED WITH 1 RETAINING PLATE AND 4 SCREWS

**DIMENSIONS : mm (inch) -**


This information is given as an indication. In the continual goal to improve our products, we reserve the right to make any modifications judged necessary.

4112\_9311

CREATION				
PEN: /	Dec 14, 09	Updated cotation	MACARI	LEGENBRE
	Dec 03, 09	Flare to meet gage tes per MIL-C 39012/15 was Ø 10,82 (.426) max	MACARI	LEGENBRE
NOM: FALETTI	MAY 20, 05	REDRAWN AND ADDED 3D	LEGENBRE	MACARI
DATE: MARCH 25, 05	NOV 18, 96	REDRAWN	VALGRESY	BALDYROU
APPR.: /	Issue	Revisions	Name	Approved

620044EN

RADIAL PROPRIETARY INFORMATION