

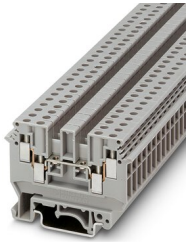
# UDK 4 - Feed-through terminal block



2775016

<https://www.phoenixcontact.com/in/products/2775016>

Please be informed that the data shown in this PDF document is generated from our Online Catalog. Please find the complete data in the user documentation. Our General Terms of Use for Downloads are valid.



Feed-through terminal block, nom. voltage: 630 V, nominal current: 32 A, number of connections: 4, number of positions: 1, connection method: Screw connection, 1 level, Rated cross section: 4 mm<sup>2</sup>, cross section: 0.2 mm<sup>2</sup> - 6 mm<sup>2</sup>, mounting type: NS 35/7,5, NS 35/15, NS 32, color: gray

## Your advantages

- Two connection points on each side to accommodate several conductors
- Double bridge shaft enables individual potential distribution and supply

## Commercial Data

Item number	2775016
Packing unit	50 pc
Minimum order quantity	1 pc
Sales Key	BE1
Product Key	BE1213
Catalog Page	Page 471 (C-1-2019)
GTIN	4017918068363
Weight per Piece (including packing)	15.256 g
Weight per Piece (excluding packing)	15.256 g
Customs tariff number	85369010
Country of origin	IN

# UDK 4 - Feed-through terminal block



2775016

<https://www.phoenixcontact.com/in/products/2775016>

## Technical Data

### Product properties

Product type	Multi-conductor terminal block
Number of positions	1
Number of connections	4
Number of rows	1
Potentials	1

### Insulation characteristics

Overvoltage category	III
Degree of pollution	3

### Electrical properties

Rated surge voltage	8 kV
Maximum power dissipation for nominal condition	1.02 W

### Connection data

Number of connections per level	4
Nominal cross section	4 mm <sup>2</sup>

### 1 level

Screw thread	M3
Tightening torque	0.5 ... 0.6 Nm
Stripping length	8 mm
Internal cylindrical gage	A3
Connection in acc. with standard	IEC 60947-7-1
Conductor cross section rigid	0.2 mm <sup>2</sup> ... 6 mm <sup>2</sup>
Cross section AWG	24 ... 10 (converted acc. to IEC)
Conductor cross section flexible	0.2 mm <sup>2</sup> ... 4 mm <sup>2</sup>
Conductor cross section, flexible [AWG]	24 ... 12 (converted acc. to IEC)
Conductor cross-section flexible (ferrule without plastic sleeve)	0.25 mm <sup>2</sup> ... 4 mm <sup>2</sup>
Flexible conductor cross section (ferrule with plastic sleeve)	0.25 mm <sup>2</sup> ... 1.5 mm <sup>2</sup>
Cross-section with insertion bridge, rigid	2.5 mm <sup>2</sup>
Cross-section with insertion bridge, flexible	2.5 mm <sup>2</sup>
2 conductors with same cross section, solid	0.2 mm <sup>2</sup> ... 1 mm <sup>2</sup>
2 conductors with same cross section, flexible	0.2 mm <sup>2</sup> ... 1.5 mm <sup>2</sup>
2 conductors with same cross section, flexible, with ferrule without plastic sleeve	0.25 mm <sup>2</sup> ... 1.5 mm <sup>2</sup>
2 conductors with the same cross section, flexible, with TWIN ferrule with plastic sleeve	0.5 mm <sup>2</sup> ... 1 mm <sup>2</sup>
Nominal current	32 A (with 6 mm <sup>2</sup> conductor cross section)
Maximum load current	32 A (In the case of a 6 mm <sup>2</sup> conductor cross section, the maximum load current must not be exceeded by the total current of all connected conductors)

# UDK 4 - Feed-through terminal block



2775016

<https://www.phoenixcontact.com/in/products/2775016>

Nominal voltage	630 V
Nominal cross section	4 mm <sup>2</sup>

## Dimensions

Width	6.2 mm
End cover width	1.5 mm
Height NS 35/15	54.5 mm
Height NS 35/7,5	47 mm
Height	1.85 "
Height NS 32	52 mm
Length	63.5 mm

## Material specifications

Color	gray
Flammability rating according to UL 94	V2
Insulating material group	I
Insulating material	PA
Temperature index of insulation material (DIN EN 60216-1 (VDE 0304-21))	125 °C
Relative insulation material temperature index (Elec., UL 746 B)	125 °C

## Electrical tests

### Surge voltage test

Test voltage setpoint	9.8 kV
Result	Test passed

### Temperature-rise test

Requirement temperature-rise test	Increase in temperature ≤ 45 K
Result	Test passed
Short-time withstand current 4 mm <sup>2</sup>	0.48 kA
Short-time withstand current 6 mm <sup>2</sup>	0.72 kA
Result	Test passed

### Power-frequency withstand voltage

Test voltage setpoint	1.89 kV
Result	Test passed

## Mechanical properties

### Mechanical data

Open side panel	Yes
-----------------	-----

## Mechanical tests

### Mechanical strength

Result	Test passed
--------	-------------

# UDK 4 - Feed-through terminal block



2775016

<https://www.phoenixcontact.com/in/products/2775016>

## Attachment on the carrier

DIN rail/fixing support	NS 32/NS 35
Test force setpoint	1 N
Result	Test passed

## Test for conductor damage and slackening

Rotation speed	10 rpm
Revolutions	135
Conductor cross section/weight	0.2 mm <sup>2</sup> / 0.2 kg
	4 mm <sup>2</sup> / 0.9 kg
	6 mm <sup>2</sup> / 1.4 kg
Result	Test passed

## Environmental and real-life conditions

### Needle-flame test

Time of exposure	30 s
Result	Test passed

### Ambient conditions

Ambient temperature (operation)	-60 °C ... 105 °C (max. short-term operating temperature RTI Elec.)
Ambient temperature (storage/transport)	-25 °C ... 60 °C (for a short time, not exceeding 24 h, -60 °C to +70 °C)
Ambient temperature (assembly)	-5 °C ... 70 °C
Ambient temperature (actuation)	-5 °C ... 70 °C
Permissible humidity (storage/transport)	30 % ... 70 %

## Standards and regulations

Connection in acc. with standard	IEC 60947-7-1
----------------------------------	---------------

## Mounting

Mounting type	NS 35/7,5
	NS 35/15
	NS 32

# UDK 4 - Feed-through terminal block

2775016

<https://www.phoenixcontact.com/in/products/2775016>

## Drawings

Circuit diagram




# UDK 4 - Feed-through terminal block





2775016

<https://www.phoenixcontact.com/in/products/2775016>


## Approvals

 <b>CSA</b> Approval ID: 13631				
	Nominal Voltage $U_N$	Nominal Current $I_N$	Cross Section AWG	Cross Section $\text{mm}^2$
	300 V	25 A	22 - 10	-
	300 V	25 A	22 - 10	-
	600 V	5 A	22 - 10	-

 <b>EAC</b> Approval ID: RU C-DE.AI30.B.01102				
---	--	--	--	--

 <b>cULus Recognized</b> Approval ID: E60425				
	Nominal Voltage $U_N$	Nominal Current $I_N$	Cross Section AWG	Cross Section $\text{mm}^2$
	300 V	30 A	30 - 10	-
	300 V	35 A	30 - 10	-
	300 V	30 A	30 - 10	-
	300 V	35 A	30 - 10	-
	600 V	5 A	30 - 10	-

 <b>RS</b> Approval ID: 22.44.01.00083.250				
--	--	--	--	--

 <b>EAC</b> Approval ID: RU C-DE.BL08.B.00534				
---	--	--	--	--

# UDK 4 - Feed-through terminal block



2775016

<https://www.phoenixcontact.com/in/products/2775016>

## Classifications

### ECLASS

ECLASS-11.0

27141120

### ETIM

ETIM 8.0

EC000897

### UNSPSC

UNSPSC 21.0

39121400

# UDK 4 - Feed-through terminal block



2775016

<https://www.phoenixcontact.com/in/products/2775016>

## Environmental Product Compliance

China RoHS	Environmentally friendly use period: unlimited = EFUP-e
	No hazardous substances above threshold values



# UDK 4 - Feed-through terminal block

2775016

<https://www.phoenixcontact.com/in/products/2775016>



## Accessories

**i** Note: Applying some accessories below might limit this product.

### IS-K 4 - Bridge bar isolator

1302338

<https://www.phoenixcontact.com/in/products/1302338>



Bridge bar isolator, color: gray

### ISSBI 10- 6 - Bridge

0301505

<https://www.phoenixcontact.com/in/products/0301505>



Bridge, pitch: 6 mm, number of positions: 10, color: silver

**i** Max. current carrying capacity: 34 A

# UDK 4 - Feed-through terminal block

2775016

<https://www.phoenixcontact.com/in/products/2775016>



## LB 10-6 BU - Bridge

0202280

<https://www.phoenixcontact.com/in/products/0202280>



Bridge, pitch: 6 mm, number of positions: 10, color: blue

---

## LB 10-6 RD - Bridge

0202293

<https://www.phoenixcontact.com/in/products/0202293>



Bridge, pitch: 6 mm, number of positions: 10, color: red

# UDK 4 - Feed-through terminal block

2775016

<https://www.phoenixcontact.com/in/products/2775016>



## LB 10-6 GY - Bridge

0202358

<https://www.phoenixcontact.com/in/products/0202358>



Bridge, pitch: 6 mm, number of positions: 10, color: gray

---

## LB 100-6 GY - Bridge

0202345

<https://www.phoenixcontact.com/in/products/0202345>



Bridge, pitch: 6 mm, number of positions: 100, color: gray

# UDK 4 - Feed-through terminal block

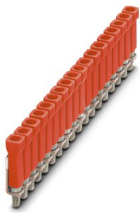
2775016

<https://www.phoenixcontact.com/in/products/2775016>

## LB 100-6 RD - Bridge

0202316

<https://www.phoenixcontact.com/in/products/0202316>



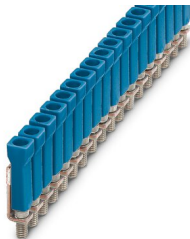
Bridge, number of positions: 100, color: red

---

## LB 100-6 BU - Bridge

0202303

<https://www.phoenixcontact.com/in/products/0202303>



Bridge, number of positions: 100, color: blue

# UDK 4 - Feed-through terminal block

2775016

<https://www.phoenixcontact.com/in/products/2775016>



## FBI 100- 6 - Fixed bridge

0201650

<https://www.phoenixcontact.com/in/products/0201650>



Fixed bridge, pitch: 6.2 mm, number of positions: 100, color: silver

---

## FBI 10- 6 - Fixed bridge

0203250

<https://www.phoenixcontact.com/in/products/0203250>



Fixed bridge, pitch: 6.2 mm, number of positions: 10, color: silver

 Max. current carrying capacity: 34 A

# UDK 4 - Feed-through terminal block

2775016

<https://www.phoenixcontact.com/in/products/2775016>



## FBI 20- 6 - Fixed bridge

0201867

<https://www.phoenixcontact.com/in/products/0201867>



Fixed bridge, pitch: 6.2 mm, number of positions: 20, color: silver

---

## EB 3- 6 - Insertion bridge

0201142

<https://www.phoenixcontact.com/in/products/0201142>



Insertion bridge, pitch: 6.2 mm, number of positions: 3, color: gray

 Max. current carrying capacity: 26 A

# UDK 4 - Feed-through terminal block

2775016

<https://www.phoenixcontact.com/in/products/2775016>




## EB 2- 6 - Insertion bridge

0201155

<https://www.phoenixcontact.com/in/products/0201155>

Insertion bridge, pitch: 6.2 mm, number of positions: 2, color: gray



 Max. current carrying capacity: 26 A

---


## EB 10- 6 - Insertion bridge

0201139

<https://www.phoenixcontact.com/in/products/0201139>

Insertion bridge, pitch: 6.2 mm, number of positions: 10, color: gray



 Max. current carrying capacity: 26 A

# UDK 4 - Feed-through terminal block

2775016

<https://www.phoenixcontact.com/in/products/2775016>



## SBRN 2-7 - Switching jumper

1413230

<https://www.phoenixcontact.com/in/products/1413230>



Switching jumper, pitch: 7 mm, number of positions: 2, color: silver

---

## USBR 2-7 - Switching jumper

2303239

<https://www.phoenixcontact.com/in/products/2303239>



Switching jumper, pitch: 7 mm, number of positions: 2, color: silver

 Max. current carrying capacity: 24 A



# UDK 4 - Feed-through terminal block

2775016

<https://www.phoenixcontact.com/in/products/2775016>



## USBRJ 2-7 - Switching jumper

2305538

<https://www.phoenixcontact.com/in/products/2305538>

Switching jumper, number of positions: 2, color: silver



---

## D-UDK 4 - End cover

2775113

<https://www.phoenixcontact.com/in/products/2775113>

End cover, length: 63.5 mm, width: 1.5 mm, height: 35.9 mm, color: gray



# UDK 4 - Feed-through terminal block

2775016

<https://www.phoenixcontact.com/in/products/2775016>

## WS 3- 6 - Warning label

1004115

<https://www.phoenixcontact.com/in/products/1004115>

Warning plate, with 2 plastic screws, across 3 terminal blocks, pitch 6 mm



---

## WS 5- 6 - Warning label

1004403

<https://www.phoenixcontact.com/in/products/1004403>

Warning plate, with 2 plastic screws, across 5 terminal blocks, pitch 6 mm



# UDK 4 - Feed-through terminal block

2775016

<https://www.phoenixcontact.com/in/products/2775016>



## WS 4- 6 - Warning label

1004209

<https://www.phoenixcontact.com/in/products/1004209>

Warning plate, with 2 plastic screws, across 4 terminal blocks, pitch 6 mm



---

## FB-150

## METER - Fixed bridge

0201595

<https://www.phoenixcontact.com/in/products/0201595>



Cross connection rail, for fixed bridging of identical inputs and outputs, made of Cu, nickel-plated, 1 m long

# UDK 4 - Feed-through terminal block

2775016

<https://www.phoenixcontact.com/in/products/2775016>



## KSS 3- 6 - Short-circuit connector

0309523

<https://www.phoenixcontact.com/in/products/0309523>



Short-circuit connector, pitch: 6 mm, number of positions: 3, color: black

---

## KSS 6 - Short-circuit connector

0301547

<https://www.phoenixcontact.com/in/products/0301547>



Short-circuit connector, pitch: 6 mm, number of positions: 2, color: black

# UDK 4 - Feed-through terminal block

2775016

<https://www.phoenixcontact.com/in/products/2775016>



## RPS - Reducing plug

0201647

<https://www.phoenixcontact.com/in/products/0201647>



Reducing plug, number of positions: 1, fuse type: , mounting type: , , color: gray

---

## TS-KK 3 - Separating plate

2770215

<https://www.phoenixcontact.com/in/products/2770215>



Separating plate, length: 14 mm, width: 0.5 mm, height: 16 mm, color: gray

# UDK 4 - Feed-through terminal block

2775016

<https://www.phoenixcontact.com/in/products/2775016>

## SBS 6:UNBEDRUCKT - Marker card

1007222

<https://www.phoenixcontact.com/in/products/1007222>



Marker card, Card, white, unlabeled, can be labeled with: Marker pen, mounting type: snapped, snap into flat marker groove, for terminal block width: 6 mm, lettering field size: 6 x 6.1 mm, Number of individual labels: 250

---

## SF-SL 0,6X3,5-100 S-VDE - Screwdriver

1212587

<https://www.phoenixcontact.com/in/products/1212587>



Actuation tool, for ST terminal blocks, VDE insulated, with slimmer insulation integrated in the blade, also suitable for use as a bladed screwdriver, size: 0.6 x 3.5 x 100 mm, 2-component grip, with non-slip grip

# UDK 4 - Feed-through terminal block

2775016

<https://www.phoenixcontact.com/in/products/2775016>

## NS 32 PERF 2000MM-VPE 10 - DIN rail perforated

1201002

<https://www.phoenixcontact.com/in/products/1201002>



DIN rail perforated, acc. to EN 60715, material: Steel, galvanized, passivated with a thick layer, G profile, color: silver, Pack of 10 (20 m)

---

## NS 32 UNPERF 2000MM-VPE 10 - DIN rail, unperforated

1201015

<https://www.phoenixcontact.com/in/products/1201015>



DIN rail, unperforated, acc. to EN 60715, material: Steel, galvanized, passivated with a thick layer, G profile, color: silver, Pack of 10 (20 m)

# UDK 4 - Feed-through terminal block

2775016

<https://www.phoenixcontact.com/in/products/2775016>

## NS 35/ 7,5 PERF 2000MM - DIN rail perforated

0801733

<https://www.phoenixcontact.com/in/products/0801733>



DIN rail perforated, acc. to EN 60715, material: Steel, galvanized, passivated with a thick layer, Standard profile, color: silver, Pack of 25 (50 m)

---

## NS 35/ 7,5 UNPERF 2000MM - DIN rail, unperforated

0801681

<https://www.phoenixcontact.com/in/products/0801681>



DIN rail, unperforated, acc. to EN 60715, material: Steel, galvanized, passivated with a thick layer, Standard profile, color: silver, Pack of 25 (50 m)



# UDK 4 - Feed-through terminal block

2775016

<https://www.phoenixcontact.com/in/products/2775016>

## NS 35/ 7,5 WH PERF 2000MM - DIN rail perforated

1204119

<https://www.phoenixcontact.com/in/products/1204119>



DIN rail perforated, acc. to EN 60715, material: Steel, Galvanized, white passivated, Standard profile, color: silver, Pack of 25 (50 m)

---

## NS 35/ 7,5 WH UNPERF 2000MM-VPE 10 - DIN rail, unperforated

1204122

<https://www.phoenixcontact.com/in/products/1204122>



DIN rail, unperforated, acc. to EN 60715, material: Steel, Galvanized, white passivated, Standard profile, color: silver, Pack of 10 (20 m)

# UDK 4 - Feed-through terminal block

2775016

<https://www.phoenixcontact.com/in/products/2775016>



## NS 35/ 7,5 AL UNPERF 2000MM - DIN rail, unperforated

0801704

<https://www.phoenixcontact.com/in/products/0801704>



DIN rail, unperforated, acc. to EN 60715, material: Aluminum, uncoated, Standard profile, color: silver, Pack of 25 (50 m)

---

## NS 35/ 7,5 ZN PERF 2000MM - DIN rail perforated

1206421

<https://www.phoenixcontact.com/in/products/1206421>



DIN rail perforated, acc. to EN 60715, material: Steel, galvanized, Standard profile, color: silver, Pack of 25 (50 m)

# UDK 4 - Feed-through terminal block

2775016

<https://www.phoenixcontact.com/in/products/2775016>



## NS 35/ 7,5 ZN UNPERF 2000MM - DIN rail, unperforated

1206434

<https://www.phoenixcontact.com/in/products/1206434>



DIN rail, unperforated, acc. to EN 60715, material: Steel, galvanized, Standard profile, color: silver, Pack of 25 (50 m)

---

## NS 35/ 7,5 CU UNPERF 2000MM-VPE 10 - DIN rail, unperforated

0801762

<https://www.phoenixcontact.com/in/products/0801762>



DIN rail, unperforated, acc. to EN 60715, material: Copper, uncoated, Standard profile, color: copper-colored, Pack of 10 (20 m)

# UDK 4 - Feed-through terminal block

2775016

<https://www.phoenixcontact.com/in/products/2775016>



## NS 35/ 7,5 CAP - End cap

1206560

<https://www.phoenixcontact.com/in/products/1206560>

DIN rail end piece, for DIN rail NS 35/7.5



---

## NS 35/15 PERF 2000MM - DIN rail perforated

1201730

<https://www.phoenixcontact.com/in/products/1201730>



DIN rail perforated, similar to EN 60715, material: Steel, galvanized, passivated with a thick layer, Standard profile, color: silver, Pack of 25 (50 m)

# UDK 4 - Feed-through terminal block

2775016

<https://www.phoenixcontact.com/in/products/2775016>

## NS 35/15 UNPERF 2000MM - DIN rail, unperforated

1201714

<https://www.phoenixcontact.com/in/products/1201714>



DIN rail, unperforated, similar to EN 60715, material: Steel, galvanized, passivated with a thick layer, Standard profile, color: silver, Pack of 25 (50 m)

---

## NS 35/15 WH PERF 2000MM - DIN rail perforated

0806602

<https://www.phoenixcontact.com/in/products/0806602>



DIN rail perforated, similar to EN 60715, material: Steel, Galvanized, white passivated, Standard profile, color: white, Pack of 25 (50 m)

# UDK 4 - Feed-through terminal block

2775016

<https://www.phoenixcontact.com/in/products/2775016>

## NS 35/15 WH UNPERF 2000MM-VPE 10 - DIN rail, unperforated

1204135

<https://www.phoenixcontact.com/in/products/1204135>



DIN rail, unperforated, similar to EN 60715, material: Steel, Galvanized, white passivated, Standard profile, color: silver, Pack of 10 (20 m)

---

## NS 35/15 AL UNPERF 2000MM - DIN rail, unperforated

1201756

<https://www.phoenixcontact.com/in/products/1201756>



DIN rail, unperforated, similar to EN 60715, material: Aluminum, uncoated, Standard profile, color: silver

# UDK 4 - Feed-through terminal block

2775016

<https://www.phoenixcontact.com/in/products/2775016>



## NS 35/15 ZN PERF 2000MM - DIN rail perforated

1206599

<https://www.phoenixcontact.com/in/products/1206599>



DIN rail perforated, similar to EN 60715, material: Steel, galvanized, Standard profile, color: silver, Pack of 25 (50 m)

---

## NS 35/15 ZN UNPERF 2000MM - DIN rail, unperforated

1206586

<https://www.phoenixcontact.com/in/products/1206586>



DIN rail, unperforated, similar to EN 60715, material: Steel, galvanized, Standard profile, color: silver, Pack of 25 (50 m)

# UDK 4 - Feed-through terminal block

2775016

<https://www.phoenixcontact.com/in/products/2775016>

## NS 35/15 CU UNPERF 2000MM-VPE 10 - DIN rail, unperforated

1201895

<https://www.phoenixcontact.com/in/products/1201895>



DIN rail, unperforated, similar to EN 60715, material: Copper, uncoated, Standard profile, color: copper-colored, Pack of 10 (20 m)

---

## NS 35/15 CAP - End cap

1206573

<https://www.phoenixcontact.com/in/products/1206573>

DIN rail end piece, for DIN rail NS 35/15





# UDK 4 - Feed-through terminal block

2775016

<https://www.phoenixcontact.com/in/products/2775016>



## NS 35/15-2,3 UNPERF 2000MM-VPE 10 - DIN rail, unperforated

1201798

<https://www.phoenixcontact.com/in/products/1201798>



DIN rail, unperforated, acc. to EN 60715, material: Steel, galvanized, passivated with a thick layer, Standard profile 2.3 mm, color: silver, Pack of 10 (20 m)

---

## ZB 6:UNBEDRUCKT - Zack marker strip

1051003

<https://www.phoenixcontact.com/in/products/1051003>



Zack marker strip, Strip, white, unlabeled, can be labeled with: PLOTMARK, CMS-P1-PLOTTER, mounting type: snapped, for terminal block width: 6.2 mm, lettering field size: 6.15 x 10.5 mm, Number of individual labels: 10

# UDK 4 - Feed-through terminal block

2775016

<https://www.phoenixcontact.com/in/products/2775016>

## ZB 6 CUS - Zack marker strip

0824992

<https://www.phoenixcontact.com/in/products/0824992>



Zack marker strip, can be ordered: Strip, white, labeled according to customer specifications, mounting type: snap into tall marker groove, for terminal block width: 6.2 mm, lettering field size: 6.15 x 10.5 mm, Number of individual labels: 10

---

## ZB 6,LGS:FORTL.ZAHLEN - Zack marker strip

1051016

<https://www.phoenixcontact.com/in/products/1051016>



Zack marker strip, Strip, white, labeled, can be labeled with: CMS-P1-PLOTTER, printed horizontally: consecutive numbers 1 ... 10, 11 ... 20, etc. up to 491 ... 500, mounting type: snapped, for terminal block width: 6.2 mm, lettering field size: 6.15 x 10.5 mm, Number of individual labels: 10

# UDK 4 - Feed-through terminal block

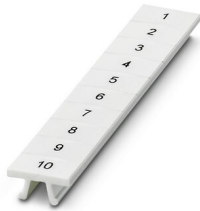
2775016

<https://www.phoenixcontact.com/in/products/2775016>

## ZB 6,QR:FORTL.ZAHLEN - Zack marker strip

1051029

<https://www.phoenixcontact.com/in/products/1051029>



Zack marker strip, Strip, white, labeled, can be labeled with: CMS-P1-PLOTTER, Printed vertically: consecutive numbers 1 ... 10, 11 ... 20, etc. up to 491 ... 500, mounting type: snapped, for terminal block width: 6.2 mm, lettering field size: 6.15 x 10.5 mm, Number of individual labels: 10

---

## ZB 6,LGS:GLEICHE ZAHLEN - Zack marker strip

1051032

<https://www.phoenixcontact.com/in/products/1051032>



Zack marker strip, Strip, white, labeled, can be labeled with: CMS-P1-PLOTTER, printed horizontally: Identical numbers 1 or 2, etc. up to 100, mounting type: snapped, for terminal block width: 6.2 mm, lettering field size: 6.15 x 10.5 mm, Number of individual labels: 10

# UDK 4 - Feed-through terminal block

2775016

<https://www.phoenixcontact.com/in/products/2775016>

## ZB 6,LGS:L1-N,PE - Marker for terminal blocks

1051414

<https://www.phoenixcontact.com/in/products/1051414>



Marker for terminal blocks, Strip, white, labeled, can be labeled with: CMS-P1-PLOTTER, horizontal: L1, L2, L3, N, PE, L1, L2, L3, N, PE, mounting type: snapped, for terminal block width: 6.2 mm, lettering field size: 6.15 x 10.5 mm, Number of individual labels: 10

---

## ZB 6,LGS:U-N - Marker for terminal blocks

1051430

<https://www.phoenixcontact.com/in/products/1051430>



Marker for terminal blocks, Strip, white, labeled, can be labeled with: CMS-P1-PLOTTER, printed horizontally: U, V, W, N, GND, U, V, W, N, GND, mounting type: snapped, for terminal block width: 6.2 mm, lettering field size: 6.15 x 10.5 mm, Number of individual labels: 10

# UDK 4 - Feed-through terminal block



2775016

<https://www.phoenixcontact.com/in/products/2775016>

## UC-TM 6 - Marker for terminal blocks

0818085

<https://www.phoenixcontact.com/in/products/0818085>



Marker for terminal blocks, Sheet, white, unlabeled, can be labeled with: BLUEMARK ID COLOR, BLUEMARK ID, BLUEMARK CLED, PLOTMARK, CMS-P1-PLOTTER, mounting type: snapped, for terminal block width: 6.2 mm, lettering field size: 5.6 x 10.5 mm, Number of individual labels: 80

---

## UC-TM 6 CUS - Marker for terminal blocks

0824589

<https://www.phoenixcontact.com/in/products/0824589>



Marker for terminal blocks, can be ordered: by sheet, white, labeled according to customer specifications, mounting type: snap into tall marker groove, for terminal block width: 6.2 mm, lettering field size: 5.6 x 10.5 mm, Number of individual labels: 80

# UDK 4 - Feed-through terminal block

2775016

<https://www.phoenixcontact.com/in/products/2775016>



## UCT-TM 6 - Marker for terminal blocks

0828736

<https://www.phoenixcontact.com/in/products/0828736>



Marker for terminal blocks, Sheet, white, unlabeled, can be labeled with: TOPMARK NEO, TOPMARK LASER, BLUEMARK ID COLOR, BLUEMARK ID, BLUEMARK CLED, THERMOMARK PRIME, THERMOMARK CARD 2.0, THERMOMARK CARD, mounting type: snapped, for terminal block width: 6.2 mm, lettering field size: 5.6 x 10.5 mm, Number of individual labels: 60

---

## UCT-TM 6 CUS - Marker for terminal blocks

0829602

<https://www.phoenixcontact.com/in/products/0829602>



Marker for terminal blocks, can be ordered: by sheet, white, labeled according to customer specifications, mounting type: snap into tall marker groove, for terminal block width: 6.2 mm, lettering field size: 5.6 x 10.5 mm, Number of individual labels: 60

# UDK 4 - Feed-through terminal block

2775016

<https://www.phoenixcontact.com/in/products/2775016>



## CLIPFIX 35 - End clamp

3022218

<https://www.phoenixcontact.com/in/products/3022218>



Quick mounting end clamp for NS 35/7,5 DIN rail or NS 35/15 DIN rail, with marking option, width: 9.5 mm, color: gray

---

## CLIPFIX 35-5 - End clamp

3022276

<https://www.phoenixcontact.com/in/products/3022276>



Quick mounting end clamp for NS 35/7,5 DIN rail or NS 35/15 DIN rail, with marking option, with parking option for FBS...5, FBS...6, KSS 5, KSS 6, width: 5.15 mm, color: gray

# UDK 4 - Feed-through terminal block

2775016

<https://www.phoenixcontact.com/in/products/2775016>

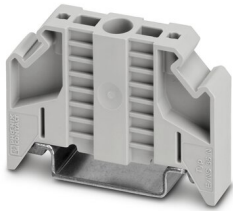


## E/NS 35 N - End clamp

0800886

<https://www.phoenixcontact.com/in/products/0800886>

End clamp, width: 9.5 mm, color: gray



---

## PSBJ 3/13/4 - Female test connector

0201304

<https://www.phoenixcontact.com/in/products/0201304>

Female test connector, number of positions: 1, fuse type: , mounting type: , , ,  
color: silver





# UDK 4 - Feed-through terminal block

2775016

<https://www.phoenixcontact.com/in/products/2775016>

## PSB 3/10/4 - Female test connector

0601292

<https://www.phoenixcontact.com/in/products/0601292>



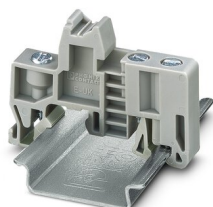
Female test connector, number of positions: 1, fuse type: , mounting type: , , ,  
color: silver

---

## E/UK - End clamp

1201442

<https://www.phoenixcontact.com/in/products/1201442>



End clamp, material: PA, color: gray, Mounting on a DIN rail NS 32 or NS 35

# UDK 4 - Feed-through terminal block

2775016

<https://www.phoenixcontact.com/in/products/2775016>



## E/UK 1 - End clamp

1201413

<https://www.phoenixcontact.com/in/products/1201413>



End clamps, for supporting the ends of double-level and three-level terminal blocks, width: 10 mm, color: gray

---

Phoenix Contact 2023 © - all rights reserved

<https://www.phoenixcontact.com>

PHOENIX CONTACT (I) Pvt. Ltd.

A-58/2, Okhla Industrial Area, Phase - II, New Delhi-110 020

+91.1275.71420

[info@phoenixcontact.co.in](mailto:info@phoenixcontact.co.in)