

OTTA 6-T-P/P - Disconnect terminal block



0790462

<https://www.phoenixcontact.com/in/products/0790462>

Please be informed that the data shown in this PDF document is generated from our Online Catalog. Please find the complete data in the user documentation. Our General Terms of Use for Downloads are valid.



Disconnect terminal block, with disconnect slide and test socket screws for insertion of test plugs, nom. voltage: 800 V, nominal current: 36 A, 1 level, connection method: Bolt connection, Rated cross section: 6 mm², mounting: NS 35/7,5, NS 35/15, NS 32, color: gray

Commercial Data

Item number	0790462
Packing unit	50 pc
Minimum order quantity	1 pc
Sales Key	BE4
Product Key	BE4533
Catalog Page	Page 567 (C-1-2019)
GTIN	4017918005573
Weight per Piece (including packing)	29.14 g
Weight per Piece (excluding packing)	29 g
Customs tariff number	85369010
Country of origin	IN

Technical Data

Product properties

Product type	Bolt connection terminal block
Number of connections	2
Number of rows	1
Potentials	1

Insulation characteristics

Overvoltage category	III
Degree of pollution	3

Electrical properties

Rated surge voltage	8 kV
Maximum power dissipation for nominal condition	1.31 W

Connection data

Number of connections per level	2
Nominal cross section	6 mm ²

1 level

Stripping length	The stripping length depends on the specification provided by the cable lug manufacturer.
Connection in acc. with standard	IEC 60947-7-1
Nominal current	36 A
Maximum load current	36 A (with 6 mm ² conductor cross section)
Nominal voltage	800 V (the nominal voltage applies to insulated cable lugs)
Nominal cross section	6 mm ²

Cable lug connection DIN 46234:1980-03

Connection in acc. with standard	DIN 46234:1980-03
Cross section	0.1 mm ² ... 6 mm ²
Cross section range AWG	24 ... 10 (converted acc. to IEC)
Hole diameter	4.3 mm
Width	9.6 mm
Bolt diameter	4 mm
Screw thread	M4
Tightening torque	1.5 ... 1.8 Nm
Identification color of ring cable lugs : red	1.5 mm ²
Identification color of ring cable lugs : blue	2.5 mm ²
Identification color of ring cable lugs : yellow	6 mm ²
Connection in acc. with standard	DIN 46237:1970-07
Cross section	0.5 mm ² ... 2.5 mm ²
Cross section range AWG	20 ... 14 (converted acc. to IEC)
Hole diameter	4.3 mm

OTTA 6-T-P/P - Disconnect terminal block



0790462

<https://www.phoenixcontact.com/in/products/0790462>

Width	9.6 mm
Bolt diameter	4 mm
Screw thread	M4
Tightening torque	1.5 ... 1.8 Nm

Dimensions

Width	11 mm
End cover width	1.5 mm
Height NS 35/15	59.5 mm
Height NS 35/7,5	52 mm
Height	2.047 "
Height NS 32	57 mm
Length	69 mm

Material specifications

Color	gray
Flammability rating according to UL 94	V0
Insulating material group	I
Insulating material	PA
Static insulating material application in cold	-60 °C
Temperature index of insulation material (DIN EN 60216-1 (VDE 0304-21))	130 °C
Relative insulation material temperature index (Elec., UL 746 B)	130 °C
Fire protection for rail vehicles (DIN EN 45545-2) R22	HL 1 - HL 3
Fire protection for rail vehicles (DIN EN 45545-2) R23	HL 1 - HL 3
Fire protection for rail vehicles (DIN EN 45545-2) R24	HL 1 - HL 3
Fire protection for rail vehicles (DIN EN 45545-2) R26	HL 1 - HL 3
Calorimetric heat release NFPA 130 (ASTM E 1354)	28 MJ/kg
Surface flammability NFPA 130 (ASTM E 162)	passed
Specific optical density of smoke NFPA 130 (ASTM E 662)	passed
Smoke gas toxicity NFPA 130 (SMP 800C)	passed

Electrical tests

Surge voltage test

Test voltage setpoint	9.8 kV
Result	Test passed

Temperature-rise test

Requirement temperature-rise test	Increase in temperature \leq 45 K
Result	Test passed
Short-time withstand current 6 mm ²	0.72 kA
Result	Test passed

Power-frequency withstand voltage

Test voltage setpoint	2.2 kV
-----------------------	--------

OTTA 6-T-P/P - Disconnect terminal block



0790462

<https://www.phoenixcontact.com/in/products/0790462>

Result	Test passed
--------	-------------

Mechanical properties

Mechanical data

Open side panel	Yes
-----------------	-----

Mechanical tests

Mechanical strength

Result	Test passed
--------	-------------

Attachment on the carrier

DIN rail/fixing support	NS 32/NS 35
Test force setpoint	5 N
Result	Test passed

Environmental and real-life conditions

Needle-flame test

Time of exposure	30 s
Result	Test passed

Ambient conditions

Ambient temperature (operation)	-60 °C ... 105 °C (max. short-term operating temperature RTI Elec.)
Ambient temperature (storage/transport)	-25 °C ... 60 °C (for a short time, not exceeding 24 h, -60 °C to +70 °C)
Ambient temperature (assembly)	-5 °C ... 70 °C
Ambient temperature (actuation)	-5 °C ... 70 °C
Permissible humidity (storage/transport)	30 % ... 70 %

Standards and regulations

Connection in acc. with standard	IEC 60947-7-1
----------------------------------	---------------

Mounting

Mounting type	NS 35/7,5
	NS 35/15
	NS 32
Screw thread	M4

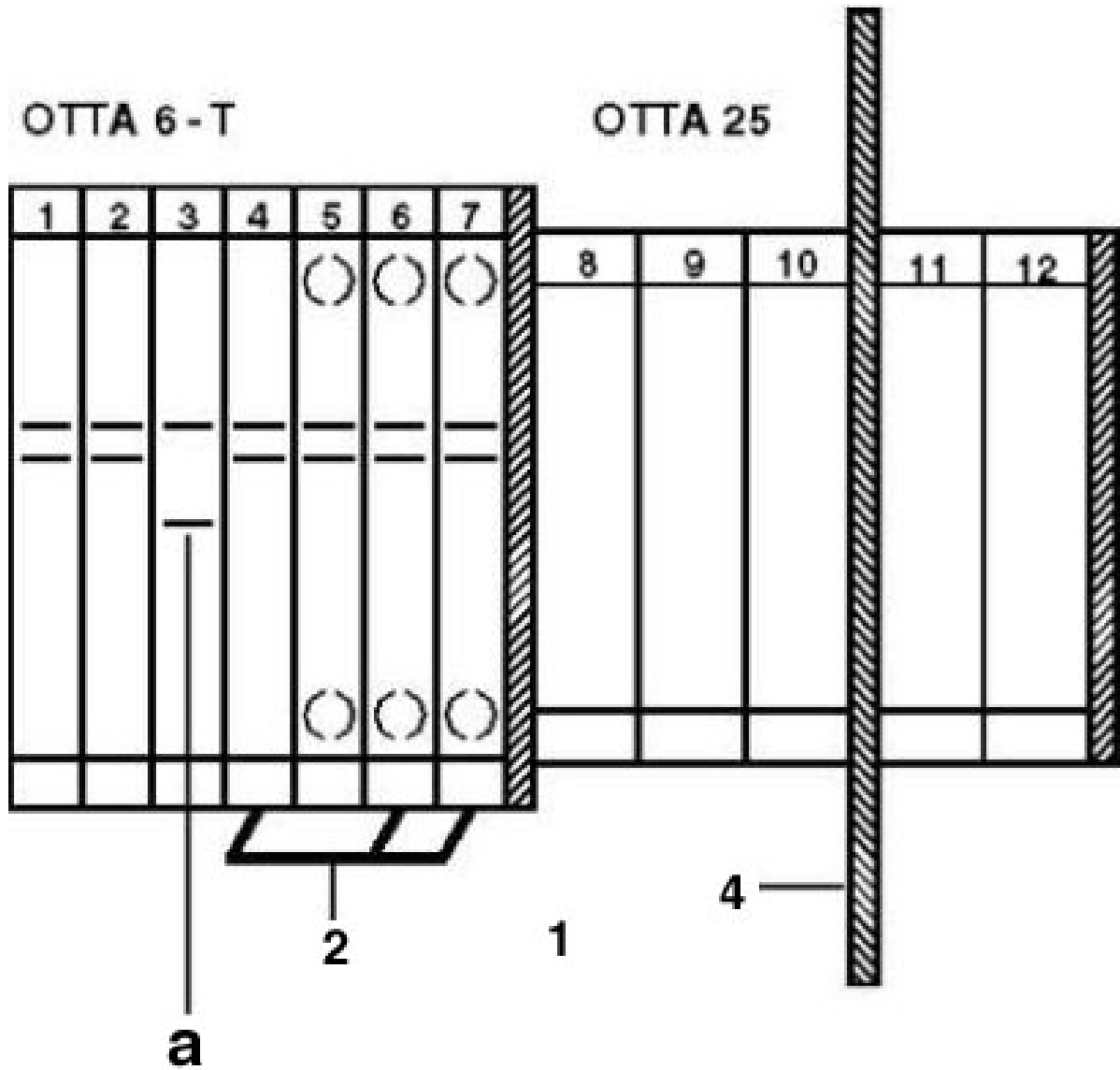
OTTA 6-T-P/P - Disconnect terminal block

0790462

<https://www.phoenixcontact.com/in/products/0790462>

Drawings

Circuit diagram



OTTA 6-T-P/P - Disconnect terminal block



0790462

<https://www.phoenixcontact.com/in/products/0790462>

Circuit diagram




OTTA 6-T-P/P - Disconnect terminal block





0790462

<https://www.phoenixcontact.com/in/products/0790462>

Approvals

 CSA Approval ID: 13631				
	Nominal Voltage U_N	Nominal Current I_N	Cross Section AWG	Cross Section mm^2
	600 V	25 A	22 - 10	-

 UL Recognized Approval ID: E60425				
	Nominal Voltage U_N	Nominal Current I_N	Cross Section AWG	Cross Section mm^2
	600 V	30 A	-	-
	600 V	30 A	-	-

 EAC Approval ID: RU C-DE.BL08.B.00540				
---	--	--	--	--

OTTA 6-T-P/P - Disconnect terminal block



0790462

<https://www.phoenixcontact.com/in/products/0790462>

Classifications

ECLASS

ECLASS-11.0	27141126
ECLASS-12.0	27141126

ETIM

ETIM 8.0	EC000902
----------	----------

UNSPSC

UNSPSC 21.0	39121400
-------------	----------

OTTA 6-T-P/P - Disconnect terminal block



0790462

<https://www.phoenixcontact.com/in/products/0790462>

Environmental Product Compliance

China RoHS	Environmentally friendly use period: unlimited = EFUP-e
	No hazardous substances above threshold values

OTTA 6-T-P/P - Disconnect terminal block

0790462

<https://www.phoenixcontact.com/in/products/0790462>

Accessories

 Note: Applying some accessories below might limit this product.


EB 2-OTTA 6 - Insertion bridge

0790608

<https://www.phoenixcontact.com/in/products/0790608>

Insertion bridge, pitch: 11 mm, number of positions: 2, color: gray



 Max. current carrying capacity: 36 A

EB 3-OTTA 6 - Insertion bridge

3026036

<https://www.phoenixcontact.com/in/products/3026036>

Insertion bridge, pitch: 11.1 mm, number of positions: 3, color: gray



 Max. current carrying capacity: 36 A

OTTA 6-T-P/P - Disconnect terminal block

0790462

<https://www.phoenixcontact.com/in/products/0790462>


EB 4-OTTA 6 - Insertion bridge

3026049

<https://www.phoenixcontact.com/in/products/3026049>

Insertion bridge, pitch: 11.1 mm, number of positions: 4, color: gray



 Max. current carrying capacity: 36 A


EB 5-OTTA 6 - Insertion bridge

3026050

<https://www.phoenixcontact.com/in/products/3026050>

Insertion bridge, pitch: 11.1 mm, number of positions: 5, color: gray



 Max. current carrying capacity: 36 A

OTTA 6-T-P/P - Disconnect terminal block

0790462

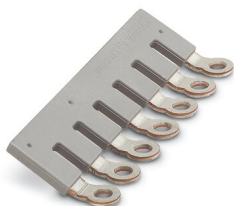
<https://www.phoenixcontact.com/in/products/0790462>


EB 7-OTTA 6 - Insertion bridge

3026052

<https://www.phoenixcontact.com/in/products/3026052>

Insertion bridge, pitch: 11.1 mm, number of positions: 7, color: gray



 Max. current carrying capacity: 36 A


EB 10- OTTA 6 - Insertion bridge

0790420

<https://www.phoenixcontact.com/in/products/0790420>

Insertion bridge, pitch: 11.1 mm, number of positions: 10, color: gray



 Max. current carrying capacity: 36 A

OTTA 6-T-P/P - Disconnect terminal block

0790462

<https://www.phoenixcontact.com/in/products/0790462>

D-OTTA 6-T - End cover

0790459

<https://www.phoenixcontact.com/in/products/0790459>

End cover, length: 69 mm, width: 2 mm, height: 41 mm, color: gray



SZS 1,0X6,5 VDE - Screwdriver

1205079

<https://www.phoenixcontact.com/in/products/1205079>

Screwdriver, slot-headed, VDE insulated, size: 1.0 x 6.5 x 150 mm, 2-component grip, with non-slip grip



OTTA 6-T-P/P - Disconnect terminal block



0790462

<https://www.phoenixcontact.com/in/products/0790462>

S-OTTA 6-T - Switching lock

0311199

<https://www.phoenixcontact.com/in/products/0311199>

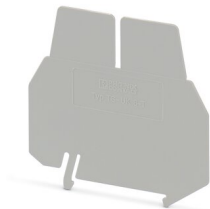


Switching lock, length: 18.8 mm, width: 7.9 mm, height: 21.5 mm, color: white

TS-UK 6-T - Separating plate

3072820

<https://www.phoenixcontact.com/in/products/3072820>



Separating plate, length: 66.5 mm, width: 1 mm, height: 62.5 mm, color: gray

OTTA 6-T-P/P - Disconnect terminal block



0790462

<https://www.phoenixcontact.com/in/products/0790462>

KSS 10 - Short-circuit connector

0310541

<https://www.phoenixcontact.com/in/products/0310541>



Short-circuit connector, pitch: 10 mm, number of positions: 2, color: black

NS 32 PERF 2000MM-VPE 10 - DIN rail perforated

1201002

<https://www.phoenixcontact.com/in/products/1201002>



DIN rail perforated, acc. to EN 60715, material: Steel, galvanized, passivated with a thick layer, G profile, color: silver, Pack of 10 (20 m)

OTTA 6-T-P/P - Disconnect terminal block

0790462

<https://www.phoenixcontact.com/in/products/0790462>



NS 32 UNPERF 2000MM-VPE 10 - DIN rail, unperforated

1201015

<https://www.phoenixcontact.com/in/products/1201015>



DIN rail, unperforated, acc. to EN 60715, material: Steel, galvanized, passivated with a thick layer, G profile, color: silver, Pack of 10 (20 m)

NS 35/ 7,5 PERF 2000MM - DIN rail perforated

0801733

<https://www.phoenixcontact.com/in/products/0801733>



DIN rail perforated, acc. to EN 60715, material: Steel, galvanized, passivated with a thick layer, Standard profile, color: silver, Pack of 25 (50 m)

OTTA 6-T-P/P - Disconnect terminal block



0790462

<https://www.phoenixcontact.com/in/products/0790462>

NS 35/ 7,5 UNPERF 2000MM - DIN rail, unperforated

0801681

<https://www.phoenixcontact.com/in/products/0801681>



DIN rail, unperforated, acc. to EN 60715, material: Steel, galvanized, passivated with a thick layer, Standard profile, color: silver, Pack of 25 (50 m)

NS 35/ 7,5 WH PERF 2000MM - DIN rail perforated

1204119

<https://www.phoenixcontact.com/in/products/1204119>



DIN rail perforated, acc. to EN 60715, material: Steel, Galvanized, white passivated, Standard profile, color: silver, Pack of 25 (50 m)

OTTA 6-T-P/P - Disconnect terminal block

0790462

<https://www.phoenixcontact.com/in/products/0790462>

NS 35/ 7,5 WH UNPERF 2000MM-VPE 10 - DIN rail, unperforated

1204122

<https://www.phoenixcontact.com/in/products/1204122>



DIN rail, unperforated, acc. to EN 60715, material: Steel, Galvanized, white passivated, Standard profile, color: silver, Pack of 10 (20 m)

NS 35/ 7,5 AL UNPERF 2000MM - DIN rail, unperforated

0801704

<https://www.phoenixcontact.com/in/products/0801704>



DIN rail, unperforated, acc. to EN 60715, material: Aluminum, uncoated, Standard profile, color: silver, Pack of 25 (50 m)

OTTA 6-T-P/P - Disconnect terminal block

0790462

<https://www.phoenixcontact.com/in/products/0790462>

NS 35/ 7,5 ZN PERF 2000MM - DIN rail perforated

1206421

<https://www.phoenixcontact.com/in/products/1206421>



DIN rail perforated, acc. to EN 60715, material: Steel, galvanized, Standard profile, color: silver, Pack of 25 (50 m)

NS 35/ 7,5 ZN UNPERF 2000MM - DIN rail, unperforated

1206434

<https://www.phoenixcontact.com/in/products/1206434>



DIN rail, unperforated, acc. to EN 60715, material: Steel, galvanized, Standard profile, color: silver, Pack of 25 (50 m)

OTTA 6-T-P/P - Disconnect terminal block

0790462

<https://www.phoenixcontact.com/in/products/0790462>



NS 35/ 7,5 CU UNPERF 2000MM-VPE 10 - DIN rail, unperforated

0801762

<https://www.phoenixcontact.com/in/products/0801762>



DIN rail, unperforated, acc. to EN 60715, material: Copper, uncoated, Standard profile, color: copper-colored, Pack of 10 (20 m)

NS 35/ 7,5 CAP - End cap

1206560

<https://www.phoenixcontact.com/in/products/1206560>

DIN rail end piece, for DIN rail NS 35/7.5



OTTA 6-T-P/P - Disconnect terminal block



0790462

<https://www.phoenixcontact.com/in/products/0790462>

NS 35/15 PERF 2000MM - DIN rail perforated

1201730

<https://www.phoenixcontact.com/in/products/1201730>



DIN rail perforated, similar to EN 60715, material: Steel, galvanized, passivated with a thick layer, Standard profile, color: silver, Pack of 25 (50 m)

NS 35/15 UNPERF 2000MM - DIN rail, unperforated

1201714

<https://www.phoenixcontact.com/in/products/1201714>



DIN rail, unperforated, similar to EN 60715, material: Steel, galvanized, passivated with a thick layer, Standard profile, color: silver, Pack of 25 (50 m)

OTTA 6-T-P/P - Disconnect terminal block

0790462

<https://www.phoenixcontact.com/in/products/0790462>

NS 35/15 WH PERF 2000MM - DIN rail perforated

0806602

<https://www.phoenixcontact.com/in/products/0806602>



DIN rail perforated, similar to EN 60715, material: Steel, Galvanized, white passivated, Standard profile, color: white, Pack of 25 (50 m)

NS 35/15 WH UNPERF 2000MM-VPE 10 - DIN rail, unperforated

1204135

<https://www.phoenixcontact.com/in/products/1204135>



DIN rail, unperforated, similar to EN 60715, material: Steel, Galvanized, white passivated, Standard profile, color: silver, Pack of 10 (20 m)

OTTA 6-T-P/P - Disconnect terminal block



0790462

<https://www.phoenixcontact.com/in/products/0790462>

NS 35/15 AL UNPERF 2000MM - DIN rail, unperforated

1201756

<https://www.phoenixcontact.com/in/products/1201756>



DIN rail, unperforated, similar to EN 60715, material: Aluminum, uncoated, Standard profile, color: silver

NS 35/15 ZN PERF 2000MM - DIN rail perforated

1206599

<https://www.phoenixcontact.com/in/products/1206599>



DIN rail perforated, similar to EN 60715, material: Steel, galvanized, Standard profile, color: silver, Pack of 25 (50 m)

OTTA 6-T-P/P - Disconnect terminal block

0790462

<https://www.phoenixcontact.com/in/products/0790462>

NS 35/15 ZN UNPERF 2000MM - DIN rail, unperforated

1206586

<https://www.phoenixcontact.com/in/products/1206586>



DIN rail, unperforated, similar to EN 60715, material: Steel, galvanized, Standard profile, color: silver, Pack of 25 (50 m)

NS 35/15 CU UNPERF 2000MM-VPE 10 - DIN rail, unperforated

1201895

<https://www.phoenixcontact.com/in/products/1201895>



DIN rail, unperforated, similar to EN 60715, material: Copper, uncoated, Standard profile, color: copper-colored, Pack of 10 (20 m)

OTTA 6-T-P/P - Disconnect terminal block

0790462

<https://www.phoenixcontact.com/in/products/0790462>

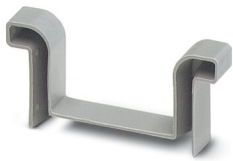


NS 35/15 CAP - End cap

1206573

<https://www.phoenixcontact.com/in/products/1206573>

DIN rail end piece, for DIN rail NS 35/15



NS 35/15-2,3 UNPERF 2000MM-VPE 10 - DIN rail, unperforated

1201798

<https://www.phoenixcontact.com/in/products/1201798>



DIN rail, unperforated, acc. to EN 60715, material: Steel, galvanized, passivated with a thick layer, Standard profile 2.3 mm, color: silver, Pack of 10 (20 m)

OTTA 6-T-P/P - Disconnect terminal block

0790462

<https://www.phoenixcontact.com/in/products/0790462>

ZB 10:UNBEDRUCKT - Zack marker strip

1053001

<https://www.phoenixcontact.com/in/products/1053001>



Zack marker strip, Strip, white, unlabeled, can be labeled with: PLOTMARK, CMS-P1-PLOTTER, mounting type: snapped, for terminal block width: 10.2 mm, lettering field size: 10.5 x 10.15 mm, Number of individual labels: 10

ZB 10 CUS - Zack marker strip

0824941

<https://www.phoenixcontact.com/in/products/0824941>



Zack marker strip, can be ordered: Strip, white, labeled according to customer specifications, mounting type: snap into tall marker groove, for terminal block width: 10.2 mm, lettering field size: 10,15 x 10,5 mm, Number of individual labels: 10

OTTA 6-T-P/P - Disconnect terminal block



0790462

<https://www.phoenixcontact.com/in/products/0790462>

ZB10,LGS:FORTL.ZAHLEN - Zack marker strip

1053014

<https://www.phoenixcontact.com/in/products/1053014>



Zack marker strip, Strip, white, labeled, can be labeled with: CMS-P1-PLOTTER, printed horizontally: consecutive numbers 1 ... 10, 11 ... 20, etc. up to 91 ... 100, mounting type: snapped, for terminal block width: 10.2 mm, lettering field size: 10,15 x 10,5 mm, Number of individual labels: 10

ZB10,QR:FORTL.ZAHLEN - Zack marker strip

1053027

<https://www.phoenixcontact.com/in/products/1053027>



Zack marker strip, Strip, white, labeled, can be labeled with: CMS-P1-PLOTTER, Printed vertically: consecutive numbers 1 ... 10, 11 ... 20, etc. up to 91 ... 100, mounting type: snapped, for terminal block width: 10.2 mm, lettering field size: 10,15 x 10,5 mm, Number of individual labels: 10

OTTA 6-T-P/P - Disconnect terminal block



0790462

<https://www.phoenixcontact.com/in/products/0790462>

ZB10,LGS:L1-N,PE - Marker for terminal blocks

1053412

<https://www.phoenixcontact.com/in/products/1053412>



Marker for terminal blocks, Strip, white, labeled, can be labeled with: CMS-P1-PLOTTER, horizontal: L1, L2, L3, N, PE, L1, L2, L3, N, PE, mounting type: snapped, for terminal block width: 10.2 mm, lettering field size: 10,15 x 10,5 mm, Number of individual labels: 10

ZB10,LGS:U-N - Marker for terminal blocks

1053438

<https://www.phoenixcontact.com/in/products/1053438>



Marker for terminal blocks, Strip, white, labeled, can be labeled with: CMS-P1-PLOTTER, horizontal: U, V, W, N, GND, U, V, W, N, GND, mounting type: snapped, for terminal block width: 10.2 mm, lettering field size: 10,15 x 10,5 mm, Number of individual labels: 10

OTTA 6-T-P/P - Disconnect terminal block



0790462

<https://www.phoenixcontact.com/in/products/0790462>

UC-TM 10 - Marker for terminal blocks

0818069

<https://www.phoenixcontact.com/in/products/0818069>



Marker for terminal blocks, Sheet, white, unlabeled, can be labeled with: BLUEMARK ID COLOR, BLUEMARK ID, BLUEMARK CLED, PLOTMARK, CMS-P1-PLOTTER, mounting type: snapped, for terminal block width: 10.2 mm, lettering field size: 9.6 x 10.5 mm, Number of individual labels: 48

UC-TM 10 CUS - Marker for terminal blocks

0824605

<https://www.phoenixcontact.com/in/products/0824605>



Marker for terminal blocks, can be ordered: by sheet, white, labeled according to customer specifications, mounting type: snap into tall marker groove, for terminal block width: 10.2 mm, lettering field size: 9.6 x 10.5 mm, Number of individual labels: 48

OTTA 6-T-P/P - Disconnect terminal block



0790462

<https://www.phoenixcontact.com/in/products/0790462>

UCT-TM 10 - Marker for terminal blocks

0829142

<https://www.phoenixcontact.com/in/products/0829142>



Marker for terminal blocks, Sheet, white, unlabeled, can be labeled with: TOPMARK NEO, TOPMARK LASER, BLUEMARK ID COLOR, BLUEMARK ID, BLUEMARK CLED, THERMOMARK PRIME, THERMOMARK CARD 2.0, THERMOMARK CARD, mounting type: snapped, for terminal block width: 10.2 mm, lettering field size: 8.9 x 9.6 mm, Number of individual labels: 36

UCT-TM 10 CUS - Marker for terminal blocks

0829623

<https://www.phoenixcontact.com/in/products/0829623>



Marker for terminal blocks, can be ordered: by sheet, white, labeled according to customer specifications, mounting type: snap into tall marker groove, for terminal block width: 10.2 mm, lettering field size: 8.9 x 9.6 mm, Number of individual labels: 36

OTTA 6-T-P/P - Disconnect terminal block

0790462

<https://www.phoenixcontact.com/in/products/0790462>

CLIPFIX 35 - End clamp

3022218

<https://www.phoenixcontact.com/in/products/3022218>



Quick mounting end clamp for NS 35/7,5 DIN rail or NS 35/15 DIN rail, with marking option, width: 9.5 mm, color: gray

CLIPFIX 35-5 - End clamp

3022276

<https://www.phoenixcontact.com/in/products/3022276>



Quick mounting end clamp for NS 35/7,5 DIN rail or NS 35/15 DIN rail, with marking option, with parking option for FBS...5, FBS...6, KSS 5, KSS 6, width: 5.15 mm, color: gray

OTTA 6-T-P/P - Disconnect terminal block

0790462

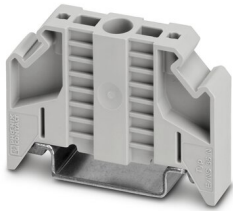
<https://www.phoenixcontact.com/in/products/0790462>

E/NS 35 N - End clamp

0800886

<https://www.phoenixcontact.com/in/products/0800886>

End clamp, width: 9.5 mm, color: gray



E/UK - End clamp

1201442

<https://www.phoenixcontact.com/in/products/1201442>

End clamp, material: PA, color: gray, Mounting on a DIN rail NS 32 or NS 35



OTTA 6-T-P/P - Disconnect terminal block



0790462

<https://www.phoenixcontact.com/in/products/0790462>

E/UK 1 - End clamp

1201413

<https://www.phoenixcontact.com/in/products/1201413>



End clamps, for supporting the ends of double-level and three-level terminal blocks, width: 10 mm, color: gray

Phoenix Contact 2023 © - all rights reserved

<https://www.phoenixcontact.com>

PHOENIX CONTACT (I) Pvt. Ltd.

A-58/2, Okhla Industrial Area, Phase - II, New Delhi-110 020

+91.1275.71420

info@phoenixcontact.co.in