

EB 1/3/5-8 - Insertion bridge

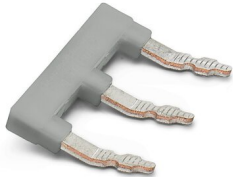


3072341

<https://www.phoenixcontact.com/in/products/3072341>

Please be informed that the data shown in this PDF document is generated from our Online Catalog. Please find the complete data in the user documentation. Our General Terms of Use for Downloads are valid.

Insertion bridge, pitch: 16.4 mm, number of positions: 3, pin assignment: 1,3,5, length: 24 mm, color: gray



Commercial Data

Item number	3072341
Packing unit	10 pc
Minimum order quantity	10 pc
Sales Key	BE1
Product Key	BE1Z2X
GTIN	4055626176031
Weight per Piece (including packing)	4.89 g
Weight per Piece (excluding packing)	4.89 g
Customs tariff number	85366990
Country of origin	CN

EB 1/3/5-8 - Insertion bridge



3072341

<https://www.phoenixcontact.com/in/products/3072341>

Technical Data

Product properties

Product type	Insertion bridge
Number of positions	3
Pitch	16.4 mm
Potentials	1

Dimensions

Width	39 mm
Height	3.3 mm
Length	24 mm
Pitch	16.4 mm

Material specifications

Color	gray
Insulating material	PA

Mechanical properties

Technical data

Pin assignment	1, 3, 5
----------------	---------

Mounting

Mounting type	Screw mounting
---------------	----------------

EB 1/3/5-8 - Insertion bridge



3072341

<https://www.phoenixcontact.com/in/products/3072341>

Classifications

ECLASS

ECLASS-11.0	27141140
ECLASS-12.0	27141140
ECLASS-13.0	27250303

ETIM

ETIM 8.0	EC000489
----------	----------

UNSPSC

UNSPSC 21.0	39121400
-------------	----------

EB 1/3/5-8 - Insertion bridge

3072341

<https://www.phoenixcontact.com/in/products/3072341>



Environmental Product Compliance

China RoHS	Environmentally friendly use period: unlimited = EFUP-e
	No hazardous substances above threshold values

Phoenix Contact 2023 © - all rights reserved
<https://www.phoenixcontact.com>

PHOENIX CONTACT (I) Pvt. Ltd.
A-58/2, Okhla Industrial Area, Phase - II, New Delhi-110 020

+91.1275.71420
info@phoenixcontact.co.in