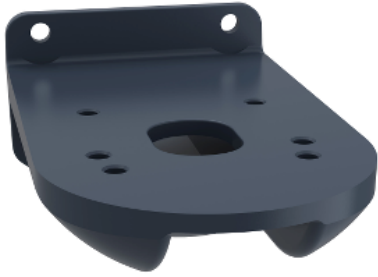


# Product data sheet

Specifications



Fixing plate for use on vertical support for modular tower lights, Harmony XVU, black, 60mm

XVUZ12

## Main

Range of product	Harmony XVU
Product or component type	Modular tower light
Accessory / separate part type	Fixing plate
Accessory / separate part category	Mounting and fixing accessory
Component name	XVU
Mounting diameter	60 mm

## Complementary

Mounting support	Wall mounted
Product compatibility	XVUZ05 XVUZ800 XVUZ400 XVUZ02Q XVUZ02
Material	Aluminium V-0 conforming to UL 94
Housing colour	Black
[Us] rated supply voltage	24 V AC/DC 110...240 V AC
Length	8 mm
Net weight	0.36 kg

## Environment

Ambient air temperature for storage	-40...70 °C
Ambient air temperature for operation	-25...50 °C
IP degree of protection	IP65
Product certifications	CSA UL CE

## Packing Units

Unit Type of Package 1	PCE
Number of Units in Package 1	1

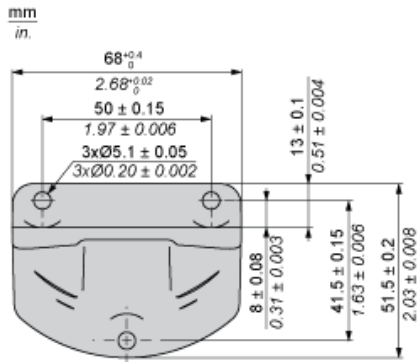
Package 1 Height	5.068 cm
Package 1 Width	6.844 cm
Package 1 Length	11.412 cm
Package 1 Weight	491.0 g
Unit Type of Package 2	CAR
Number of Units in Package 2	10
Package 2 Height	15.6 cm
Package 2 Width	15.3 cm
Package 2 Length	39.8 cm
Package 2 Weight	5.651 kg

## Offer Sustainability

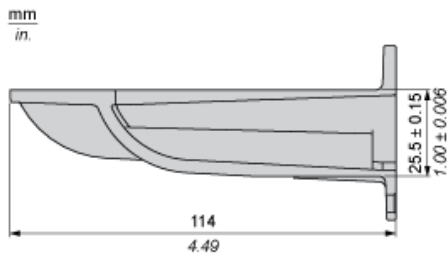
Sustainable offer status	Green Premium product
REACH Regulation	<a href="#">REACH Declaration</a>
EU RoHS Directive	Pro-active compliance (Product out of EU RoHS legal scope) <a href="#">EU RoHS Declaration</a>
Mercury free	Yes
China RoHS Regulation	<a href="#">China RoHS declaration</a>
RoHS exemption information	Yes
Environmental Disclosure	<a href="#">Product Environmental Profile</a>
Circularity Profile	<a href="#">End of Life Information</a>
California proposition 65	WARNING: This product can expose you to chemicals including: Lead and lead compounds, which is known to the State of California to cause cancer and birth defects or other reproductive harm. For more information go to <a href="http://www.P65Warnings.ca.gov">www.P65Warnings.ca.gov</a>

Dimensions

Rear View

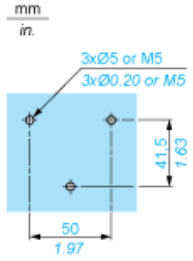


Side View



**Vertical Support Panel Drillings**

---



**Recommended replacement(s)**