

# FL SWITCH LM 8TX - Industrial Ethernet Switch



2832632

<https://www.phoenixcontact.com/in/products/2832632>

Please be informed that the data shown in this PDF document is generated from our Online Catalog. Please find the complete data in the user documentation. Our General Terms of Use for Downloads are valid.

Ethernet Lean Managed Switch with eight 10/100 Mbps RJ45 ports



## Product Description

The compact Lean Managed Switches (LM) enable the flexible and cost-effective creation of managed Ethernet networks in automation applications. Thanks to the wide range of connection versions and the extended temperature range of  $-40^{\circ}\text{C}$  to  $+70^{\circ}\text{C}$ , it optimally meets the requirements of industrial applications. It supports PROFINET conformance class A. And its integrated software enables the redundant creation, diagnostics, and monitoring of networks using IT standard protocols.

## Your advantages

- Ambient temperature  $-40^{\circ}\text{C}$  ...  $70^{\circ}\text{C}$
- Configurable alarm contact
- Web-based management, SNMP
- Configuration can be stored externally
- Comprehensive fiber optic versions
- Compact housing

## Commercial Data

Item number	2832632
Packing unit	1 pc
Minimum order quantity	1 pc
Note	Made to Order (non-returnable)
Sales Key	DNN
Product Key	DNN121
Catalog Page	Page 297 (C-8-2015)
GTIN	4046356078382
Weight per Piece (including packing)	333 g
Weight per Piece (excluding packing)	230 g
Customs tariff number	85176200
Country of origin	DE

# FL SWITCH LM 8TX - Industrial Ethernet Switch



2832632

<https://www.phoenixcontact.com/in/products/2832632>

## Technical Data

### Dimensions

Width	45 mm
Height	99 mm
Depth	112 mm

### Mounting

Mounting type	DIN rail mounting
---------------	-------------------

### Interfaces

#### Ethernet (RJ45)

Connection method	RJ45
Note on the connection method	Auto negotiation and autocrossing
Transmission speed	10/100 Mbps
Transmission physics	Copper
Transmission length	100 m (per segment)
No. of channels	8 (RJ45 ports)

#### Serial (RS-232)

Connection method	RS-232-C, 6-pos. MINI-DIN socket (PS/2)
-------------------	---

### Product properties

Type	Block design
Product type	Switch
Product family	Lean Managed Switch

#### Insulation characteristics

Protection class	III (IEC 61140, EN 61140, VDE 0140-1)
------------------	---------------------------------------

#### Switch functions

Diagnostic functions	1:1-Portmirroring
Basic functions	Store-and-forward switch complies with IEEE 802.3, 2 priority classes according to IEEE 802.1p, TCP/IP protocol, BootP-compatible, port mirroring, integrated web server function, multicast filtering, IGMP snooping, VLAN, Rapid Spanning Tree (RSTP), DHCP server, PTCP filter
Signal contact control voltage	24 V DC (typical)
PROFINET conformance class	Conformance-Class A
PROFINET device function	PTCP filter
Filter functions	Quality of Service
	VLAN (up to 8 VLANs)
	IGMP Query
	Auto-Query-Port
	Extended Multicast Filtering
	Web-based management (HTTP)

# FL SWITCH LM 8TX - Industrial Ethernet Switch



2832632

<https://www.phoenixcontact.com/in/products/2832632>

Management	SNMP v1/v2
	Serial interface (V.24)
Redundancy	STP (Spanning Tree Protocol)
	RSTP (Rapid Spanning Tree Protocol)
	FRD (Fast Ring Detection)
	Large Tree Support
Status and diagnostic indicators	LEDs: US1, US2 (power supply), Fail (alarm contact), 2 LEDs per Ethernet port (Link/Activity and Speed)
Supported browsers	Internet Explorer 5.5 or higher

## Security functions

Basic functions	Store-and-forward switch complies with IEEE 802.3, 2 priority classes according to IEEE 802.1p, TCP/IP protocol, BootP-compatible, port mirroring, integrated web server function, multicast filtering, IGMP snooping, VLAN, Rapid Spanning Tree (RSTP), DHCP server, PTCP filter
-----------------	---

## Electrical properties

Local diagnostics	US Supply voltage Green LED
	Link status Green LED
	Telegrams received Yellow LED
Maximum power dissipation for nominal condition	4.08 W
Transmission medium	Copper

## Supply

Supply voltage (DC)	24 V DC (redundant)
Supply voltage range	18.5 V DC ... 30.5 V DC
Power supply connection	Via COMBICON, max. conductor cross section 2.5 mm <sup>2</sup>
Residual ripple	3.6 V <sub>PP</sub> (within the permitted voltage range)
Typical current consumption	170 mA (at U <sub>S</sub> = 24 V DC)

## Function

Signal contact control voltage	24 V DC (typical)
--------------------------------	-------------------

## Connection data

Connection method	Screw connection
Conductor cross section, rigid	0.2 mm <sup>2</sup> ... 2.5 mm <sup>2</sup>
Conductor cross section, flexible	0.2 mm <sup>2</sup> ... 2.5 mm <sup>2</sup>
Conductor cross section AWG	24 ... 12
Stripping length	7 mm

## Environmental and real-life conditions

### Ambient conditions

Degree of protection	IP20
Ambient temperature (operation)	-40 °C ... 70 °C
Ambient temperature (storage/transport)	-40 °C ... 85 °C
Permissible humidity (operation)	30 % ... 95 % (non-condensing)

Permissible humidity (storage/transport)	30 % ... 95 % (non-condensing)
Vibration (operation)	in acc. with IEC 60068-2-6: 5g, 150 Hz
Air pressure (operation)	80 kPa ... 108 kPa (2000 m above sea level)
Air pressure (storage/transport)	70 kPa ... 108 kPa (3000 m above sea level)

## Standards and regulations

Free from substances that could impair the application of coating	Yes
---	-----

## EMC data

Conformance with EMC directives	IEC 61000-6-2 IEC 61000-4-2 (ESD) Criterion B
	IEC 61000-4-3 (immunity to radiated interference) Criterion A
	IEC 61000-4-4 (burst) Criterion B
	IEC 61000-4-5 (surge) Criterion B
	IEC 61000-4-6 (immunity to conducted interference) Criterion A
	EN 60068-2-30
Noise immunity	EN 61000-6-2:2005
Electromagnetic compatibility	Conformance with EMC Directive 2014/30/EU
Noise emission	EN 61000-6-3/-4

## System properties

### Functionality

Basic functions	Store-and-forward switch complies with IEEE 802.3, 2 priority classes according to IEEE 802.1p, TCP/IP protocol, BootP-compatible, port mirroring, integrated web server function, multicast filtering, IGMP snooping, VLAN, Rapid Spanning Tree (RSTP), DHCP server, PTCP filter
-----------------	---

### System requirements

Supported browsers	Internet Explorer 5.5 or higher
--------------------	---------------------------------

## Signaling

Status display	LEDs: US1, US2 (power supply), Fail (alarm contact), 2 LEDs per Ethernet port (Link/Activity and Speed)
----------------	---

# FL SWITCH LM 8TX - Industrial Ethernet Switch



2832632

<https://www.phoenixcontact.com/in/products/2832632>

## Classifications

### ETIM

ETIM 7.0

EC000734

### UNSPSC

UNSPSC 21.0

43222612

# FL SWITCH LM 8TX - Industrial Ethernet Switch



2832632

<https://www.phoenixcontact.com/in/products/2832632>

## Environmental Product Compliance

China RoHS	Environmentally Friendly Use Period = 50 years For information on hazardous substances, refer to the manufacturer's declaration available under "Downloads"
------------	--

# FL SWITCH LM 8TX - Industrial Ethernet Switch



2832632

<https://www.phoenixcontact.com/in/products/2832632>

## Accessories

### COM CAB MINI DIN - Connecting cable

2400127

<https://www.phoenixcontact.com/in/products/2400127>

Connecting cable, for connecting the controller to a PC (RS-232) for PC WORX with flow control, 3 m in length



---

### FL CAT5 PATCH 1,0 - Patch cable

2832276

<https://www.phoenixcontact.com/in/products/2832276>

Patch cable, CAT5, assembled, 1 m



# FL SWITCH LM 8TX - Industrial Ethernet Switch

2832632

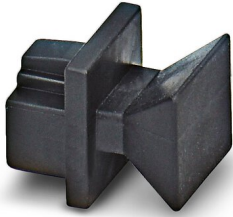
<https://www.phoenixcontact.com/in/products/2832632>

## FL RJ45 PROTECT CAP - Dust protection

2832991

<https://www.phoenixcontact.com/in/products/2832991>

Dust protection caps for RJ45 socket



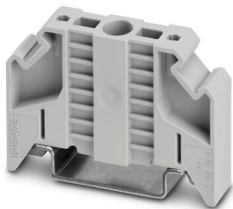
---

## E/NS 35 N - End clamp

0800886

<https://www.phoenixcontact.com/in/products/0800886>

End clamp, width: 9.5 mm, color: gray





# FL SWITCH LM 8TX - Industrial Ethernet Switch



2832632

<https://www.phoenixcontact.com/in/products/2832632>

## FL SNMP OPC SERVER V3 - Driver and interface software

2701139

<https://www.phoenixcontact.com/in/products/2701139>



SNMP-OPC server, German and English, for monitoring and configuration of SNMP-capable equipment in HMI and SCADA systems

---

## FL SNMP OPC AGENT V3 - Driver and interface software

2701136

<https://www.phoenixcontact.com/in/products/2701136>



SNMP-OPC agent, German and English, for integrating OPC-based automation solutions in company-wide network management systems

# FL SWITCH LM 8TX - Industrial Ethernet Switch



2832632

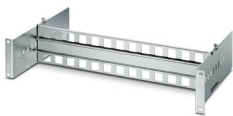
<https://www.phoenixcontact.com/in/products/2832632>

## FL DIN RA - DIN rail adapter

2891053

<https://www.phoenixcontact.com/in/products/2891053>

The FL DIN RA is installed in a standard, 19-inch rack (EIA-310-D, IEC 60297-3-100) to allow DIN rail mounted equipment to be rack mounted.



---

Phoenix Contact 2023 © - all rights reserved

<https://www.phoenixcontact.com>

PHOENIX CONTACT (I) Pvt. Ltd.

A-58/2, Okhla Industrial Area, Phase - II, New Delhi-110 020

+91.1275.71420

[info@phoenixcontact.co.in](mailto:info@phoenixcontact.co.in)