

RIGHT ANGLE PLUGS, EZ FIT TYPE, FOR CORRUGATED CABLES

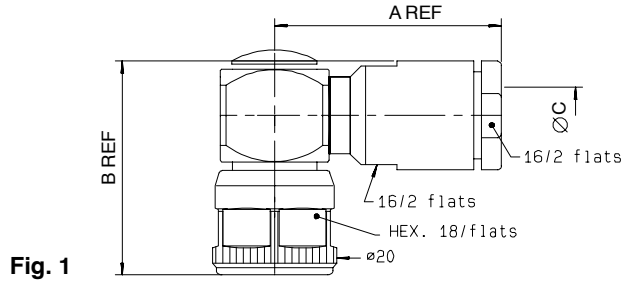


Fig. 1

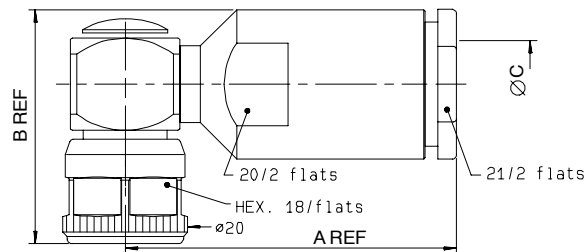


Fig. 2

cable group	part number	fig.	dimensions (mm)			captured center contact	mounting
			A	B	C		
1/4" superflexible corrugated	R161 177 007	1	36.4	34.4	7.85	YES	M23
3/8" superflexible corrugated	R161 177 207	2	54	38.3	11	YES	M23
1/2" superflexible corrugated	R161 177 137	2	54	38.3	14	YES	M23

* Torque wrench : R282 303 020 (page 58)

STRAIGHT JACKS, FULL CRIMP TYPE, FOR FLEXIBLE CABLES (single piece body)

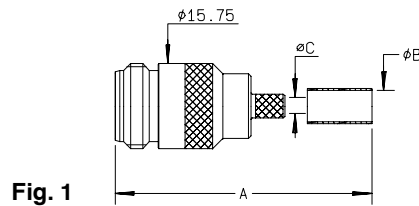


Fig. 1

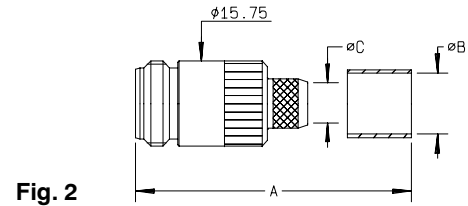
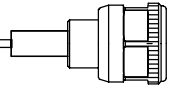


Fig. 2

cable group	part number	fig.	dimensions (mm)			captured center contact	mounting
			A	B	C		
5 / 50 / S	R161 237 000	1	39.3	5.41	3.11	YES	M12
5 / 50 / D	R161 238 000	1	39.3	5.8	3.11	YES	M12
10 / 50 / S	R161 241 000	2	40.6	11.05	7.46	YES	M10
11 / 50 / D	R161 243 000	2	40.6	11.4	7.46	YES	M10

Note : standard packaging = 50 pieces. For unit packaging, add "W" after the P/N.



STRAIGHT JACKS, CLAMP TYPE, FOR FLEXIBLE CABLES

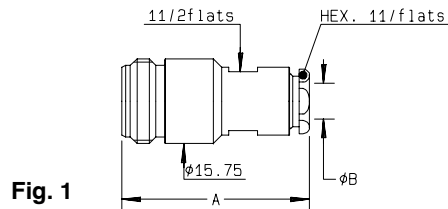


Fig. 1

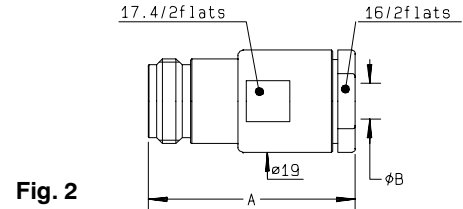


Fig. 2

cable group	part number	fig.	dimensions (mm)		captured center contact	mounting
			A	B		
5 / 50 / S + D	R161 206 000	1	35.3	5.6	YES	M03
10 + 11 / 50 / S + D	R161 220 000	2	39.3	11.2	YES	M05

STRAIGHT JACKS, EZ FIT TYPE, FOR CORRUGATED CABLES

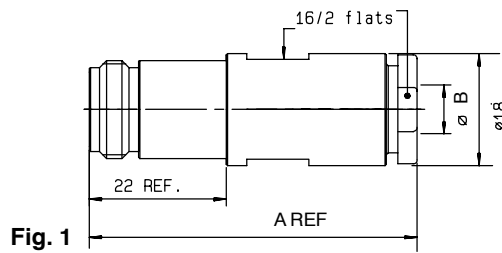


Fig. 1

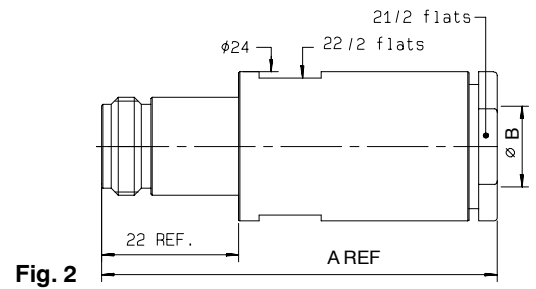
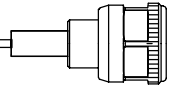


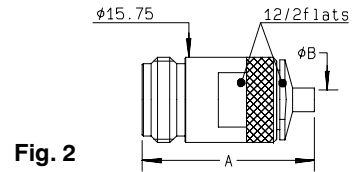
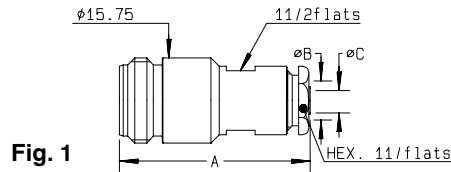
Fig. 2

cable group	part number	fig.	dimensions (mm)			captured center contact	mounting
			A	B	C		
1/4" superflexible corrugated	R161 232 007	1	52.7	7.9		YES	M22
3/8" superflexible corrugated	R161 232 207	2	66	11		YES	M22
1/2" superflexible corrugated	R161 232 407	2	66	14		YES	M22
1/2" flexible corrugated	R161 230 020W	not shown				YES	
7/8" flexible corrugated	R161 231 020W	not shown				YES	

Note : standard packaging = 50 pieces. For unit packaging, add "W" after the P/N.



STRAIGHT JACKS, FOR SEMI RIGID CABLES



cable group	part number	fig.	dimensions (mm)			captured center contact	mounting	note
			A	B	C			
.141"	R161 227 000	1	35.5	5.6	3.65	NO	M06	Clamp type
.141"	R161 227 020●	1	35.5	5.6	3.65	YES	M06	Clamp type
.141"	R161 226 020	2	32	3.65		NO	M21	Solder type

● Upon request

25.4 mm SQUARE FLANGE, STRAIGHT JACKS, FULL CRIMP TYPE, FOR FLEXIBLE CABLES (single piece body) (25.4 mm = 1 inch)

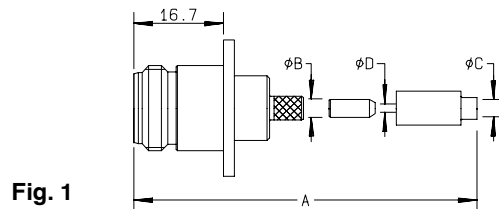
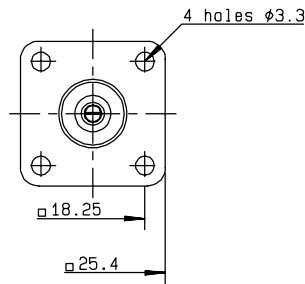


Fig. 1

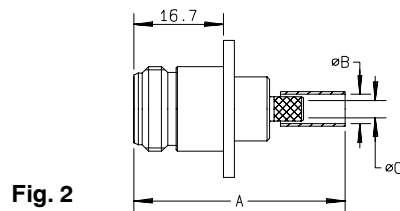


Fig. 2

cable group	part number	fig.	dimensions (mm)				captured center contact	mounting	panel
			A	B	C	D			
2 / 50 / S + D	R161 281 000	1	40.3	3.38	2.55	1	YES	M09	P01
2.6 / 50 / S+D	R161 281 300	1	40.3	3.38	3.25	1.63	YES	M09	P01
5 / 50 / S	R161 282 000	2	39.3	5.41	3.11		YES	M12	P01
5 / 50 / D	R161 283 000	2	39.3	5.8	3.11		YES	M12	P01
10 / 50 / S	R161 286 000	2	40.6	11.05	7.46		YES	M10	P01
11 / 50 / D	R161 286 200	2	40.6	11.4	7.46		YES	M10	P01

Note : standard packaging = 50 pieces. For unit packaging, add "W" after the P/N.