

# ST 16 - Feed-through terminal block



3036149

<https://www.phoenixcontact.com/in/products/3036149>

Please be informed that the data shown in this PDF document is generated from our Online Catalog. Please find the complete data in the user documentation. Our General Terms of Use for Downloads are valid.



Feed-through terminal block, nom. voltage: 1000 V, nominal current: 76 A, number of connections: 2, connection method: Spring-cage connection, 1 level, Rated cross section: 16 mm<sup>2</sup>, cross section: 0.2 mm<sup>2</sup> - 25 mm<sup>2</sup>, mounting type: NS 35/7,5, NS 35/15, color: gray

## Your advantages

- The double bridge shaft not only enables individual chain bridging, but also reducing bridging to spring-cage terminal blocks with smaller cross sections
- The flexible options for reducing bridging in the CLIPLINE complete system can be found in "Accessories for the CLIPLINE complete modular terminal block system"

## Commercial Data

Item number	3036149
Packing unit	50 pc
Minimum order quantity	1 pc
Sales Key	BE2
Product Key	BE2111
Catalog Page	Page 247 (C-1-2019)
GTIN	4017918819309
Weight per Piece (including packing)	36.9 g
Weight per Piece (excluding packing)	36.86 g
Customs tariff number	85369010
Country of origin	PL

# ST 16 - Feed-through terminal block



3036149

<https://www.phoenixcontact.com/in/products/3036149>

## Technical Data

### Product properties

Product type	Feed-through terminal block
Product family	ST
Number of connections	2
Number of rows	1
Potentials	1

### Insulation characteristics

Overvoltage category	III
Degree of pollution	3

### Electrical properties

Rated surge voltage	8 kV
Maximum power dissipation for nominal condition	2.43 W

### Connection data

Number of connections per level	2
Nominal cross section	16 mm <sup>2</sup>

#### 1 level

Stripping length	18 mm
Internal cylindrical gage	A7
Connection in acc. with standard	IEC 60947-7-1
Conductor cross section rigid	0.2 mm <sup>2</sup> ... 25 mm <sup>2</sup>
Cross section AWG	24 ... 4 (converted acc. to IEC)
Conductor cross section flexible	0.2 mm <sup>2</sup> ... 16 mm <sup>2</sup>
Conductor cross section, flexible [AWG]	24 ... 6 (converted acc. to IEC)
Conductor cross-section flexible (ferrule without plastic sleeve)	0.25 mm <sup>2</sup> ... 16 mm <sup>2</sup>
Flexible conductor cross section (ferrule with plastic sleeve)	0.25 mm <sup>2</sup> ... 16 mm <sup>2</sup>
2 conductors with the same cross section, flexible, with TWIN ferrule with plastic sleeve	1.5 mm <sup>2</sup> ... 4 mm <sup>2</sup>
Nominal current	76 A
Maximum load current	90 A (with 25 mm <sup>2</sup> conductor cross section)
Nominal voltage	1000 V
Nominal cross section	16 mm <sup>2</sup>

### Ex data

#### Rated data (ATEX/IECEx)

Identification	□ II 2 GD Ex eb IIC Gb
Operating temperature range	-60 °C ... 110 °C
Ex-certified accessories	3036657 D-ST 16 1206612 SZF 3-1,0X5,5

# ST 16 - Feed-through terminal block



3036149

<https://www.phoenixcontact.com/in/products/3036149>

	3022276 CLIPFIX 35-5
	3022218 CLIPFIX 35
List of bridges	Plug-in bridge / FBS 2-12 / 3005950
Bridge data	60 A / 16 mm <sup>2</sup>
Ex temperature increase	40 K (71.3 A / 16 mm <sup>2</sup> )
Rated voltage	550 V
for bridging with bridge	550 V
Rated insulation voltage	500 V
output	(Permanent)

## Ex level General

Rated current	64.5 A
Maximum load current	81.5 A
Contact resistance	0.34 mΩ

## Ex connection data General

Nominal cross section	16 mm <sup>2</sup>
Rated cross section AWG	6
Connection capacity rigid	1.5 mm <sup>2</sup> ... 25 mm <sup>2</sup>
Connection capacity AWG	16 ... 4
Connection capacity flexible	1.5 mm <sup>2</sup> ... 16 mm <sup>2</sup>
Connection capacity AWG	16 ... 6

## Dimensions

Width	12.2 mm
End cover width	2.2 mm
Height NS 35/15	59 mm
Height NS 35/7,5	51.5 mm
Length	80 mm

## Material specifications

Color	gray
Flammability rating according to UL 94	V0
Insulating material group	I
Insulating material	PA
Static insulating material application in cold	-60 °C
Temperature index of insulation material (DIN EN 60216-1 (VDE 0304-21))	125 °C
Relative insulation material temperature index (Elec., UL 746 B)	130 °C
Fire protection for rail vehicles (DIN EN 45545-2) R22	HL 1 - HL 3
Fire protection for rail vehicles (DIN EN 45545-2) R23	HL 1 - HL 3
Fire protection for rail vehicles (DIN EN 45545-2) R24	HL 1 - HL 3
Fire protection for rail vehicles (DIN EN 45545-2) R26	HL 1 - HL 3
Calorimetric heat release NFPA 130 (ASTM E 1354)	27,5 MJ/kg
Surface flammability NFPA 130 (ASTM E 162)	passed

# ST 16 - Feed-through terminal block



3036149

<https://www.phoenixcontact.com/in/products/3036149>

Specific optical density of smoke NFPA 130 (ASTM E 662)	passed
Smoke gas toxicity NFPA 130 (SMP 800C)	passed

## Electrical tests

### Surge voltage test

Test voltage setpoint	9.8 kV
Result	Test passed

### Temperature-rise test

Requirement temperature-rise test	Increase in temperature $\leq$ 45 K
Result	Test passed
Short-time withstand current 16 mm <sup>2</sup>	1.92 kA
Result	Test passed

### Power-frequency withstand voltage

Test voltage setpoint	2.2 kV
Result	Test passed

## Mechanical properties

### Mechanical data

Open side panel	Yes
-----------------	-----

## Mechanical tests

### Mechanical strength

Result	Test passed
--------	-------------

### Attachment on the carrier

DIN rail/fixing support	NS 35
Test force setpoint	5 N
Result	Test passed

### Test for conductor damage and slackening

Rotation speed	10 rpm
Revolutions	135
Conductor cross section/weight	0.2 mm <sup>2</sup> / 0.2 kg
	16 mm <sup>2</sup> / 2.9 kg
	25 mm <sup>2</sup> / 4.5 kg
Result	Test passed

## Environmental and real-life conditions

### Aging

Temperature cycles	192
Result	Test passed

### Needle-flame test

# ST 16 - Feed-through terminal block



3036149

<https://www.phoenixcontact.com/in/products/3036149>

Time of exposure	30 s
Result	Test passed

## Ambient conditions

Ambient temperature (operation)	-60 °C ... 105 °C (max. short-term operating temperature RTI Elec.)
Ambient temperature (storage/transport)	-25 °C ... 60 °C (for a short time, not exceeding 24 h, -60 °C to +70 °C)
Ambient temperature (assembly)	-5 °C ... 70 °C
Ambient temperature (actuation)	-5 °C ... 70 °C
Permissible humidity (storage/transport)	30 % ... 70 %

## Standards and regulations

Connection in acc. with standard	IEC 60947-7-1
----------------------------------	---------------

## Mounting

Mounting type	NS 35/7,5
	NS 35/15

# ST 16 - Feed-through terminal block

3036149

<https://www.phoenixcontact.com/in/products/3036149>



## Drawings

Circuit diagram




# ST 16 - Feed-through terminal block





3036149


<https://www.phoenixcontact.com/in/products/3036149>


## Approvals


 <b>CSA</b> Approval ID: 13631				
	Nominal Voltage $U_N$	Nominal Current $I_N$	Cross Section AWG	Cross Section $\text{mm}^2$
	600 V	85 A	16 - 4	-
	600 V	85 A	16 - 4	-

 <b>IECEE CB Scheme</b> Approval ID: DE1-62791
--

 <b>LR</b> Approval ID: LR2014888TA
---


 <b>KR</b> Approval ID: HMB17372-EL002
--

 <b>NK</b> Approval ID: 09 ME 140
---

 <b>RS</b> Approval ID: 22.44.01.00083.250
--

 <b>BV</b> Approval ID: 13403/D0 BV
---

 <b>VDE Zeichengenehmigung</b> Approval ID: 40009030				
	Nominal Voltage $U_N$	Nominal Current $I_N$	Cross Section AWG	Cross Section $\text{mm}^2$
	1000 V	76 A	-	1.5 - 16

 <b>cULus Recognized</b> Approval ID: E60425				
	Nominal Voltage $U_N$	Nominal Current $I_N$	Cross Section AWG	Cross Section $\text{mm}^2$
	600 V	85 A	16 - 4	-
	600 V	85 A	16 - 4	-

# ST 16 - Feed-through terminal block



3036149

<https://www.phoenixcontact.com/in/products/3036149>



**ATEX**

Approval ID: KEMA01ATEX2260U



**EAC Ex**

Approval ID: RU C-DE.HA91.B.00066



**IECEX**

Approval ID: IECEX KEM 06.0033U



**CCC**

Approval ID: 2020322313000621



**NEPSI**

Approval ID: GYJ20.1193U



**UKCA-EX**

Approval ID: DEKRA 21UKEX0303U



# ST 16 - Feed-through terminal block



3036149

<https://www.phoenixcontact.com/in/products/3036149>

## Classifications

### ECLASS

ECLASS-11.0

27141120

### ETIM

ETIM 8.0

EC000897

### UNSPSC

UNSPSC 21.0

39121400

# ST 16 - Feed-through terminal block



3036149

<https://www.phoenixcontact.com/in/products/3036149>

## Environmental Product Compliance

China RoHS	Environmentally friendly use period: unlimited = EFUP-e
	No hazardous substances above threshold values

# ST 16 - Feed-through terminal block

3036149

<https://www.phoenixcontact.com/in/products/3036149>

## Accessories

 Note: Applying some accessories below might limit this product.

### FBS 2-12 - Plug-in bridge

3005950

<https://www.phoenixcontact.com/in/products/3005950>



Plug-in bridge, pitch: 12 mm, number of positions: 2, color: red

 Max. current carrying capacity: 76 A

---

### RB PTPower 35-ST 16 - Reducing bridge

3032170

<https://www.phoenixcontact.com/in/products/3032170>



Reducing bridge, For bridging PTPower 35 to ST 16... or PT 16 N terminal blocks, pitch: 14.5 mm, number of positions: 2, length: 5 mm, color: red

 Max. current carrying capacity: 90 A

# ST 16 - Feed-through terminal block

3036149

<https://www.phoenixcontact.com/in/products/3036149>

## RB ST 16-1,5/S - Reducing bridge

3213254

<https://www.phoenixcontact.com/in/products/3213254>



Reducing bridge, pitch: 10 mm, number of positions: 2, length: 37 mm, color: red

 Max. current carrying capacity: 24 A

---


## RB ST 16-(2,5/4) - Reducing bridge

3030886

<https://www.phoenixcontact.com/in/products/3030886>



Reducing bridge, pitch: 11 mm, number of positions: 2, length: 37 mm, color: red

 Max. current carrying capacity: 35

---

# ST 16 - Feed-through terminal block

3036149

<https://www.phoenixcontact.com/in/products/3036149>




## RB 35-16 - Reducing bridge

3032169

<https://www.phoenixcontact.com/in/products/3032169>



Reducing bridge, pitch: 14 mm, number of positions: 2, color: red

 Max. current carrying capacity: 90 A

---


## RB 16-6 - Reducing bridge

3047072

<https://www.phoenixcontact.com/in/products/3047072>



Reducing bridge, pitch: 12.2 mm, number of positions: 2, color: red

 Max. current carrying capacity: 37 A

# ST 16 - Feed-through terminal block

3036149

<https://www.phoenixcontact.com/in/products/3036149>

## D-ST 16 - End cover

3036657

<https://www.phoenixcontact.com/in/products/3036657>

End cover, length: 80 mm, width: 2.2 mm, height: 51.1 mm, color: gray



---

## SZF 3-1,0X5,5 - Screwdriver

1206612

<https://www.phoenixcontact.com/in/products/1206612>

Actuation tool, for ST terminal blocks, also suitable for use as a bladed screwdriver, size: 1.0 x 5.5 x 150 mm, 2-component grip, with non-slip grip



# ST 16 - Feed-through terminal block

3036149

<https://www.phoenixcontact.com/in/products/3036149>

## WST 10/35 - Warning cover

3030006

<https://www.phoenixcontact.com/in/products/3030006>

Warning cover, 5-pos., for terminal widths of 10.2 mm, 12.2 mm, and 16 mm



---

## ST-IL - Mounting material

3039900

<https://www.phoenixcontact.com/in/products/3039900>

Operating decal for the ST terminal block



# ST 16 - Feed-through terminal block

3036149

<https://www.phoenixcontact.com/in/products/3036149>



## NS 35/ 7,5 PERF 2000MM - DIN rail perforated

0801733

<https://www.phoenixcontact.com/in/products/0801733>



DIN rail perforated, acc. to EN 60715, material: Steel, galvanized, passivated with a thick layer, Standard profile, color: silver, Pack of 25 (50 m)

---

## NS 35/ 7,5 UNPERF 2000MM - DIN rail, unperforated

0801681

<https://www.phoenixcontact.com/in/products/0801681>



DIN rail, unperforated, acc. to EN 60715, material: Steel, galvanized, passivated with a thick layer, Standard profile, color: silver, Pack of 25 (50 m)



# ST 16 - Feed-through terminal block

3036149

<https://www.phoenixcontact.com/in/products/3036149>



## NS 35/ 7,5 WH PERF 2000MM - DIN rail perforated

1204119

<https://www.phoenixcontact.com/in/products/1204119>



DIN rail perforated, acc. to EN 60715, material: Steel, Galvanized, white passivated, Standard profile, color: silver, Pack of 25 (50 m)

---

## NS 35/ 7,5 WH UNPERF 2000MM-VPE 10 - DIN rail, unperforated

1204122

<https://www.phoenixcontact.com/in/products/1204122>



DIN rail, unperforated, acc. to EN 60715, material: Steel, Galvanized, white passivated, Standard profile, color: silver, Pack of 10 (20 m)

# ST 16 - Feed-through terminal block

3036149

<https://www.phoenixcontact.com/in/products/3036149>



## NS 35/ 7,5 AL UNPERF 2000MM - DIN rail, unperforated

0801704

<https://www.phoenixcontact.com/in/products/0801704>



DIN rail, unperforated, acc. to EN 60715, material: Aluminum, uncoated, Standard profile, color: silver, Pack of 25 (50 m)

---

## NS 35/ 7,5 ZN PERF 2000MM - DIN rail perforated

1206421

<https://www.phoenixcontact.com/in/products/1206421>



DIN rail perforated, acc. to EN 60715, material: Steel, galvanized, Standard profile, color: silver, Pack of 25 (50 m)

# ST 16 - Feed-through terminal block

3036149

<https://www.phoenixcontact.com/in/products/3036149>



## NS 35/ 7,5 ZN UNPERF 2000MM - DIN rail, unperforated

1206434

<https://www.phoenixcontact.com/in/products/1206434>



DIN rail, unperforated, acc. to EN 60715, material: Steel, galvanized, Standard profile, color: silver, Pack of 25 (50 m)

---

## NS 35/ 7,5 CU UNPERF 2000MM-VPE 10 - DIN rail, unperforated

0801762

<https://www.phoenixcontact.com/in/products/0801762>



DIN rail, unperforated, acc. to EN 60715, material: Copper, uncoated, Standard profile, color: copper-colored, Pack of 10 (20 m)

# ST 16 - Feed-through terminal block

3036149

<https://www.phoenixcontact.com/in/products/3036149>



## NS 35/ 7,5 CAP - End cap

1206560

<https://www.phoenixcontact.com/in/products/1206560>

DIN rail end piece, for DIN rail NS 35/7.5

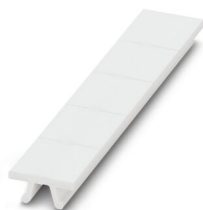


---

## ZB 12:UNPRINTED - Zack marker strip

0812120

<https://www.phoenixcontact.com/in/products/0812120>



Zack marker strip, Strip, white, unlabeled, can be labeled with: PLOTMARK, CMS-P1-PLOTTER, mounting type: snapped, for terminal block width: 12.2 mm, lettering field size: 12 x 10.5 mm, Number of individual labels: 5

# ST 16 - Feed-through terminal block

3036149

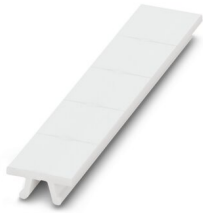
<https://www.phoenixcontact.com/in/products/3036149>



## ZB 12 CUS - Zack marker strip

0824942

<https://www.phoenixcontact.com/in/products/0824942>



Zack marker strip, can be ordered: Strip, white, labeled according to customer specifications, mounting type: snap into tall marker groove, for terminal block width: 12.2 mm, lettering field size: 10.5 x 12.15 mm, Number of individual labels: 5

---

## ZB 12,LGS:L1-N,PE - Zack marker strip

0812146

<https://www.phoenixcontact.com/in/products/0812146>



Zack marker strip, Strip, white, labeled, printed horizontally: L1, L2, L3, N, PE, mounting type: snapped, for terminal block width: 12.2 mm, lettering field size: 10.5 x 12.15 mm, Number of individual labels: 5

# ST 16 - Feed-through terminal block



3036149

<https://www.phoenixcontact.com/in/products/3036149>

## UC-TM 12 - Marker for terminal blocks

0819194

<https://www.phoenixcontact.com/in/products/0819194>



Marker for terminal blocks, Sheet, white, unlabeled, can be labeled with: BLUEMARK ID COLOR, BLUEMARK ID, BLUEMARK CLED, PLOTMARK, CMS-P1-PLOTTER, mounting type: snapped, for terminal block width: 12 mm, lettering field size: 11.45 x 10.5 mm, Number of individual labels: 40

---

## UC-TM 12 CUS - Marker for terminal blocks

0824613

<https://www.phoenixcontact.com/in/products/0824613>



Marker for terminal blocks, can be ordered: by sheet, white, labeled according to customer specifications, mounting type: snap into tall marker groove, for terminal block width: 12 mm, lettering field size: 11.45 x 10.5 mm, Number of individual labels: 40

# ST 16 - Feed-through terminal block



3036149

<https://www.phoenixcontact.com/in/products/3036149>

## UCT-TM 12 - Marker for terminal blocks

0829144

<https://www.phoenixcontact.com/in/products/0829144>



Marker for terminal blocks, Sheet, white, unlabeled, can be labeled with: TOPMARK NEO, TOPMARK LASER, BLUEMARK ID COLOR, BLUEMARK ID, BLUEMARK CLED, THERMOMARK PRIME, THERMOMARK CARD 2.0, THERMOMARK CARD, mounting type: snapped, for terminal block width: 12 mm, lettering field size: 10.8 x 9.6 mm, Number of individual labels: 30

---

## UCT-TM 12 CUS - Marker for terminal blocks

0829630

<https://www.phoenixcontact.com/in/products/0829630>



Marker for terminal blocks, can be ordered: by sheet, white, labeled according to customer specifications, mounting type: snap into tall marker groove, for terminal block width: 12 mm, lettering field size: 10.8 x 9.6 mm, Number of individual labels: 30

# ST 16 - Feed-through terminal block

3036149

<https://www.phoenixcontact.com/in/products/3036149>

## ZBF 12:UNBEDRUCKT - Zack Marker strip, flat

0809735

<https://www.phoenixcontact.com/in/products/0809735>



Zack Marker strip, flat, Strip, white, unlabeled, can be labeled with: PLOTMARK, CMS-P1-PLOTTER, mounting type: snapped, for terminal block width: 12 mm, lettering field size: 5.15 x 12.15 mm, Number of individual labels: 5

---

## ZBF 12 CUS - Zack Marker strip, flat

0825018

<https://www.phoenixcontact.com/in/products/0825018>



Zack Marker strip, flat, can be ordered: Strip, white, labeled according to customer specifications, mounting type: snap into flat marker groove, for terminal block width: 12 mm, lettering field size: 5.15 x 12.15 mm, Number of individual labels: 5



# ST 16 - Feed-through terminal block



3036149

<https://www.phoenixcontact.com/in/products/3036149>

## UC-TMF 12 - Marker for terminal blocks

0819233

<https://www.phoenixcontact.com/in/products/0819233>



Marker for terminal blocks, Sheet, white, unlabeled, can be labeled with: BLUEMARK ID COLOR, BLUEMARK ID, BLUEMARK CLED, PLOTMARK, CMS-P1-PLOTTER, mounting type: snapped, for terminal block width: 12 mm, lettering field size: 11.45 x 5.1 mm, Number of individual labels: 40

---

## UC-TMF 12 CUS - Marker for terminal blocks

0824670

<https://www.phoenixcontact.com/in/products/0824670>



Marker for terminal blocks, can be ordered: by sheet, white, labeled according to customer specifications, mounting type: snap into flat marker groove, for terminal block width: 12 mm, lettering field size: 11.45 x 5.1 mm, Number of individual labels: 40

# ST 16 - Feed-through terminal block

3036149

<https://www.phoenixcontact.com/in/products/3036149>

## UCT-TMF 12 - Marker for terminal blocks

0829214

<https://www.phoenixcontact.com/in/products/0829214>



Marker for terminal blocks, Sheet, white, unlabeled, can be labeled with: TOPMARK NEO, TOPMARK LASER, BLUEMARK ID COLOR, BLUEMARK ID, BLUEMARK CLED, THERMOMARK PRIME, THERMOMARK CARD 2.0, THERMOMARK CARD, mounting type: snapped, for terminal block width: 12 mm, lettering field size: 11.2 x 4.7 mm, Number of individual labels: 30

---

## UCT-TMF 12 CUS - Marker for terminal blocks

0829686

<https://www.phoenixcontact.com/in/products/0829686>



Marker for terminal blocks, can be ordered: by sheet, white, labeled according to customer specifications, mounting type: snap into flat marker groove, for terminal block width: 12 mm, lettering field size: 11.2 x 4.7 mm, Number of individual labels: 30

# ST 16 - Feed-through terminal block

3036149

<https://www.phoenixcontact.com/in/products/3036149>

## MPS-MT - Test plugs

0201744

<https://www.phoenixcontact.com/in/products/0201744>



Test plugs, with solder connection up to 1 mm<sup>2</sup> conductor cross section, number of positions: 1, fuse type: , mounting type: , , color: gray

---

## MPS-IH WH - Insulating sleeve

0201663

<https://www.phoenixcontact.com/in/products/0201663>



Insulating sleeve, fuse type: , mounting type: , , color: white

# ST 16 - Feed-through terminal block

3036149

<https://www.phoenixcontact.com/in/products/3036149>



## MPS-IH RD - Insulating sleeve

0201676

<https://www.phoenixcontact.com/in/products/0201676>

Insulating sleeve, fuse type: , mounting type: , , color: red



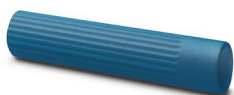
---

## MPS-IH BU - Insulating sleeve

0201689

<https://www.phoenixcontact.com/in/products/0201689>

Insulating sleeve, fuse type: , mounting type: , , color: blue



# ST 16 - Feed-through terminal block

3036149

<https://www.phoenixcontact.com/in/products/3036149>

## MPS-IH YE - Insulating sleeve

0201692

<https://www.phoenixcontact.com/in/products/0201692>

Insulating sleeve, fuse type: , mounting type: , , color: yellow



---

## MPS-IH GN - Insulating sleeve

0201702

<https://www.phoenixcontact.com/in/products/0201702>

Insulating sleeve, fuse type: , mounting type: , , color: green



# ST 16 - Feed-through terminal block

3036149

<https://www.phoenixcontact.com/in/products/3036149>



## MPS-IH GY - Insulating sleeve

0201728

<https://www.phoenixcontact.com/in/products/0201728>

Insulating sleeve, fuse type: , mounting type: , , color: gray



---

## MPS-IH BK - Insulating sleeve

0201731

<https://www.phoenixcontact.com/in/products/0201731>

Insulating sleeve, fuse type: , mounting type: , , color: black



# ST 16 - Feed-through terminal block



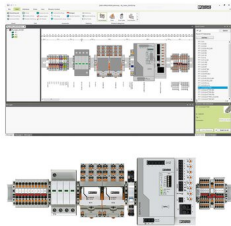
3036149

<https://www.phoenixcontact.com/in/products/3036149>

## PROJECT COMPLETE - Software

1050453

<https://www.phoenixcontact.com/in/products/1050453>



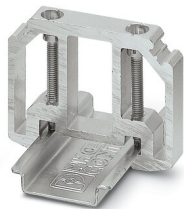
Intuitive planning and marking software for configuring terminal strips and for professional marking of marking materials for terminal blocks, conductors, cables, devices, and systems. The software is available for download

---

## E/AL-NS 35 - End clamp

1201662

<https://www.phoenixcontact.com/in/products/1201662>



End clamp, for end support of UKH 50 to UKH 240, is pushed onto DIN rail NS 35 and fixed with 2 screws, width: 10 mm, color: aluminum

---

Phoenix Contact 2023 © - all rights reserved  
<https://www.phoenixcontact.com>

PHOENIX CONTACT (I) Pvt. Ltd.  
A-58/2, Okhla Industrial Area, Phase - II, New Delhi-110 020

+91.1275.71420  
[info@phoenixcontact.co.in](mailto:info@phoenixcontact.co.in)