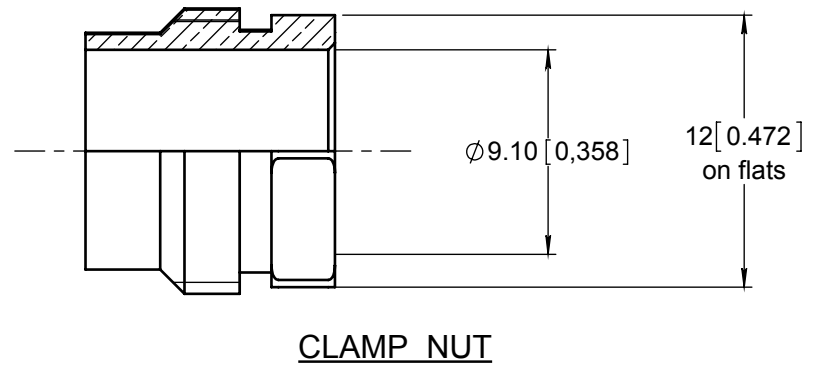
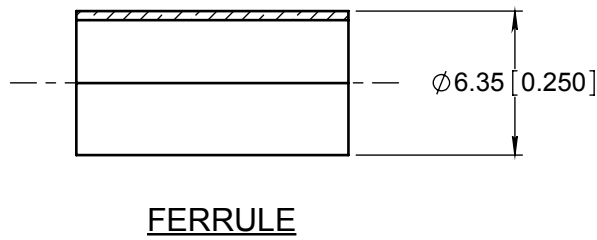
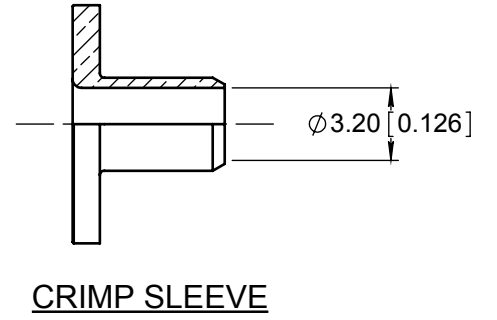
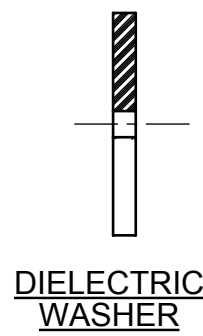
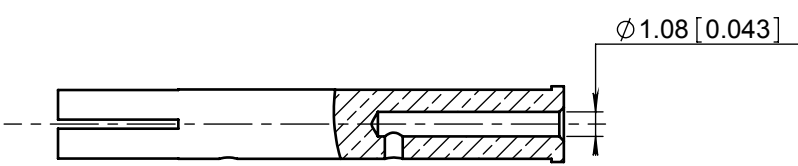
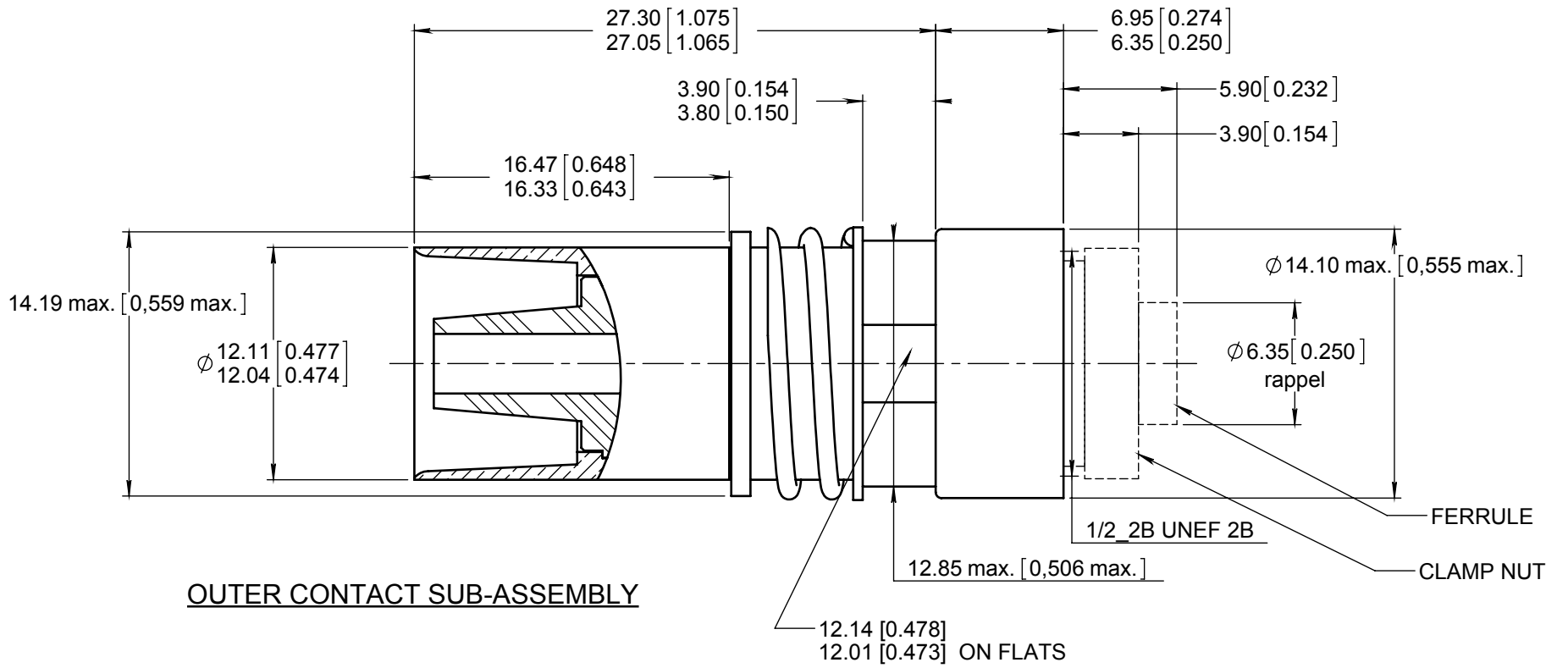


Series NSX	T-CAS - SIZE 1 RF CONTACT RG 142 - RG 400 - TIMES AA 6343 - ECS 3C142B ASNB-E 0293 XF CABLE CRIMP TERMINAISON	Issue: Mar. 13, 2017	Page 1/1
---------------	---	-------------------------	-------------



MATERIAL AND FINISH :

- OUTER CONTACT BODY AND CENTER CONTACT: BERYLLIUM COPPER PER ASTM-B-196
- DIELECTRIC AND DIELECTRIC WASHER: PTFE PER ASTM-D-1710 OR EQUIVALENT
- CRIMP SLEEVE: BRASS PER ASTM-B-16 / B-16M
- FERRULE: BRASS PER ASTM B 453/B453 M
- CLAMP NUT: COPPER ALLOY
- SPRING, C'CLIP AND WASHER: STAINLESS STEEL PER SAE-AMS 5688

FINISH :

- OUTER CONTACT BODY, CRIMP SLEEVE, CENTER CONTACT, CLAMP NUT AND FERRULE: PLATING .00005 INCH OF GOLD PER MIL-G-45204 TYPE I OR II GRADE C OR D CLASS 1 OVER NICKEL QQ-N-290
- WASHER: PASSIVATED
- C'CLIP: NICKEL PROTECTED

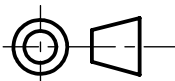
ELECTRICAL CHARACTERISTICS :

- IMPEDANCE : 50 OHMS
- DIELECTRIC WITHSTANDING VOLTAGE : 1500 V

NOTES:

- WIRING INSTRUCTIONS : RP 6178
- Weight: 25 g. [0.882 ounces] max.
- Clamp nut coupling torque: 1,13 to 1,69 N.m [10 to 15 Lbf.in]

DIMENSIONS : mm (inch are given for information only)



Estimated weight : 20.5 g

CREATION	Mar. 13, 17	Updated flat dimension per ARINC 600	Pécault	Legendre
	April. 17, 12	TDS updated : flats .478 becomes .480	Moutault	Dupuis
	Dec 19, 11	Weight and clamp nut coupling torque added	Perrin H.	Dupuis
	Dec. 02, 11	TDS updated	Moutault	Dupuis
	Feb. 16, 11	Drawing on SdW and dimension updated	Moutault	Brochet
	Dec. 16, 96	Redraw	Valgresy	/
PEN:				
NOM: FALETTI				
DATE: Sept. 19, 1990				
APPR.:	Issue	Revisions	Name	Approved

This document contains proprietary information and such information shall not be disclosed to any third party for any purpose whatsoever or used for manufacturing purposes without prior written agreement from RADIALL. This information is given as an indication. In the continual goal to improve our products, we reserve the right to make any modifications judged necessary.

4112_9311