

# Product data sheet

Specifications



## body for BCD encoded output switch - 1 pole - 45° - 12 A - for Ø 22 mm

K1C024BX

! Discontinued on: 29 January 2021

! Discontinued

### Main

Range of product	Harmony K
Product or component type	Cam switch body
Component name	K1
[Ith] conventional free air thermal current	12 A
Sub-assembly composition	Contact blocks + fixing plate
Cam switch function	BCD encoded output switch
Off position	Without Off position
Switching positions	Right: 0° - 45° - 90° - 135°
Mounting location	Front
Fixing mode	Ø 22 mm hole
Bezel material	Metal

### Complementary

Number of decimal	4
Switching angle	45 °
[Ui] rated insulation voltage	690 V (pollution degree 3) conforming to IEC 60947-1
[Ithe] conventional enclosed thermal current	10 A
Rated operational power in W	10500 W AC-21, 500 - 660 V 3 phases conforming to IEC 947-3 1100 W AC-3, 230 V 3 phases conforming to IEC 947-3 1500 W AC-23A, 230 V 3 phases conforming to IEC 947-3 1500 W AC-3, 400 V 1 phase conforming to IEC 947-3 1500 W AC-3, 400 V 3 phases conforming to IEC 947-3 1500 W AC-3, 500 V 3 phases conforming to IEC 947-3 1500 W AC-3, 690 V 3 phases conforming to IEC 947-3 2200 W AC-23A, 400 V 3 phases conforming to IEC 947-3 2200 W AC-23A, 500 V 3 phases conforming to IEC 947-3 2200 W AC-23A, 690 V 3 phases conforming to IEC 947-3 4800 W AC-21, 230 V 3 phases conforming to IEC 947-3 600 W AC-3, 230 V 1 phase conforming to IEC 947-3 8300 W AC-21, 400 V 3 phases conforming to IEC 947-3
[Ie] rated operational current AC	1.8 A at 690 V AC-3 3 phases conforming to IEC 947-3 2.8 A at 500 V AC-3 3 phases conforming to IEC 947-3 2.8 A at 690 V AC-23A 3 phases conforming to IEC 947-3 3.3 A at 400 V AC-3 3 phases conforming to IEC 947-3 3.8 A at 500 V AC-23A 3 phases conforming to IEC 947-3 4.6 A at 230 V AC-3 3 phases conforming to IEC 947-3 4.8 A at 400 V AC-23A 3 phases conforming to IEC 947-3

5.6 A at 230 V AC-23A 3 phases conforming to IEC 947-3  
 1 A at 500 V AC-15 conforming to IEC 947-5-1  
 2 A at 400 V AC-15 conforming to IEC 947-5-1  
 3 A at 230 V AC-15 conforming to IEC 947-5-1

<b>Electrical durability</b>	1000000 cycles AC-15 1000000 cycles AC-21 500000 cycles AC-23 500000 cycles AC-3
<b>Maximum operating rate</b>	2.5 cyc/mn AC-21 2.5 cyc/mn AC-23 2.5 cyc/mn AC-3 8.333 cyc/mn AC-15
<b>Short-circuit current</b>	10000 A
<b>Short-circuit protection</b>	16 A cartridge fuse, type gG
<b>[Uimp] rated impulse withstand voltage</b>	4 kV in isolating function 6 kV conforming to IEC 947-1
<b>Contact operation</b>	Slow-break
<b>Positive opening</b>	With
<b>Electrical connection</b>	Captive screw clamp terminals flexible, clamping capacity: 2 x 1.5 mm <sup>2</sup> Captive screw clamp terminals solid, clamping capacity: 1 x 2.5 mm <sup>2</sup>
<b>Mechanical durability</b>	1000000 cycles
<b>Net weight</b>	0.183 kg

## Environment

<b>Standards</b>	EN 60947-3 for power circuit EN 60947-5-1 for control circuit IEC 60947-3 for power circuit IEC 60947-5-1 for control circuit CENELEC EN 50013
<b>Product certifications</b>	CSA 240 V 1 hp 1 phase CSA 240 V 3 hp 3 phases 2 -pole(s) UL 240 V 1 hp 3 phases UL 240 V 0.33 hp 1 phase 2 -pole(s)
<b>Protective treatment</b>	TC
<b>Ambient air temperature for operation</b>	-25...55 °C
<b>Ambient air temperature for storage</b>	-40...70 °C
<b>Shock resistance</b>	30 gn conforming to IEC 68-2-27
<b>Vibration resistance</b>	5 gn conforming to IEC 68-2-6 (f = 10...150 Hz)
<b>Overvoltage category</b>	Class II conforming to IEC 536 Class II conforming to NF C 20-030

## Packing Units

<b>Unit Type of Package 1</b>	PCE
<b>Number of Units in Package 1</b>	1
<b>Package 1 Height</b>	8 cm
<b>Package 1 Width</b>	6.5 cm
<b>Package 1 Length</b>	6.5 cm
<b>Package 1 Weight</b>	199 g

## Offer Sustainability

<b>Sustainable offer status</b>	Green Premium product
<b>REACH Regulation</b>	<a href="#">REACH Declaration</a>
<b>REACH free of SVHC</b>	Yes

<b>EU RoHS Directive</b>	Pro-active compliance (Product out of EU RoHS legal scope) <a href="#">EU RoHS Declaration</a>
<b>Toxic heavy metal free</b>	Yes
<b>Mercury free</b>	Yes
<b>China RoHS Regulation</b>	<a href="#">China RoHS declaration</a>
<b>RoHS exemption information</b>	Yes
<b>Environmental Disclosure</b>	<a href="#">Product Environmental Profile</a>
<b>WEEE</b>	The product must be disposed on European Union markets following specific waste collection and never end up in rubbish bins
<b>California proposition 65</b>	WARNING: This product can expose you to chemicals including: Nickel compounds, which is known to the State of California to cause cancer, and Di-isodecyl phthalate (DIDP), which is known to the State of California to cause birth defects or other reproductive harm. For more information go to <a href="http://www.P65Warnings.ca.gov">www.P65Warnings.ca.gov</a>

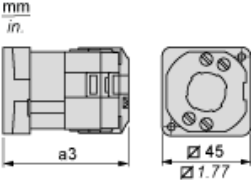
## Contractual warranty

<b>Warranty</b>	18 months
-----------------	-----------

Body with Metal Base, Secured by Needle Screws

---

Front Mounting by Ø 22 mm/0.87 in. Hole



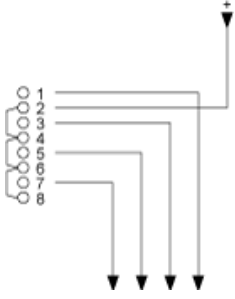
a3 65 mm/2.56 in.

**Link Positions (Factory Mounted)**

---

**Diagram for 1 to 12-decimal BCD Encoded Output Switches**

Select the maximum number of decimals according to the product characteristics.



**Angular Position of Switch**

---

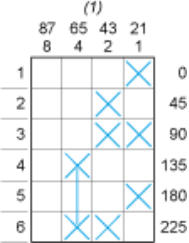


Switching Program

---

Diagram for 1 to 6-decimal BCD Encoded Output Switches

Select the maximum number of decimals according to the product characteristics.



(1) Contact marking value

**Convention Used for Switching Program Representation**

---

Contact closed

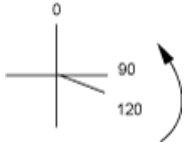
Contact closed in 2 positions and maintained between the 2 positions

Sealed assembly for auto-maintain control

Overlapping contacts

Spring return position: for a switching angle of 90°, spring return is over 30° after the last position (for a maximum of 3 simultaneous contacts).

Example:



**Recommended replacement(s)**

K1C024BX is replaced by the following product range:



**Harmony K**

Ø 16-22 mm rotary cam switches

Products: 626