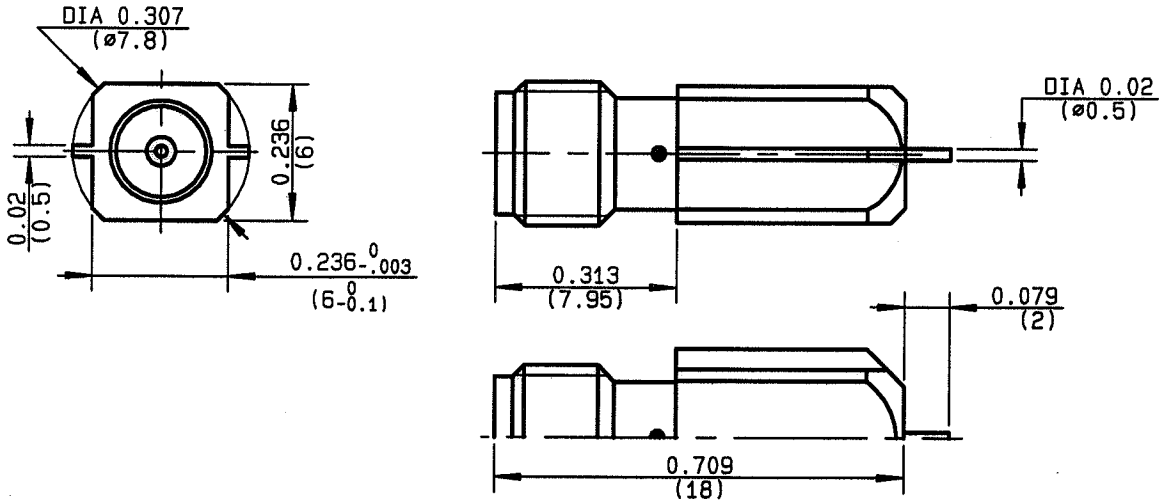


**STRAIGHT JACK RECEPTACLE SMT
EDGE CARD TYPE**

R124.423.033
SERIES SMA B



NOMINAL IMPEDANCE	50	Ω
FREQUENCY RANGE	0-18	GHz
TEMPERATURE RATING	-65/+105	°C
V.S.W.R	1.05 + .05 x F(GHz)	Maxi
RF INSERTION LOSS	.05 √F(GHz)	dB Maxi
VOLTAGE RATING	500	V _{eff} Maxi
DIELECTRIC WITHSTANDING VOLTAGE	1000	V _{eff} Mini
INSULATION RESISTANCE	5000	M ΩMini
HERMETIC SEAL	NA	Atm.cm ³ /s
PACKAGE (pressurized only)	NA	
MECHANICAL DURABILITY	100	Cycles
WEIGHT	3.07	gr
SPECIFICATION		

CABLES :

OTHERS CHARACTERISTICS

UNIT PACKAGING

CABLE RETENTION	NA	N Mini
CENTER CONTACT RETENTION		
Axial force - mating end	15	N Mini
Axial force - opposite end	15	N Mini
Torque	0.5	cm.N Mini
RECOMMENDED TORQUES		
Mating	40	cm.N
Panel nut	NA	cm.N
Clamp nut	NA	cm.N

CONNECTOR PARTS:	MATERIALS	FINISH	(all values are given in micrometers)
BODY	BRASS	GOLD 0.2 OVER NICKEL 2	
OUTER CONTACT			
CENTER CONTACT	BERYLLIUM COPPER	GOLD 1.3 OVER COPPER 2.5	
INSULATOR	PTFE	-	
GASKET		-	
OTHERS PIECES			

FANJA

ISSUE	CREATION DATE	FILE PART-NUMBER
9811B00	16-JAN-97	96-0019-025



RADIALL®

The information given here is subject to change without notice. Design changes may be in order to improve the product.

Connect to the future



R124.423.033

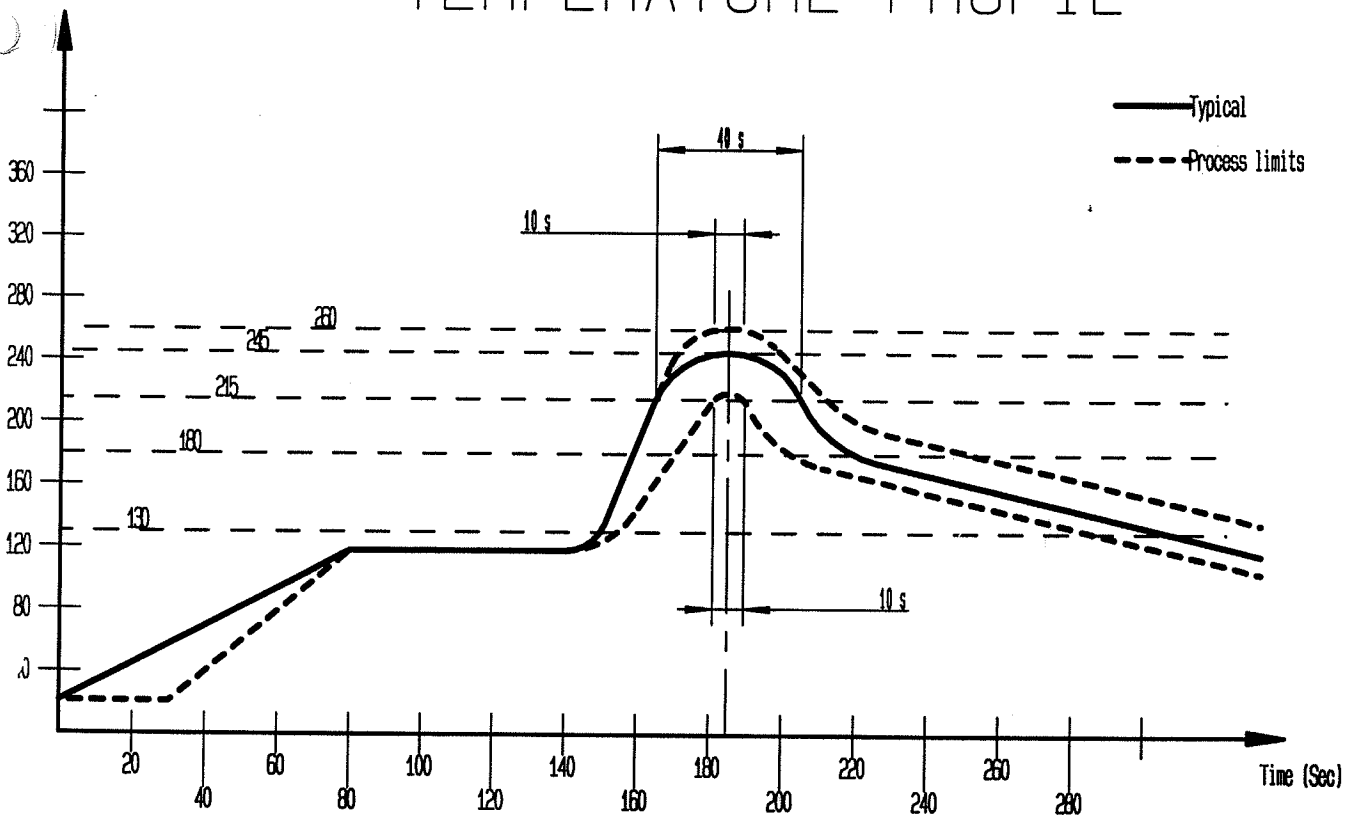
ISSUE **9811B00** SERIES **SMA B**

SOLDER PROCEDURE

- 1 - Deposit solder paste "Sn63Pb35Ag2" on mounting zone by screen printing application. We recommend a low Residue Solid flux.
We advise a thickness of 200 micromm (7.800 microinch). Verify that the edges of the zone are clean.
- 2 - Placement of the receptacle on the mounting zone with an automatic machine of "pick and place" type. Aspiration port (see page 3/3) centered into body and push against it.
Video camera is preferred to check the positioning of the component. (See page 3)
Adhesive agents are forbidden on the receptacle.
- 3 - Soldering by infra-red reflow.
We give under, the typical profile to use.
- 4 - Cleaning of printed circuit boards .
- 5 - Checking of solder joints and position of the component by visual inspection.

Temperature (Degre C)

TEMPERATURE PROFIL



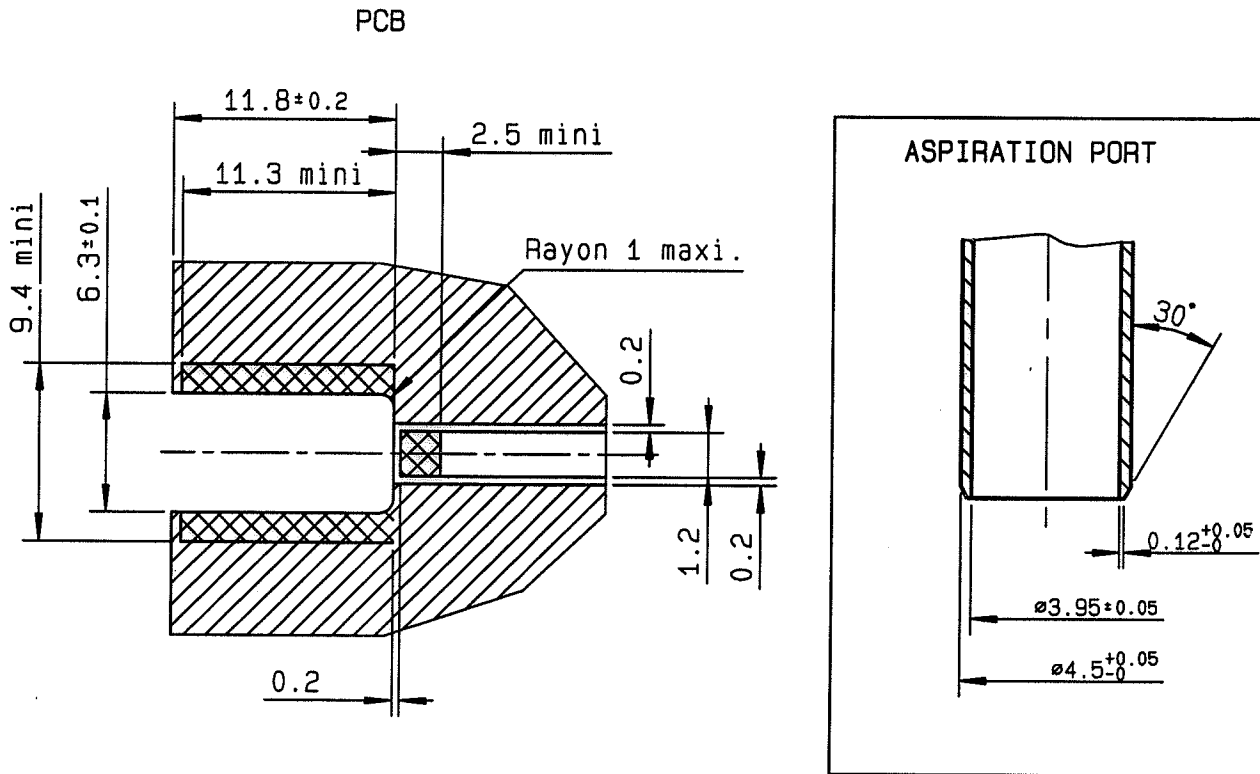


RADIALL®

R124.423.033

ISSUE **9811B00**

SERIES
SMA B



COPLANAR LINE

Pattern and signal are on the same side
 Thickness of PCB : .063 (1.6 mm)
 The material of PCB is the epoxy resin
 of glass fabrics baos. (Er = 4.8)
 The solder resist should be printed
 except for the land pattern on the PCB.

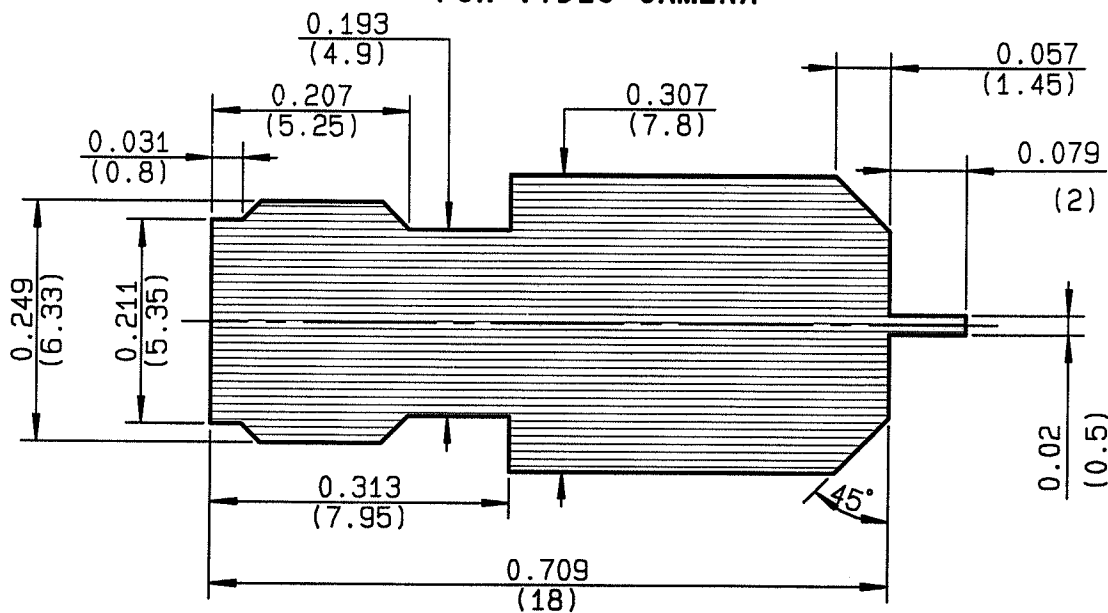


Pattern



Land for solder paste

**SHADOW OF MCX RECEPTACLE
FOR VIDEO CAMERA**



FANJAT