

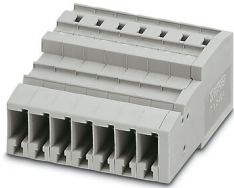
SC 4/ 7 - COMBI receptacle



3042502

<https://www.phoenixcontact.com/in/products/3042502>

Please be informed that the data shown in this PDF document is generated from our Online Catalog. Please find the complete data in the user documentation. Our General Terms of Use for Downloads are valid.



COMBI receptacle, nom. voltage: 800 V, nominal current: 32 A, connection method: Spring-cage connection, Rated cross section: 4 mm², cross section: 0.08 mm² - 6 mm², color: gray

Your advantages

- Standard strain relief can be used
- Tested for railway applications

Commercial Data

Item number	3042502
Packing unit	25 pc
Minimum order quantity	25 pc
Sales Key	BE2
Product Key	BE2145
Catalog Page	Page 341 (C-1-2019)
GTIN	4046356012645
Weight per Piece (including packing)	36.966 g
Weight per Piece (excluding packing)	36.966 g
Customs tariff number	85366990
Country of origin	PL

SC 4/ 7 - COMBI receptacle



3042502

<https://www.phoenixcontact.com/in/products/3042502>

Technical Data

Product properties

Product type	Terminal coupling
Number of positions	7
Pitch	6.2 mm
Area of application	Railway industry
	Machine building
	Plant engineering
Number of connections	2
Number of rows	1

Insulation characteristics

Overvoltage category	III
Degree of pollution	3

Electrical properties

Rated surge voltage	8 kV
Maximum power dissipation for nominal condition	1.02 W

Connection data

Nominal cross section	4 mm ²
Stripping length	8 mm ... 10 mm
Internal cylindrical gage	A4
Connection in acc. with standard	IEC 61984
Conductor cross section rigid	0.08 mm ² ... 6 mm ²
Cross section AWG	28 ... 10 (converted acc. to IEC)
Conductor cross section flexible	0.08 mm ² ... 4 mm ²
Conductor cross section, flexible [AWG]	28 ... 10 (converted acc. to IEC)
Conductor cross-section flexible (ferrule without plastic sleeve)	0.14 mm ² ... 4 mm ²
Flexible conductor cross section (ferrule with plastic sleeve)	0.14 mm ² ... 4 mm ²
2 conductors with the same cross section, flexible, with TWIN ferrule with plastic sleeve	0.5 mm ² ... 1 mm ²
Nominal current	32 A
Maximum load current	32 A (with 6 mm ² conductor cross section)
Nominal voltage	800 V
Nominal cross section	4 mm ²

Dimensions

Width	43.4 mm
End cover width	3.2 mm
Height	22.3 mm
Length	48.6 mm
Pitch	6.2 mm

SC 4/ 7 - COMBI receptacle



3042502

<https://www.phoenixcontact.com/in/products/3042502>

Material specifications

Color	gray
Flammability rating according to UL 94	V0
Insulating material group	I
Insulating material	PA
Static insulating material application in cold	-60 °C
Temperature index of insulation material (DIN EN 60216-1 (VDE 0304-21))	130 °C
Relative insulation material temperature index (Elec., UL 746 B)	130 °C
Fire protection for rail vehicles (DIN EN 45545-2) R22	HL 1 - HL 3
Fire protection for rail vehicles (DIN EN 45545-2) R23	HL 1 - HL 3
Fire protection for rail vehicles (DIN EN 45545-2) R24	HL 1 - HL 3
Fire protection for rail vehicles (DIN EN 45545-2) R26	HL 1 - HL 3
Calorimetric heat release NFPA 130 (ASTM E 1354)	28 MJ/kg
Surface flammability NFPA 130 (ASTM E 162)	passed
Specific optical density of smoke NFPA 130 (ASTM E 662)	passed
Smoke gas toxicity NFPA 130 (SMP 800C)	passed

Mechanical properties

Mechanical data

Open side panel	Yes
-----------------	-----

Environmental and real-life conditions

Ambient conditions

Ambient temperature (operation)	-60 °C ... 105 °C (max. short-term operating temperature RTI Elec.)
Ambient temperature (storage/transport)	-25 °C ... 60 °C (for a short time, not exceeding 24 h, -60 °C to +70 °C)
Ambient temperature (assembly)	-5 °C ... 70 °C
Ambient temperature (actuation)	-5 °C ... 70 °C
Permissible humidity (storage/transport)	30 % ... 70 %

Standards and regulations

Connection in acc. with standard	IEC 61984
----------------------------------	-----------

SC 4/ 7 - COMBI receptacle

3042502

<https://www.phoenixcontact.com/in/products/3042502>

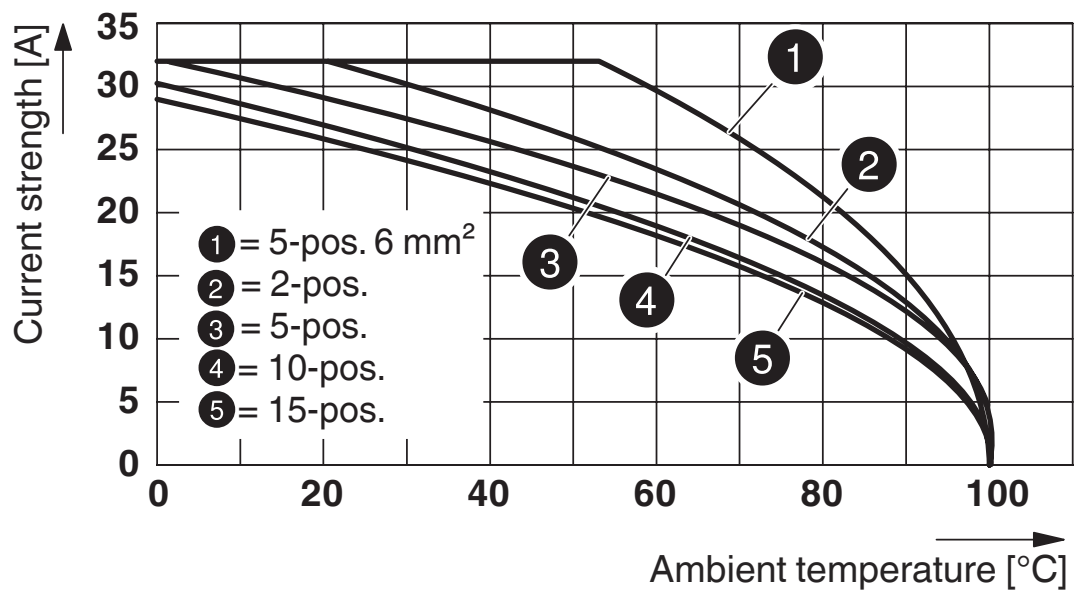


Drawings

Circuit diagram



Diagram



SC 4/ 7 - COMBI receptacle



3042502

<https://www.phoenixcontact.com/in/products/3042502>

Approvals



EAC

Approval ID: RU C-DE.BL08.B.00511



cULus Recognized

Approval ID: E60425

	Nominal Voltage U_N	Nominal Current I_N	Cross Section AWG	Cross Section mm^2
Use group B				
	600 V	30 A	28 - 10	-
Use group C				
	600 V	30 A	28 - 10	-

SC 4/ 7 - COMBI receptacle



3042502

<https://www.phoenixcontact.com/in/products/3042502>

Classifications

ECLASS

ECLASS-11.0	27141151
ECLASS-12.0	27141151
ECLASS-13.0	27250306

ETIM

ETIM 8.0	EC002021
----------	----------

UNSPSC

UNSPSC 21.0	39121400
-------------	----------

SC 4/ 7 - COMBI receptacle

3042502

<https://www.phoenixcontact.com/in/products/3042502>



Environmental Product Compliance

China RoHS	Environmentally friendly use period: unlimited = EFUP-e
	No hazardous substances above threshold values

SC 4/ 7 - COMBI receptacle

3042502

<https://www.phoenixcontact.com/in/products/3042502>



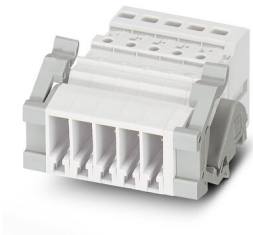
Accessories

SSL 2,5 - Panel feed-through

3043815

<https://www.phoenixcontact.com/in/products/3043815>

Panel feed-through, width: 5.2 mm, color: gray



CZ/2 - Strain relief

3043831

<https://www.phoenixcontact.com/in/products/3043831>

Strain relief, length: 28.9 mm, width: 19.8 mm, number of positions: 2, color: black



SC 4/ 7 - COMBI receptacle

3042502

<https://www.phoenixcontact.com/in/products/3042502>



SZF 1-0,6X3,5 - Screwdriver

1204517

<https://www.phoenixcontact.com/in/products/1204517>



Actuation tool, for ST terminal blocks, also suitable for use as a bladed screwdriver, size: 0.6 x 3.5 x 100 mm, 2-component grip, with non-slip grip

ST-BW - Actuation tool

1207608

<https://www.phoenixcontact.com/in/products/1207608>



Actuation tool, for all 2.5 mm² - 4.0 mm² spring-cages

SC 4/ 7 - COMBI receptacle

3042502

<https://www.phoenixcontact.com/in/products/3042502>



PC - Coding star

3040588

<https://www.phoenixcontact.com/in/products/3040588>

Coding star, length: 3 mm, width: 3 mm, height: 6 mm, color: red



MPS-MT - Test plugs

0201744

<https://www.phoenixcontact.com/in/products/0201744>

Test plugs, with solder connection up to 1 mm² conductor cross section, number of positions: 1, fuse type: , mounting type: , , color: gray



SC 4/ 7 - COMBI receptacle

3042502

<https://www.phoenixcontact.com/in/products/3042502>



MPS-IH WH - Insulating sleeve

0201663

<https://www.phoenixcontact.com/in/products/0201663>

Insulating sleeve, fuse type: , mounting type: , , color: white



MPS-IH RD - Insulating sleeve

0201676

<https://www.phoenixcontact.com/in/products/0201676>

Insulating sleeve, fuse type: , mounting type: , , color: red



SC 4/ 7 - COMBI receptacle

3042502

<https://www.phoenixcontact.com/in/products/3042502>



MPS-IH BU - Insulating sleeve

0201689

<https://www.phoenixcontact.com/in/products/0201689>

Insulating sleeve, fuse type: , mounting type: , , color: blue



MPS-IH YE - Insulating sleeve

0201692

<https://www.phoenixcontact.com/in/products/0201692>

Insulating sleeve, fuse type: , mounting type: , , color: yellow



SC 4/ 7 - COMBI receptacle

3042502

<https://www.phoenixcontact.com/in/products/3042502>



MPS-IH GN - Insulating sleeve

0201702

<https://www.phoenixcontact.com/in/products/0201702>

Insulating sleeve, fuse type: , mounting type: , , color: green



MPS-IH GY - Insulating sleeve

0201728

<https://www.phoenixcontact.com/in/products/0201728>

Insulating sleeve, fuse type: , mounting type: , , color: gray



SC 4/ 7 - COMBI receptacle

3042502

<https://www.phoenixcontact.com/in/products/3042502>



MPS-IH BK - Insulating sleeve

0201731

<https://www.phoenixcontact.com/in/products/0201731>

Insulating sleeve, fuse type: , mounting type: , , color: black



ISH 4/0,5 - Insulating sleeve

3002885

<https://www.phoenixcontact.com/in/products/3002885>

Insulating sleeve, color: gray



SC 4/ 7 - COMBI receptacle

3042502

<https://www.phoenixcontact.com/in/products/3042502>



ISH 4/1,0 - Insulating sleeve

3002898

<https://www.phoenixcontact.com/in/products/3002898>



Insulating sleeve, color: black

Phoenix Contact 2023 © - all rights reserved

<https://www.phoenixcontact.com>

PHOENIX CONTACT (I) Pvt. Ltd.

A-58/2, Okhla Industrial Area, Phase - II, New Delhi-110 020

+91.1275.71420

info@phoenixcontact.co.in