

# PR2-RSC3-LDP-24DC/2X21 - Relay Module



2834643

<https://www.phoenixcontact.com/in/products/2834643>

Please be informed that the data shown in this PDF document is generated from our Online Catalog. Please find the complete data in the user documentation. Our General Terms of Use for Downloads are valid.



Pre-assembled relay modules with screw connection, consisting of: relay base, industrial relay with integrated LED, freewheeling diode and engage/disengage manual actuate lever, and retaining bracket. Input voltage: 24 V DC, 2 changeover contacts, 10 A

## Your advantages

- With DC types, freewheeling diode is integrated in relay
- Relay with detectable manual operation and status LED
- Logical contact arrangement thanks to 1/3-level relay base
- Mechanical switch position indicator
- 4-changeover contact types with multi-layer gold contacts

## Commercial Data

Item number	2834643
Packing unit	5 pc
Minimum order quantity	5 pc
Note	Made to Order (non-returnable)
Sales Key	CK6
Product Key	CK631A
Catalog Page	Page 396 (C-7-2015)
GTIN	4046356044530
Weight per Piece (including packing)	120.57 g
Weight per Piece (excluding packing)	120.57 g
Customs tariff number	85364900
Country of origin	JP

# PR2-RSC3-LDP-24DC/2X21 - Relay Module



2834643

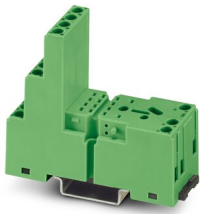
<https://www.phoenixcontact.com/in/products/2834643>

## Set consists of

### PR2-BSC3/4X21 - Relay base

2833576

<https://www.phoenixcontact.com/in/products/2833576>



Relay base PR2-B, for industrial relay REL-IR with 2 or 4 changeover contacts, 1/3-level design, screw connection, plug-in option for input/interference suppression modules, for mounting on NS 35/7,5

---

### REL-IR/LDP- 24DC/2X21 - Single relay

2834025

<https://www.phoenixcontact.com/in/products/2834025>



Plug-in industrial relay with power contacts, 2 changeover contacts, test button, status LED, freewheeling diode, mechanical switching position indicator, polarity **A1+**, **A2-**, input voltage 24 V DC

# PR2-RSC3-LDP-24DC/2X21 - Relay Module



2834643

<https://www.phoenixcontact.com/in/products/2834643>

## EL2-P35 - Retaining bracket

2833592

<https://www.phoenixcontact.com/in/products/2833592>



Relay retaining bracket, with eject function and integrated equipment marking area (8 x 25 mm), to suit relay base PR2, for 35 mm high industrial relay

---

## MP 2 - Marker labels

2833644

<https://www.phoenixcontact.com/in/products/2833644>

Equipment marker, labeling surface 9 x 25 mm



# PR2-RSC3-LDP-24DC/2X21 - Relay Module



2834643

<https://www.phoenixcontact.com/in/products/2834643>

## Technical Data

### Product properties

Product type	Relay Module
Application	Universal
Operating mode	100% operating factor
Mechanical service life	5x 10 <sup>7</sup> cycles

### Insulation characteristics

Overvoltage category	II
Pollution degree	3

### Electrical properties

Service life electrical	see diagram
Maximum power dissipation for nominal condition	0.91 W
Test voltage (Winding/contact)	2 kV AC (50 Hz, 1 min., winding/contact)
Test voltage (Contact/contact)	2 kV AC (50 Hz, 1 min., contact/contact)

### Input data

#### Coil side

Nominal input voltage $U_N$	24 V DC
Input voltage range	18.7 V DC ... 36 V DC
Input voltage range in reference to $U_N$	see diagram
Typical input current at $U_N$	38 mA
Typical response time	13 ms
Typical release time	14 ms
Protective circuit	Freewheeling diode
Operating voltage display	Green LED

### Output data

#### Switching

Contact type	2 changeover contacts
Type of switch contact	Single contact
Drive and function	monostable
Contact material	Ag
Maximum switching voltage	250 V AC/DC
Minimum switching voltage	5 V
Limiting continuous current	10 A
Maximum inrush current	20 A (15 ms)
Min. switching current	1 mA
Interrupting rating (ohmic load) max.	2500 VA (for 250 V AC) 240 W (at 24 V DC) 144 W (at 48 V DC)

# PR2-RSC3-LDP-24DC/2X21 - Relay Module



2834643

<https://www.phoenixcontact.com/in/products/2834643>

	108 W (at 60 V DC)
	72 W (at 110 V DC)
	110 W (at 220 V DC)

## Connection data

### Coil side

Connection method	Screw connection
Stripping length	7 mm
Screw thread	M3
Conductor cross section rigid	0.14 mm <sup>2</sup> ... 2.5 mm <sup>2</sup>
Conductor cross section flexible	0.14 mm <sup>2</sup> ... 2.5 mm <sup>2</sup>
Conductor cross section AWG	26 ... 14

### Contact side

Connection method	Screw connection
Stripping length	7 mm
Screw thread	M3
Conductor cross section rigid	0.14 mm <sup>2</sup> ... 2.5 mm <sup>2</sup>
Conductor cross section flexible	0.14 mm <sup>2</sup> ... 2.5 mm <sup>2</sup>
Conductor cross section AWG	26 ... 14

## Dimensions

Width	27 mm
Height	78.5 mm
Depth	86 mm

## Environmental and real-life conditions

### Ambient conditions

Degree of protection (Relay)	RT I (Relay)
Ambient temperature (operation)	-25 °C ... 60 °C
Ambient temperature (storage/transport)	-25 °C ... 70 °C

## Standards and regulations

Standards/regulations	IEC 60664
	EN 50178

## Mounting

Mounting type	DIN rail mounting
Assembly instructions	in rows with zero spacing
Mounting position	any

# PR2-RSC3-LDP-24DC/2X21 - Relay Module

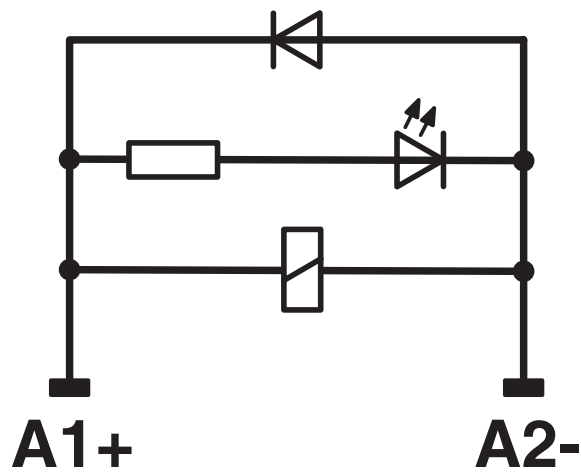
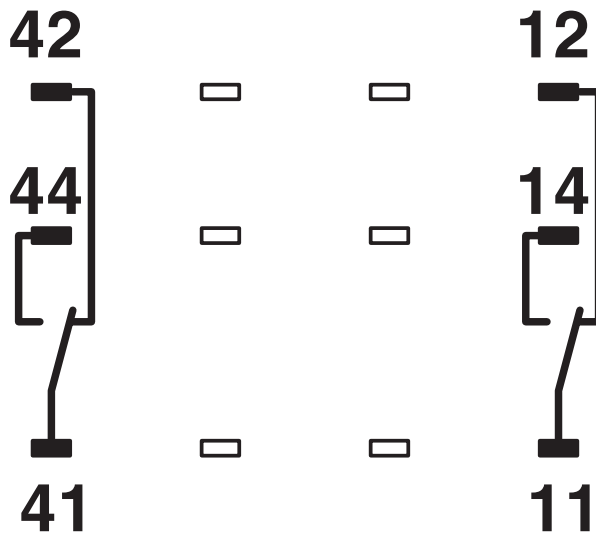
2834643

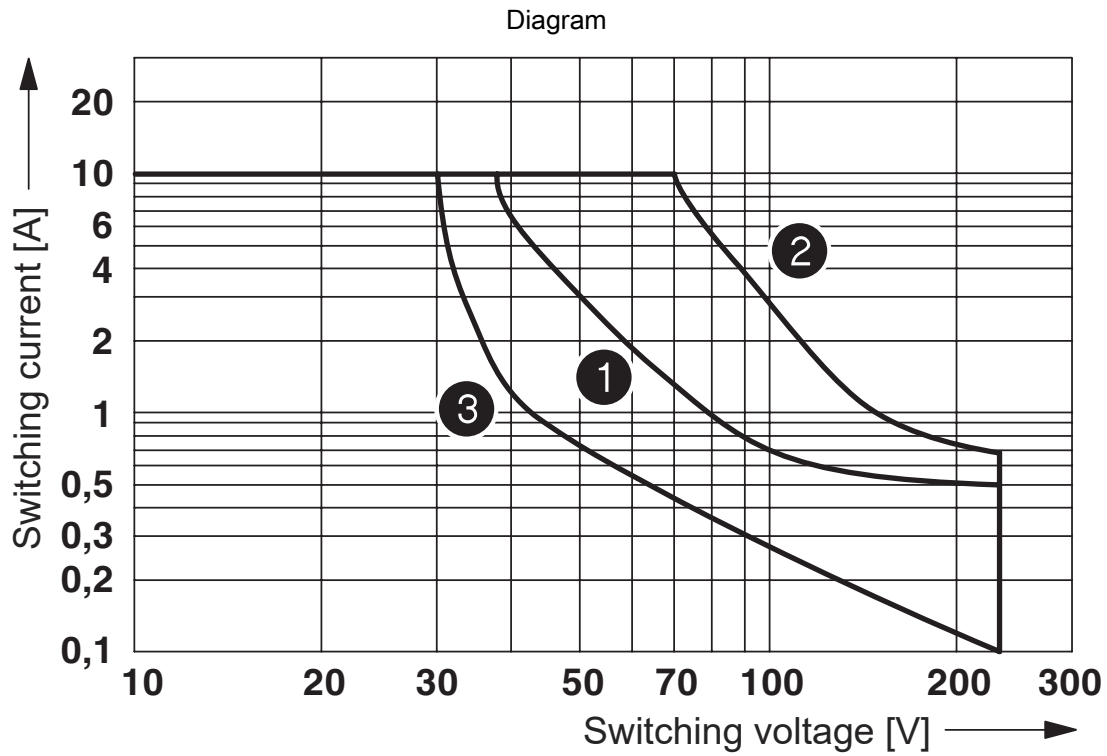
<https://www.phoenixcontact.com/in/products/2834643>



## Drawings

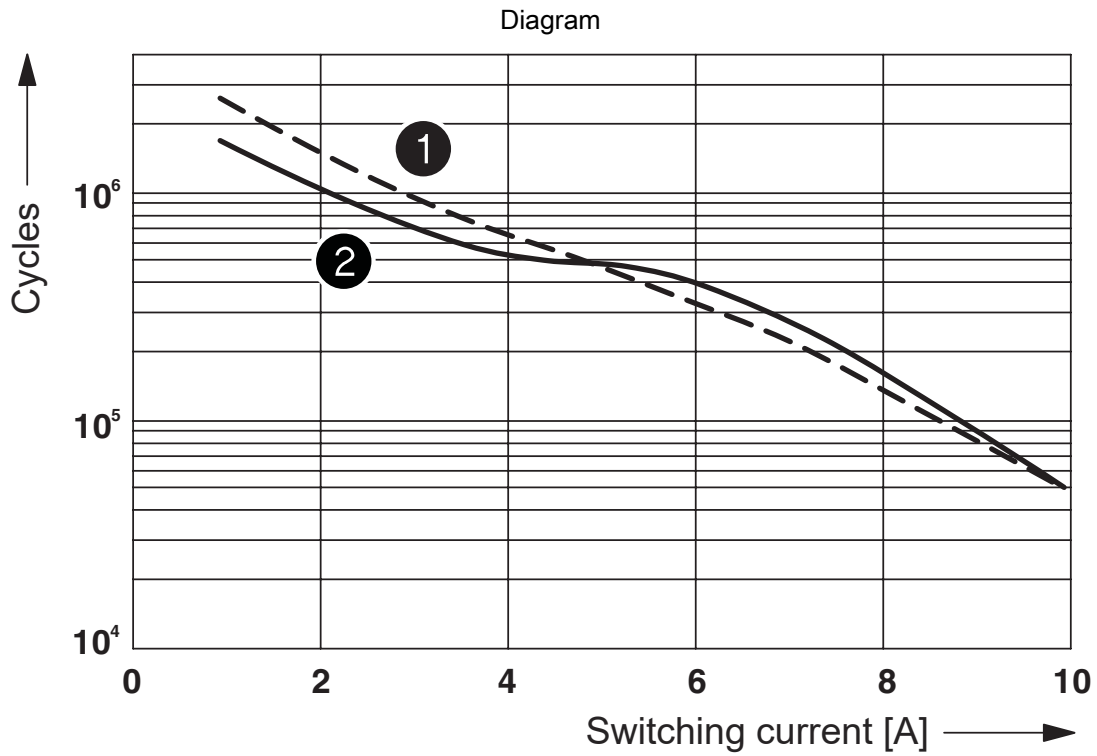
Circuit diagram





- ① Ohmic load
- ② ohmic load, contacts in series
- ③  $L/R < 7$  ms

DC interrupting rating



- ① 250 V AC, ohmic load
- ② 30 V DC, ohmic load

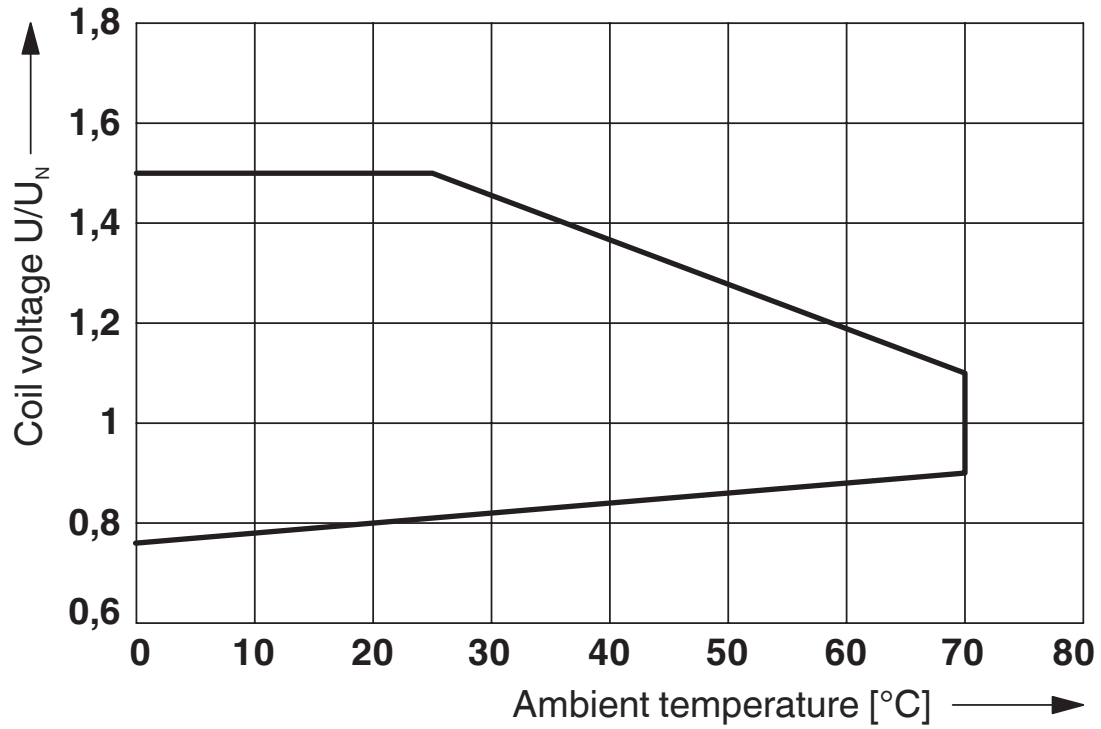
Electrical service life



2834643

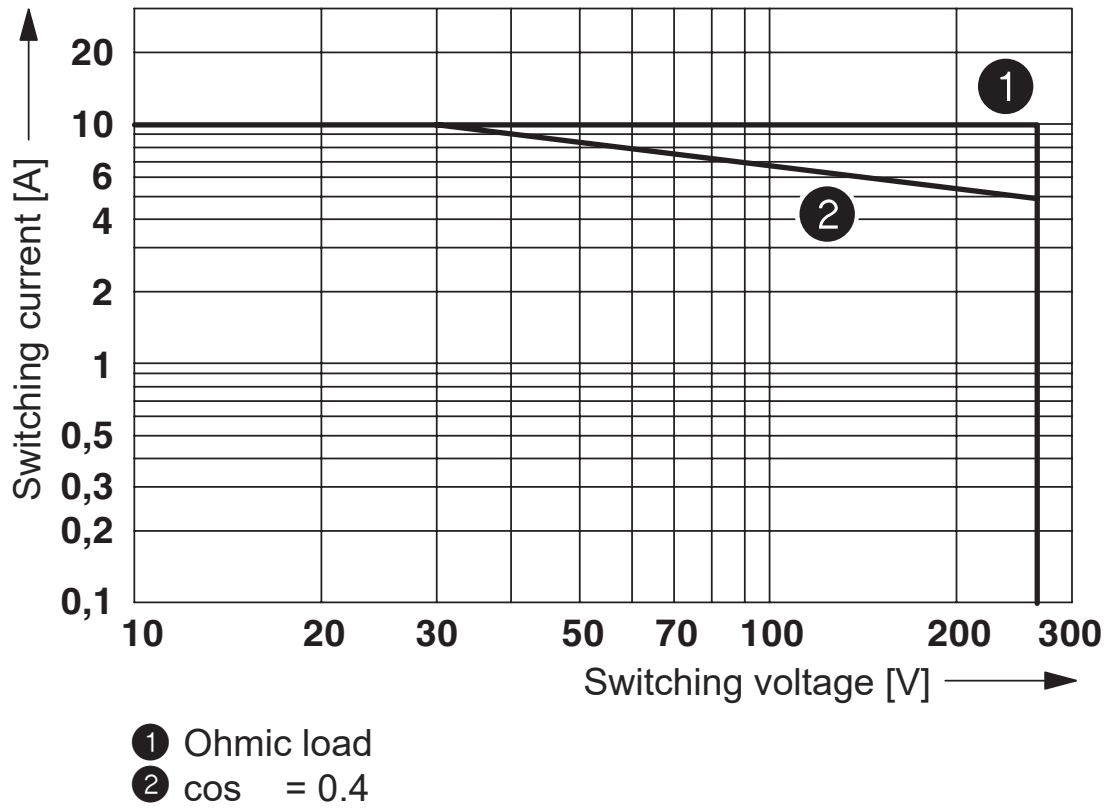
<https://www.phoenixcontact.com/in/products/2834643>

Diagram



Operating voltage range of relay  $T_u=T_{coil}$

Diagram



AC interrupting rating

# PR2-RSC3-LDP-24DC/2X21 - Relay Module



2834643

<https://www.phoenixcontact.com/in/products/2834643>

## Classifications

### ECLASS

ECLASS-11.0

27371601

### ETIM

ETIM 7.0

EC001437

### UNSPSC

UNSPSC 21.0

39122334

# PR2-RSC3-LDP-24DC/2X21 - Relay Module



2834643

<https://www.phoenixcontact.com/in/products/2834643>

## Environmental Product Compliance

China RoHS	Environmentally friendly use period: unlimited = EFUP-e
	No hazardous substances above threshold values

Phoenix Contact 2023 © - all rights reserved  
<https://www.phoenixcontact.com>

PHOENIX CONTACT (I) Pvt. Ltd.  
A-58/2, Okhla Industrial Area, Phase - II, New Delhi-110 020

+91.1275.71420  
[info@phoenixcontact.co.in](mailto:info@phoenixcontact.co.in)