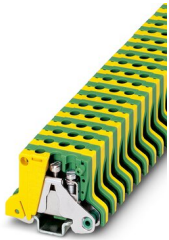


# MSLKG 2,5 - Ground terminal

0452027

<https://www.phoenixcontact.com/in/products/0452027>

Please be informed that the data shown in this PDF document is generated from our Online Catalog. Please find the complete data in the user documentation. Our General Terms of Use for Downloads are valid.



Ground terminal, When aligned with a feed-through terminal block of the same shape, a partition plate must be used for insulation voltages > 250 V, number of connections: 2, connection method: Screw connection, 1 level, cross section: 0.2 mm<sup>2</sup> - 4 mm<sup>2</sup>, mounting: PE foot with mounting screw, M2.5, mounting type: NS 15, color: green-yellow

## Commercial Data

Item number	0452027
Packing unit	50 pc
Minimum order quantity	50 pc
Sales Key	BE1
Product Key	BE1261
Catalog Page	Page 523 (CL1-2011)
GTIN	4017918002374
Weight per Piece (including packing)	9.35 g
Weight per Piece (excluding packing)	9.35 g
Customs tariff number	85369010
Country of origin	PL

# MSLKG 2,5 - Ground terminal

0452027

<https://www.phoenixcontact.com/in/products/0452027>

## Technical Data

### Notes

General	When aligned with a feed-through terminal block of the same shape, a partition plate must be used for insulation voltages > 250 V
---------	---

### Product properties

Product type	Ground terminal block
Number of connections	2
Number of rows	1

### Insulation characteristics

Overvoltage category	III
Degree of pollution	3

### Electrical properties

Rated surge voltage	6 kV
Maximum power dissipation for nominal condition	0.77 W

### Connection data

Grounding foot	Yes
Number of connections per level	2
Nominal cross section	2.5 mm <sup>2</sup>

### 1 level

Screw thread	M3
Note	Please observe the current carrying capacity of the DIN rails.
Tightening torque	0.6 ... 0.8 Nm
Stripping length	8 mm
Internal cylindrical gage	A3
Connection in acc. with standard	IEC 60947-7-2
Conductor cross section rigid	0.2 mm <sup>2</sup> ... 4 mm <sup>2</sup>
Cross section AWG	24 ... 12 (converted acc. to IEC)
Conductor cross section flexible	0.2 mm <sup>2</sup> ... 2.5 mm <sup>2</sup>
Conductor cross section, flexible [AWG]	24 ... 14 (converted acc. to IEC)
Conductor cross-section flexible (ferrule without plastic sleeve)	0.25 mm <sup>2</sup> ... 2.5 mm <sup>2</sup>
Flexible conductor cross section (ferrule with plastic sleeve)	0.25 mm <sup>2</sup> ... 1.5 mm <sup>2</sup>

### Dimensions

Width	7.5 mm
Height NS 15	26.5 mm
Height	1.043 "
Length	35 mm

# MSLKG 2,5 - Ground terminal



0452027

<https://www.phoenixcontact.com/in/products/0452027>

## Material specifications

Color	green-yellow
Flammability rating according to UL 94	V2
Insulating material group	I
Insulating material	PA
Static insulating material application in cold	-40 °C
Temperature index of insulation material (DIN EN 60216-1 (VDE 0304-21))	125 °C
Relative insulation material temperature index (Elec., UL 746 B)	125 °C

## Mechanical properties

### General

Terminal block mounting	0.5 Nm ... 0.6 Nm (PE foot with mounting screw, M2.5)
-------------------------	---

### Mechanical data

Open side panel	No
-----------------	----

## Environmental and real-life conditions

### Ambient conditions

Ambient temperature (operation)	-60 °C ... 105 °C (max. short-term operating temperature RTI Elec.)
Ambient temperature (storage/transport)	-25 °C ... 60 °C (for a short time, not exceeding 24 h, -60 °C to +70 °C)
Ambient temperature (assembly)	-5 °C ... 70 °C
Ambient temperature (actuation)	-5 °C ... 70 °C
Permissible humidity (storage/transport)	30 % ... 70 %

## Standards and regulations

Connection in acc. with standard	IEC 60947-7-2
----------------------------------	---------------

## Mounting

Mounting type	NS 15
Terminal block mounting	0.5 Nm ... 0.6 Nm (PE foot with mounting screw, M2.5)

# MSLKG 2,5 - Ground terminal

0452027

<https://www.phoenixcontact.com/in/products/0452027>



## Drawings

Circuit diagram



# MSLKG 2,5 - Ground terminal





0452027

<https://www.phoenixcontact.com/in/products/0452027>

## Approvals

 <b>CSA</b> Approval ID: 13631				
	Nominal Voltage $U_N$	Nominal Current $I_N$	Cross Section AWG	Cross Section $\text{mm}^2$
	-	-	28 - 12	-

 <b>UL Recognized</b> Approval ID: E60425				
	Nominal Voltage $U_N$	Nominal Current $I_N$	Cross Section AWG	Cross Section $\text{mm}^2$
	-	-	28 - 12	-
	-	-	28 - 12	-

 <b>LR</b> Approval ID: LR2041789TA-02				
--	--	--	--	--

 <b>ATEX</b> Approval ID: KEMA 03ATEX2381U				
--	--	--	--	--

 <b>EAC Ex</b> Approval ID: RU C-DE.HA91.B.00066				
--	--	--	--	--

 <b>IECEx</b> Approval ID: IECEx KEM 07.0017U				
---	--	--	--	--

 <b>CCC</b> Approval ID: 2020322313000629				
---	--	--	--	--

 <b>NEPSI</b> Approval ID: GYJ20.1196U				
--	--	--	--	--

# MSLKG 2,5 - Ground terminal



0452027

<https://www.phoenixcontact.com/in/products/0452027>

## Classifications

### ECLASS

ECLASS-11.0

27141141

### ETIM

ETIM 8.0

EC000901

### UNSPSC

UNSPSC 21.0

39121400

# MSLKG 2,5 - Ground terminal



0452027

<https://www.phoenixcontact.com/in/products/0452027>

## Environmental Product Compliance

REACH SVHC	4-Nonylphenol, branched and linear
China RoHS	Environmentally friendly use period: unlimited = EFUP-e
	No hazardous substances above threshold values

# MSLKG 2,5 - Ground terminal

0452027

<https://www.phoenixcontact.com/in/products/0452027>



## Accessories

### BN-ZB 7,5/WH CUS - Marker pin Zack strip

0824278

<https://www.phoenixcontact.com/in/products/0824278>



Marker pin Zack strip, can be ordered: Strip, white, labeled according to customer specifications, mounting type: plug in, for terminal block width: 7.5 mm, lettering field size: 6 x 4 mm

---

### ATP-MBK - Partition plate

1413227

<https://www.phoenixcontact.com/in/products/1413227>



Partition plate, length: 42.5 mm, width: 2.5 mm, height: 30.5 mm, color: gray



# MSLKG 2,5 - Ground terminal

0452027

<https://www.phoenixcontact.com/in/products/0452027>



## SF-SL 0,6X3,5-100 S-VDE - Screwdriver

1212587

<https://www.phoenixcontact.com/in/products/1212587>



Actuation tool, for ST terminal blocks, VDE insulated, with slimmer insulation integrated in the blade, also suitable for use as a bladed screwdriver, size: 0.6 x 3.5 x 100 mm, 2-component grip, with non-slip grip

---

## NS 15 UNPERF 2000MM VPE 10 - DIN rail, unperforated

1401695

<https://www.phoenixcontact.com/in/products/1401695>



DIN rail, unperforated, acc. to EN 60715, material: Steel, galvanized, passivated with a thick layer, Standard profile, color: silver, Pack of 10 (20 m)

# MSLKG 2,5 - Ground terminal

0452027

<https://www.phoenixcontact.com/in/products/0452027>



## NS 15 PERF 2000MM VPE 10 - DIN rail perforated

1401682

<https://www.phoenixcontact.com/in/products/1401682>



DIN rail perforated, acc. to EN 60715, material: Steel, galvanized, passivated with a thick layer, Standard profile, color: silver, Pack of 10 (20 m)

---

## NS 15 AL PERF 2000MM VPE 10 - DIN rail perforated

1401763

<https://www.phoenixcontact.com/in/products/1401763>



DIN rail perforated, acc. to EN 60715, material: Aluminum, uncoated, Standard profile, color: silver, Pack of 10 (20 m)

# MSLKG 2,5 - Ground terminal

0452027

<https://www.phoenixcontact.com/in/products/0452027>



## NS 15 WH PERF 2000MM-VPE 10 - DIN rail perforated

1204096

<https://www.phoenixcontact.com/in/products/1204096>



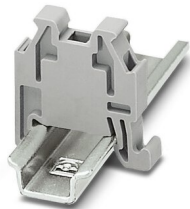
DIN rail perforated, acc. to EN 60715, material: Steel, Galvanized, white passivated, Standard profile, color: silver, Pack of 10 (20 m)

---

## CLIPFIX 15 - End clamp

3022263

<https://www.phoenixcontact.com/in/products/3022263>



Snap-on end bracket, to be snapped onto NS 15 DIN rail

---

Phoenix Contact 2023 © - all rights reserved  
<https://www.phoenixcontact.com>

PHOENIX CONTACT (I) Pvt. Ltd.  
A-58/2, Okhla Industrial Area, Phase - II, New Delhi-110 020

+91.1275.71420  
[info@phoenixcontact.co.in](mailto:info@phoenixcontact.co.in)