

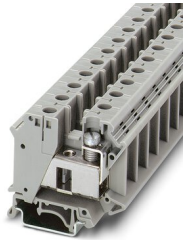
UIK 35 - Installation terminal block



3006182

<https://www.phoenixcontact.com/in/products/3006182>

Please be informed that the data shown in this PDF document is generated from our Online Catalog. Please find the complete data in the user documentation. Our General Terms of Use for Downloads are valid.



Installation terminal block, nom. voltage: 800 V, nominal current: 125 A, Screw connection, Rated cross section: 35 mm², cross section: 0.75 mm² - 35 mm², mounting type: NS 35/7,5, NS 35/15, NS 32, color: gray

Your advantages

- Installation terminal blocks with a particularly low-profile design for use in flat distributors
- The asymmetrical arrangement of the terminal blocks on the DIN rail enables the neutral busbar to be routed past the terminal blocks

Commercial Data

Item number	3006182
Packing unit	50 pc
Minimum order quantity	50 pc
Sales Key	BE1
Product Key	BE1251
Catalog Page	Page 505 (C-1-2017)
GTIN	4017918091408
Weight per Piece (including packing)	46.45 g
Weight per Piece (excluding packing)	44.222 g
Customs tariff number	85369010
Country of origin	IN

UIK 35 - Installation terminal block



3006182

<https://www.phoenixcontact.com/in/products/3006182>

Technical Data

Product properties

Product type	Installation terminal block
Number of connections	2
Number of rows	1
Potentials	1

Insulation characteristics

Overvoltage category	III
Degree of pollution	3

Electrical properties

Rated surge voltage	8 kV
Maximum power dissipation for nominal condition	4.06 W

Connection data

Number of connections per level	2
Nominal cross section	35 mm ²

Level 1 above 1 below 1

Screw thread	M6
Tightening torque	3.2 ... 3.7 Nm
Stripping length	16 mm
Connection in acc. with standard	IEC 60947-7-1
Conductor cross section rigid	0.75 mm ² ... 35 mm ²
Cross section AWG	18 ... 2 (converted acc. to IEC)
Conductor cross section flexible	0.75 mm ² ... 35 mm ²
Conductor cross section, flexible [AWG]	18 ... 2 (converted acc. to IEC)
Conductor cross-section flexible (ferrule without plastic sleeve)	0.75 mm ² ... 35 mm ²
Flexible conductor cross section (ferrule with plastic sleeve)	0.75 mm ² ... 35 mm ²
Cross-section with insertion bridge, rigid	35 mm ²
Cross-section with insertion bridge, flexible	35 mm ²
2 conductors with same cross section, solid	0.75 mm ² ... 10 mm ²
2 conductors with same cross section, flexible	0.75 mm ² ... 10 mm ²
2 conductors with same cross section, flexible, with ferrule without plastic sleeve	0.75 mm ² ... 10 mm ²
2 conductors with the same cross section, flexible, with TWIN ferrule with plastic sleeve	0.75 mm ² ... 6 mm ²
Nominal current	125 A
Maximum load current	125 A (with 35 mm ² conductor cross section)
Nominal voltage	800 V
Nominal cross section	35 mm ²

Dimensions

UIK 35 - Installation terminal block



3006182

<https://www.phoenixcontact.com/in/products/3006182>

Width	15.2 mm
Height NS 35/15	58.5 mm
Height NS 35/7,5	51 mm
Height	2.008 "
Height NS 32	56 mm
Length	55 mm

Material specifications

Color	gray
Flammability rating according to UL 94	V0
Insulating material group	I
Insulating material	PA
Static insulating material application in cold	-60 °C
Temperature index of insulation material (DIN EN 60216-1 (VDE 0304-21))	130 °C
Relative insulation material temperature index (Elec., UL 746 B)	130 °C
Fire protection for rail vehicles (DIN EN 45545-2) R22	HL 1 - HL 3
Fire protection for rail vehicles (DIN EN 45545-2) R23	HL 1 - HL 3
Fire protection for rail vehicles (DIN EN 45545-2) R24	HL 1 - HL 3
Fire protection for rail vehicles (DIN EN 45545-2) R26	HL 1 - HL 3
Calorimetric heat release NFPA 130 (ASTM E 1354)	28 MJ/kg
Surface flammability NFPA 130 (ASTM E 162)	passed
Specific optical density of smoke NFPA 130 (ASTM E 662)	passed
Smoke gas toxicity NFPA 130 (SMP 800C)	passed

Electrical tests

Temperature-rise test

Requirement temperature-rise test	Increase in temperature ≤ 45 K
Result	Test passed
Short-time withstand current 35 mm ²	4.2 kA
Result	Test passed

Mechanical properties

Mechanical data

Open side panel	No
-----------------	----

Mechanical tests

Attachment on the carrier

DIN rail/fixing support	NS 32/NS 35
Test force setpoint	10 N
Result	Test passed

Environmental and real-life conditions

UIK 35 - Installation terminal block



3006182

<https://www.phoenixcontact.com/in/products/3006182>

Needle-flame test

Time of exposure	30 s
Result	Test passed

Ambient conditions

Ambient temperature (operation)	-60 °C ... 105 °C (max. short-term operating temperature RTI Elec.)
Ambient temperature (storage/transport)	-25 °C ... 60 °C (for a short time, not exceeding 24 h, -60 °C to +70 °C)
Ambient temperature (assembly)	-5 °C ... 70 °C
Permissible humidity (storage/transport)	30 % ... 70 %

Standards and regulations

Connection in acc. with standard	IEC 60947-7-1
----------------------------------	---------------

Mounting

Mounting type	NS 35/7,5
	NS 35/15
	NS 32

UIK 35 - Installation terminal block



3006182

<https://www.phoenixcontact.com/in/products/3006182>

Drawings

Circuit diagram

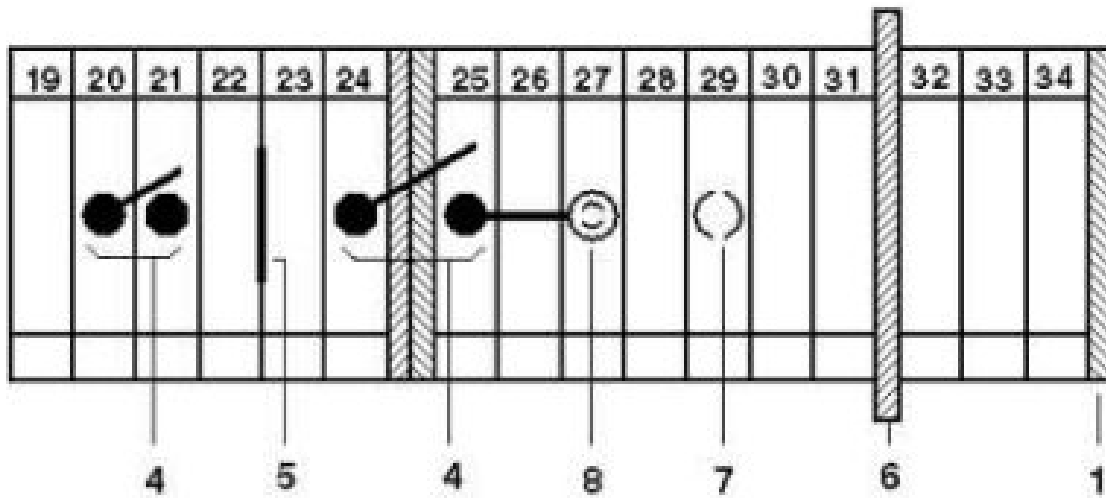
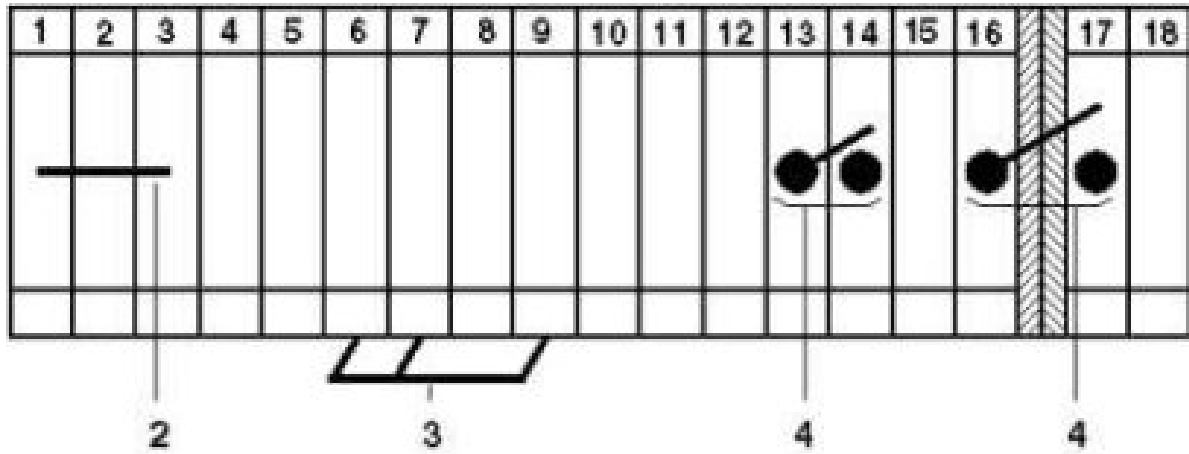


UIK 35 - Installation terminal block

3006182

<https://www.phoenixcontact.com/in/products/3006182>

Circuit diagram




UIK 35 - Installation terminal block





3006182

<https://www.phoenixcontact.com/in/products/3006182>

Approvals

 CSA Approval ID: 158887				
	Nominal Voltage U_N	Nominal Current I_N	Cross Section AWG	Cross Section mm^2
	600 V	115 A	18 - 2	-
	600 V	115 A	18 - 2	-

 EAC Approval ID: RU C-DE.BL08.B.00534				
---	--	--	--	--

 cULus Recognized Approval ID: E60425				
	Nominal Voltage U_N	Nominal Current I_N	Cross Section AWG	Cross Section mm^2
	600 V	115 A	18 - 2	-
	600 V	115 A	18 - 2	-
	600 V	115 A	18 - 2	-

UIK 35 - Installation terminal block



3006182

<https://www.phoenixcontact.com/in/products/3006182>

Classifications

ECLASS

ECLASS-11.0	27141125
ECLASS-12.0	27141125
ECLASS-13.0	27250110

ETIM

ETIM 8.0	EC001329
----------	----------

UNSPSC

UNSPSC 21.0	39121400
-------------	----------

UIK 35 - Installation terminal block



3006182

<https://www.phoenixcontact.com/in/products/3006182>

Environmental Product Compliance


China RoHS	Environmentally friendly use period: unlimited = EFUP-e
	No hazardous substances above threshold values

UIK 35 - Installation terminal block

3006182

<https://www.phoenixcontact.com/in/products/3006182>

Accessories

 Note: Applying some accessories below might limit this product.


FBI 2-15 - Fixed bridge

0201333

<https://www.phoenixcontact.com/in/products/0201333>



Fixed bridge, pitch: 15 mm, number of positions: 2, color: silver

 Max. current carrying capacity: 135 A


FBI 3-15 - Fixed bridge

0201278

<https://www.phoenixcontact.com/in/products/0201278>



Fixed bridge, pitch: 15 mm, number of positions: 3, color: silver

 Max. current carrying capacity: 135 A

UIK 35 - Installation terminal block

3006182

<https://www.phoenixcontact.com/in/products/3006182>



FBI 5-15 - Fixed bridge

0711302

<https://www.phoenixcontact.com/in/products/0711302>



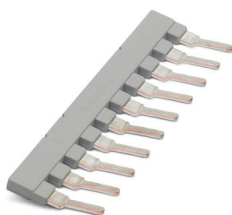
Fixed bridge, pitch: 15 mm, number of positions: 5, color: silver

 Max. current carrying capacity: 135 A

EB 10-15 - Insertion bridge

0205135

<https://www.phoenixcontact.com/in/products/0205135>



Insertion bridge, pitch: 15.25 mm, number of positions: 10, color: gray

UIK 35 - Installation terminal block

3006182

<https://www.phoenixcontact.com/in/products/3006182>


EB 2-15 K/UK 35 - Insertion bridge

0205119

<https://www.phoenixcontact.com/in/products/0205119>

Insertion bridge, pitch: 15 mm, number of positions: 2, color: gray



 Max. current carrying capacity: 101 A


EB 3-15 K/UK 35 - Insertion bridge

0205106

<https://www.phoenixcontact.com/in/products/0205106>

Insertion bridge, pitch: 15 mm, number of positions: 3, color: gray



 Max. current carrying capacity: 101 A

UIK 35 - Installation terminal block

3006182

<https://www.phoenixcontact.com/in/products/3006182>



EB 10-15 K/UK 35 - Insertion bridge

0205096

<https://www.phoenixcontact.com/in/products/0205096>



Insertion bridge, pitch: 15 mm, number of positions: 10, color: gray

 Max. current carrying capacity: 101 A

SBH 2-15 - Switching jumper

0205232

<https://www.phoenixcontact.com/in/products/0205232>



Switching jumper, pitch: 15 mm, number of positions: 2, color: silver

 Max. current carrying capacity: 120 A

UIK 35 - Installation terminal block

3006182

<https://www.phoenixcontact.com/in/products/3006182>

WS 5-15 - Warning label

1004445

<https://www.phoenixcontact.com/in/products/1004445>

Warning label, Plate, orange, labeled: Lightning flash and warning in English, mounting type: plug in, for terminal block width: 15 mm, diameter: 0 mm



WS 4-15 - Warning label

1004241

<https://www.phoenixcontact.com/in/products/1004241>

Warning label, Plate, orange, labeled: Lightning flash and warning in English, mounting type: plug in, for terminal block width: 15 mm, diameter: 0 mm



UIK 35 - Installation terminal block

3006182

<https://www.phoenixcontact.com/in/products/3006182>

TS-K - Separating plate

1302215

<https://www.phoenixcontact.com/in/products/1302215>

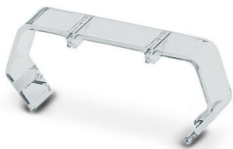


Separating plate, length: 22 mm, width: 0.5 mm, height: 22 mm, color: gray

EA 11 - Cover

1024263

<https://www.phoenixcontact.com/in/products/1024263>



Single cover, for covering one terminal block, snap fit, cannot be labeled, color: transparent

UIK 35 - Installation terminal block

3006182

<https://www.phoenixcontact.com/in/products/3006182>



NLS-CU 3/10 SN 1000MM - Neutral busbar

0402174

<https://www.phoenixcontact.com/in/products/0402174>



Neutral busbar, DIN VDE 0611-4: 1991-02, material: Copper, tin-plated, color: silver

AP-NLS N - Cover profile

1013634

<https://www.phoenixcontact.com/in/products/1013634>



Cover profile, length: 300 mm, color: transparent

UIK 35 - Installation terminal block

3006182

<https://www.phoenixcontact.com/in/products/3006182>

SZS 1,0X4,0 VDE - Screwdriver

1205066

<https://www.phoenixcontact.com/in/products/1205066>



Screwdriver, slot-headed, VDE insulated, size: 1.0 x 4.0 x 100 mm, 2-component grip, with non-slip grip

NS 32 PERF 2000MM-VPE 10 - DIN rail perforated

1201002

<https://www.phoenixcontact.com/in/products/1201002>



DIN rail perforated, acc. to EN 60715, material: Steel, galvanized, passivated with a thick layer, G profile, color: silver, Pack of 10 (20 m)

UIK 35 - Installation terminal block

3006182

<https://www.phoenixcontact.com/in/products/3006182>



NS 32 UNPERF 2000MM-VPE 10 - DIN rail, unperforated

1201015

<https://www.phoenixcontact.com/in/products/1201015>



DIN rail, unperforated, acc. to EN 60715, material: Steel, galvanized, passivated with a thick layer, G profile, color: silver, Pack of 10 (20 m)

NS 35/ 7,5 PERF 2000MM - DIN rail perforated

0801733

<https://www.phoenixcontact.com/in/products/0801733>



DIN rail perforated, acc. to EN 60715, material: Steel, galvanized, passivated with a thick layer, Standard profile, color: silver, Pack of 25 (50 m)

UIK 35 - Installation terminal block

3006182

<https://www.phoenixcontact.com/in/products/3006182>



NS 35/ 7,5 UNPERF 2000MM - DIN rail, unperforated

0801681

<https://www.phoenixcontact.com/in/products/0801681>



DIN rail, unperforated, acc. to EN 60715, material: Steel, galvanized, passivated with a thick layer, Standard profile, color: silver, Pack of 25 (50 m)

NS 35/ 7,5 WH PERF 2000MM - DIN rail perforated

1204119

<https://www.phoenixcontact.com/in/products/1204119>



DIN rail perforated, acc. to EN 60715, material: Steel, Galvanized, white passivated, Standard profile, color: silver, Pack of 25 (50 m)

UIK 35 - Installation terminal block

3006182

<https://www.phoenixcontact.com/in/products/3006182>

NS 35/ 7,5 WH UNPERF 2000MM-VPE 10 - DIN rail, unperforated

1204122

<https://www.phoenixcontact.com/in/products/1204122>



DIN rail, unperforated, acc. to EN 60715, material: Steel, Galvanized, white passivated, Standard profile, color: silver, Pack of 10 (20 m)

NS 35/ 7,5 AL UNPERF 2000MM - DIN rail, unperforated

0801704

<https://www.phoenixcontact.com/in/products/0801704>



DIN rail, unperforated, acc. to EN 60715, material: Aluminum, uncoated, Standard profile, color: silver, Pack of 25 (50 m)

UIK 35 - Installation terminal block

3006182

<https://www.phoenixcontact.com/in/products/3006182>



NS 35/ 7,5 ZN PERF 2000MM - DIN rail perforated

1206421

<https://www.phoenixcontact.com/in/products/1206421>



DIN rail perforated, acc. to EN 60715, material: Steel, galvanized, Standard profile, color: silver, Pack of 25 (50 m)

NS 35/ 7,5 ZN UNPERF 2000MM - DIN rail, unperforated

1206434

<https://www.phoenixcontact.com/in/products/1206434>



DIN rail, unperforated, acc. to EN 60715, material: Steel, galvanized, Standard profile, color: silver, Pack of 25 (50 m)

UIK 35 - Installation terminal block

3006182

<https://www.phoenixcontact.com/in/products/3006182>



NS 35/ 7,5 CU UNPERF 2000MM-VPE 10 - DIN rail, unperforated

0801762

<https://www.phoenixcontact.com/in/products/0801762>



DIN rail, unperforated, acc. to EN 60715, material: Copper, uncoated, Standard profile, color: copper-colored, Pack of 10 (20 m)

NS 35/ 7,5 CAP - End cap

1206560

<https://www.phoenixcontact.com/in/products/1206560>

DIN rail end piece, for DIN rail NS 35/7.5



UIK 35 - Installation terminal block

3006182

<https://www.phoenixcontact.com/in/products/3006182>



NS 35/15 PERF 2000MM - DIN rail perforated

1201730

<https://www.phoenixcontact.com/in/products/1201730>



DIN rail perforated, similar to EN 60715, material: Steel, galvanized, passivated with a thick layer, Standard profile, color: silver, Pack of 25 (50 m)

NS 35/15 UNPERF 2000MM - DIN rail, unperforated

1201714

<https://www.phoenixcontact.com/in/products/1201714>



DIN rail, unperforated, similar to EN 60715, material: Steel, galvanized, passivated with a thick layer, Standard profile, color: silver, Pack of 25 (50 m)

UIK 35 - Installation terminal block

3006182

<https://www.phoenixcontact.com/in/products/3006182>



NS 35/15 WH PERF 2000MM - DIN rail perforated

0806602

<https://www.phoenixcontact.com/in/products/0806602>



DIN rail perforated, similar to EN 60715, material: Steel, Galvanized, white passivated, Standard profile, color: white, Pack of 25 (50 m)

NS 35/15 WH UNPERF 2000MM-VPE 10 - DIN rail, unperforated

1204135

<https://www.phoenixcontact.com/in/products/1204135>



DIN rail, unperforated, similar to EN 60715, material: Steel, Galvanized, white passivated, Standard profile, color: silver, Pack of 10 (20 m)

UIK 35 - Installation terminal block

3006182

<https://www.phoenixcontact.com/in/products/3006182>

NS 35/15 AL UNPERF 2000MM - DIN rail, unperforated

1201756

<https://www.phoenixcontact.com/in/products/1201756>



DIN rail, unperforated, similar to EN 60715, material: Aluminum, uncoated, Standard profile, color: silver

NS 35/15 ZN PERF 2000MM - DIN rail perforated

1206599

<https://www.phoenixcontact.com/in/products/1206599>



DIN rail perforated, similar to EN 60715, material: Steel, galvanized, Standard profile, color: silver, Pack of 25 (50 m)

UIK 35 - Installation terminal block

3006182

<https://www.phoenixcontact.com/in/products/3006182>



NS 35/15 ZN UNPERF 2000MM - DIN rail, unperforated

1206586

<https://www.phoenixcontact.com/in/products/1206586>



DIN rail, unperforated, similar to EN 60715, material: Steel, galvanized, Standard profile, color: silver, Pack of 25 (50 m)

NS 35/15 CU UNPERF 2000MM-VPE 10 - DIN rail, unperforated

1201895

<https://www.phoenixcontact.com/in/products/1201895>



DIN rail, unperforated, similar to EN 60715, material: Copper, uncoated, Standard profile, color: copper-colored, Pack of 10 (20 m)

UIK 35 - Installation terminal block

3006182

<https://www.phoenixcontact.com/in/products/3006182>



NS 35/15 CAP - End cap

1206573

<https://www.phoenixcontact.com/in/products/1206573>

DIN rail end piece, for DIN rail NS 35/15



NS 35/15-2,3 UNPERF 2000MM-VPE 10 - DIN rail, unperforated

1201798

<https://www.phoenixcontact.com/in/products/1201798>



DIN rail, unperforated, acc. to EN 60715, material: Steel, galvanized, passivated with a thick layer, Standard profile 2.3 mm, color: silver, Pack of 10 (20 m)

UIK 35 - Installation terminal block

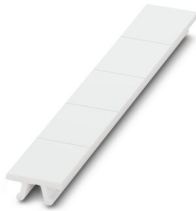
3006182

<https://www.phoenixcontact.com/in/products/3006182>

ZB 15:UNBEDRUCKT - Zack marker strip

0811972

<https://www.phoenixcontact.com/in/products/0811972>

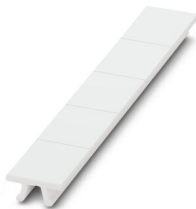


Zack marker strip, Strip, white, unlabeled, can be labeled with: PLOTMARK, CMS-P1-PLOTTER, mounting type: snapped, for terminal block width: 15.2 mm, lettering field size: 10.5 x 15.1 mm, Number of individual labels: 5

ZB 15 CUS - Zack marker strip

0824945

<https://www.phoenixcontact.com/in/products/0824945>



Zack marker strip, can be ordered: Strip, white, labeled according to customer specifications, mounting type: snap into tall marker groove, for terminal block width: 15.2 mm, lettering field size: 10.5 x 15.1 mm, Number of individual labels: 5

UIK 35 - Installation terminal block

3006182

<https://www.phoenixcontact.com/in/products/3006182>



ZB 15,LGS:L1-N,PE - Zack marker strip

0811998

<https://www.phoenixcontact.com/in/products/0811998>



Zack marker strip, Strip, white, labeled, printed horizontally: L1, L2, L3, N, PE, mounting type: snapped, for terminal block width: 15.2 mm, lettering field size: 10.5 x 15.1 mm, Number of individual labels: 5

PS-MT - Test plugs

0311647

<https://www.phoenixcontact.com/in/products/0311647>



Test plugs, number of positions: 1, fuse type: , mounting type: , , color: silver

UIK 35 - Installation terminal block

3006182

<https://www.phoenixcontact.com/in/products/3006182>

PS-IH WH - Insulating sleeve

0311566

<https://www.phoenixcontact.com/in/products/0311566>



Insulating sleeve, number of positions: 1, fuse type: , mounting type: , , color: white

PS-IH RD - Insulating sleeve

0311579

<https://www.phoenixcontact.com/in/products/0311579>



Insulating sleeve, number of positions: 1, fuse type: , mounting type: , , color: red

UIK 35 - Installation terminal block

3006182

<https://www.phoenixcontact.com/in/products/3006182>

PS-IH BU - Insulating sleeve

0311582

<https://www.phoenixcontact.com/in/products/0311582>



Insulating sleeve, number of positions: 1, fuse type: , mounting type: , , color: blue

PS-IH YE - Insulating sleeve

0311595

<https://www.phoenixcontact.com/in/products/0311595>



Insulating sleeve, number of positions: 1, fuse type: , mounting type: , , color: yellow

UIK 35 - Installation terminal block

3006182

<https://www.phoenixcontact.com/in/products/3006182>

PS-IH GN - Insulating sleeve

0311605

<https://www.phoenixcontact.com/in/products/0311605>



Insulating sleeve, number of positions: 1, fuse type: , mounting type: , , color: green

PS-IH GY - Insulating sleeve

0311621

<https://www.phoenixcontact.com/in/products/0311621>



Insulating sleeve, number of positions: 1, fuse type: , mounting type: , , color: gray

UIK 35 - Installation terminal block

3006182

<https://www.phoenixcontact.com/in/products/3006182>



PS-IH BK - Insulating sleeve

0311634

<https://www.phoenixcontact.com/in/products/0311634>



Insulating sleeve, number of positions: 1, fuse type: , mounting type: , , color: black

PS-IH VT - Insulating sleeve

0311618

<https://www.phoenixcontact.com/in/products/0311618>



Insulating sleeve, number of positions: 1, fuse type: , mounting type: , , color: violet

UIK 35 - Installation terminal block

3006182

<https://www.phoenixcontact.com/in/products/3006182>



CLIPFIX 35 - End clamp

3022218

<https://www.phoenixcontact.com/in/products/3022218>



Quick mounting end clamp for NS 35/7,5 DIN rail or NS 35/15 DIN rail, with marking option, width: 9.5 mm, color: gray

CLIPFIX 35-5 - End clamp

3022276

<https://www.phoenixcontact.com/in/products/3022276>



Quick mounting end clamp for NS 35/7,5 DIN rail or NS 35/15 DIN rail, with marking option, with parking option for FBS...5, FBS...6, KSS 5, KSS 6, width: 5.15 mm, color: gray

UIK 35 - Installation terminal block

3006182

<https://www.phoenixcontact.com/in/products/3006182>

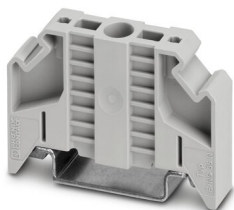


E/NS 35 N - End clamp

0800886

<https://www.phoenixcontact.com/in/products/0800886>

End clamp, width: 9.5 mm, color: gray



E/UK - End clamp

1201442

<https://www.phoenixcontact.com/in/products/1201442>

End clamp, material: PA, color: gray, Mounting on a DIN rail NS 32 or NS 35



UIK 35 - Installation terminal block

3006182

<https://www.phoenixcontact.com/in/products/3006182>



E/UK 1 - End clamp

1201413

<https://www.phoenixcontact.com/in/products/1201413>



End clamps, for supporting the ends of double-level and three-level terminal blocks, width: 10 mm, color: gray

PSB 6/5/6 - Female test connector

0205290

<https://www.phoenixcontact.com/in/products/0205290>



Female test connector, number of positions: 1, fuse type: , mounting type: , , , color: silver

Phoenix Contact 2023 © - all rights reserved
<https://www.phoenixcontact.com>

PHOENIX CONTACT (I) Pvt. Ltd.
A-58/2, Okhla Industrial Area, Phase - II, New Delhi-110 020

+91.1275.71420
info@phoenixcontact.co.in