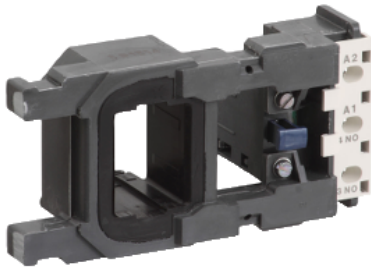


Product datasheet

Specifications



TeSys F - contactor coil - LX1FG - 220...230 V AC 50 Hz - 265...277 V AC 60 Hz

LX1FG220

ⓘ Discontinued on: 18 November 2021

ⓘ Discontinued

Main

Range	TeSys
Product or component type	Contactor coil
Device short name	LX1FG
Range compatibility	TeSys (TeSys F) LC1F contactor
Product compatibility	LC1F185 LC1F225
Control circuit type	AC at 50/60 Hz
[Uc] control circuit voltage	220...230 V AC 50 Hz 265...277 V AC 60 Hz
Inductance of closed circuit	2.59 H
Average resistance	16.5 Ohm at 20 °C
Operating time	20...35 ms closing 7...15 ms opening
Mechanical durability	10 Mcycles
Maximum operating rate	2400 cyc/h 55 °C

Complementary

Coil technology	Without built-in suppressor module
Control circuit voltage limits	Drop-out: 0.35...0.55 U _c 50/60 Hz (at 55 °C) Operational: 0.85...1.1 U _c 50/60 Hz (at 55 °C)
Inrush power in VA	805 VA 50 Hz cos phi 0.3 (at 20 °C) 970 VA 60 Hz cos phi 0.3 (at 20 °C)
Hold-in power consumption in VA	55 VA 50 Hz cos phi 0.3 (at 20 °C) 66 VA 60 Hz cos phi 0.3 (at 20 °C)
Heat dissipation	18...24 W at 50/60 Hz

Environment

Ambient air temperature for operation	-5...55 °C
Net weight	0.55 kg

Packing Units

Unit Type of Package 1	PCE
------------------------	-----

Number of Units in Package 1	1
Package 1 Height	7 cm
Package 1 Width	8 cm
Package 1 Length	16 cm
Package 1 Weight	545 g

Offer Sustainability

Sustainable offer status	Green Premium product
REACH Regulation	REACH Declaration
REACH free of SVHC	Yes
EU RoHS Directive	Pro-active compliance (Product out of EU RoHS legal scope) EU RoHS Declaration
Toxic heavy metal free	Yes
Mercury free	Yes
China RoHS Regulation	China RoHS declaration
RoHS exemption information	Yes
Environmental Disclosure	Product Environmental Profile
Circularity Profile	End of Life Information

Contractual warranty

Warranty	18 months
----------	-----------

Recommended replacement(s)

LX1FG220 may be replaced by any of the following products:

1x



TeSys F - specific contactor coil - 220...230 V AC 40...400 Hz low consumption
LX9FG220

1x



TeSys F - specific contactor coil - 220...230 V AC 40...400 Hz low consumption
LX9FG220