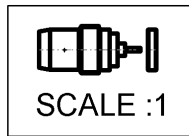
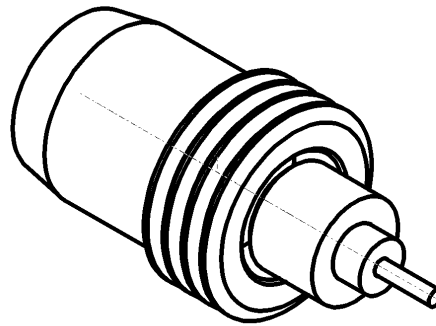
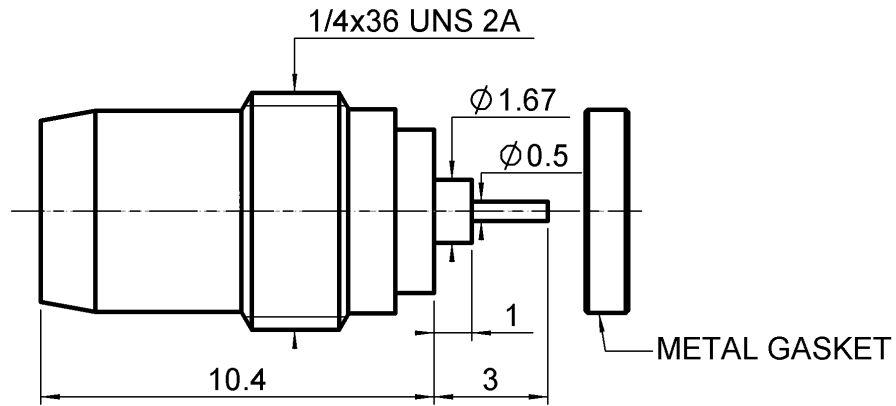
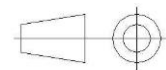


PAGE 1/3	ISSUE <b>08-02-16B</b>	SERIES <b>BMA</b>	PART NUMBER <b>R128639020</b>
----------	------------------------	-------------------	-------------------------------



All dimensions are in mm.



COMPONENTS	MATERIALS	PLATING (µm)
Body	<b>STAINLESS STEEL</b>	<b>GOLD 0.5 OVER NICKEL 2</b>
Center contact	<b>BERYLLIUM COPPER</b>	<b>GOLD 1.3 OVER NICKEL2</b>
Outer contact	-	-
Insulator	<b>PTFE</b>	-
Gasket	<b>A-G4MC</b>	-
Others parts	-	-
-	-	-
-	-	-

PAGE 2/3	ISSUE <b>08-02-16B</b>	SERIES <b>BMA</b>	PART NUMBER <b>R128639020</b>
----------	------------------------	-------------------	-------------------------------

**PACKAGING**

Standard	Unit	Other
<b>1</b>	<b>Contact us</b>	<b>Contact us</b>

**ELECTRICAL CHARACTERISTICS**

Impedance		<b>50</b>	Ω
Frequency		<b>0-22</b>	GHz
VSWR	<b>1.04</b>	<b>+</b>	<b>0,0090</b> x F(GHz) Maxi
Insertion loss		<b>0.03</b>	√F(GHz) dB Maxi
RF leakage	- (	<b>NA</b>	- F(GHz)) dB Maxi
Voltage rating		<b>500</b>	Veff Maxi
Dielectric withstanding voltage		<b>1500</b>	Veff mini
Insulation resistance		<b>5000</b>	MΩ mini

**ENVIRONMENTAL**

Operating temperature	<b>-65/+125</b>	°C
Hermetic seal	<b>10-8</b>	Atm.cm3/s
Panel leakage	<b>NA</b>	

**MECHANICAL CHARACTERISTICS**

Center contact retention			
Axial force – Mating End		<b>27</b>	N mini
Axial force – Opposite end		<b>27</b>	N mini
Torque		<b>NA</b>	N.cm mini
Recommended torque			
Mating		<b>NA</b>	N.cm
Panel nut		<b>280</b>	N.cm
Mating life		<b>1000</b>	Cycles mini
Weight		<b>1,2320</b>	g

**SPECIFICATION**

**OTHER CHARACTERISTICS**

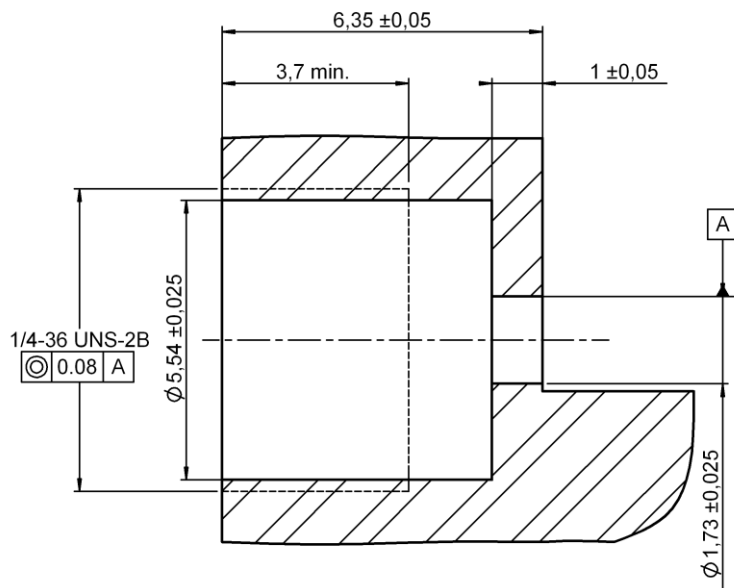
Assembly instruction:**NA**

Others:

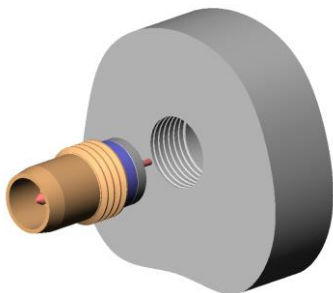
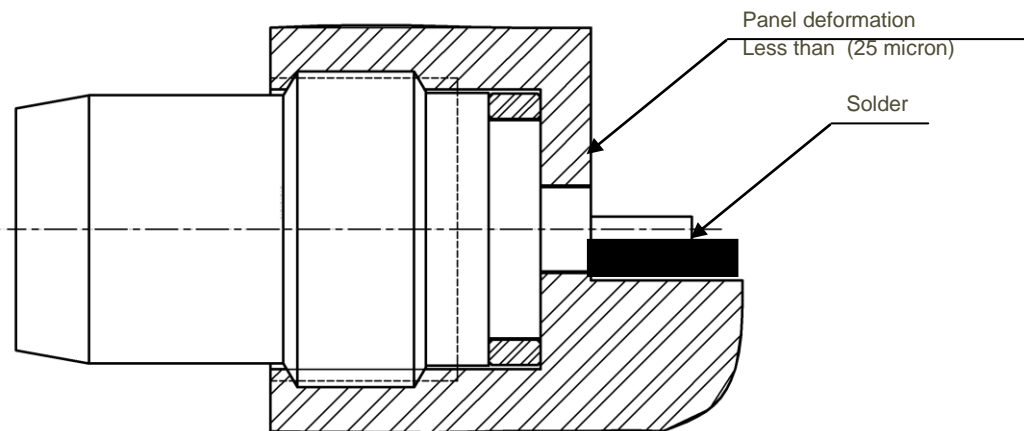
-

PAGE 3/3	ISSUE 08-02-16B	SERIES BMA	PART NUMBER R128639020
----------	-----------------	------------	------------------------

PANEL DRILLING



MOUNTING HOLE DETAIL



Assemble metal gasket onto connector. Screw both parts into the housing. Tighten the connector up to 280 Ncm torque (use special tooling set RADIALL R282 340 ). Thus the connection hermeticity is guaranteed at  $1 \cdot 10^{-8} \text{ atm.cm}^3/\text{sec.}$  Then solder the pin.  
Be careful not put too much solder.