

UK 10,3-HESI 1000V - Fuse holder



3211236

<https://www.phoenixcontact.com/in/products/3211236>

Please be informed that the data shown in this PDF document is generated from our Online Catalog. Please find the complete data in the user documentation. Our General Terms of Use for Downloads are valid.



Fuse holder, fuse type: Glass / ceramics / ..., fuse type: gPV 10.3 x 38 mm in accordance with 60269-6, nom. voltage: 1000 V, nominal current: 30 A, connection method: Screw connection, Rated cross section: 16 mm², cross section: 1.5 mm²- 25 mm², mounting type: NS 35/7,5, NS 35/15, color: black

Your advantages

- Fuse holder for fusing PV strings 1000 V DC
- Easy to bridge
- For 10 x 38 gPV fuse-links in accordance with IEC 60269-6

Commercial Data

Item number	3211236
Packing unit	10 pc
Minimum order quantity	10 pc
Sales Key	BE1
Product Key	BE1234
Catalog Page	Page 464 (C-1-2017)
GTIN	4046356482394
Weight per Piece (including packing)	50.42 g
Weight per Piece (excluding packing)	50.42 g
Customs tariff number	85369095
Country of origin	DE

Technical Data

Product properties

Product type	Fuse terminal block
Number of connections	2
Number of rows	1

Insulation characteristics

Overvoltage category	II
Degree of pollution	3

Electrical properties

Fuse type	Glass / ceramics / ...
Rated surge voltage	6 kV
Maximum power dissipation for nominal condition	4 W
Fuse	gPV 10.3 x 38 mm in accordance with 60269-6

Connection data

Number of connections per level	2
Nominal cross section	25 mm ²
Rated cross section AWG	3

Level 1 above 1 below 1

Screw thread	M5
Tightening torque	2 ... 2.5 Nm
Stripping length	11 mm
Internal cylindrical gage	A7
Connection in acc. with standard	IEC 60269-1 / -2
Conductor cross section rigid	1.5 mm ² ... 25 mm ²
Cross section AWG	16 ... 3 (converted acc. to IEC)
Conductor cross section flexible	0.75 mm ² ... 25 mm ²
Conductor cross section, flexible [AWG]	18 ... 3 (converted acc. to IEC)
Conductor cross-section flexible (ferrule without plastic sleeve)	1.5 mm ² ... 16 mm ²
Flexible conductor cross section (ferrule with plastic sleeve)	1.5 mm ² ... 16 mm ²
Cross-section with insertion bridge, rigid	10 mm ²
Cross-section with insertion bridge, flexible	10 mm ²
2 conductors with same cross section, solid	1.5 mm ² ... 4 mm ²
2 conductors with same cross section, flexible	0.75 mm ² ... 10 mm ²
2 conductors with same cross section, flexible, with ferrule without plastic sleeve	1.5 mm ² ... 4 mm ²
2 conductors with the same cross section, flexible, with TWIN ferrule with plastic sleeve	1.5 mm ² ... 10 mm ²
Nominal current	30 A (the current and voltage are determined by the fuse)
Maximum load current	30 A (the current and voltage are determined by the fuse)
Nominal voltage	1000 V DC (the current and voltage are determined by the fuse)

UK 10,3-HESI 1000V - Fuse holder



3211236

<https://www.phoenixcontact.com/in/products/3211236>

Nominal cross section	16 mm ²
-----------------------	--------------------

Dimensions

Width	18 mm
Height NS 35/15	73 mm
Height NS 35/7,5	65.5 mm
Length	81 mm

Material specifications

Color	black
Flammability rating according to UL 94	V2
Insulating material group	IIIa
Relative insulation material temperature index (Elec., UL 746 B)	125 °C

Mechanical properties

Mechanical data

Open side panel	No
-----------------	----

Environmental and real-life conditions

Ambient conditions

Ambient temperature (operation)	-60 °C ... 85 °C (max. short-term operating temperature RTI Elec.)
Ambient temperature (storage/transport)	-25 °C ... 55 °C (for a short time, not exceeding 24 h, -60 °C to +70 °C)
Ambient temperature (assembly)	-5 °C ... 70 °C
Ambient temperature (actuation)	-5 °C ... 70 °C
Permissible humidity (storage/transport)	30 % ... 70 %

Standards and regulations

Connection in acc. with standard	IEC 60269-1 / -2
----------------------------------	------------------

Mounting

Mounting type	NS 35/7,5
	NS 35/15

UK 10,3-HESI 1000V - Fuse holder

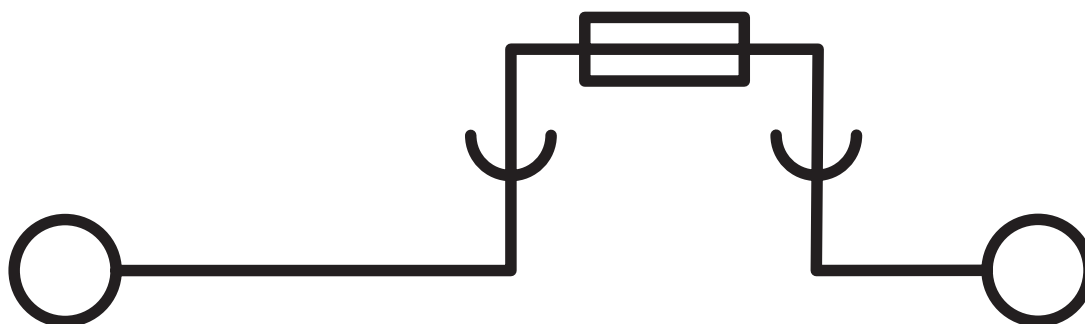
3211236

<https://www.phoenixcontact.com/in/products/3211236>



Drawings

Circuit diagram




UK 10,3-HESI 1000V - Fuse holder





3211236


<https://www.phoenixcontact.com/in/products/3211236>

Approvals

 CSA Approval ID: 225908				
	Nominal Voltage U_N	Nominal Current I_N	Cross Section AWG	Cross Section mm^2
	1000 V	30 A	18 - 8	-
	1000 V	30 A	18 - 6	-

 EAC Approval ID: RU C-DE.A*30.B.01742				
---	--	--	--	--

 EAC Approval ID: RU C-DE.BL08.B.00534				
---	--	--	--	--

 UL Listed Approval ID: FILE E 353282				
--	--	--	--	--

UK 10,3-HESI 1000V - Fuse holder



3211236

<https://www.phoenixcontact.com/in/products/3211236>

Classifications

ECLASS

ECLASS-11.0	27141116
ECLASS-12.0	27141116
ECLASS-13.0	27250113

ETIM

ETIM 8.0	EC000899
----------	----------

UNSPSC

UNSPSC 21.0	39121400
-------------	----------

UK 10,3-HESI 1000V - Fuse holder



3211236

<https://www.phoenixcontact.com/in/products/3211236>

Environmental Product Compliance


China RoHS	Environmentally friendly use period: unlimited = EFUP-e
	No hazardous substances above threshold values

UK 10,3-HESI 1000V - Fuse holder

3211236

<https://www.phoenixcontact.com/in/products/3211236>

Accessories

 Note: Applying some accessories below might limit this product.

EB 56-18 - Insertion bridge

3009299

<https://www.phoenixcontact.com/in/products/3009299>



Insertion bridge, pitch: 18 mm, number of positions: 56, color: gray

 Max. current carrying capacity: 76 A

EB 2-18 - Insertion bridge

3009300

<https://www.phoenixcontact.com/in/products/3009300>



Insertion bridge, pitch: 17.8 mm, number of positions: 2, color: light gray

 Max. current carrying capacity: 76 A

UK 10,3-HESI 1000V - Fuse holder

3211236

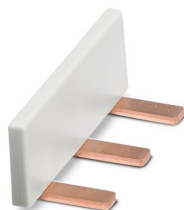
<https://www.phoenixcontact.com/in/products/3211236>




EB 3-18 - Insertion bridge

3009305

<https://www.phoenixcontact.com/in/products/3009305>



Insertion bridge, pitch: 17.8 mm, number of positions: 3, color: light gray

 Max. current carrying capacity: 76 A

VS-UK 10,3-HESI N 2POL - Connection pin

3048532

<https://www.phoenixcontact.com/in/products/3048532>



Connection pin, plastic, for coupling two fuse terminal blocks, color: white, diameter: 3 mm

UK 10,3-HESI 1000V - Fuse holder

3211236

<https://www.phoenixcontact.com/in/products/3211236>



VS-UK 10,3-HESI N 3POL - Connection pin

3048409

<https://www.phoenixcontact.com/in/products/3048409>



Connection pin, plastic, for coupling three fuse terminal blocks, color: white, diameter: 3 mm

SF-SL 0,6X3,5-100 S-VDE - Screwdriver

1212587

<https://www.phoenixcontact.com/in/products/1212587>



Actuation tool, for ST terminal blocks, VDE insulated, with slimmer insulation integrated in the blade, also suitable for use as a bladed screwdriver, size: 0.6 x 3.5 x 100 mm, 2-component grip, with non-slip grip

UK 10,3-HESI 1000V - Fuse holder

3211236

<https://www.phoenixcontact.com/in/products/3211236>



SZK PZ2 VDE - Screwdriver

1206463

<https://www.phoenixcontact.com/in/products/1206463>



Screwdriver, PZ crosshead, VDE insulated, size: PZ 2 x 100 mm, 2-component grip, with non-slip grip

SZS 1,0X4,0 VDE - Screwdriver

1205066

<https://www.phoenixcontact.com/in/products/1205066>



Screwdriver, slot-headed, VDE insulated, size: 1.0 x 4.0 x 100 mm, 2-component grip, with non-slip grip

UK 10,3-HESI 1000V - Fuse holder

3211236

<https://www.phoenixcontact.com/in/products/3211236>



FUSE 10,3X38 2A PV - Fuse

3061295

<https://www.phoenixcontact.com/in/products/3061295>



Fuse, 10.3x38 mm, up to 1000 V DC, gPV characteristics

FUSE 10,3X38 4A PV - Fuse

3061305

<https://www.phoenixcontact.com/in/products/3061305>



Fuse, 10.3x38 mm, up to 1000 V DC, gPV characteristics

UK 10,3-HESI 1000V - Fuse holder

3211236

<https://www.phoenixcontact.com/in/products/3211236>



FUSE 10,3X38 6A PV - Fuse

3061318

<https://www.phoenixcontact.com/in/products/3061318>

Fuse, 10.3x38 mm, up to 1000 V DC, gPV characteristics



FUSE 10,3X38 8A PV - Fuse

3061321

<https://www.phoenixcontact.com/in/products/3061321>

Fuse, 10.3x38 mm, up to 1000 V DC, gPV characteristics



UK 10,3-HESI 1000V - Fuse holder

3211236

<https://www.phoenixcontact.com/in/products/3211236>



FUSE 10,3X38 10A PV - Fuse

3061334

<https://www.phoenixcontact.com/in/products/3061334>



Fuse, 10.3x38 mm, up to 1000 V DC, gPV characteristics

FUSE 10,3X38 12A PV - Fuse

3061347

<https://www.phoenixcontact.com/in/products/3061347>



Fuse, 10.3x38 mm, up to 1000 V DC, gPV characteristics

UK 10,3-HESI 1000V - Fuse holder

3211236

<https://www.phoenixcontact.com/in/products/3211236>



FUSE 10,3X38 16A PV - Fuse

3061350

<https://www.phoenixcontact.com/in/products/3061350>

Fuse, 10.3x38 mm, up to 1000 V DC, gPV characteristics



FUSE 10,3X38 20A PV - Fuse

3061363

<https://www.phoenixcontact.com/in/products/3061363>

Fuse, 10.3x38 mm, up to 1000 V DC, gPV characteristics



UK 10,3-HESI 1000V - Fuse holder

3211236

<https://www.phoenixcontact.com/in/products/3211236>



FUSE 10,3X38 25A PV - Fuse

3061364

<https://www.phoenixcontact.com/in/products/3061364>

Fuse, 10.3x38 mm, up to 1000 V DC, gPV characteristics



FUSE 10,3X38 15A PV - Fuse

3061348

<https://www.phoenixcontact.com/in/products/3061348>

Fuse, 10.3x38 mm, up to 1000 V DC, gPV characteristics



UK 10,3-HESI 1000V - Fuse holder

3211236

<https://www.phoenixcontact.com/in/products/3211236>



NS 35/ 7,5 PERF 2000MM - DIN rail perforated

0801733

<https://www.phoenixcontact.com/in/products/0801733>



DIN rail perforated, acc. to EN 60715, material: Steel, galvanized, passivated with a thick layer, Standard profile, color: silver, Pack of 25 (50 m)

NS 35/ 7,5 UNPERF 2000MM - DIN rail, unperforated

0801681

<https://www.phoenixcontact.com/in/products/0801681>



DIN rail, unperforated, acc. to EN 60715, material: Steel, galvanized, passivated with a thick layer, Standard profile, color: silver, Pack of 25 (50 m)

UK 10,3-HESI 1000V - Fuse holder

3211236

<https://www.phoenixcontact.com/in/products/3211236>



NS 35/ 7,5 WH PERF 2000MM - DIN rail perforated

1204119

<https://www.phoenixcontact.com/in/products/1204119>



DIN rail perforated, acc. to EN 60715, material: Steel, Galvanized, white passivated, Standard profile, color: silver, Pack of 25 (50 m)

NS 35/ 7,5 WH UNPERF 2000MM-VPE 10 - DIN rail, unperforated

1204122

<https://www.phoenixcontact.com/in/products/1204122>



DIN rail, unperforated, acc. to EN 60715, material: Steel, Galvanized, white passivated, Standard profile, color: silver, Pack of 10 (20 m)

UK 10,3-HESI 1000V - Fuse holder

3211236

<https://www.phoenixcontact.com/in/products/3211236>



NS 35/ 7,5 AL UNPERF 2000MM - DIN rail, unperforated

0801704

<https://www.phoenixcontact.com/in/products/0801704>



DIN rail, unperforated, acc. to EN 60715, material: Aluminum, uncoated, Standard profile, color: silver, Pack of 25 (50 m)

NS 35/ 7,5 ZN PERF 2000MM - DIN rail perforated

1206421

<https://www.phoenixcontact.com/in/products/1206421>



DIN rail perforated, acc. to EN 60715, material: Steel, galvanized, Standard profile, color: silver, Pack of 25 (50 m)

UK 10,3-HESI 1000V - Fuse holder

3211236

<https://www.phoenixcontact.com/in/products/3211236>



NS 35/ 7,5 ZN UNPERF 2000MM - DIN rail, unperforated

1206434

<https://www.phoenixcontact.com/in/products/1206434>



DIN rail, unperforated, acc. to EN 60715, material: Steel, galvanized, Standard profile, color: silver, Pack of 25 (50 m)

NS 35/ 7,5 CU UNPERF 2000MM-VPE 10 - DIN rail, unperforated

0801762

<https://www.phoenixcontact.com/in/products/0801762>



DIN rail, unperforated, acc. to EN 60715, material: Copper, uncoated, Standard profile, color: copper-colored, Pack of 10 (20 m)

UK 10,3-HESI 1000V - Fuse holder

3211236

<https://www.phoenixcontact.com/in/products/3211236>



NS 35/ 7,5 CAP - End cap

1206560

<https://www.phoenixcontact.com/in/products/1206560>

DIN rail end piece, for DIN rail NS 35/7.5



NS 35/15 PERF 2000MM - DIN rail perforated

1201730

<https://www.phoenixcontact.com/in/products/1201730>



DIN rail perforated, similar to EN 60715, material: Steel, galvanized, passivated with a thick layer, Standard profile, color: silver, Pack of 25 (50 m)

UK 10,3-HESI 1000V - Fuse holder

3211236

<https://www.phoenixcontact.com/in/products/3211236>



NS 35/15 UNPERF 2000MM - DIN rail, unperforated

1201714

<https://www.phoenixcontact.com/in/products/1201714>



DIN rail, unperforated, similar to EN 60715, material: Steel, galvanized, passivated with a thick layer, Standard profile, color: silver, Pack of 25 (50 m)

NS 35/15 WH PERF 2000MM - DIN rail perforated

0806602

<https://www.phoenixcontact.com/in/products/0806602>



DIN rail perforated, similar to EN 60715, material: Steel, Galvanized, white passivated, Standard profile, color: white, Pack of 25 (50 m)

UK 10,3-HESI 1000V - Fuse holder

3211236

<https://www.phoenixcontact.com/in/products/3211236>



NS 35/15 WH UNPERF 2000MM-VPE 10 - DIN rail, unperforated

1204135

<https://www.phoenixcontact.com/in/products/1204135>



DIN rail, unperforated, similar to EN 60715, material: Steel, Galvanized, white passivated, Standard profile, color: silver, Pack of 10 (20 m)

NS 35/15 AL UNPERF 2000MM - DIN rail, unperforated

1201756

<https://www.phoenixcontact.com/in/products/1201756>



DIN rail, unperforated, similar to EN 60715, material: Aluminum, uncoated, Standard profile, color: silver

UK 10,3-HESI 1000V - Fuse holder

3211236

<https://www.phoenixcontact.com/in/products/3211236>



NS 35/15 ZN PERF 2000MM - DIN rail perforated

1206599

<https://www.phoenixcontact.com/in/products/1206599>



DIN rail perforated, similar to EN 60715, material: Steel, galvanized, Standard profile, color: silver, Pack of 25 (50 m)

NS 35/15 ZN UNPERF 2000MM - DIN rail, unperforated

1206586

<https://www.phoenixcontact.com/in/products/1206586>



DIN rail, unperforated, similar to EN 60715, material: Steel, galvanized, Standard profile, color: silver, Pack of 25 (50 m)

UK 10,3-HESI 1000V - Fuse holder

3211236

<https://www.phoenixcontact.com/in/products/3211236>



NS 35/15 CU UNPERF 2000MM-VPE 10 - DIN rail, unperforated

1201895

<https://www.phoenixcontact.com/in/products/1201895>



DIN rail, unperforated, similar to EN 60715, material: Copper, uncoated, Standard profile, color: copper-colored, Pack of 10 (20 m)

NS 35/15 CAP - End cap

1206573

<https://www.phoenixcontact.com/in/products/1206573>

DIN rail end piece, for DIN rail NS 35/15



UK 10,3-HESI 1000V - Fuse holder

3211236

<https://www.phoenixcontact.com/in/products/3211236>



NS 35/15-2,3 UNPERF 2000MM-VPE 10 - DIN rail, unperforated

1201798

<https://www.phoenixcontact.com/in/products/1201798>



DIN rail, unperforated, acc. to EN 60715, material: Steel, galvanized, passivated with a thick layer, Standard profile 2.3 mm, color: silver, Pack of 10 (20 m)

ZBF 16:UNPRINTED - Zack Marker strip, flat

0827464

<https://www.phoenixcontact.com/in/products/0827464>



Zack Marker strip, flat, Strip, white, unlabeled, can be labeled with: PLOTMARK, CMS-P1-PLOTTER, mounting type: snapped, for terminal block width: 16 mm, lettering field size: 16.25 x 10.5 mm, Number of individual labels: 50

UK 10,3-HESI 1000V - Fuse holder

3211236

<https://www.phoenixcontact.com/in/products/3211236>



ZBF 16 CUS - Zack Marker strip, flat

0827465

<https://www.phoenixcontact.com/in/products/0827465>



Zack Marker strip, flat, can be ordered: Strip, white, labeled according to customer specifications, mounting type: snap into flat marker groove, for terminal block width: 16 mm, lettering field size: 5.15 x 16 mm, Number of individual labels: 5

UC-TMF 16 - Marker for terminal blocks

0819262

<https://www.phoenixcontact.com/in/products/0819262>



Marker for terminal blocks, Sheet, white, unlabeled, can be labeled with: BLUEMARK ID COLOR, BLUEMARK ID, BLUEMARK CLED, PLOTMARK, CMS-P1-PLOTTER, mounting type: snapped, for terminal block width: 16 mm, lettering field size: 15.45 x 5.1 mm, Number of individual labels: 32

UK 10,3-HESI 1000V - Fuse holder

3211236

<https://www.phoenixcontact.com/in/products/3211236>



UC-TMF 16 CUS - Marker for terminal blocks

0824678

<https://www.phoenixcontact.com/in/products/0824678>



Marker for terminal blocks, can be ordered: by sheet, white, labeled according to customer specifications, mounting type: snap into flat marker groove, for terminal block width: 16 mm, lettering field size: 15.45 x 5.1 mm, Number of individual labels: 32

UCT-TMF 16 - Marker for terminal blocks

0829218

<https://www.phoenixcontact.com/in/products/0829218>



Marker for terminal blocks, Sheet, white, unlabeled, can be labeled with: TOPMARK NEO, TOPMARK LASER, BLUEMARK ID COLOR, BLUEMARK ID, BLUEMARK CLED, THERMOMARK PRIME, THERMOMARK CARD 2.0, THERMOMARK CARD, mounting type: snapped, for terminal block width: 16 mm, lettering field size: 15.2 x 4.7 mm, Number of individual labels: 24

UK 10,3-HESI 1000V - Fuse holder

3211236

<https://www.phoenixcontact.com/in/products/3211236>



UCT-TMF 16 CUS - Marker for terminal blocks

0829693

<https://www.phoenixcontact.com/in/products/0829693>



Marker for terminal blocks, can be ordered: by sheet, white, labeled according to customer specifications, mounting type: snap into flat marker groove, for terminal block width: 16 mm, lettering field size: 15.2 x 4.7 mm, Number of individual labels: 24

CLIPFIX 35 - End clamp

3022218

<https://www.phoenixcontact.com/in/products/3022218>



Quick mounting end clamp for NS 35/7,5 DIN rail or NS 35/15 DIN rail, with marking option, width: 9.5 mm, color: gray

UK 10,3-HESI 1000V - Fuse holder

3211236

<https://www.phoenixcontact.com/in/products/3211236>



CLIPFIX 35-5 - End clamp

3022276

<https://www.phoenixcontact.com/in/products/3022276>

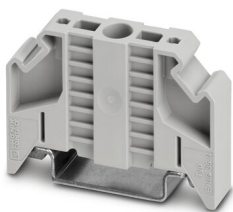


Quick mounting end clamp for NS 35/7,5 DIN rail or NS 35/15 DIN rail, with marking option, with parking option for FBS...5, FBS...6, KSS 5, KSS 6, width: 5.15 mm, color: gray

E/NS 35 N - End clamp

0800886

<https://www.phoenixcontact.com/in/products/0800886>



End clamp, width: 9.5 mm, color: gray

UK 10,3-HESI 1000V - Fuse holder

3211236

<https://www.phoenixcontact.com/in/products/3211236>



FUSE 10,3X38 25A PV 900V - Fuse

3061365

<https://www.phoenixcontact.com/in/products/3061365>



Fuse, 10.3 mm x 38 mm, up to 900 V DC, gPV characteristic

FUSE 10,3X38 6A PV A - Fuse

3062778

<https://www.phoenixcontact.com/in/products/3062778>



Fuse, for the photovoltaics industry according to UL 2579, nominal current: 6 A, length: 38 mm, diameter: 10.3 mm, color: white

UK 10,3-HESI 1000V - Fuse holder

3211236

<https://www.phoenixcontact.com/in/products/3211236>



FUSE 10,3X38 8A PV A - Fuse

3062779

<https://www.phoenixcontact.com/in/products/3062779>



Fuse, for the photovoltaics industry according to UL 2579, nominal current: 8 A, length: 38 mm, diameter: 10.3 mm, color: white

FUSE 10,3X38 10A PV A - Fuse

3062780

<https://www.phoenixcontact.com/in/products/3062780>



Fuse, for the photovoltaics industry according to UL 2579, nominal current: 10 A, length: 38 mm, diameter: 10.3 mm, color: white

UK 10,3-HESI 1000V - Fuse holder

3211236

<https://www.phoenixcontact.com/in/products/3211236>



FUSE 10,3X38 12A PV A - Fuse

3062781

<https://www.phoenixcontact.com/in/products/3062781>



Fuse, for the photovoltaics industry according to UL 2579, nominal current: 12 A, length: 38 mm, diameter: 10.3 mm, color: white

FUSE 10,3X38 16A PV A - Fuse

3062782

<https://www.phoenixcontact.com/in/products/3062782>



Fuse, for the photovoltaics industry according to UL 2579, nominal current: 16 A, length: 38 mm, diameter: 10.3 mm, color: white

UK 10,3-HESI 1000V - Fuse holder

3211236

<https://www.phoenixcontact.com/in/products/3211236>



FUSE 10,3X38 15A PV A - Fuse

3062784

<https://www.phoenixcontact.com/in/products/3062784>



Fuse, for the photovoltaics industry according to UL 2579, nominal current: 15 A, length: 38 mm, diameter: 10.3 mm, color: white

Phoenix Contact 2023 © - all rights reserved

<https://www.phoenixcontact.com>

PHOENIX CONTACT (I) Pvt. Ltd.

A-58/2, Okhla Industrial Area, Phase - II, New Delhi-110 020

+91.1275.71420

info@phoenixcontact.co.in