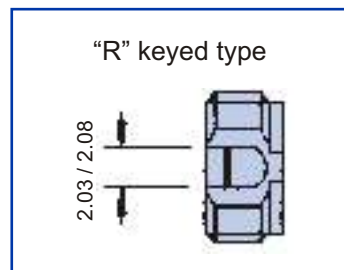
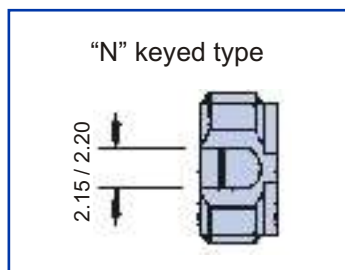


Features



- Alignment sleeve material : zirconia ceramic or phosphor bronze
- "N" keyed type and "R" type available
- 3 versions available : square flange
 - "D" hole standard 9mm
 - "D" hole compact 8mm.
- Screw threaded coupling

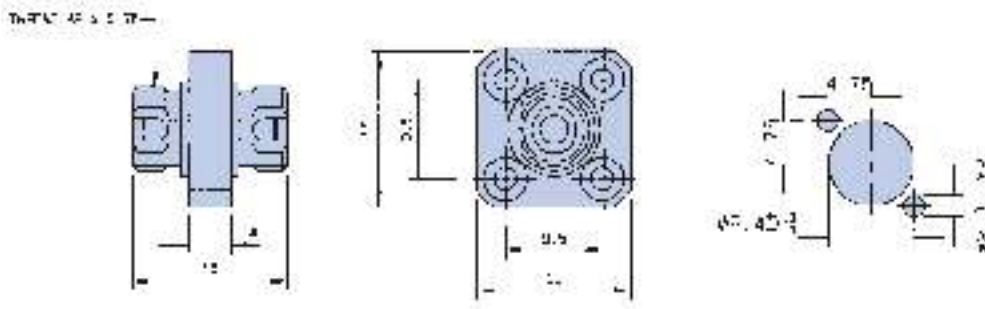
	Alignment sleeve	Packaging	Part numbers	
			Keyed "N"	Keyed "R"
Square flange	Zirconia ceramic	1	F 729 701 000	F 729 701 110
		100	F 729 711 000	F 729 711 110
	Phosphor bronze	1	F 729 701 200	-
		100	F 729 711 200	-
"D" hole standard 9mm Supplied with lock washer and nut for panel mounting	Zirconia ceramic	1	F 729 708 000	F 729 708 110
		100	F 729 718 000	F 729 718 110
	Phosphor bronze	1	F 729 708 200	-
		100	F 729 718 200	-
"D" hole compact 8mm Supplied with lock washer and nut for panel mounting	Zirconia ceramic	1	F 729 702 000	F 729 702 110
		100	F 729 712 000	F 729 712 110
	Phosphor bronze	1	F 729 702 200	-
		100	F 729 712 200	-



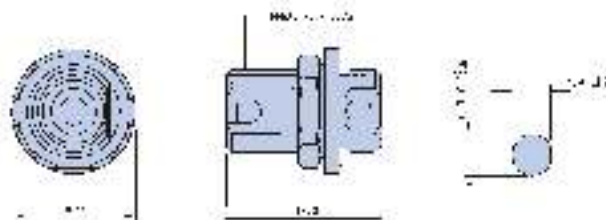
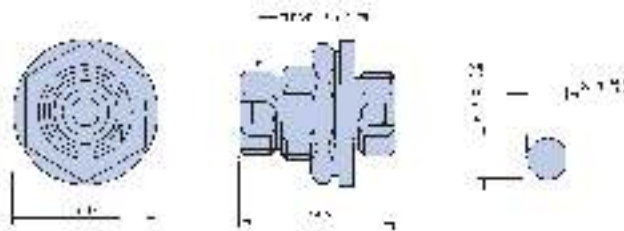
Note : FC connector type N can be inserted into only adaptors of type "N".

Dimensions (mm)

Square flange



“D” hole 9 mm



mm to inch : 0.03937