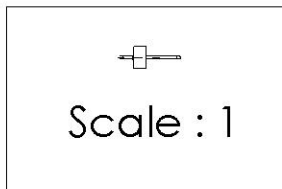
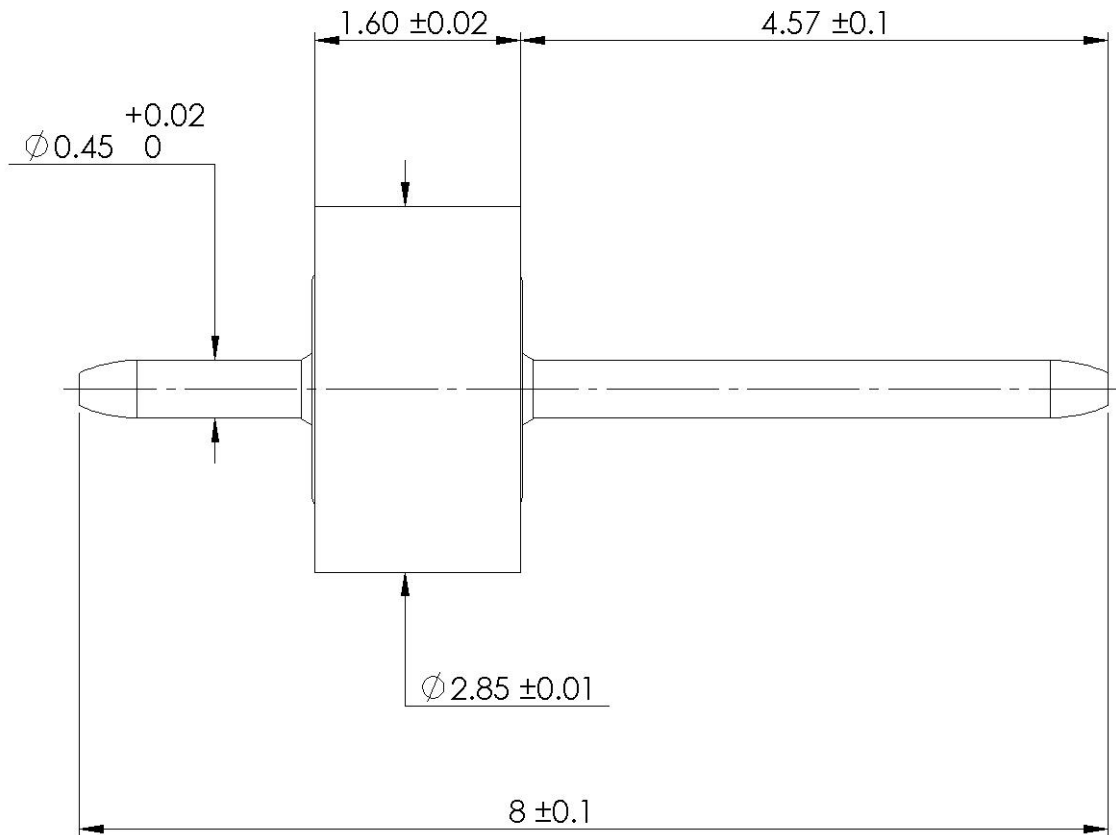
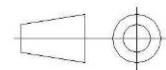


PAGE 1/1	ISSUE 2022A	SERIES <b>ACCESSORY</b>	PART NUMBER <b>R280755600</b>
----------	-------------	----------------------------	-------------------------------



All dimensions are in mm.



COMPONENTS	MATERIALS	PLATING ( $\mu\text{m}$ )
Body	<b>DILVER P1</b>	<b>GOLD 1.3 OVER NICKEL2</b>
Center contact	<b>DILVER P1</b>	<b>GOLD 1.3 OVER NICKEL2</b>
Outer contact	-	-
Insulator	<b>GLASS</b>	-
Gasket	-	-
Others parts	-	-
-	-	-
-	-	-
Operating temperature	<b>-65 +165</b> °C	
Weight	<b>0.1</b> g	
Others characteristics	<b>Hermetic seal <math>10^{-8}</math> Atm/cm<sup>3</sup>/s</b>	