

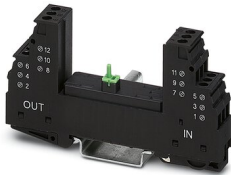
PT 2X2-BE - Surge protection base-element



2839208

<https://www.phoenixcontact.com/in/products/2839208>

Please be informed that the data shown in this PDF document is generated from our Online Catalog. Please find the complete data in the user documentation. Our General Terms of Use for Downloads are valid.



Base element for protective plug PT with protective circuit for two 2-wire floating signal circuit, bridge between the connections 3-4 (GND) and 9-10, for mounting on NS 35/7.5 and NS 35/15, housing width: 17.5 mm

Your advantages

- Maximum ease of maintenance, thanks to the 2-piece design
- Easy selection for all possible demands in MCR applications with a complete product portfolio
- The signal is not influenced during maintenance work, thanks to the impedance-neutral insertion and removal of protective plugs

Commercial Data

| | |
|--------------------------------------|---------------------|
| Item number | 2839208 |
| Packing unit | 10 pc |
| Minimum order quantity | 1 pc |
| Sales Key | CL2 |
| Product Key | CL2111 |
| Catalog Page | Page 123 (C-4-2019) |
| GTIN | 4017918182748 |
| Weight per Piece (including packing) | 57.32 g |
| Weight per Piece (excluding packing) | 50.23 g |
| Customs tariff number | 85363010 |
| Country of origin | DE |

PT 2X2-BE - Surge protection base-element

2839208

<https://www.phoenixcontact.com/in/products/2839208>

Technical Data

Notes

| | |
|--------------------|---|
| Notes on operation | When the PT...-BE base elements are used, the connections 9/10 (GND) are directly connected to the DIN rail via the metal mounting foot. |
|--------------------|---|

Product properties

| | |
|--------------------------------|---------------------------------|
| Type | Base element, DIN rail mounting |
| Product type | Base element |
| Product family | PLUGTRAB PT |
| Number of positions | 4 |
| Surge protection fault message | none |
| Wire pairs per module | 2 |

Insulation characteristics

| | |
|----------------------|-----|
| Overvoltage category | III |
| Pollution degree | 2 |

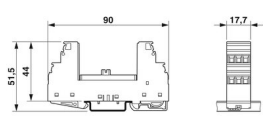
Electrical properties

| | |
|-----------------------|---------|
| Nominal voltage U_N | 24 V AC |
| | 24 V DC |

Connection data

| | |
|----------------------------------|---|
| Connection method | Screw connection |
| Screw thread | M3 |
| Tightening torque | 0.5 Nm |
| Conductor cross section flexible | 0.2 mm ² ... 2.5 mm ² |
| Conductor cross section rigid | 0.2 mm ² ... 4 mm ² |
| Conductor cross section AWG | 24 ... 12 |

Dimensions

| | |
|---------------------|--|
| Dimensional drawing |  |
| Width | 17.7 mm |
| Height | 90 mm |
| Depth | 51.5 mm (incl. DIN rail 7.5 mm) |
| Horizontal pitch | 1 Div. |

Material specifications

| | |
|--|--------------------|
| Color | jet black RAL 9005 |
| Flammability rating according to UL 94 | V-0 |

PT 2X2-BE - Surge protection base-element



2839208

<https://www.phoenixcontact.com/in/products/2839208>

| | |
|------------------|--------|
| Housing material | PA 6.6 |
|------------------|--------|

Mechanical properties

Mechanical data

| | |
|-----------------|----|
| Open side panel | No |
|-----------------|----|

Protective circuit

| | |
|----------------------------------|-------------------------|
| Maximum continuous voltage U_C | 40 V DC |
| | 28 V AC |
| Rated current | 450 mA (45 °C) |
| Resistance per path | 2.2 Ω \pm 10 % |
| Max. required back-up fuse | 500 mA (T) |

Environmental and real-life conditions

Ambient conditions

| | |
|---|---|
| Degree of protection | IP20 |
| Ambient temperature (operation) | -40 °C ... 85 °C |
| Ambient temperature (storage/transport) | -40 °C ... 85 °C |
| Altitude | \leq 2000 m (amsl (above mean sea level)) |

Standards and regulations

Air clearances and creepage distances

| | |
|--------------------------|--------------|
| Standards/regulations | VDE 0110-1 |
| Standards/specifications | IEC 61643-21 |
| Standards/specifications | EN 61643-21 |

Mounting

| | |
|---------------|-----------------|
| Mounting type | DIN rail: 35 mm |
|---------------|-----------------|

PT 2X2-BE - Surge protection base-element

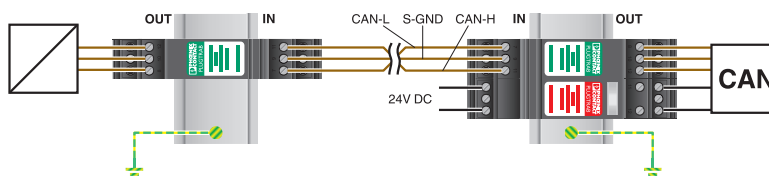


2839208

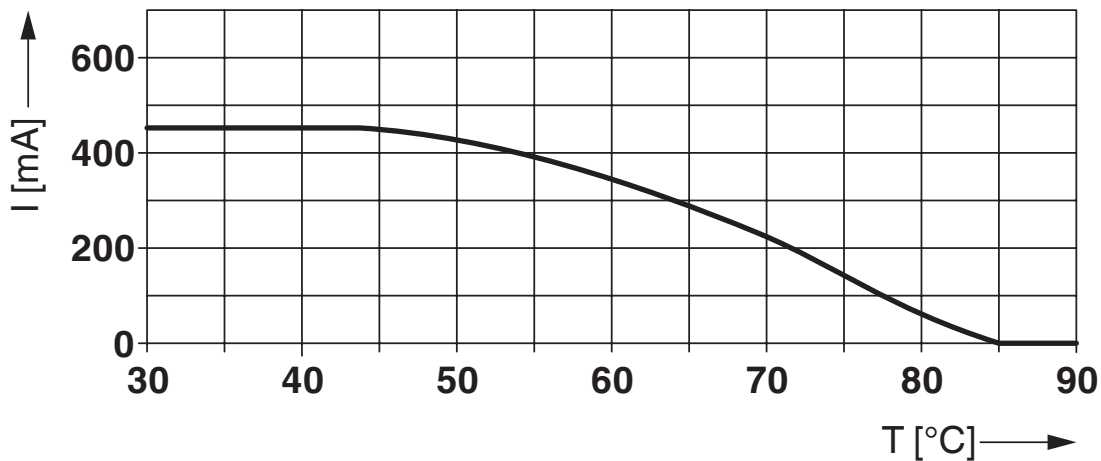
<https://www.phoenixcontact.com/in/products/2839208>

Drawings

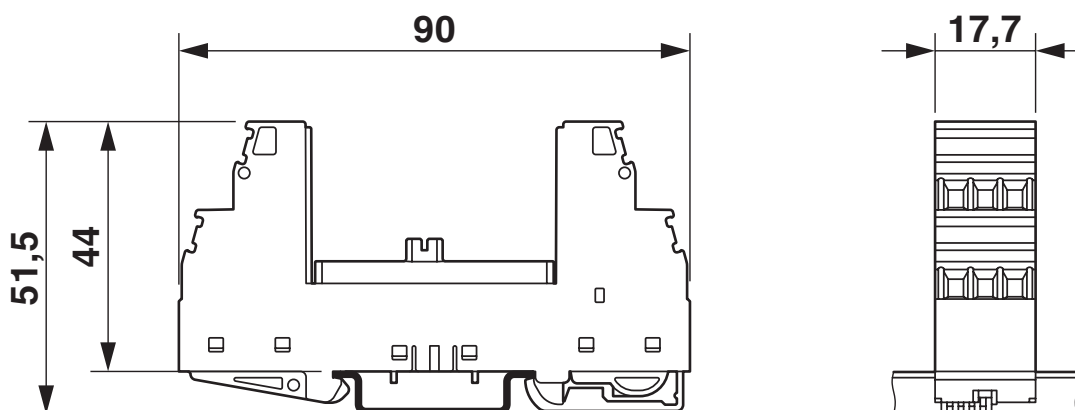
Application drawing



Diagram



Dimensional drawing



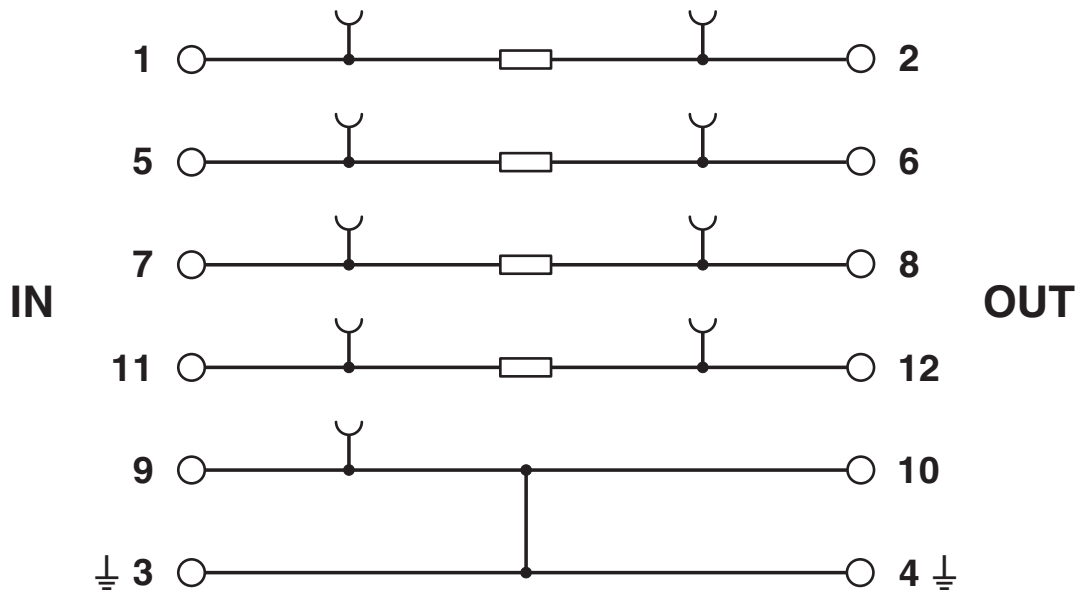
PT 2X2-BE - Surge protection base-element

2839208

<https://www.phoenixcontact.com/in/products/2839208>



Circuit diagram



PT 2X2-BE - Surge protection base-element



2839208

<https://www.phoenixcontact.com/in/products/2839208>

Approvals



EAC

Approval ID: EAC-Zulassung



DNV GL

Approval ID: TAE00001N6



EAC

Approval ID: RU C-DE.*09.B.00169



UL Listed

Approval ID: FILE E 138168

| Nominal Voltage U_N | Nominal Current I_N | Cross Section AWG | Cross Section mm^2 |
|-----------------------|-----------------------|-------------------|-----------------------------|
| 17 V | 0.45 A | - | - |



cUL Listed

Approval ID: FILE E 333250



UL Listed

Approval ID: FILE E 333250



ATEX

Approval ID: 2856113_Ex-n

PT 2X2-BE - Surge protection base-element



2839208

<https://www.phoenixcontact.com/in/products/2839208>

Classifications

ECLASS

ECLASS-11.0

27130803

ETIM

ETIM 8.0

EC000472

UNSPSC

UNSPSC 21.0

39121600

PT 2X2-BE - Surge protection base-element



2839208

<https://www.phoenixcontact.com/in/products/2839208>

Environmental Product Compliance

| | |
|------------|---|
| China RoHS | Environmentally friendly use period: unlimited = EFUP-e |
| | No hazardous substances above threshold values |

PT 2X2-BE - Surge protection base-element



2839208

<https://www.phoenixcontact.com/in/products/2839208>

Accessories

SSA 5-10 - Shield connection

2839512

<https://www.phoenixcontact.com/in/products/2839512>



Shield fast connection for 5 ... 10 mm cable diameter. Potential connecting cable:
200 mm, 1 mm², color: black

SSA 3-6 - Shield connection

2839295

<https://www.phoenixcontact.com/in/products/2839295>



Shield fast connection for 3 ... 6 mm cable diameter. Potential connecting cable:
200 mm, 1 mm², color: black

PT 2X2-BE - Surge protection base-element

2839208

<https://www.phoenixcontact.com/in/products/2839208>

ZB 5 :UNBEDRUCKT - Zack marker strip

1050004

<https://www.phoenixcontact.com/in/products/1050004>



Zack marker strip, Strip, white, unlabeled, can be labeled with: PLOTMARK, CMS-P1-PLOTTER, mounting type: snapped, for terminal block width: 5.2 mm, lettering field size: 5.1 x 10.5 mm, Number of individual labels: 10

ZBF 5:UNBEDRUCKT - Zack Marker strip, flat

0808642

<https://www.phoenixcontact.com/in/products/0808642>



Zack Marker strip, flat, Strip, white, unlabeled, can be labeled with: PLOTMARK, CMS-P1-PLOTTER, mounting type: snapped, for terminal block width: 5 mm, lettering field size: 5.1 x 5.2 mm, Number of individual labels: 10

PT 2X2-BE - Surge protection base-element

2839208

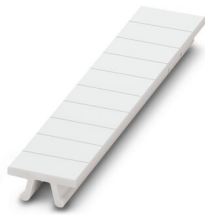
<https://www.phoenixcontact.com/in/products/2839208>



ZB 5,8:UNBEDRUCKT - Zack marker strip

2715209

<https://www.phoenixcontact.com/in/products/2715209>



Zack marker strip, Strip, white, unlabeled, can be labeled with: PLOTMARK, CMS-P1-PLOTTER, mounting type: snapped, for terminal block width: 5.8 mm, lettering field size: 5.75 x 10.5 mm, Number of individual labels: 10

X-PEN 0,35 - Marker pen

0811228

<https://www.phoenixcontact.com/in/products/0811228>



Marker pen without ink cartridge, for manual labeling of markers, labeling extremely wipe-proof, line thickness 0.35 mm

PT 2X2-BE - Surge protection base-element

2839208

<https://www.phoenixcontact.com/in/products/2839208>



B-STIFT - Marker pen

1051993

<https://www.phoenixcontact.com/in/products/1051993>



Marker pen, for manual labeling of unprinted Zack strips, smear-proof and waterproof, line thickness 0.5 mm

PT 2X2- 5DC-ST - Surge protection plug

2838241

<https://www.phoenixcontact.com/in/products/2838241>



PT protective connector with protective circuit for two 2-wire floating signal circuits. 5 V DC nominal voltage. HART-compatible.

PT 2X2-BE - Surge protection base-element

2839208

<https://www.phoenixcontact.com/in/products/2839208>



PT 2X2-12AC-ST - Surge protection plug

2838270

<https://www.phoenixcontact.com/in/products/2838270>



Surge protection plug for the base element, for two floating double wires, common mode voltage coarse protection to ground. 12 V AC nominal voltage. HART-compatible.

PT 2X2-12DC-ST - Surge protection plug

2838254

<https://www.phoenixcontact.com/in/products/2838254>



PT protective connector with protective circuit for two 2-wire floating signal circuits. 12 V DC nominal voltage. HART-compatible.

PT 2X2-BE - Surge protection base-element

2839208

<https://www.phoenixcontact.com/in/products/2839208>



PT 2X2-24AC-ST - Surge protection plug

2838283

<https://www.phoenixcontact.com/in/products/2838283>



PT protective connector with protective circuit for two 2-wire floating signal circuits. 24 V AC nominal voltage. HART-compatible.

PT 2X2-24DC-ST - Surge protection plug

2838228

<https://www.phoenixcontact.com/in/products/2838228>



PT protective connector with protective circuit for two 2-wire floating signal circuits. 24 V DC nominal voltage. HART-compatible.

PT 2X2-BE - Surge protection base-element

2839208

<https://www.phoenixcontact.com/in/products/2839208>

PT 2X2-HF-12 DC-ST - Surge protection plug

2839570

<https://www.phoenixcontact.com/in/products/2839570>



Surge protection plug for the base element, normal mode voltage coarse and fine protection for two floating double wires in IT. Design: 12 V DC

PT 2X2-HF-24 DC-ST - Surge protection plug

2839729

<https://www.phoenixcontact.com/in/products/2839729>



Protective plug PT with HF protective circuit for two 2-core floating signal circuits. Nominal voltage: 24 V DC

PT 2X2-BE - Surge protection base-element



2839208

<https://www.phoenixcontact.com/in/products/2839208>

PT 5-HF- 5 DC-ST - Surge protection plug

2838762

<https://www.phoenixcontact.com/in/products/2838762>



Protective plug PT with HF protective circuit for 4 signal wires. Nominal voltage:
5 V DC

PT 5-HF-12 DC-ST - Surge protection plug

2838775

<https://www.phoenixcontact.com/in/products/2838775>



Protective plug PT with HF protective circuit for 4 signal wires. Nominal voltage:
12 V DC

Phoenix Contact 2023 © - all rights reserved
<https://www.phoenixcontact.com>

PHOENIX CONTACT (I) Pvt. Ltd.
A-58/2, Okhla Industrial Area, Phase - II, New Delhi-110 020

+91.1275.71420
info@phoenixcontact.co.in