

# TB 2,5 EI - Feed-through terminal block



3246010

<https://www.phoenixcontact.com/in/products/3246010>

Please be informed that the data shown in this PDF document is generated from our Online Catalog. Please find the complete data in the user documentation. Our General Terms of Use for Downloads are valid.



Feed-through terminal block, nom. voltage: 800 V, nominal current: 24 A, number of connections: 2, connection method: Screw connection, Rated cross section: 2.5 mm<sup>2</sup>, cross section: 0.5 mm<sup>2</sup> - 4 mm<sup>2</sup>, mounting type: NS 35/7,5, NS 35/15, NS 32, color: dark gray

## Commercial Data

|                                      |               |
|--------------------------------------|---------------|
| Item number                          | 3246010       |
| Packing unit                         | 50 pc         |
| Minimum order quantity               | 50 pc         |
| Sales Key                            | BE1           |
| Product Key                          | BE1411        |
| GTIN                                 | 4046356599658 |
| Weight per Piece (including packing) | 5.988 g       |
| Weight per Piece (excluding packing) | 5.988 g       |
| Customs tariff number                | 25093400      |
| Country of origin                    | IN            |

# TB 2,5 EI - Feed-through terminal block



3246010

<https://www.phoenixcontact.com/in/products/3246010>

## Technical Data

### Product properties

|                       |                             |
|-----------------------|-----------------------------|
| Product type          | Feed-through terminal block |
| Number of connections | 2                           |
| Number of rows        | 1                           |
| Potentials            | 1                           |

### Insulation characteristics

|                      |     |
|----------------------|-----|
| Overvoltage category | III |
| Degree of pollution  | 3   |

### Electrical properties

|   |        |
|---|--------|
| Rated surge voltage                             | 8 kV   |
| Maximum power dissipation for nominal condition | 0.77 W |

### Connection data

|                                 |   |
|---------------------------------|---|
| Number of connections per level | 2 |
|---------------------------------|---|

#### Level 1 above 1 below 1

|   |   |
|---|---|
| Screw thread  | M2,5  |
| Tightening torque   | 0.4 ... 0.5 Nm  |
| Stripping length  | 7 mm  |
| Internal cylindrical gage   | A3  |
| Connection in acc. with standard  | IEC 60947-7-1   |
| Conductor cross section rigid   | 0.5 mm <sup>2</sup> ... 4 mm <sup>2</sup>             |
| Cross section AWG   | 20 ... 12 (converted acc. to IEC)                     |
| Conductor cross section flexible  | 0.5 mm <sup>2</sup> ... 2.5 mm <sup>2</sup>           |
| Conductor cross section, flexible [AWG]   | 20 ... 14 (converted acc. to IEC)                     |
| Conductor cross-section flexible (ferrule without plastic sleeve)                   | 0.5 mm <sup>2</sup> ... 2.5 mm <sup>2</sup>           |
| Flexible conductor cross section (ferrule with plastic sleeve)                      | 0.5 mm <sup>2</sup> ... 1.5 mm <sup>2</sup>           |
| 2 conductors with same cross section, solid   | 0.5 mm <sup>2</sup> ... 0.75 mm <sup>2</sup>          |
| 2 conductors with the same cross-section AWG rigid                                  | 20 ... 18 (converted acc. to IEC)                     |
| 2 conductors with same cross section, flexible                                      | 0.5 mm <sup>2</sup> ... 1.5 mm <sup>2</sup>           |
| 2 conductors with the same cross-section AWG flexible                               | 20 ... 16 (converted acc. to IEC)                     |
| 2 conductors with same cross section, flexible, with ferrule without plastic sleeve | 0.5 mm <sup>2</sup> ... 1 mm <sup>2</sup>             |
| Nominal current   | 24 A (With 4 mm <sup>2</sup> conductor cross section) |
| Maximum load current  | 24 A (with 4 mm <sup>2</sup> conductor cross-section) |
| Nominal voltage   | 800 V (630 V for 4 mm <sup>2</sup> connection)        |
| Note  | Checked at 1100 V                                     |
| Nominal cross section   | 2.5 mm <sup>2</sup>                                   |

### Dimensions

|       |        |
|-------|--------|
| Width | 5.2 mm |
|-------|--------|

# TB 2,5 EI - Feed-through terminal block



3246010

<https://www.phoenixcontact.com/in/products/3246010>

|                  |         |
|------------------|---------|
| End cover width  | 1.5 mm  |
| Height NS 35/15  | 49.5 mm |
| Height NS 35/7,5 | 42 mm   |
| Height           | 1.654 " |
| Height NS 32     | 47 mm   |
| Length           | 42.5 mm |

## Material specifications

|   |           |
|---|-----------|
| Color   | dark gray |
| Flammability rating according to UL 94                                  | V2        |
| Insulating material group   | I         |
| Insulating material   | PA        |
| Temperature index of insulation material (DIN EN 60216-1 (VDE 0304-21)) | 125 °C    |
| Relative insulation material temperature index (Elec., UL 746 B)        | 125 °C    |

## Electrical tests

### Surge voltage test

|                       |             |
|-----------------------|-------------|
| Test voltage setpoint | 9.8 kV      |
| Result                | Test passed |

### Temperature-rise test

|  |                                     |
|--|-------------------------------------|
| Requirement temperature-rise test                | Increase in temperature $\leq 45$ K |
| Result   | Test passed                         |
| Short-time withstand current 2.5 mm <sup>2</sup> | 0.3 kA                              |
| Result   | Test passed                         |

### Power-frequency withstand voltage

|                       |             |
|-----------------------|-------------|
| Test voltage setpoint | 2 kV        |
| Result                | Test passed |

## Mechanical properties

### Mechanical data

|                 |     |
|-----------------|-----|
| Open side panel | Yes |
|-----------------|-----|

## Mechanical tests

### Mechanical strength

|        |             |
|--------|-------------|
| Result | Test passed |
|--------|-------------|

### Attachment on the carrier

|                         |             |
|-------------------------|-------------|
| DIN rail/fixing support | NS 32/NS 35 |
| Test force setpoint     | 1 N         |
| Result                  | Test passed |

### Test for conductor damage and slackening

# TB 2,5 EI - Feed-through terminal block



3246010

<https://www.phoenixcontact.com/in/products/3246010>

|                                |                              |
|--------------------------------|------------------------------|
| Rotation speed                 | 10 rpm                       |
| Revolutions                    | 135                          |
| Conductor cross section/weight | 0.5 mm <sup>2</sup> / 0.3 kg |
|                                | 2.5 mm <sup>2</sup> / 0.7 kg |
|                                | 4 mm <sup>2</sup> / 0.9 kg   |
| Result                         | Test passed                  |

## Environmental and real-life conditions

### Needle-flame test

|                  |             |
|------------------|-------------|
| Time of exposure | 30 s        |
| Result           | Test passed |

### Ambient conditions

|  |   |
|--|---|
| Ambient temperature (operation)          | -60 °C ... 105 °C (max. short-term operating temperature RTI Elec.)       |
| Ambient temperature (storage/transport)  | -25 °C ... 60 °C (for a short time, not exceeding 24 h, -60 °C to +70 °C) |
| Ambient temperature (assembly)           | -5 °C ... 70 °C   |
| Ambient temperature (actuation)          | -5 °C ... 70 °C   |
| Permissible humidity (storage/transport) | 30 % ... 70 %   |

## Standards and regulations

|                                  |               |
|----------------------------------|---------------|
| Connection in acc. with standard | IEC 60947-7-1 |
|----------------------------------|---------------|

## Mounting

|               |           |
|---------------|-----------|
| Mounting type | NS 35/7,5 |
|               | NS 35/15  |
|               | NS 32     |

# TB 2,5 EI - Feed-through terminal block

3246010

<https://www.phoenixcontact.com/in/products/3246010>



## Drawings

### Circuit diagram




# TB 2,5 EI - Feed-through terminal block



3246010

<https://www.phoenixcontact.com/in/products/3246010>

## Approvals

|  <b>cULus Recognized</b><br>Approval ID: E60425 |                       |                       |                   |                             |
|--|-----------------------|-----------------------|-------------------|-----------------------------|
|  | Nominal Voltage $U_N$ | Nominal Current $I_N$ | Cross Section AWG | Cross Section $\text{mm}^2$ |
|  | 300 V                 | 20 A                  | 20 - 12           | -                           |
|  | 300 V                 | 20 A                  | 20 - 12           | -                           |
|  | 600 V                 | 5 A                   | 20 - 12           | -                           |

# TB 2,5 EI - Feed-through terminal block



3246010

<https://www.phoenixcontact.com/in/products/3246010>

## Classifications

### ECLASS

ECLASS-11.0

27141120

### ETIM

ETIM 7.0

EC000897

### UNSPSC

UNSPSC 21.0

39121410

# TB 2,5 EI - Feed-through terminal block



3246010

<https://www.phoenixcontact.com/in/products/3246010>

## Environmental Product Compliance

|            |   |
|------------|---|
| China RoHS | Environmentally friendly use period: unlimited = EFUP-e<br>No hazardous substances above threshold values |
|------------|---|



# TB 2,5 EI - Feed-through terminal block

3246010

<https://www.phoenixcontact.com/in/products/3246010>

## Accessories

 Note: Applying some accessories below might limit this product.


### SCBI 10-5 N - Screw bridge

3246117

<https://www.phoenixcontact.com/in/products/3246117>



Screw bridge, with insulating collar, number of positions: 10, color: silver

 Max. current carrying capacity: 22 A

### INB 10-5 - Insertion bridge

3246175

<https://www.phoenixcontact.com/in/products/3246175>



Insertion bridge, Bridging in the terminal point, pitch: 5 mm, number of positions: 10, color: gray

# TB 2,5 EI - Feed-through terminal block

3246010

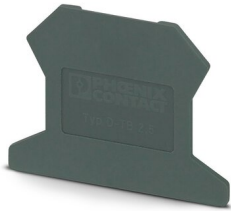
<https://www.phoenixcontact.com/in/products/3246010>

## D-TB 2,5 E - End cover

3246094

<https://www.phoenixcontact.com/in/products/3246094>

End cover, length: 42.5 mm, width: 1.5 mm, height: 30.7 mm, color: dark gray



---

## TS-TB-2L - Separating plate

3062841

<https://www.phoenixcontact.com/in/products/3062841>

Separating plate, for electrical isolation of neighboring bridges in the terminal center, length: 16 mm, width: 0.5 mm, height: 14 mm, color: dark gray



# TB 2,5 EI - Feed-through terminal block

3246010

<https://www.phoenixcontact.com/in/products/3246010>



## ATP-TB - Partition plate

3046272

<https://www.phoenixcontact.com/in/products/3046272>



Partition plate, length: 56 mm, width: 3 mm, height: 45.7 mm, color: dark gray

---

## TPS 3/10/4 - Female test connector

3246230

<https://www.phoenixcontact.com/in/products/3246230>



Female test connector, for 2.3 mm test plugs, for screwing into the bridge shaft, number of positions: 1, fuse type: , mounting type: , , color: silver

# TB 2,5 EI - Feed-through terminal block

3246010

<https://www.phoenixcontact.com/in/products/3246010>



## SZS 0,6X3,5 VDE - Screwdriver

1212602

<https://www.phoenixcontact.com/in/products/1212602>



Screwdriver, slot-headed, VDE insulated, size: 0.6 x 3.5 x 100 mm, 2-component grip, with non-slip grip

---

## E/TB - End clamp

3246966

<https://www.phoenixcontact.com/in/products/3246966>



End clamp, for assembly on NS 32 or NS 35/7.5 DIN rail

# TB 2,5 EI - Feed-through terminal block

3246010

<https://www.phoenixcontact.com/in/products/3246010>



## NS 32 PERF 2000MM-VPE 10 - DIN rail perforated

1201002

<https://www.phoenixcontact.com/in/products/1201002>



DIN rail perforated, acc. to EN 60715, material: Steel, galvanized, passivated with a thick layer, G profile, color: silver, Pack of 10 (20 m)

---

## NS 32 UNPERF 2000MM-VPE 10 - DIN rail, unperforated

1201015

<https://www.phoenixcontact.com/in/products/1201015>



DIN rail, unperforated, acc. to EN 60715, material: Steel, galvanized, passivated with a thick layer, G profile, color: silver, Pack of 10 (20 m)

# TB 2,5 EI - Feed-through terminal block

3246010

<https://www.phoenixcontact.com/in/products/3246010>



## MPS-MT - Test plugs

0201744

<https://www.phoenixcontact.com/in/products/0201744>



Test plugs, with solder connection up to 1 mm<sup>2</sup> conductor cross section, number of positions: 1, fuse type: , mounting type: , , color: gray

---

## MPS-IH WH - Insulating sleeve

0201663

<https://www.phoenixcontact.com/in/products/0201663>

Insulating sleeve, fuse type: , mounting type: , , color: white



# TB 2,5 EI - Feed-through terminal block

3246010

<https://www.phoenixcontact.com/in/products/3246010>



## MPS-IH RD - Insulating sleeve

0201676

<https://www.phoenixcontact.com/in/products/0201676>

Insulating sleeve, fuse type: , mounting type: , , color: red



---

## MPS-IH BU - Insulating sleeve

0201689

<https://www.phoenixcontact.com/in/products/0201689>

Insulating sleeve, fuse type: , mounting type: , , color: blue



# TB 2,5 EI - Feed-through terminal block

3246010

<https://www.phoenixcontact.com/in/products/3246010>



## MPS-IH YE - Insulating sleeve

0201692

<https://www.phoenixcontact.com/in/products/0201692>

Insulating sleeve, fuse type: , mounting type: , , color: yellow



---

## MPS-IH GN - Insulating sleeve

0201702

<https://www.phoenixcontact.com/in/products/0201702>

Insulating sleeve, fuse type: , mounting type: , , color: green





# TB 2,5 EI - Feed-through terminal block

3246010

<https://www.phoenixcontact.com/in/products/3246010>



## MPS-IH GY - Insulating sleeve

0201728

<https://www.phoenixcontact.com/in/products/0201728>

Insulating sleeve, fuse type: , mounting type: , , color: gray



---

## MPS-IH BK - Insulating sleeve

0201731

<https://www.phoenixcontact.com/in/products/0201731>

Insulating sleeve, fuse type: , mounting type: , , color: black



# TB 2,5 EI - Feed-through terminal block

3246010

<https://www.phoenixcontact.com/in/products/3246010>

## ZB 5 :UNBEDRUCKT - Zack marker strip

1050004

<https://www.phoenixcontact.com/in/products/1050004>



Zack marker strip, Strip, white, unlabeled, can be labeled with: PLOTMARK, CMS-P1-PLOTTER, mounting type: snapped, for terminal block width: 5.2 mm, lettering field size: 5.1 x 10.5 mm, Number of individual labels: 10

---

## ZB 5 CUS - Zack marker strip

0824962

<https://www.phoenixcontact.com/in/products/0824962>



Zack marker strip, can be ordered: Strip, white, labeled according to customer specifications, mounting type: snap into tall marker groove, for terminal block width: 5.2 mm, lettering field size: 5.15 x 10.5 mm, Number of individual labels: 10

# TB 2,5 EI - Feed-through terminal block

3246010

<https://www.phoenixcontact.com/in/products/3246010>

## ZB 5,LGS:FORTL.ZAHLEN - Zack marker strip

1050017

<https://www.phoenixcontact.com/in/products/1050017>



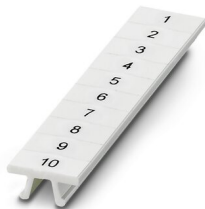
Zack marker strip, Strip, white, labeled, printed horizontally: consecutive numbers 1 ... 10, 11 ... 20, etc. up to 491 ... 500, mounting type: snapped, for terminal block width: 5.2 mm, lettering field size: 5.15 x 10.5 mm, Number of individual labels: 10

---

## ZB 5,QR:FORTL.ZAHLEN - Zack marker strip

1050020

<https://www.phoenixcontact.com/in/products/1050020>



Zack marker strip, white, Printed vertically: consecutive numbers 1 ... 10, 11 ... 20, etc. up to 491 ... 500, mounting type: snapped, for terminal block width: 5.2 mm, lettering field size: 5.15 x 10.5 mm

# TB 2,5 EI - Feed-through terminal block

3246010

<https://www.phoenixcontact.com/in/products/3246010>



## ZB 5,LGS:GLEICHE ZAHLEN - Zack marker strip

1050033

<https://www.phoenixcontact.com/in/products/1050033>



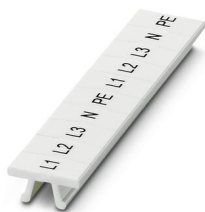
Zack marker strip, Strip, white, labeled, can be labeled with: CMS-P1-PLOTTER, printed horizontally: Identical numbers 1 or 2, etc. up to 100, mounting type: snapped, for terminal block width: 5.2 mm, lettering field size: 5.15 x 10.5 mm, Number of individual labels: 10

---

## ZB 5,LGS:L1-N,PE - Zack marker strip

1050415

<https://www.phoenixcontact.com/in/products/1050415>



Zack marker strip, Strip, white, labeled, horizontal: L1, L2, L3, N, PE, L1, L2, L3, N, PE, mounting type: snapped, for terminal block width: 5.2 mm, lettering field size: 5.15 x 10.5 mm, Number of individual labels: 10

# TB 2,5 EI - Feed-through terminal block

3246010

<https://www.phoenixcontact.com/in/products/3246010>



## UC-TM 5 - Marker for terminal blocks

0818108

<https://www.phoenixcontact.com/in/products/0818108>



Marker for terminal blocks, Sheet, white, unlabeled, can be labeled with: BLUEMARK ID COLOR, BLUEMARK ID, BLUEMARK CLED, PLOTMARK, CMS-P1-PLOTTER, mounting type: snapped, for terminal block width: 5.2 mm, lettering field size: 4.6 x 10.5 mm, Number of individual labels: 96

---

## UC-TM 5 CUS - Marker for terminal blocks

0824581

<https://www.phoenixcontact.com/in/products/0824581>



Marker for terminal blocks, can be ordered: by sheet, white, labeled according to customer specifications, mounting type: snap into tall marker groove, for terminal block width: 5.2 mm, lettering field size: 10.5 x 4.6 mm, Number of individual labels: 96

# TB 2,5 EI - Feed-through terminal block

3246010

<https://www.phoenixcontact.com/in/products/3246010>



## UCT-TM 5 - Marker for terminal blocks

0828734

<https://www.phoenixcontact.com/in/products/0828734>



Marker for terminal blocks, Sheet, white, unlabeled, can be labeled with: TOPMARK NEO, TOPMARK LASER, BLUEMARK ID COLOR, BLUEMARK ID, BLUEMARK CLED, THERMOMARK PRIME, THERMOMARK CARD 2.0, THERMOMARK CARD, mounting type: snapped, for terminal block width: 5.2 mm, lettering field size: 4.6 x 10.5 mm, Number of individual labels: 72

---

## UCT-TM 5 CUS - Marker for terminal blocks

0829595

<https://www.phoenixcontact.com/in/products/0829595>



Marker for terminal blocks, can be ordered: by sheet, white, labeled according to customer specifications, mounting type: snap into tall marker groove, for terminal block width: 5.2 mm, lettering field size: 4.6 x 10.5 mm, Number of individual labels: 72

# TB 2,5 EI - Feed-through terminal block

3246010

<https://www.phoenixcontact.com/in/products/3246010>

## GBS 5-25X12 - Group marker label for terminal marking

0810588

<https://www.phoenixcontact.com/in/products/0810588>



Group marker label, snaps onto terminal center for screw, spring-cage and quick connection terminal blocks, labeled with a 25 x 12 mm label or manually with the B-STIFT, in the foot part with ZB 5

---

## GBS 5-25X5 - Group marker label for terminal marking

0829126

<https://www.phoenixcontact.com/in/products/0829126>



Group marking label, can be snapped into terminal center for screw, spring-cage, push-in, and fast connection terminal blocks, can be labeled with a 24 x 4 mm label or manually using B-STIFT, in the foot part with ZB 5

# TB 2,5 EI - Feed-through terminal block



3246010

<https://www.phoenixcontact.com/in/products/3246010>

## STP 5-2-ZB - Marker carriers

3037643

<https://www.phoenixcontact.com/in/products/3037643>



Marker carriers, snaps into ST 2,5 spring-cage terminal blocks, can be marked with UC-TM 5, UC-TMF 5, UCT-TM 5, UCT-TMF 5, ZB 5, or ZBF 5, gray, unlabeled, mounting type: plug in

---

Phoenix Contact 2023 © - all rights reserved

<https://www.phoenixcontact.com>

PHOENIX CONTACT (I) Pvt. Ltd.

A-58/2, Okhla Industrial Area, Phase - II, New Delhi-110 020

+91.1275.71420

[info@phoenixcontact.co.in](mailto:info@phoenixcontact.co.in)