

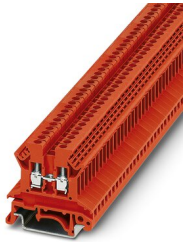
TB 2,5 EI RD - Feed-through terminal block



3000849

<https://www.phoenixcontact.com/in/products/3000849>

Please be informed that the data shown in this PDF document is generated from our Online Catalog. Please find the complete data in the user documentation. Our General Terms of Use for Downloads are valid.



Feed-through terminal block, nom. voltage: 800 V, nominal current: 20 A, number of connections: 2, connection method: Screw connection, cross section: 0.5 mm² - 4 mm², mounting type: NS 35/7,5, NS 35/15, NS 32, color: red

Commercial Data

Item number	3000849
Packing unit	50 pc
Minimum order quantity	50 pc
Sales Key	BE1
Product Key	BE1411
GTIN	4055626319155
Weight per Piece (including packing)	22.22 g
Weight per Piece (excluding packing)	22.22 g
Customs tariff number	39269098
Country of origin	IN

TB 2,5 EI RD - Feed-through terminal block



3000849

<https://www.phoenixcontact.com/in/products/3000849>

Technical Data

Product properties

Product type	Feed-through terminal block
Number of connections	2
Number of rows	1
Potentials	1

Insulation characteristics

Overvoltage category	III
Degree of pollution	3

Electrical properties

Rated surge voltage	8 kV
Maximum power dissipation for nominal condition	0.77 W

Connection data

Number of connections per level	2
---------------------------------	---

Level 1 above 1 below 1

Screw thread	M2,5
Tightening torque	0.4 ... 0.5 Nm
Stripping length	7 mm
Internal cylindrical gage	A3
Connection in acc. with standard	IEC 60947-7-1
Conductor cross section rigid	0.5 mm ² ... 4 mm ²
Cross section AWG	20 ... 12 (converted acc. to IEC)
Conductor cross section flexible	0.5 mm ² ... 2.5 mm ²
Conductor cross section, flexible [AWG]	20 ... 14 (converted acc. to IEC)
Conductor cross-section flexible (ferrule without plastic sleeve)	0.5 mm ² ... 2.5 mm ²
Flexible conductor cross section (ferrule with plastic sleeve)	0.5 mm ² ... 1.5 mm ²
2 conductors with same cross section, solid	0.5 mm ² ... 0.75 mm ²
2 conductors with the same cross-section AWG rigid	20 ... 18 (converted acc. to IEC)
2 conductors with same cross section, flexible	0.5 mm ² ... 1.5 mm ²
2 conductors with the same cross-section AWG flexible	20 ... 16 (converted acc. to IEC)
2 conductors with same cross section, flexible, with ferrule without plastic sleeve	0.5 mm ² ... 1 mm ²
Nominal current	20 A
Maximum load current	24 A
Nominal voltage	800 V

Dimensions

Width	5.2 mm
End cover width	1.5 mm
Height NS 35/15	49.5 mm

TB 2,5 EI RD - Feed-through terminal block



3000849

<https://www.phoenixcontact.com/in/products/3000849>

Height NS 35/7,5	42 mm
Height	1.654 "
Height NS 32	47 mm
Length	42.5 mm

Material specifications

Color	red
Flammability rating according to UL 94	V2
Insulating material group	I
Insulating material	PA
Temperature index of insulation material (DIN EN 60216-1 (VDE 0304-21))	125 °C
Relative insulation material temperature index (Elec., UL 746 B)	125 °C

Electrical tests

Surge voltage test

Test voltage setpoint	9.8 kV
Result	Test passed

Temperature-rise test

Requirement temperature-rise test	Increase in temperature ≤ 45 K
Result	Test passed
Short-time withstand current 2.5 mm ²	0.3 kA
Result	Test passed

Power-frequency withstand voltage

Test voltage setpoint	2 kV
Result	Test passed

Mechanical properties

Mechanical data

Open side panel	Yes
-----------------	-----

Mechanical tests

Mechanical strength

Result	Test passed
--------	-------------

Attachment on the carrier

DIN rail/fixing support	NS 32/NS 35
Test force setpoint	1 N
Result	Test passed

Test for conductor damage and slackening

Rotation speed	10 rpm
Revolutions	135

TB 2,5 EI RD - Feed-through terminal block



3000849

<https://www.phoenixcontact.com/in/products/3000849>

Conductor cross section/weight	0.5 mm ² / 0.3 kg
	2.5 mm ² / 0.7 kg
	4 mm ² / 0.9 kg
Result	Test passed

Environmental and real-life conditions

Needle-flame test

Time of exposure	30 s
Result	Test passed

Ambient conditions

Ambient temperature (operation)	-60 °C ... 105 °C (max. short-term operating temperature RTI Elec.)
Ambient temperature (storage/transport)	-25 °C ... 60 °C (for a short time, not exceeding 24 h, -60 °C to +70 °C)
Ambient temperature (assembly)	-5 °C ... 70 °C
Ambient temperature (actuation)	-5 °C ... 70 °C
Permissible humidity (storage/transport)	30 % ... 70 %

Standards and regulations

Connection in acc. with standard	IEC 60947-7-1
----------------------------------	---------------

Mounting

Mounting type	NS 35/7,5
	NS 35/15
	NS 32

TB 2,5 EI RD - Feed-through terminal block

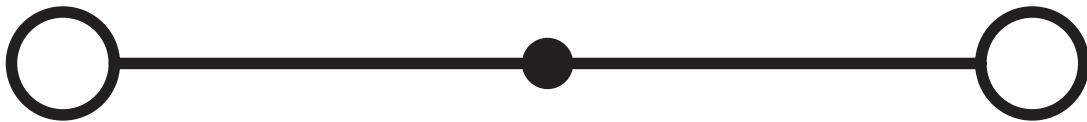
3000849

<https://www.phoenixcontact.com/in/products/3000849>



Drawings

Circuit diagram



TB 2,5 EI RD - Feed-through terminal block



3000849

<https://www.phoenixcontact.com/in/products/3000849>

Approvals



EAC

Approval ID: RU C-DE.A*30.B.01742



cULus Recognized

Approval ID: E60425

	Nominal Voltage U_N	Nominal Current I_N	Cross Section AWG	Cross Section mm^2
	300 V	20 A	30 - 12	-
	300 V	20 A	30 - 12	-
	600 V	5 A	30 - 12	-

TB 2,5 EI RD - Feed-through terminal block



3000849

<https://www.phoenixcontact.com/in/products/3000849>

Classifications

ECLASS

ECLASS-11.0

27141120

ETIM

ETIM 7.0

EC000897

UNSPSC

UNSPSC 21.0

39121410

TB 2,5 EI RD - Feed-through terminal block



3000849

<https://www.phoenixcontact.com/in/products/3000849>

Environmental Product Compliance

China RoHS	Environmentally friendly use period: unlimited = EFUP-e
	No hazardous substances above threshold values

TB 2,5 EI RD - Feed-through terminal block

3000849

<https://www.phoenixcontact.com/in/products/3000849>

Accessories

SCBI 10-5 N - Screw bridge

3246117

<https://www.phoenixcontact.com/in/products/3246117>

Screw bridge, with insulating collar, number of positions: 10, color: silver



INB 10-5 - Insertion bridge

3246175

<https://www.phoenixcontact.com/in/products/3246175>

Insertion bridge, Bridging in the terminal point, pitch: 5 mm, number of positions: 10, color: gray



TB 2,5 EI RD - Feed-through terminal block



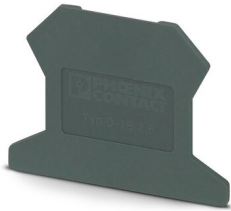
3000849

<https://www.phoenixcontact.com/in/products/3000849>

D-TB 2,5 E - End cover

3246094

<https://www.phoenixcontact.com/in/products/3246094>



End cover, length: 42.5 mm, width: 1.5 mm, height: 30.7 mm, color: dark gray

TS-TB-2L - Separating plate

3062841

<https://www.phoenixcontact.com/in/products/3062841>



Separating plate, for electrical isolation of neighboring bridges in the terminal center, length: 16 mm, width: 0.5 mm, height: 14 mm, color: dark gray

TB 2,5 EI RD - Feed-through terminal block

3000849

<https://www.phoenixcontact.com/in/products/3000849>



ATP-TB - Partition plate

3046272

<https://www.phoenixcontact.com/in/products/3046272>



Partition plate, length: 56 mm, width: 3 mm, height: 45.7 mm, color: dark gray

TPS 3/10/4 - Female test connector

3246230

<https://www.phoenixcontact.com/in/products/3246230>



Female test connector, for 2.3 mm test plugs, for screwing into the bridge shaft, number of positions: 1, fuse type: , mounting type: , , color: silver

TB 2,5 EI RD - Feed-through terminal block

3000849

<https://www.phoenixcontact.com/in/products/3000849>



SZS 0,6X3,5 VDE - Screwdriver

1212602

<https://www.phoenixcontact.com/in/products/1212602>

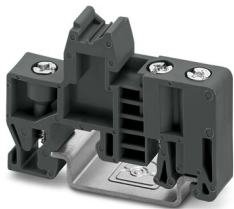


Screwdriver, slot-headed, VDE insulated, size: 0.6 x 3.5 x 100 mm, 2-component grip, with non-slip grip

E/TB - End clamp

3246966

<https://www.phoenixcontact.com/in/products/3246966>



End clamp, for assembly on NS 32 or NS 35/7.5 DIN rail

TB 2,5 EI RD - Feed-through terminal block

3000849

<https://www.phoenixcontact.com/in/products/3000849>



NS 32 PERF 2000MM-VPE 10 - DIN rail perforated

1201002

<https://www.phoenixcontact.com/in/products/1201002>



DIN rail perforated, acc. to EN 60715, material: Steel, galvanized, passivated with a thick layer, G profile, color: silver, Pack of 10 (20 m)

NS 32 UNPERF 2000MM-VPE 10 - DIN rail, unperforated

1201015

<https://www.phoenixcontact.com/in/products/1201015>



DIN rail, unperforated, acc. to EN 60715, material: Steel, galvanized, passivated with a thick layer, G profile, color: silver, Pack of 10 (20 m)

TB 2,5 EI RD - Feed-through terminal block

3000849

<https://www.phoenixcontact.com/in/products/3000849>



MPS-MT - Test plugs

0201744

<https://www.phoenixcontact.com/in/products/0201744>



Test plugs, with solder connection up to 1 mm² conductor cross section, number of positions: 1, fuse type: , mounting type: , , color: gray

MPS-IH WH - Insulating sleeve

0201663

<https://www.phoenixcontact.com/in/products/0201663>

Insulating sleeve, fuse type: , mounting type: , , color: white



TB 2,5 EI RD - Feed-through terminal block

3000849

<https://www.phoenixcontact.com/in/products/3000849>



MPS-IH RD - Insulating sleeve

0201676

<https://www.phoenixcontact.com/in/products/0201676>

Insulating sleeve, fuse type: , mounting type: , , color: red

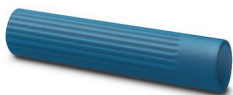


MPS-IH BU - Insulating sleeve

0201689

<https://www.phoenixcontact.com/in/products/0201689>

Insulating sleeve, fuse type: , mounting type: , , color: blue



TB 2,5 EI RD - Feed-through terminal block

3000849

<https://www.phoenixcontact.com/in/products/3000849>



MPS-IH YE - Insulating sleeve

0201692

<https://www.phoenixcontact.com/in/products/0201692>

Insulating sleeve, fuse type: , mounting type: , , color: yellow



MPS-IH GN - Insulating sleeve

0201702

<https://www.phoenixcontact.com/in/products/0201702>

Insulating sleeve, fuse type: , mounting type: , , color: green



TB 2,5 EI RD - Feed-through terminal block

3000849

<https://www.phoenixcontact.com/in/products/3000849>



MPS-IH GY - Insulating sleeve

0201728

<https://www.phoenixcontact.com/in/products/0201728>

Insulating sleeve, fuse type: , mounting type: , , color: gray



MPS-IH BK - Insulating sleeve

0201731

<https://www.phoenixcontact.com/in/products/0201731>

Insulating sleeve, fuse type: , mounting type: , , color: black



TB 2,5 EI RD - Feed-through terminal block

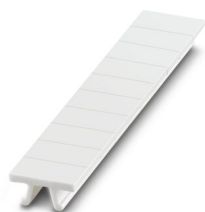
3000849

<https://www.phoenixcontact.com/in/products/3000849>

ZB 5 :UNBEDRUCKT - Zack marker strip

1050004

<https://www.phoenixcontact.com/in/products/1050004>



Zack marker strip, Strip, white, unlabeled, can be labeled with: PLOTMARK, CMS-P1-PLOTTER, mounting type: snapped, for terminal block width: 5.2 mm, lettering field size: 5.1 x 10.5 mm, Number of individual labels: 10

ZB 5 CUS - Zack marker strip

0824962

<https://www.phoenixcontact.com/in/products/0824962>



Zack marker strip, can be ordered: Strip, white, labeled according to customer specifications, mounting type: snap into tall marker groove, for terminal block width: 5.2 mm, lettering field size: 5.15 x 10.5 mm, Number of individual labels: 10

TB 2,5 EI RD - Feed-through terminal block



3000849

<https://www.phoenixcontact.com/in/products/3000849>

ZB 5,LGS:FORTL.ZAHLEN - Zack marker strip

1050017

<https://www.phoenixcontact.com/in/products/1050017>

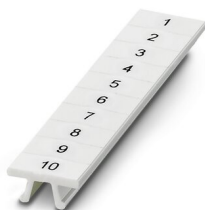


Zack marker strip, Strip, white, labeled, printed horizontally: consecutive numbers 1 ... 10, 11 ... 20, etc. up to 491 ... 500, mounting type: snapped, for terminal block width: 5.2 mm, lettering field size: 5.15 x 10.5 mm, Number of individual labels: 10

ZB 5,QR:FORTL.ZAHLEN - Zack marker strip

1050020

<https://www.phoenixcontact.com/in/products/1050020>



Zack marker strip, white, Printed vertically: consecutive numbers 1 ... 10, 11 ... 20, etc. up to 491 ... 500, mounting type: snapped, for terminal block width: 5.2 mm, lettering field size: 5.15 x 10.5 mm

TB 2,5 EI RD - Feed-through terminal block

3000849

<https://www.phoenixcontact.com/in/products/3000849>



ZB 5,LGS:GLEICHE ZAHLEN - Zack marker strip

1050033

<https://www.phoenixcontact.com/in/products/1050033>

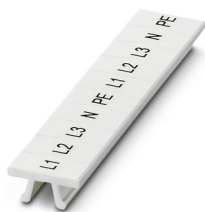


Zack marker strip, Strip, white, labeled, can be labeled with: CMS-P1-PLOTTER, printed horizontally: Identical numbers 1 or 2, etc. up to 100, mounting type: snapped, for terminal block width: 5.2 mm, lettering field size: 5.15 x 10.5 mm, Number of individual labels: 10

ZB 5,LGS:L1-N,PE - Zack marker strip

1050415

<https://www.phoenixcontact.com/in/products/1050415>



Zack marker strip, Strip, white, labeled, horizontal: L1, L2, L3, N, PE, L1, L2, L3, N, PE, mounting type: snapped, for terminal block width: 5.2 mm, lettering field size: 5.15 x 10.5 mm, Number of individual labels: 10

TB 2,5 EI RD - Feed-through terminal block

3000849

<https://www.phoenixcontact.com/in/products/3000849>



UC-TM 5 - Marker for terminal blocks

0818108

<https://www.phoenixcontact.com/in/products/0818108>



Marker for terminal blocks, Sheet, white, unlabeled, can be labeled with: BLUEMARK ID COLOR, BLUEMARK ID, BLUEMARK CLED, PLOTMARK, CMS-P1-PLOTTER, mounting type: snapped, for terminal block width: 5.2 mm, lettering field size: 4.6 x 10.5 mm, Number of individual labels: 96

UC-TM 5 CUS - Marker for terminal blocks

0824581

<https://www.phoenixcontact.com/in/products/0824581>



Marker for terminal blocks, can be ordered: by sheet, white, labeled according to customer specifications, mounting type: snap into tall marker groove, for terminal block width: 5.2 mm, lettering field size: 10.5 x 4.6 mm, Number of individual labels: 96

TB 2,5 EI RD - Feed-through terminal block

3000849

<https://www.phoenixcontact.com/in/products/3000849>



UCT-TM 5 - Marker for terminal blocks

0828734

<https://www.phoenixcontact.com/in/products/0828734>



Marker for terminal blocks, Sheet, white, unlabeled, can be labeled with: TOPMARK NEO, TOPMARK LASER, BLUEMARK ID COLOR, BLUEMARK ID, BLUEMARK CLED, THERMOMARK PRIME, THERMOMARK CARD 2.0, THERMOMARK CARD, mounting type: snapped, for terminal block width: 5.2 mm, lettering field size: 4.6 x 10.5 mm, Number of individual labels: 72

UCT-TM 5 CUS - Marker for terminal blocks

0829595

<https://www.phoenixcontact.com/in/products/0829595>



Marker for terminal blocks, can be ordered: by sheet, white, labeled according to customer specifications, mounting type: snap into tall marker groove, for terminal block width: 5.2 mm, lettering field size: 4.6 x 10.5 mm, Number of individual labels: 72

TB 2,5 EI RD - Feed-through terminal block

3000849

<https://www.phoenixcontact.com/in/products/3000849>

GBS 5-25X12 - Group marker label for terminal marking

0810588

<https://www.phoenixcontact.com/in/products/0810588>



Group marker label, snaps onto terminal center for screw, spring-cage and quick connection terminal blocks, labeled with a 25 x 12 mm label or manually with the B-STIFT, in the foot part with ZB 5

GBS 5-25X5 - Group marker label for terminal marking

0829126

<https://www.phoenixcontact.com/in/products/0829126>



Group marking label, can be snapped into terminal center for screw, spring-cage, push-in, and fast connection terminal blocks, can be labeled with a 24 x 4 mm label or manually using B-STIFT, in the foot part with ZB 5

TB 2,5 EI RD - Feed-through terminal block



3000849

<https://www.phoenixcontact.com/in/products/3000849>

STP 5-2-ZB - Marker carriers

3037643

<https://www.phoenixcontact.com/in/products/3037643>



Marker carriers, snaps into ST 2,5 spring-cage terminal blocks, can be marked with UC-TM 5, UC-TMF 5, UCT-TM 5, UCT-TMF 5, ZB 5, or ZBF 5, gray, unlabeled, mounting type: plug in

Phoenix Contact 2023 © - all rights reserved

<https://www.phoenixcontact.com>

PHOENIX CONTACT (I) Pvt. Ltd.

A-58/2, Okhla Industrial Area, Phase - II, New Delhi-110 020

+91.1275.71420

info@phoenixcontact.co.in