

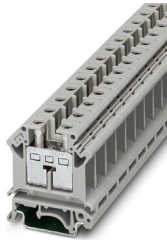
UIK 16 - Installation terminal block



3006153

<https://www.phoenixcontact.com/in/products/3006153>

Please be informed that the data shown in this PDF document is generated from our Online Catalog. Please find the complete data in the user documentation. Our General Terms of Use for Downloads are valid.



Installation terminal block, nom. voltage: 400 V, nominal current: 76 A, Screw connection, Rated cross section: 16 mm², cross section: 2.5 mm² - 25 mm², mounting type: NS 35/7,5, NS 35/15, NS 32, color: gray

Your advantages

- Installation terminal blocks with a particularly low-profile design for use in flat distributors
- The asymmetrical arrangement of the terminal blocks on the DIN rail enables the neutral busbar to be routed past the terminal blocks

Commercial Data

Item number	3006153
Packing unit	50 pc
Minimum order quantity	50 pc
Sales Key	BE1
Product Key	BE1251
Catalog Page	Page 505 (C-1-2017)
GTIN	4017918091378
Weight per Piece (including packing)	22.69 g
Weight per Piece (excluding packing)	20.919 g
Customs tariff number	25093400
Country of origin	IN

UIK 16 - Installation terminal block



3006153

<https://www.phoenixcontact.com/in/products/3006153>

Technical Data

Product properties

Product type	Installation terminal block
Number of connections	2
Number of rows	1
Potentials	1

Insulation characteristics

Overvoltage category	III
Degree of pollution	3

Electrical properties

Rated surge voltage	6 kV
Maximum power dissipation for nominal condition	2.43 W

Connection data

Number of connections per level	2
Nominal cross section	16 mm ²

Level 1 above 1 below 1

Screw thread	M4
Tightening torque	1.5 ... 1.8 Nm
Stripping length	11 mm
Internal cylindrical gage	A7
Connection in acc. with standard	IEC 60947-7-1
Conductor cross section rigid	2.5 mm ² ... 25 mm ²
Cross section AWG	12 ... 4 (converted acc. to IEC)
Conductor cross section flexible	4 mm ² ... 16 mm ²
Conductor cross section, flexible [AWG]	12 ... 6 (converted acc. to IEC)
Conductor cross-section flexible (ferrule without plastic sleeve)	1.5 mm ² ... 16 mm ²
Flexible conductor cross section (ferrule with plastic sleeve)	1.5 mm ² ... 16 mm ²
Cross-section with insertion bridge, rigid	16 mm ²
Cross-section with insertion bridge, flexible	16 mm ²
2 conductors with same cross section, solid	1.5 mm ² ... 6 mm ²
2 conductors with same cross section, flexible	1.5 mm ² ... 6 mm ²
2 conductors with same cross section, flexible, with ferrule without plastic sleeve	1.5 mm ² ... 4 mm ²
2 conductors with the same cross section, flexible, with TWIN ferrule with plastic sleeve	0.75 mm ² ... 10 mm ²
Nominal current	76 A
Maximum load current	101 A (with 25 mm ² conductor cross section)
Nominal voltage	400 V
Nominal cross section	16 mm ²

UIK 16 - Installation terminal block



3006153

<https://www.phoenixcontact.com/in/products/3006153>

Dimensions

Width	12.2 mm
End cover width	1.8 mm
Height NS 35/15	54.5 mm
Height NS 35/7,5	47 mm
Height	1.85 "
Height NS 32	52 mm
Length	42.5 mm

Material specifications

Color	gray
Flammability rating according to UL 94	V0
Insulating material group	I
Insulating material	PA
Static insulating material application in cold	-60 °C
Temperature index of insulation material (DIN EN 60216-1 (VDE 0304-21))	130 °C
Relative insulation material temperature index (Elec., UL 746 B)	130 °C
Fire protection for rail vehicles (DIN EN 45545-2) R22	HL 1 - HL 3
Fire protection for rail vehicles (DIN EN 45545-2) R23	HL 1 - HL 3
Fire protection for rail vehicles (DIN EN 45545-2) R24	HL 1 - HL 3
Fire protection for rail vehicles (DIN EN 45545-2) R26	HL 1 - HL 3
Calorimetric heat release NFPA 130 (ASTM E 1354)	28 MJ/kg
Surface flammability NFPA 130 (ASTM E 162)	passed
Specific optical density of smoke NFPA 130 (ASTM E 662)	passed
Smoke gas toxicity NFPA 130 (SMP 800C)	passed

Electrical tests

Surge voltage test

Result	Test passed
--------	-------------

Temperature-rise test

Requirement temperature-rise test	Increase in temperature ≤ 45 K
Result	Test passed
Short-time withstand current 16 mm ²	1.92 kA
Result	Test passed

Power-frequency withstand voltage

Test voltage setpoint	1.89 kV
Result	Test passed

Mechanical properties

Mechanical data

Open side panel	Yes
-----------------	-----

UIK 16 - Installation terminal block



3006153

<https://www.phoenixcontact.com/in/products/3006153>

Mechanical tests

Mechanical strength

Result	Test passed
--------	-------------

Attachment on the carrier

DIN rail/fixing support	NS 32/NS 35
Result	Test passed

Test for conductor damage and slackening

Rotation speed	10 (+/- 2) rpm
Revolutions	135
Conductor cross section/weight	2.5 mm ² / 0.7 kg
	16 mm ² / 2.9 kg
	25 mm ² / 4.5 kg
Result	Test passed

Environmental and real-life conditions

Needle-flame test

Time of exposure	30 s
Result	Test passed

Ambient conditions

Ambient temperature (operation)	-60 °C ... 105 °C (max. short-term operating temperature RTI Elec.)
Ambient temperature (storage/transport)	-25 °C ... 60 °C (for a short time, not exceeding 24 h, -60 °C to +70 °C)
Ambient temperature (assembly)	-5 °C ... 70 °C
Permissible humidity (storage/transport)	30 % ... 70 %

Standards and regulations

Connection in acc. with standard	IEC 60947-7-1
----------------------------------	---------------

Mounting

Mounting type	NS 35/7,5
	NS 35/15
	NS 32

UIK 16 - Installation terminal block



3006153

<https://www.phoenixcontact.com/in/products/3006153>

Drawings

Circuit diagram

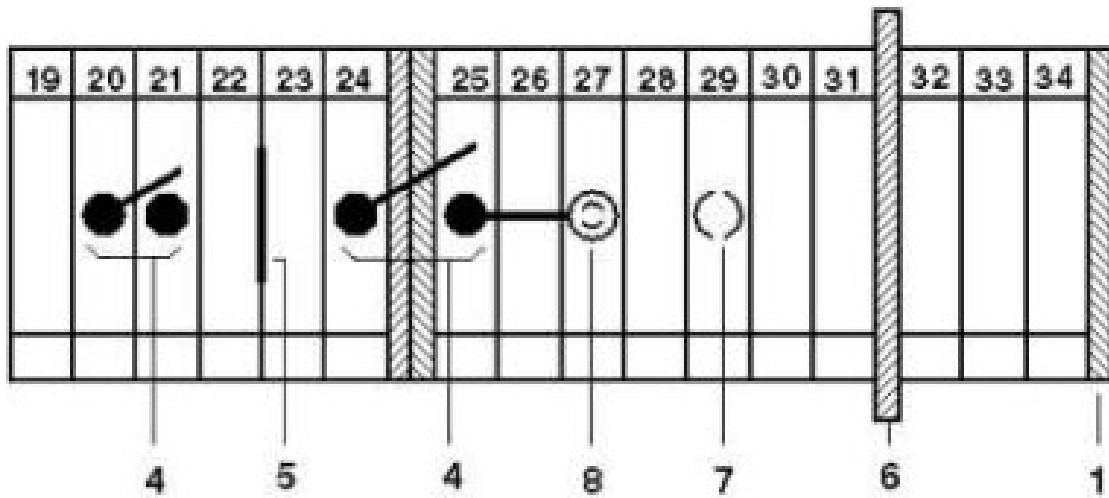
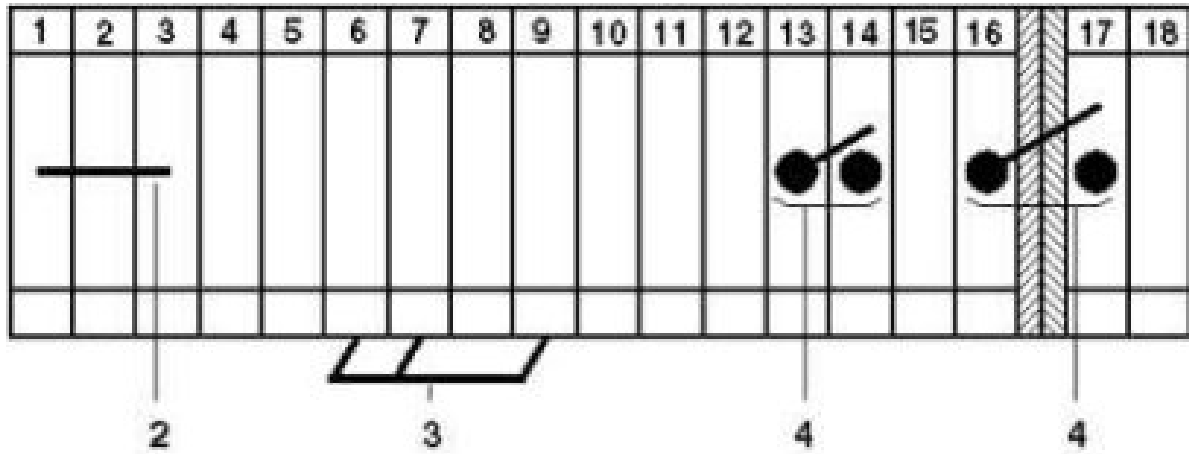


UIK 16 - Installation terminal block

3006153

<https://www.phoenixcontact.com/in/products/3006153>

Circuit diagram




UIK 16 - Installation terminal block





3006153

<https://www.phoenixcontact.com/in/products/3006153>

Approvals

 CSA Approval ID: 158887				
	Nominal Voltage U_N	Nominal Current I_N	Cross Section AWG	Cross Section mm^2
	300 V	85 A	12 - 4	-
	300 V	85 A	12 - 4	-
	600 V	5 A	12 - 4	-

 EAC Approval ID: RU C-DE.BL08.B.00534				
---	--	--	--	--

 cULus Recognized Approval ID: E60425				
	Nominal Voltage U_N	Nominal Current I_N	Cross Section AWG	Cross Section mm^2
	300 V	85 A	12 - 4	-
	300 V	85 A	12 - 4	-
	400 V	85 A	12 - 4	-
	600 V	5 A	12 - 4	-

UIK 16 - Installation terminal block



3006153

<https://www.phoenixcontact.com/in/products/3006153>

Classifications

ECLASS

ECLASS-11.0	27141125
ECLASS-12.0	27141125
ECLASS-13.0	27250110

ETIM

ETIM 8.0	EC001329
----------	----------

UNSPSC

UNSPSC 21.0	39121400
-------------	----------

UIK 16 - Installation terminal block



3006153

<https://www.phoenixcontact.com/in/products/3006153>

Environmental Product Compliance


China RoHS	Environmentally friendly use period: unlimited = EFUP-e
	No hazardous substances above threshold values

UIK 16 - Installation terminal block

3006153

<https://www.phoenixcontact.com/in/products/3006153>

Accessories

 Note: Applying some accessories below might limit this product.

FBI 2-12 - Fixed bridge

0200075

<https://www.phoenixcontact.com/in/products/0200075>

Fixed bridge, pitch: 12 mm, number of positions: 2, length: 8 mm, color: silver



 Max. current carrying capacity: 101 A

FBI 10-12 - Fixed bridge

0203454

<https://www.phoenixcontact.com/in/products/0203454>

Fixed bridge, pitch: 12 mm, number of positions: 10, length: 8 mm, color: silver



 Max. current carrying capacity: 101 A

UIK 16 - Installation terminal block

3006153

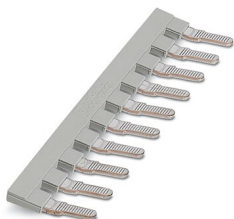
<https://www.phoenixcontact.com/in/products/3006153>



EB 10-12 - Insertion bridge

3006137

<https://www.phoenixcontact.com/in/products/3006137>



Insertion bridge, pitch: 12 mm, number of positions: 10, color: gray

 Max. current carrying capacity: 68 A

SB 2- 8/13 - Switching jumper

0202235

<https://www.phoenixcontact.com/in/products/0202235>



Switching jumper, pitch: 13 mm, number of positions: 2, color: silver

UIK 16 - Installation terminal block

3006153

<https://www.phoenixcontact.com/in/products/3006153>

D-UK 4/10 - End cover

3003020

<https://www.phoenixcontact.com/in/products/3003020>

End cover, length: 42.5 mm, width: 1.8 mm, height: 35.9 mm, color: gray



TS-K - Separating plate

1302215

<https://www.phoenixcontact.com/in/products/1302215>

Separating plate, length: 22 mm, width: 0.5 mm, height: 22 mm, color: gray



UIK 16 - Installation terminal block

3006153

<https://www.phoenixcontact.com/in/products/3006153>

ATP-UK - Partition plate

3003224

<https://www.phoenixcontact.com/in/products/3003224>

Partition plate, length: 56 mm, width: 1.5 mm, height: 45.7 mm, color: gray



WS 4-12 - Warning label

0805328

<https://www.phoenixcontact.com/in/products/0805328>

Warning plate, with 2 plastic screws, across 4 terminal blocks, pitch 12 mm



UIK 16 - Installation terminal block

3006153

<https://www.phoenixcontact.com/in/products/3006153>



WS 5-12 - Warning label

0805315

<https://www.phoenixcontact.com/in/products/0805315>

Warning plate, with 2 plastic screws, across 5 terminal blocks, pitch 12 mm



NLS-CU 3/10 SN 1000MM - Neutral busbar

0402174

<https://www.phoenixcontact.com/in/products/0402174>

Neutral busbar, DIN VDE 0611-4: 1991-02, material: Copper, tin-plated, color: silver



UIK 16 - Installation terminal block

3006153

<https://www.phoenixcontact.com/in/products/3006153>



AP-NLS N - Cover profile

1013634

<https://www.phoenixcontact.com/in/products/1013634>



Cover profile, length: 300 mm, color: transparent

SZS 1,0X4,0 VDE - Screwdriver

1205066

<https://www.phoenixcontact.com/in/products/1205066>



Screwdriver, slot-headed, VDE insulated, size: 1.0 x 4.0 x 100 mm, 2-component grip, with non-slip grip

UIK 16 - Installation terminal block

3006153

<https://www.phoenixcontact.com/in/products/3006153>



NS 32 PERF 2000MM-VPE 10 - DIN rail perforated

1201002

<https://www.phoenixcontact.com/in/products/1201002>



DIN rail perforated, acc. to EN 60715, material: Steel, galvanized, passivated with a thick layer, G profile, color: silver, Pack of 10 (20 m)

NS 32 UNPERF 2000MM-VPE 10 - DIN rail, unperforated

1201015

<https://www.phoenixcontact.com/in/products/1201015>



DIN rail, unperforated, acc. to EN 60715, material: Steel, galvanized, passivated with a thick layer, G profile, color: silver, Pack of 10 (20 m)

UIK 16 - Installation terminal block

3006153

<https://www.phoenixcontact.com/in/products/3006153>



NS 35/ 7,5 PERF 2000MM - DIN rail perforated

0801733

<https://www.phoenixcontact.com/in/products/0801733>



DIN rail perforated, acc. to EN 60715, material: Steel, galvanized, passivated with a thick layer, Standard profile, color: silver, Pack of 25 (50 m)

NS 35/ 7,5 UNPERF 2000MM - DIN rail, unperforated

0801681

<https://www.phoenixcontact.com/in/products/0801681>



DIN rail, unperforated, acc. to EN 60715, material: Steel, galvanized, passivated with a thick layer, Standard profile, color: silver, Pack of 25 (50 m)

UIK 16 - Installation terminal block

3006153

<https://www.phoenixcontact.com/in/products/3006153>



NS 35/ 7,5 WH PERF 2000MM - DIN rail perforated

1204119

<https://www.phoenixcontact.com/in/products/1204119>



DIN rail perforated, acc. to EN 60715, material: Steel, Galvanized, white passivated, Standard profile, color: silver, Pack of 25 (50 m)

NS 35/ 7,5 WH UNPERF 2000MM-VPE 10 - DIN rail, unperforated

1204122

<https://www.phoenixcontact.com/in/products/1204122>



DIN rail, unperforated, acc. to EN 60715, material: Steel, Galvanized, white passivated, Standard profile, color: silver, Pack of 10 (20 m)

UIK 16 - Installation terminal block

3006153

<https://www.phoenixcontact.com/in/products/3006153>



NS 35/ 7,5 AL UNPERF 2000MM - DIN rail, unperforated

0801704

<https://www.phoenixcontact.com/in/products/0801704>



DIN rail, unperforated, acc. to EN 60715, material: Aluminum, uncoated, Standard profile, color: silver, Pack of 25 (50 m)

NS 35/ 7,5 ZN PERF 2000MM - DIN rail perforated

1206421

<https://www.phoenixcontact.com/in/products/1206421>



DIN rail perforated, acc. to EN 60715, material: Steel, galvanized, Standard profile, color: silver, Pack of 25 (50 m)

UIK 16 - Installation terminal block

3006153

<https://www.phoenixcontact.com/in/products/3006153>



NS 35/ 7,5 ZN UNPERF 2000MM - DIN rail, unperforated

1206434

<https://www.phoenixcontact.com/in/products/1206434>



DIN rail, unperforated, acc. to EN 60715, material: Steel, galvanized, Standard profile, color: silver, Pack of 25 (50 m)

NS 35/ 7,5 CU UNPERF 2000MM-VPE 10 - DIN rail, unperforated

0801762

<https://www.phoenixcontact.com/in/products/0801762>



DIN rail, unperforated, acc. to EN 60715, material: Copper, uncoated, Standard profile, color: copper-colored, Pack of 10 (20 m)

UIK 16 - Installation terminal block

3006153

<https://www.phoenixcontact.com/in/products/3006153>



NS 35/ 7,5 CAP - End cap

1206560

<https://www.phoenixcontact.com/in/products/1206560>

DIN rail end piece, for DIN rail NS 35/7.5



NS 35/15 PERF 2000MM - DIN rail perforated

1201730

<https://www.phoenixcontact.com/in/products/1201730>



DIN rail perforated, similar to EN 60715, material: Steel, galvanized, passivated with a thick layer, Standard profile, color: silver, Pack of 25 (50 m)

UIK 16 - Installation terminal block

3006153

<https://www.phoenixcontact.com/in/products/3006153>



NS 35/15 UNPERF 2000MM - DIN rail, unperforated

1201714

<https://www.phoenixcontact.com/in/products/1201714>



DIN rail, unperforated, similar to EN 60715, material: Steel, galvanized, passivated with a thick layer, Standard profile, color: silver, Pack of 25 (50 m)

NS 35/15 WH PERF 2000MM - DIN rail perforated

0806602

<https://www.phoenixcontact.com/in/products/0806602>



DIN rail perforated, similar to EN 60715, material: Steel, Galvanized, white passivated, Standard profile, color: white, Pack of 25 (50 m)

UIK 16 - Installation terminal block

3006153

<https://www.phoenixcontact.com/in/products/3006153>

NS 35/15 WH UNPERF 2000MM-VPE 10 - DIN rail, unperforated

1204135

<https://www.phoenixcontact.com/in/products/1204135>



DIN rail, unperforated, similar to EN 60715, material: Steel, Galvanized, white passivated, Standard profile, color: silver, Pack of 10 (20 m)

NS 35/15 AL UNPERF 2000MM - DIN rail, unperforated

1201756

<https://www.phoenixcontact.com/in/products/1201756>



DIN rail, unperforated, similar to EN 60715, material: Aluminum, uncoated, Standard profile, color: silver

UIK 16 - Installation terminal block

3006153

<https://www.phoenixcontact.com/in/products/3006153>



NS 35/15 ZN PERF 2000MM - DIN rail perforated

1206599

<https://www.phoenixcontact.com/in/products/1206599>



DIN rail perforated, similar to EN 60715, material: Steel, galvanized, Standard profile, color: silver, Pack of 25 (50 m)

NS 35/15 ZN UNPERF 2000MM - DIN rail, unperforated

1206586

<https://www.phoenixcontact.com/in/products/1206586>



DIN rail, unperforated, similar to EN 60715, material: Steel, galvanized, Standard profile, color: silver, Pack of 25 (50 m)

UIK 16 - Installation terminal block

3006153

<https://www.phoenixcontact.com/in/products/3006153>

NS 35/15 CU UNPERF 2000MM-VPE 10 - DIN rail, unperforated

1201895

<https://www.phoenixcontact.com/in/products/1201895>



DIN rail, unperforated, similar to EN 60715, material: Copper, uncoated, Standard profile, color: copper-colored, Pack of 10 (20 m)

NS 35/15 CAP - End cap

1206573

<https://www.phoenixcontact.com/in/products/1206573>

DIN rail end piece, for DIN rail NS 35/15



UIK 16 - Installation terminal block

3006153

<https://www.phoenixcontact.com/in/products/3006153>

NS 35/15-2,3 UNPERF 2000MM-VPE 10 - DIN rail, unperforated

1201798

<https://www.phoenixcontact.com/in/products/1201798>

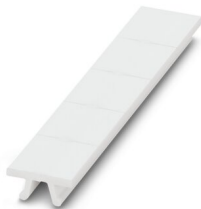


DIN rail, unperforated, acc. to EN 60715, material: Steel, galvanized, passivated with a thick layer, Standard profile 2.3 mm, color: silver, Pack of 10 (20 m)

ZB 12:UNPRINTED - Zack marker strip

0812120

<https://www.phoenixcontact.com/in/products/0812120>



Zack marker strip, Strip, white, unlabeled, can be labeled with: PLOTMARK, CMS-P1-PLOTTER, mounting type: snapped, for terminal block width: 12.2 mm, lettering field size: 12 x 10.5 mm, Number of individual labels: 5

UIK 16 - Installation terminal block

3006153

<https://www.phoenixcontact.com/in/products/3006153>



ZB 12 CUS - Zack marker strip

0824942

<https://www.phoenixcontact.com/in/products/0824942>



Zack marker strip, can be ordered: Strip, white, labeled according to customer specifications, mounting type: snap into tall marker groove, for terminal block width: 12.2 mm, lettering field size: 10.5 x 12.15 mm, Number of individual labels: 5

ZB 12,LGS:L1-N,PE - Zack marker strip

0812146

<https://www.phoenixcontact.com/in/products/0812146>



Zack marker strip, Strip, white, labeled, printed horizontally: L1, L2, L3, N, PE, mounting type: snapped, for terminal block width: 12.2 mm, lettering field size: 10.5 x 12.15 mm, Number of individual labels: 5

UIK 16 - Installation terminal block

3006153

<https://www.phoenixcontact.com/in/products/3006153>



UC-TM 12 - Marker for terminal blocks

0819194

<https://www.phoenixcontact.com/in/products/0819194>



Marker for terminal blocks, Sheet, white, unlabeled, can be labeled with: BLUEMARK ID COLOR, BLUEMARK ID, BLUEMARK CLED, PLOTMARK, CMS-P1-PLOTTER, mounting type: snapped, for terminal block width: 12 mm, lettering field size: 11.45 x 10.5 mm, Number of individual labels: 40

UC-TM 12 CUS - Marker for terminal blocks

0824613

<https://www.phoenixcontact.com/in/products/0824613>



Marker for terminal blocks, can be ordered: by sheet, white, labeled according to customer specifications, mounting type: snap into tall marker groove, for terminal block width: 12 mm, lettering field size: 11.45 x 10.5 mm, Number of individual labels: 40

UIK 16 - Installation terminal block

3006153

<https://www.phoenixcontact.com/in/products/3006153>

UCT-TM 12 - Marker for terminal blocks

0829144

<https://www.phoenixcontact.com/in/products/0829144>



Marker for terminal blocks, Sheet, white, unlabeled, can be labeled with: TOPMARK NEO, TOPMARK LASER, BLUEMARK ID COLOR, BLUEMARK ID, BLUEMARK CLED, THERMOMARK PRIME, THERMOMARK CARD 2.0, THERMOMARK CARD, mounting type: snapped, for terminal block width: 12 mm, lettering field size: 10.8 x 9.6 mm, Number of individual labels: 30

UCT-TM 12 CUS - Marker for terminal blocks

0829630

<https://www.phoenixcontact.com/in/products/0829630>



Marker for terminal blocks, can be ordered: by sheet, white, labeled according to customer specifications, mounting type: snap into tall marker groove, for terminal block width: 12 mm, lettering field size: 10.8 x 9.6 mm, Number of individual labels: 30

UIK 16 - Installation terminal block

3006153

<https://www.phoenixcontact.com/in/products/3006153>



PS-MT - Test plugs

0311647

<https://www.phoenixcontact.com/in/products/0311647>



Test plugs, number of positions: 1, fuse type: , mounting type: , , color: silver

PS-IH WH - Insulating sleeve

0311566

<https://www.phoenixcontact.com/in/products/0311566>



Insulating sleeve, number of positions: 1, fuse type: , mounting type: , , color: white

UIK 16 - Installation terminal block

3006153

<https://www.phoenixcontact.com/in/products/3006153>

PS-IH RD - Insulating sleeve

0311579

<https://www.phoenixcontact.com/in/products/0311579>



Insulating sleeve, number of positions: 1, fuse type: , mounting type: , , color: red

PS-IH BU - Insulating sleeve

0311582

<https://www.phoenixcontact.com/in/products/0311582>



Insulating sleeve, number of positions: 1, fuse type: , mounting type: , , color: blue

UIK 16 - Installation terminal block

3006153

<https://www.phoenixcontact.com/in/products/3006153>

PS-IH YE - Insulating sleeve

0311595

<https://www.phoenixcontact.com/in/products/0311595>



Insulating sleeve, number of positions: 1, fuse type: , mounting type: , , color: yellow

PS-IH GN - Insulating sleeve

0311605

<https://www.phoenixcontact.com/in/products/0311605>



Insulating sleeve, number of positions: 1, fuse type: , mounting type: , , color: green

UIK 16 - Installation terminal block

3006153

<https://www.phoenixcontact.com/in/products/3006153>

PS-IH GY - Insulating sleeve

0311621

<https://www.phoenixcontact.com/in/products/0311621>



Insulating sleeve, number of positions: 1, fuse type: , mounting type: , , color: gray

PS-IH BK - Insulating sleeve

0311634

<https://www.phoenixcontact.com/in/products/0311634>



Insulating sleeve, number of positions: 1, fuse type: , mounting type: , , color: black

UIK 16 - Installation terminal block

3006153

<https://www.phoenixcontact.com/in/products/3006153>



PS-IH VT - Insulating sleeve

0311618

<https://www.phoenixcontact.com/in/products/0311618>



Insulating sleeve, number of positions: 1, fuse type: , mounting type: , , color: violet

CLIPFIX 35 - End clamp

3022218

<https://www.phoenixcontact.com/in/products/3022218>



Quick mounting end clamp for NS 35/7,5 DIN rail or NS 35/15 DIN rail, with marking option, width: 9.5 mm, color: gray

UIK 16 - Installation terminal block

3006153

<https://www.phoenixcontact.com/in/products/3006153>



CLIPFIX 35-5 - End clamp

3022276

<https://www.phoenixcontact.com/in/products/3022276>

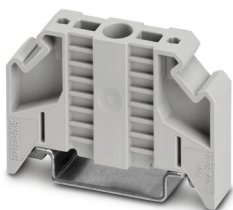


Quick mounting end clamp for NS 35/7,5 DIN rail or NS 35/15 DIN rail, with marking option, with parking option for FBS...5, FBS...6, KSS 5, KSS 6, width: 5.15 mm, color: gray

E/NS 35 N - End clamp

0800886

<https://www.phoenixcontact.com/in/products/0800886>



End clamp, width: 9.5 mm, color: gray

UIK 16 - Installation terminal block

3006153

<https://www.phoenixcontact.com/in/products/3006153>

E/UK - End clamp

1201442

<https://www.phoenixcontact.com/in/products/1201442>

End clamp, material: PA, color: gray, Mounting on a DIN rail NS 32 or NS 35



E/UK 1 - End clamp

1201413

<https://www.phoenixcontact.com/in/products/1201413>

End clamps, for supporting the ends of double-level and three-level terminal blocks, width: 10 mm, color: gray



UIK 16 - Installation terminal block

3006153

<https://www.phoenixcontact.com/in/products/3006153>



PSBJ 4/15/6 FARBLOS - Female test connector

0303419

<https://www.phoenixcontact.com/in/products/0303419>



Female test connector, number of positions: 1, fuse type: , mounting type: , , , color: transparent

PSBJ 4/15/6 WH - Female test connector

0303312

<https://www.phoenixcontact.com/in/products/0303312>



Female test connector, number of positions: 1, fuse type: , mounting type: , , , color: white

UIK 16 - Installation terminal block

3006153

<https://www.phoenixcontact.com/in/products/3006153>

PSBJ 4/15/6 RD - Female test connector

0303325

<https://www.phoenixcontact.com/in/products/0303325>



Female test connector, number of positions: 1, fuse type: , mounting type: , , ,
color: red

PSBJ 4/15/6 BU - Female test connector

0303354

<https://www.phoenixcontact.com/in/products/0303354>



Female test connector, number of positions: 1, fuse type: , mounting type: , , ,
color: blue

UIK 16 - Installation terminal block

3006153

<https://www.phoenixcontact.com/in/products/3006153>

PSBJ 4/15/6 YE - Female test connector

0303367

<https://www.phoenixcontact.com/in/products/0303367>



Female test connector, number of positions: 1, fuse type: , mounting type: , , ,
color: yellow

PSBJ 4/15/6 GN - Female test connector

0303370

<https://www.phoenixcontact.com/in/products/0303370>



Female test connector, number of positions: 1, fuse type: , mounting type: , , ,
color: green

UIK 16 - Installation terminal block

3006153

<https://www.phoenixcontact.com/in/products/3006153>

PSBJ 4/15/6 VT - Female test connector

0303383

<https://www.phoenixcontact.com/in/products/0303383>



Female test connector, number of positions: 1, fuse type: , mounting type: , , ,
color: violet

PSBJ 4/15/6 GY - Female test connector

0303396

<https://www.phoenixcontact.com/in/products/0303396>



Female test connector, number of positions: 1, fuse type: , mounting type: , , ,
color: gray

UIK 16 - Installation terminal block

3006153

<https://www.phoenixcontact.com/in/products/3006153>



PSBJ 4/15/6 BK - Female test connector

0303406

<https://www.phoenixcontact.com/in/products/0303406>



Female test connector, number of positions: 1, fuse type: , mounting type: , , ,
color: black

PSB 4/7/6 - Female test connector

0303299

<https://www.phoenixcontact.com/in/products/0303299>



Female test connector, number of positions: 1, fuse type: , mounting type: , , ,
color: silver

Phoenix Contact 2023 © - all rights reserved
<https://www.phoenixcontact.com>

PHOENIX CONTACT (I) Pvt. Ltd.
A-58/2, Okhla Industrial Area, Phase - II, New Delhi-110 020

+91.1275.71420
info@phoenixcontact.co.in